

Arden Station



Arden Station – artwork *Come Together* by Abdul Abdullah

The Metro Tunnel will run the busy Cranbourne, Pakenham and Sunbury lines through a new tunnel under Melbourne's CBD, with bigger and more modern trains and next generation signalling for turn up and go services. The Metro Tunnel will open in late 2025.

Arden Station will be at the centre of a new employment and innovation precinct that will be home to thousands of jobs and new homes.

The station, near the corner of Arden and Laurens streets in North Melbourne, will be a sustainable transport hub just a few minutes' walk from the North Melbourne Recreation Centre, Arden Street Oval and the Route 57 tram.

The streets around Arden Station are designed for walkability and pedestrian safety, with wide footpaths and a signalised crossing on Laurens Street to the station entrance.

Outside the station there are more than 120 bike parking spaces, along with separated bike lanes to make cycling safer and easier.

Arden Station will provide a new connection to buses on Laurens Street and the Route 57 tram to North Melbourne and Maribyrnong.

The station facade features a major artwork by Australian artist Abdul Abdullah, *Come Together*. The work celebrates the communities of Arden, connecting the past of Melbourne's west to its future.



Sign up for updates
metrotunnel.vic.gov.au/subscribe

VICTORIA'S BIG BUILD



Arden Station concept image – station concourse

Station design

Arden Station is the first building in a new urban area, setting a quality benchmark for all future development around it.

Arden Station's entrance features massive brick arches, reflecting North Melbourne's rich industrial history and character.

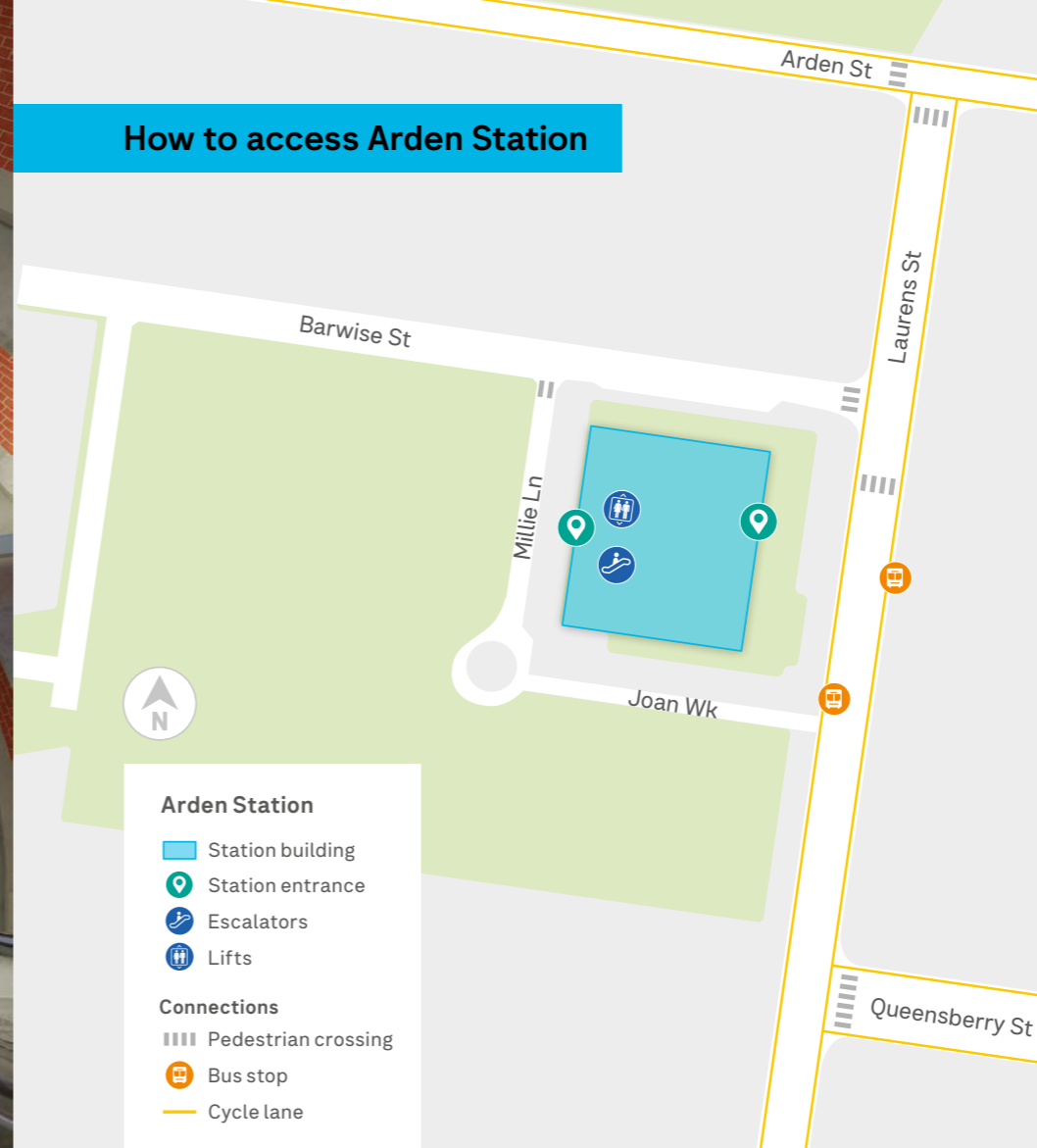
The arches are made from precast concrete lined with more than 100,000 Victorian-made bricks—each one laid by hand.

Three 16m-long skylights will provide natural light for the granite-paved concourse and platforms below.

Arden Station will have Victorian-first platform screen doors for better safety, climate control and less noise.



Arden Station concept image – skylight draws natural light to platform level



Accessibility

The Metro Tunnel's new stations will be accessible.

The new trains that will run through the Metro Tunnel have improved Passenger Information Displays, audible announcements and hearing loops, level access to the platform and accessible seats.

The five new underground stations in the Metro Tunnel will include:

- escalators and lifts
- customer service counters and Customer Help Points
- generous platform widths
- Tactile Ground Surface Indicators
- braille and tactile signs
- audible announcements and hearing loops
- improved Passenger Information Displays
- accessible toilets, ambulant cubicles, parents' rooms and adult change rooms
- dedicated evacuation strategy for people with restricted mobility.

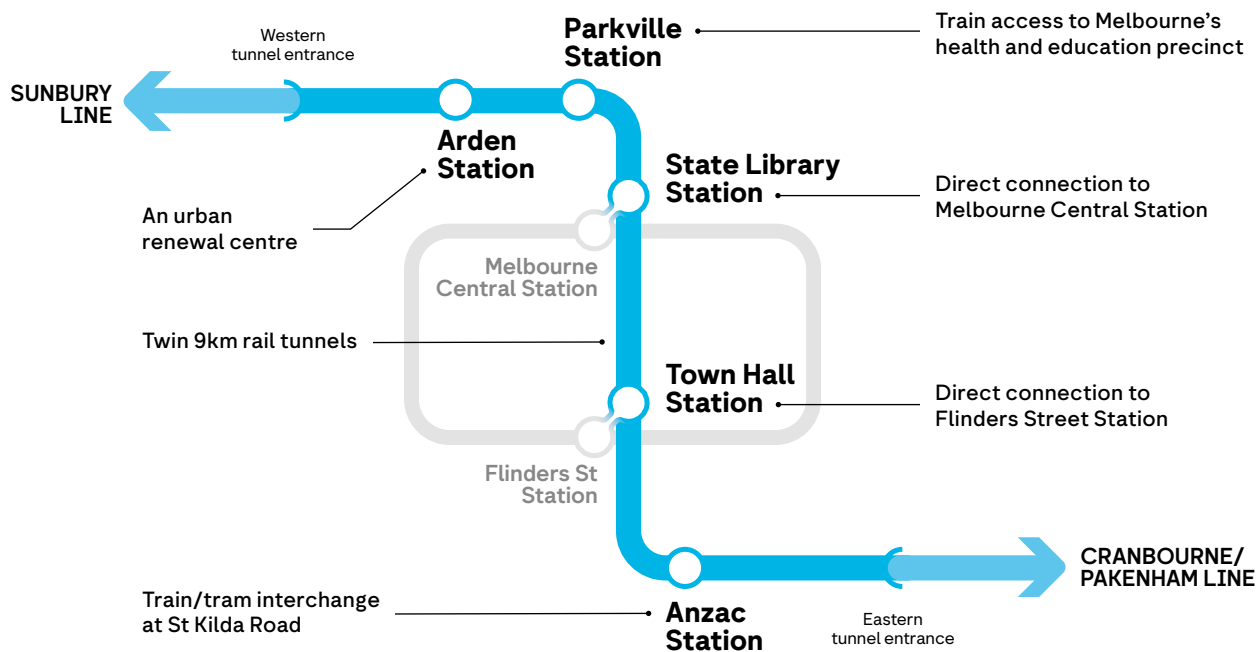
Arden Station's main entrance on Laurens Street will be accessible via lifts and ramps.

Universal access parking bays will be located right outside the Arden Station entrance.



Arden Station concept image – platform level

Metro Tunnel route



More choice, better connections



Better connections to jobs, education and health services



Bigger, more comfortable trains with better accessibility



Connecting Parkville and St Kilda Road to the rail network for the first time



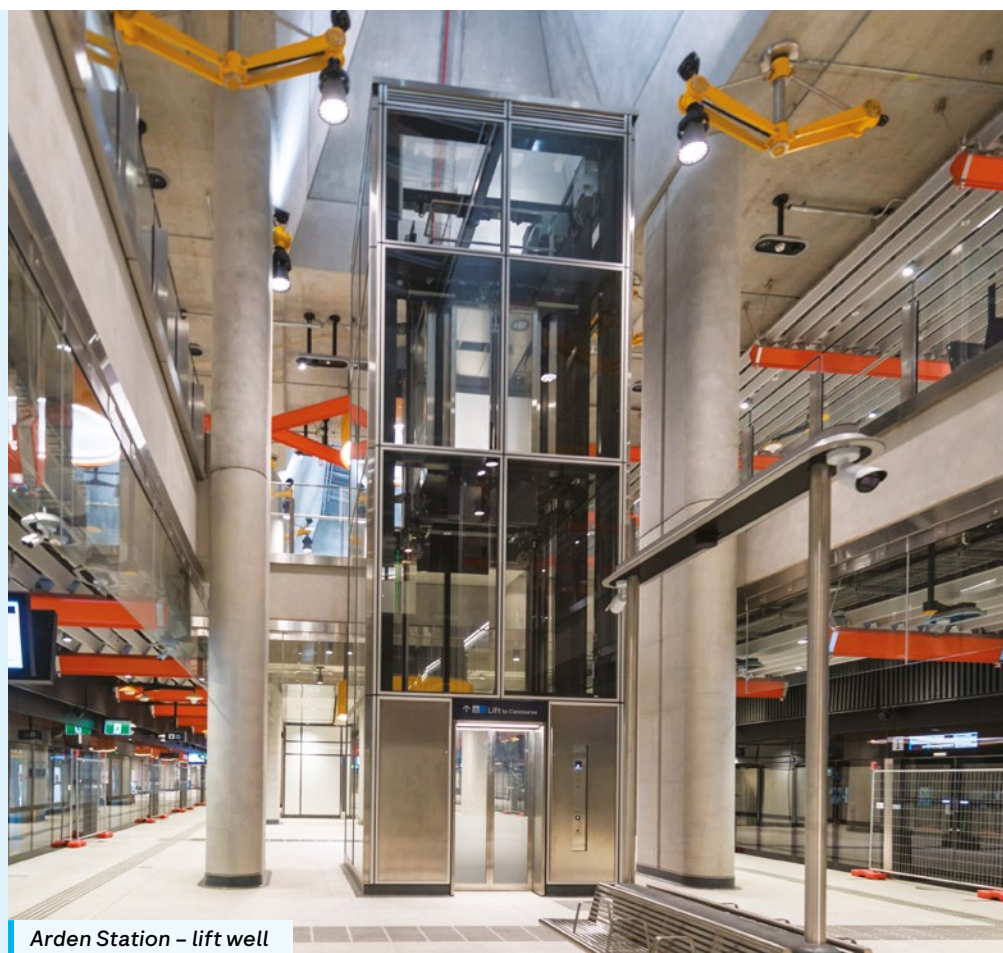
Expanding Melbourne's rail network for the city's growing population



Five new state-of-the-art underground stations



Next-generation High Capacity Signalling for turn up and go services



Arden Station - lift well

Find out more

metrotunnel.vic.gov.au

1800 105 105 (call anytime)



For languages other than English please call (03) 9209 0147



Please contact us if you would like this information in an accessible format. If you need assistance due to a hearing or speech impairment, visit relayservice.gov.au

