



## STATE LIBRARY AND TOWN HALL COMMUNITY REFERENCE GROUP

**Kate Walshe**, Communications and Stakeholder Engagement Director, CYP D&C  
**Melinda Kelly**, State Library Station Stakeholder Engagement Manager, CYP D&C  
**Blythe Chidgey**, Town Hall Station Stakeholder Engagement Manager, CYP D&C  
**Sarah Robins**, Metro Tunnel Creative Program Manager, CYP Project CO

24 June 2024



1. Actions from previous meeting
2. Project wide update
3. State Library Station update
4. La Trobe Street tram stop upgrade project
5. Town Hall Station update
6. Update on City of Melbourne's Little Streets (shared zone) program
7. Creative Program update
8. General feedback and items for future discussion

# Actions from previous meeting

- State Library
- Town Hall



# Project Wide Updates

# Project Timelapse Compilation



Video to be played



# State Library Station Update

# State Library Station

La Trobe Street site



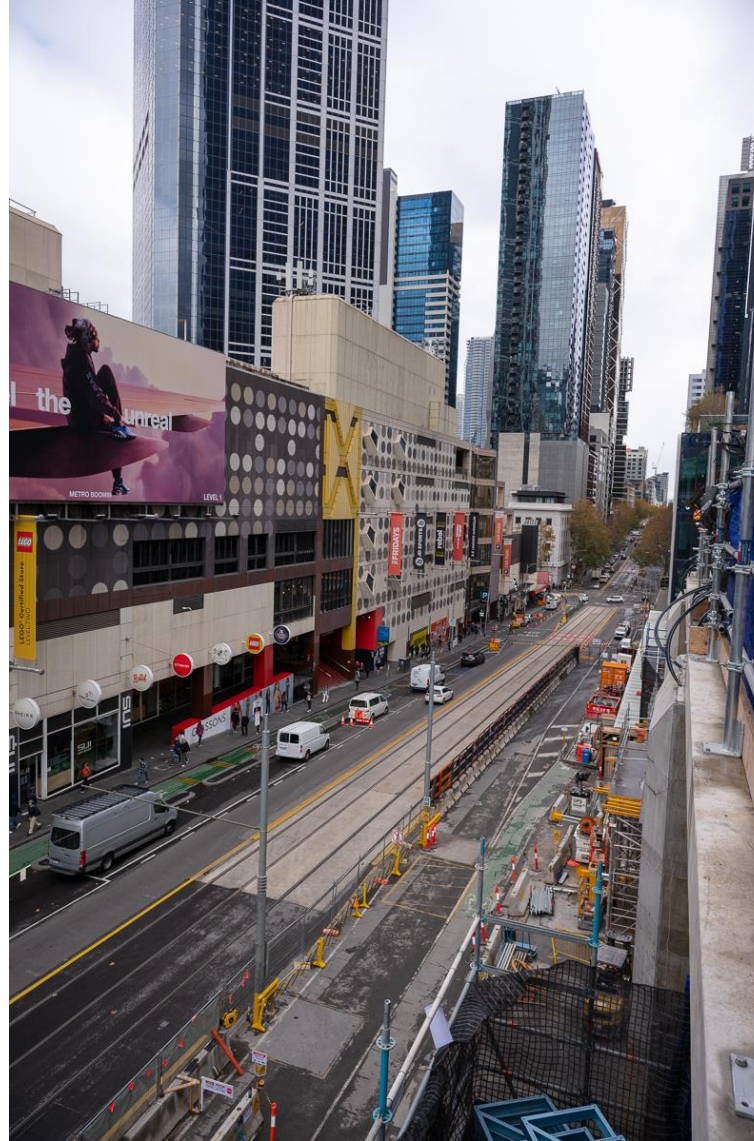
# State Library Station

La Trobe Street site



## Milestones and lookahead

- Construction of the primary structure is now complete
- Formwork installation, concrete pours, slab and wall construction, and mechanical and electrical fit-out is continuing underground
- The La Trobe adit team completed their final arch pour, closing out over three years of lining works throughout the cavern and adits of the station
- Utilities (water, drainage, electricity and comms) installation has commenced within the lane closure at La Trobe Street
- Fit-out and testing of the Melbourne Central escalators is ongoing.





# State Library Station

La Trobe Street site



## Milestones and lookahead

- Kerb extension works have been taking place on the north-east corner of Swanston and La Trobe Street. These works are nearing completion
- Works have commenced to remove the concrete pump and gantry on Swanston Street
- A long-term pedestrian diversion on the western side of Swanston Street will be in place to construct the station foyer and to carry out surface works outside of the station entrance
- Surface works at the station entrance include service installation, bollards and paving.

# State Library Station

Little La Trobe Street site



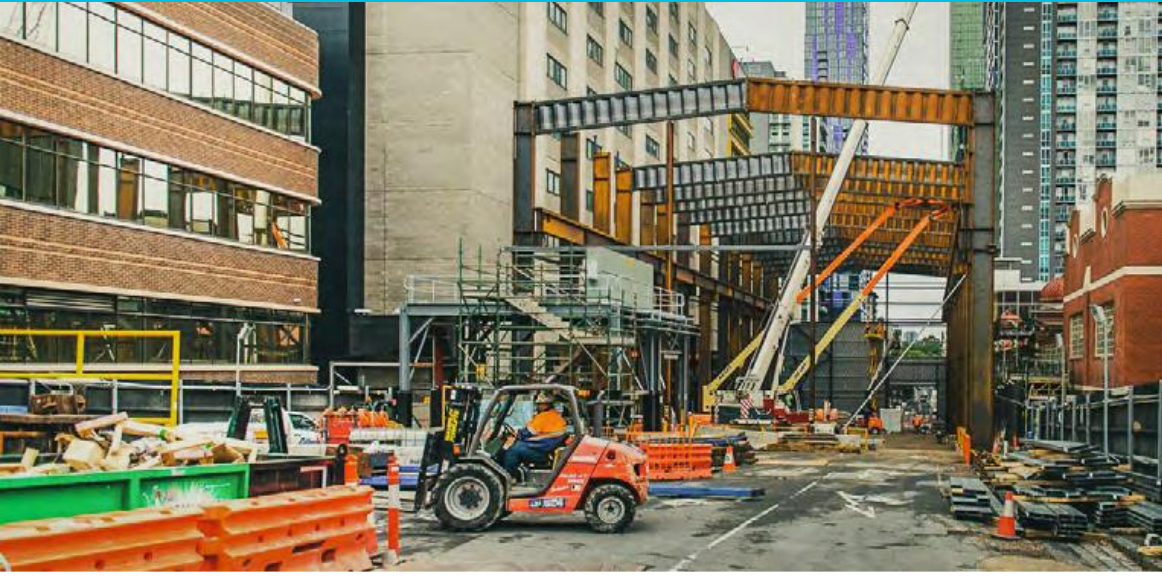
## Milestones and lookahead

- Façade works and steel roof beams at the Little La Trobe Street are continuing within the road closure at Little La Trobe Street
- Scaffolding is being installed on Literature Lane; this will facilitate access to higher levels of the structures required for façade installation
- Fit-out of the western structure is continuing
- Works to extend the site footprint and to provide better access into the La Trobe Street site are taking place under overnight closures of the Little La Trobe Street southern footpath.



# State Library Station

Franklin and A'Beckett Street sites



## Milestones and lookahead

### Franklin Street East Shed Removal

Demobilisation of the Franklin Street East acoustic shed is complete! Here are some stats:

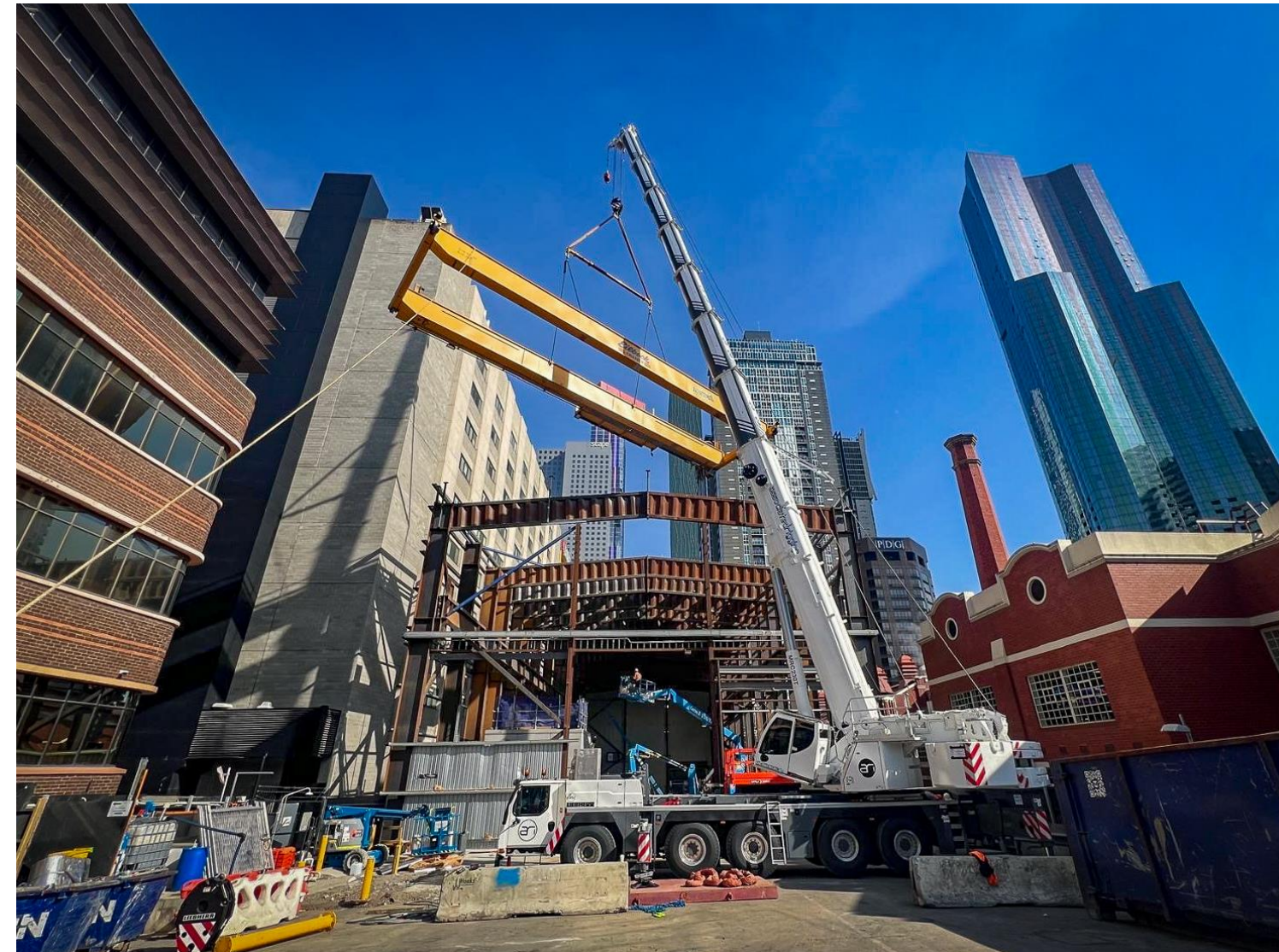
- The acoustic shed dimensions were 73m x 22m
- More than 300T of structural steel removed
- Over 5000m<sup>2</sup> of wall and roof cladding were dismantled
- the ancillary buildings and a new entrance to State Library Station have been unveiled
- Capping beam removal works will commence on the north and east side of the site. Additional footpath closures are required.

# State Library Station

Franklin and A'Beckett Street sites



Franklin Street East  
Shed Removal –  
May 2024 on Vimeo



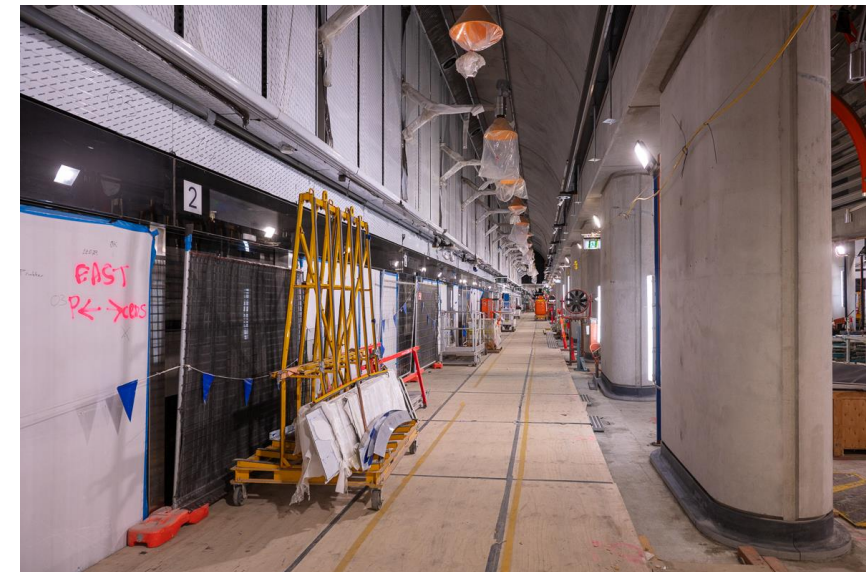
# State Library Station

Franklin and A'Beckett Street sites



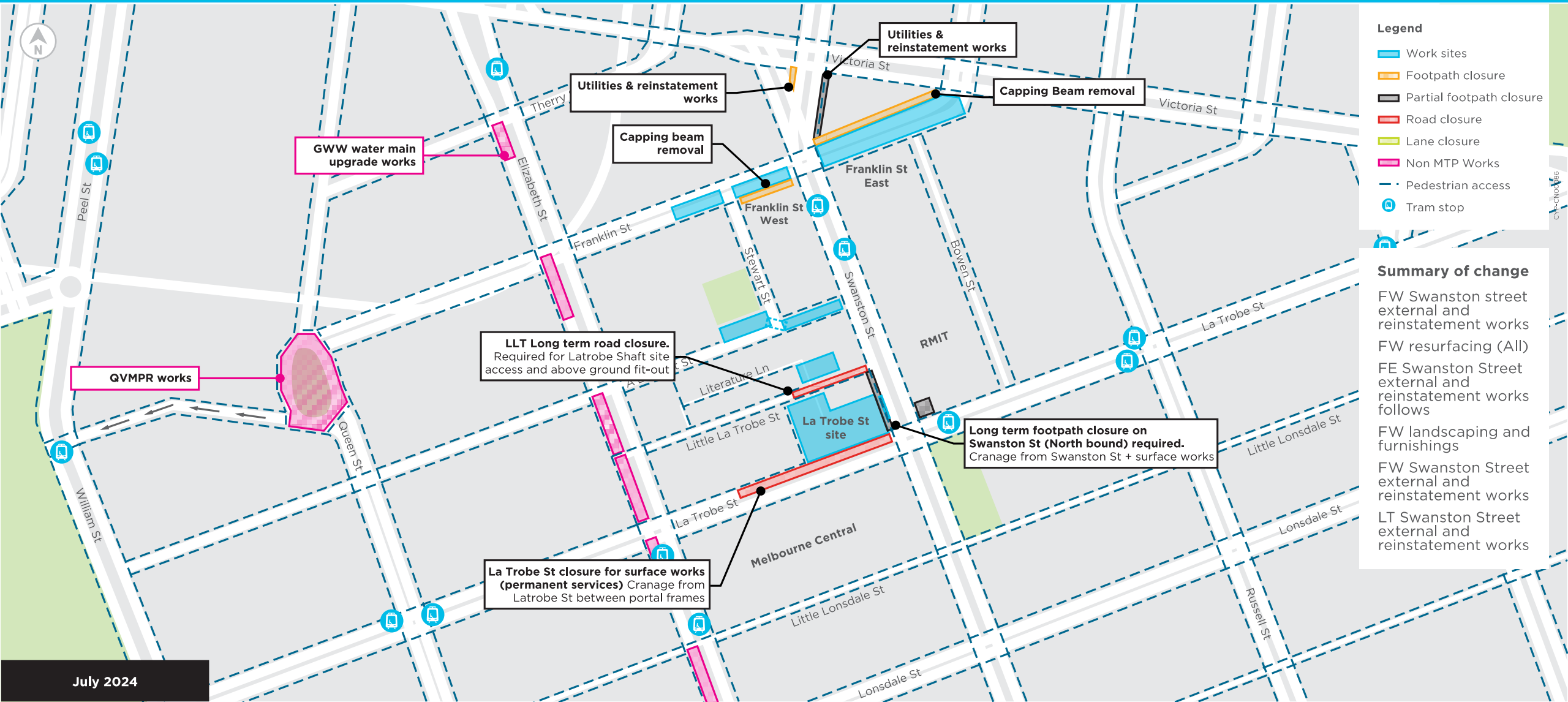
## Milestones and lookahead

- Primary structure works on B2 are continuing at the A'Beckett shaft. Half of the lining walls on the last level beneath the roof slab have been completed
- Once the remaining lining walls are complete, the internal walls on B2 will be constructed. Lower levels are ongoing with blockwork, painting, insulation, electrical and mechanical fit out
- Since removing the acoustic shed, the Franklin West team have been focused on backfilling and structures. They recently commenced a deep excavation, within the site, adjacent to Swanston Street, which will facilitate the removal of a 6.5m section of capping beam
- Additional footpath closures around the will be required for capping beam removal from mid-July.



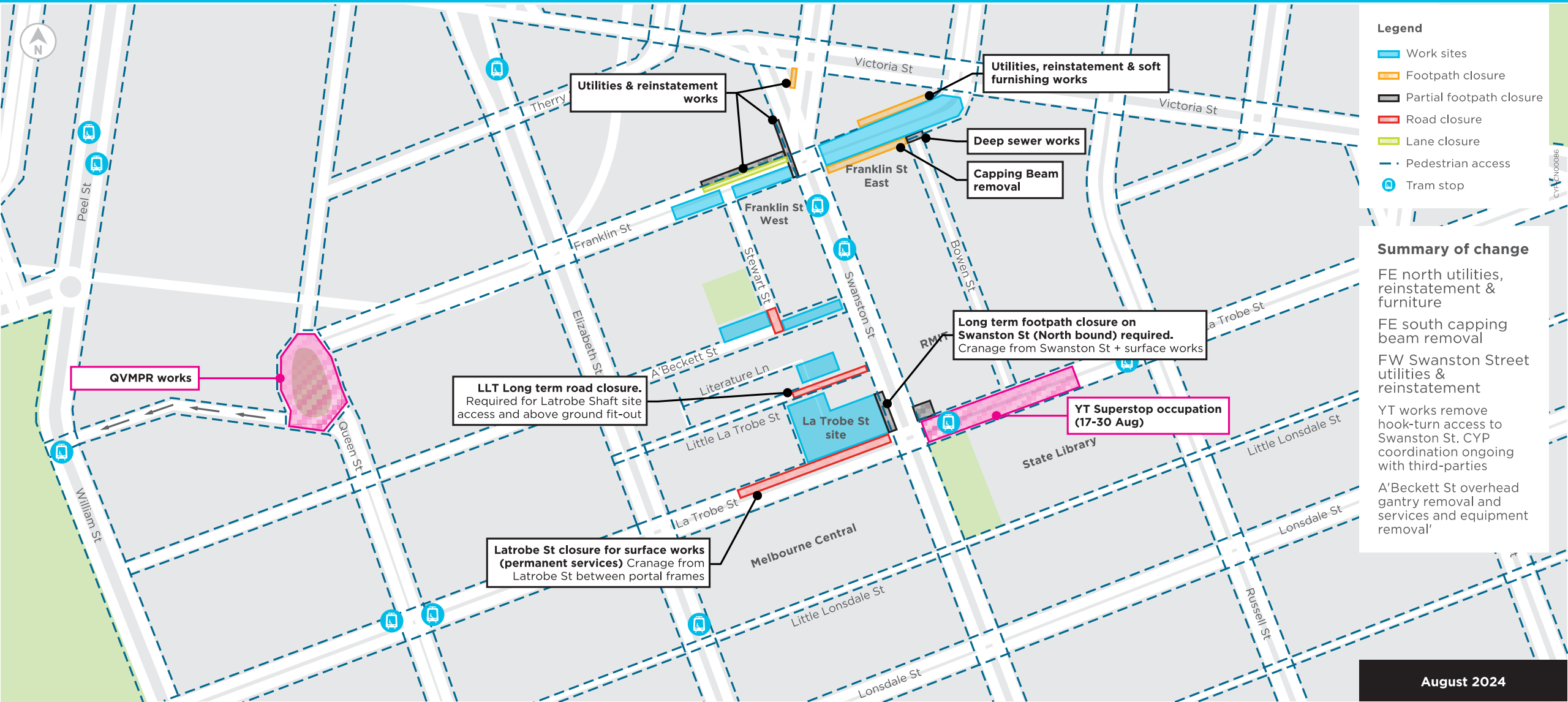
# July 2024

## Proposed Traffic Changes



# August 2024

## Proposed Traffic Changes



- Legend**
- Work sites
  - Footpath closure
  - Partial footpath closure
  - Road closure
  - Lane closure
  - - - Pedestrian access
  - Ⓜ Tram stop

**Summary of change**

- FE north utilities, reinstatement & furniture
- FE south capping beam removal
- FW Swanston Street utilities & reinstatement
- YT works remove hook-turn access to Swanston St. CYP coordination ongoing with third-parties
- A'Beckett St overhead gantry removal and services and equipment removal



# Questions



# La Trobe St Tram Stop Upgrades Project Overview

June 2024



Department  
of Transport  
and Planning



# Current tram stops



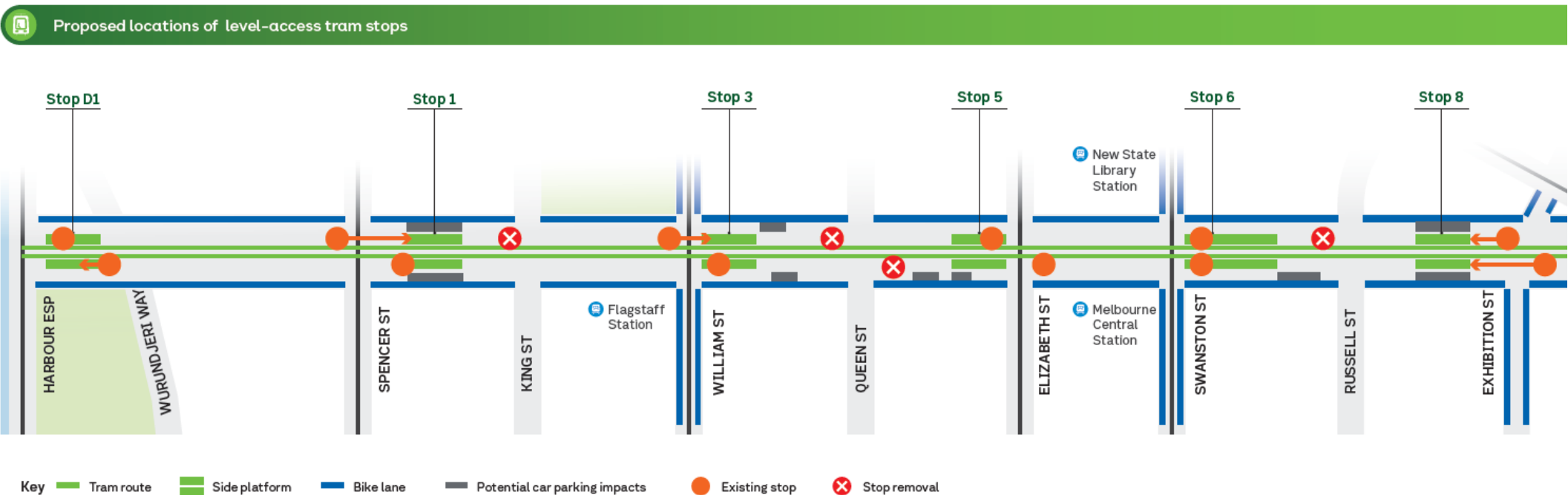
La Trobe & Spencer St Stop



La Trobe & Swanston St Stop

# Project overview

- We're delivering 12 tram platform stops along the La Trobe Street corridor in the CBD to increase accessibility, safety and service reliability.
- Target completion is September this year.
- Department of Transport has engaged Yarra Trams to construct these platforms.



# La Trobe & Swanston St Stop



La Trobe & Swanston St Stop  
*Artist's Impression*

# Project benefits +



La Trobe & William St Stop  
*Artist's Impression*

- **Increased accessibility** including providing ramps for level access, audio information and tactiles
- **Improved safety** for pedestrians and road users
- **Greater capacity** to move passengers in and out and around the CBD
- **Better connectivity** for residents and all passengers to CBD businesses and amenities

# Project benefits +

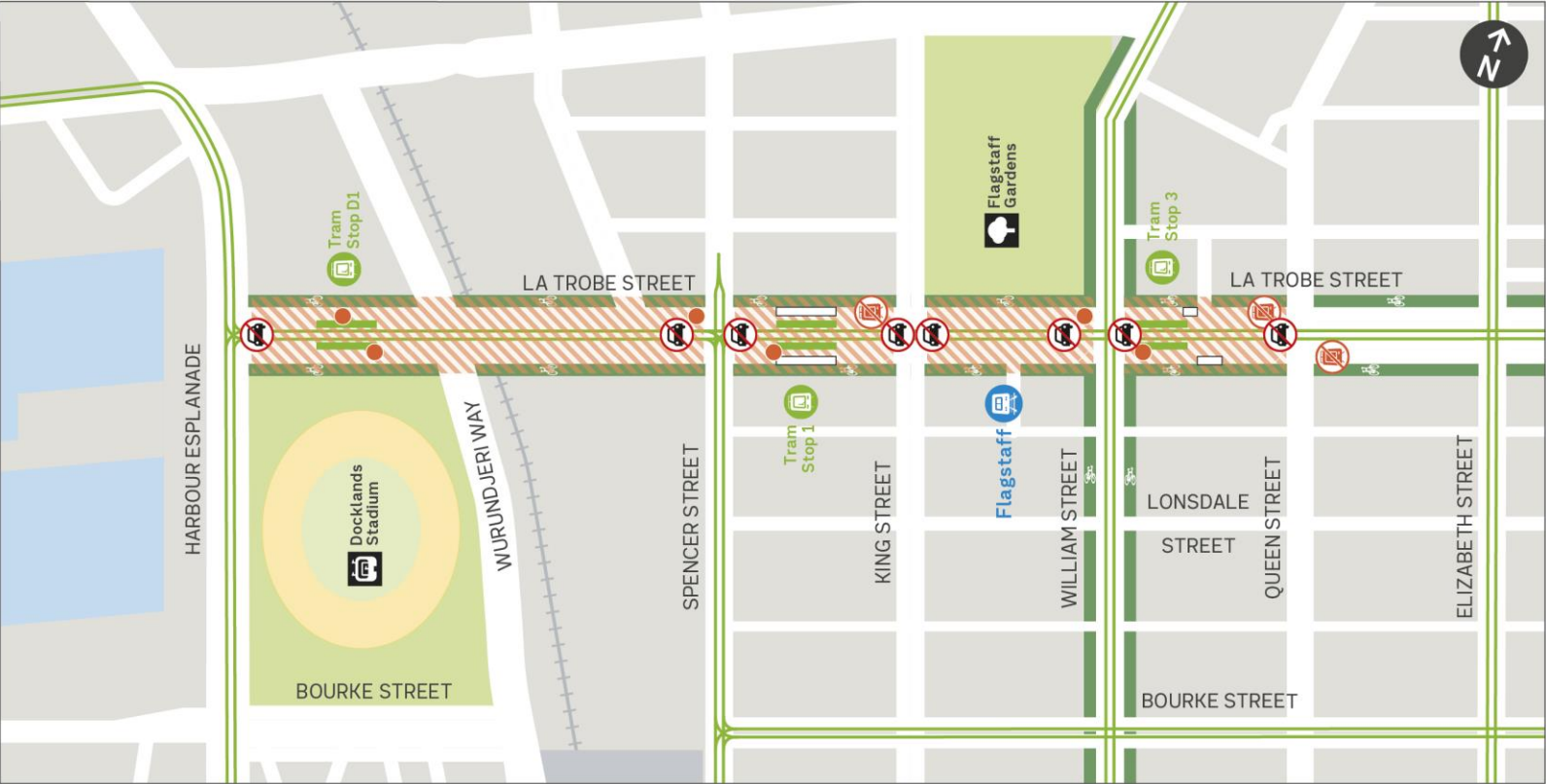
- **Bicycle lane upgrades** physical kerbing to separate cyclists from traffic and more consistent bike lane widths along the corridor
- **Wide pedestrian crossings** for better access to and around new tram stops



La Trobe & Elizabeth St Stop  
*Artist's Impression*

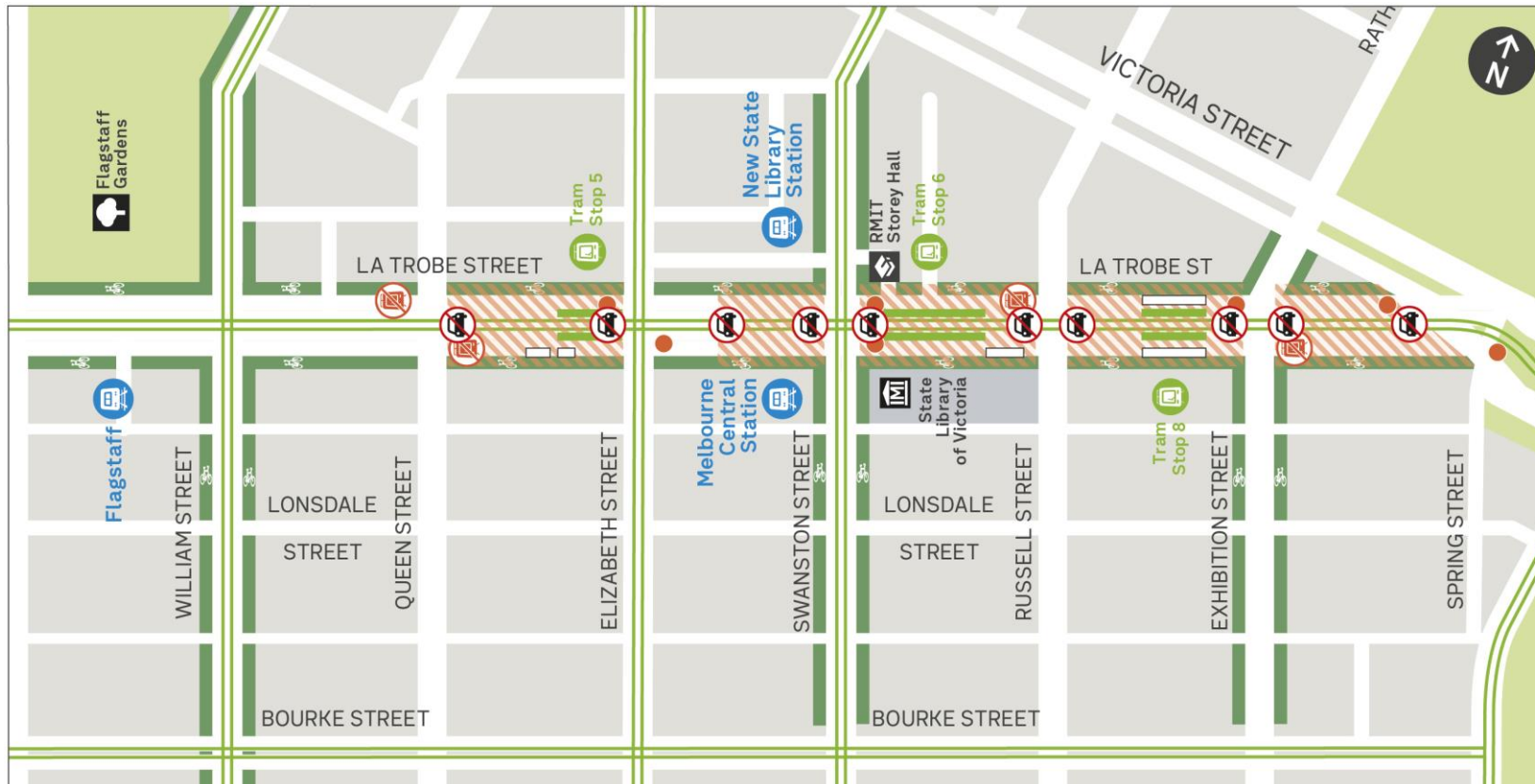
# Stage One

La Trobe Street West, between Harbour Esplanade and Queen Street will occur from 10.30pm, **Friday 12 July** to 4am, **Saturday 27 July 2024** (24-hour works)



# Stage Two

La Trobe Street East, between Queen and Victoria streets will occur from 10.30pm, **Friday 16 August** to 4am, **Friday 30 August 2024** (24-hour works)





# Construction Impacts

## What to expect

- Setting up site and traffic management.
- Excavating sections of the road surface.
- Installing new platform stops.
- Removing old safety zone stops.
- Road closure and kerb to kerb fencing along sections of La Trobe Street.
- Noise and dust are unavoidable, but we will work to minimise this as much as possible and complete the noisiest works between 6am and 10pm.
- Extremely high levels of noise during the first week of the works. For the rest of the works there will be short periods of high level noise.
- Road and line marking.
- Reinstating the site.

# Construction Impacts



## Road and Parking

- Sections of La Trobe Street will be closed.
- Other sections of La Trobe Street will have restricted access.
- Main streets crossing La Trobe Street north south will remain open.
- There will be some permanent car parking changes adjacent to the new platform.
- Traffic management and signage will direct traffic. Please follow signage around works.
- Footpaths will remain open around the works area. There may be temporary footpath closures around the works, with local detours in place.
- **Access for emergency services will be maintained as required.**

# Tram services



There will be service changes to tram routes 30, 35. Route 86 will also be impacted for Stage One only.

Service change information will be on trams, at stops and online.

Visit: [yarratrams.com.au/service-changes](http://yarratrams.com.au/service-changes)

# Find out more or contact us

Webpage:

[yarratrams.com.au/projects/la-trobe-street-tram-stop-upgrades](http://yarratrams.com.au/projects/la-trobe-street-tram-stop-upgrades)

Email:

[projects-comm@yarratrams.com.au](mailto:projects-comm@yarratrams.com.au)



# Town Hall Station Update

# Town Hall Station Work Lookahead

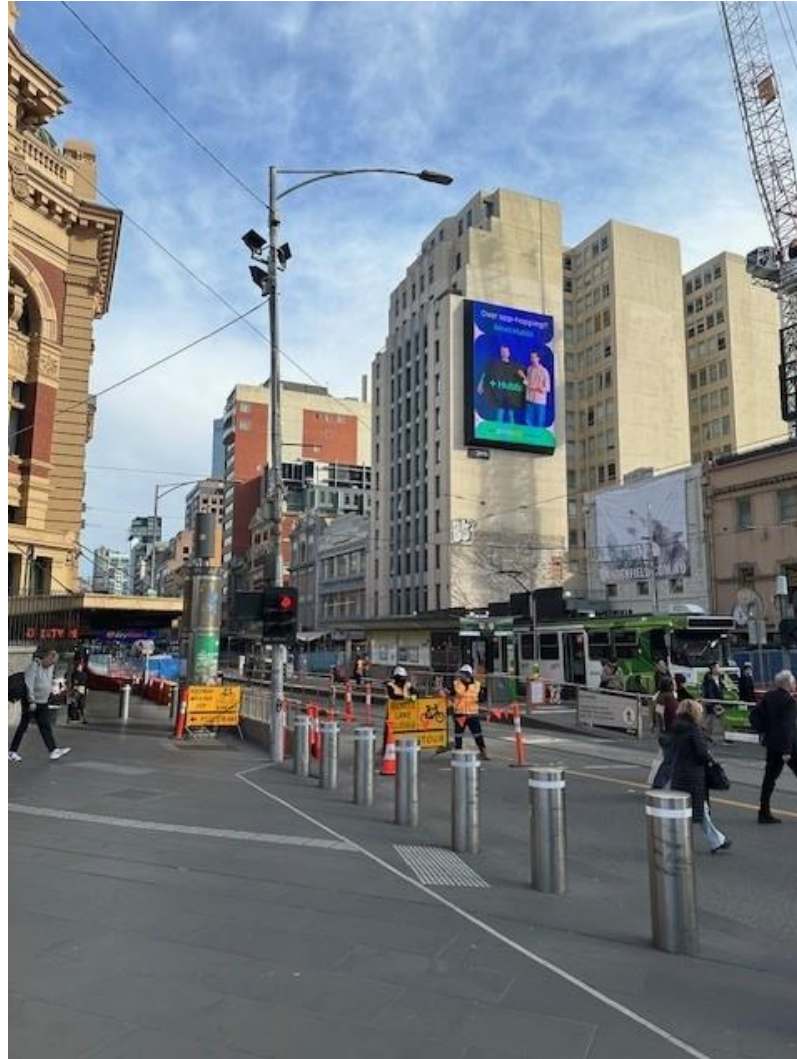


ACTIVITY	JUNE	JULY	AUGUST	SEPT	OCT	NOV	DEC
City Square structure works up to ground floor	—————						
Demobilisation of City Square tower cranes				—————			
Swanston Street footpath closure at Flinders Quarter site entrance	—————						
Collins Street works				—————			
Flinders Street drainage works requiring Flinders WB closure	—————						
City Square above ground structures	—————						
City Square civil and landscaping			—————				
Flinders Street Eastbound closure	—————						

# Progress Update: Swanston Street West



# Progress: Flinders Street drainage works



OFFICIAL: Sensitive

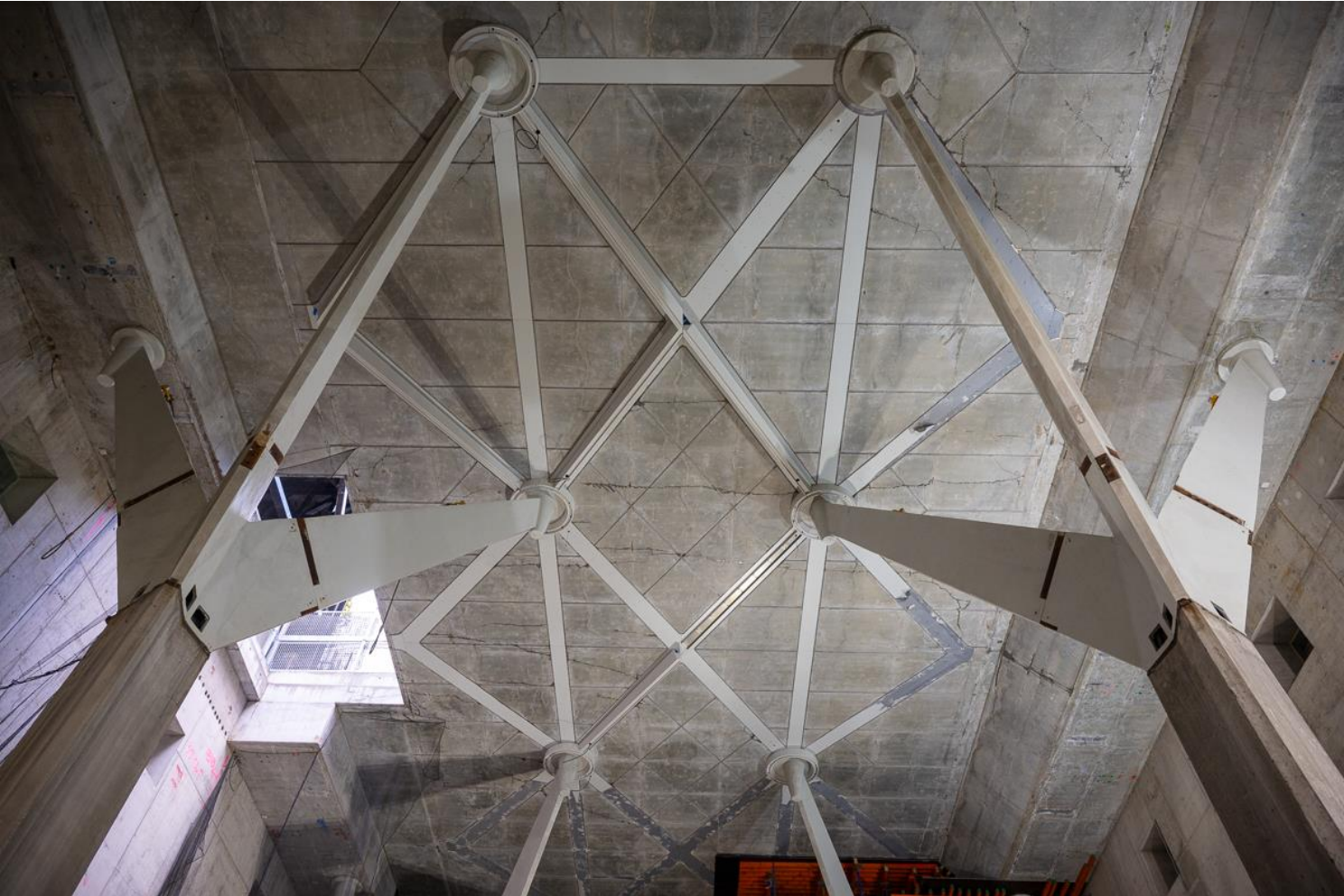


# Progress: Flinders Quarter above ground works



OFFICIAL: Sensitive

# Progress: City Square "The Crypt"



# Progress: City Square ground floor slab





# Questions



**Update on City of Melbourne's Little Streets  
(Shared Zone) program**

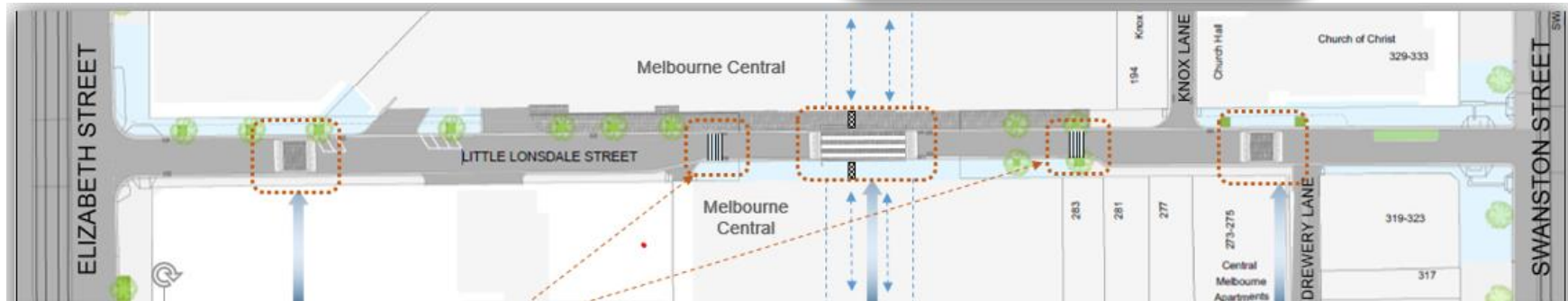
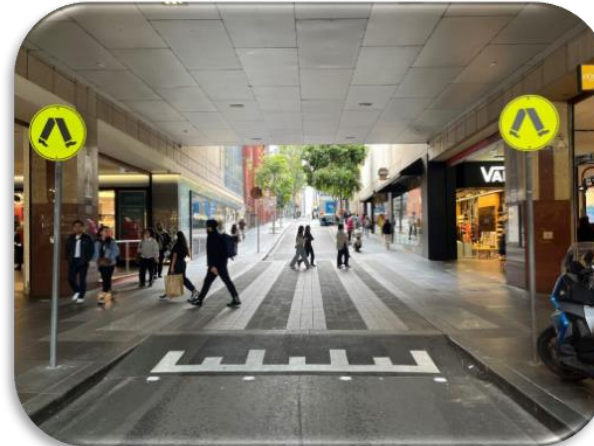
**Metro Tunnel Community Reference Group:**  
24 June 2024  
**Presenter:** Shirlene Yee Yet,  
Manager Transport Engineering



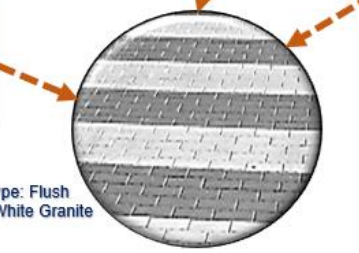
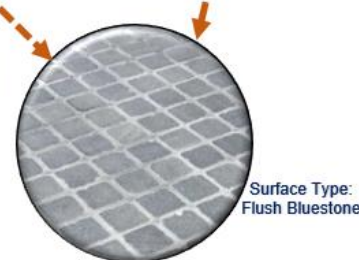
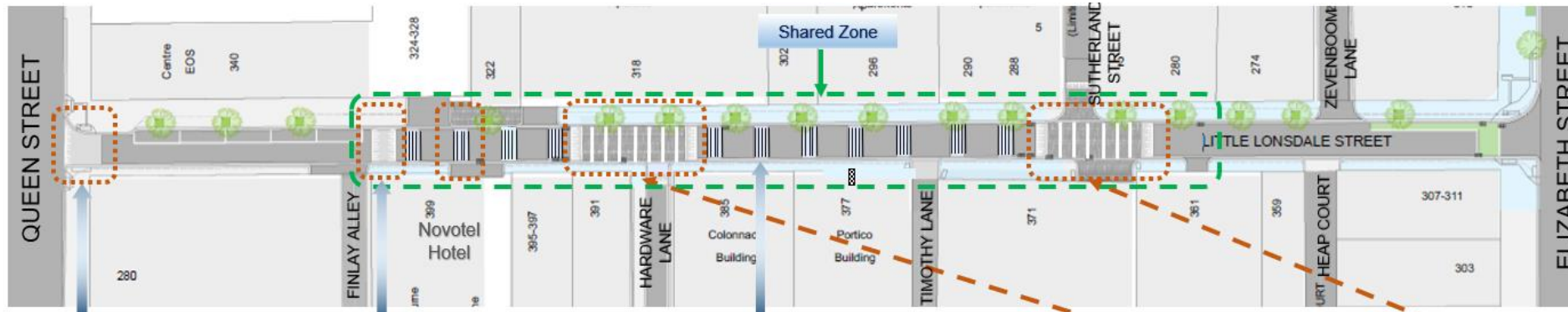
**CITY OF MELBOURNE**

- Shared zones in little streets in their temporary form were not supported by Department of Transport and Planning (DTP) as the road and pedestrian environments didn't include enough supporting infrastructure to make the streets feel like credible shared spaces.
- The 20km/h speed zones that were implemented as part of the little streets trial have been approved by the DTP as permanent speed limits.
- Actions planned or being undertaken:
  - temporary trialled shared zones have been removed and 20km/h speed limits installed in all little streets.
  - zebra crossings that were removed as part of the shared zone works are being reinstalled.
  - to further improve the streetscape in little streets, temporary spike down rubber road humps and orca infrastructure will be converted to permanent or removed and redundant signs and lines removed. These works are underway.
- Little Lonsdale Street was supported by DTP and used to demonstrate a pedestrian priority environment show casing the following two streetscape scenarios:
  - Pedestrian crossings with streetscape when clear north-south pedestrian desire crossing points were identified and
  - Shared zones with streetscape when land use attractors were present on both sides and along a section of the street, which create staggered crossing patterns.

# Little Lonsdale Street between Queen and Elizabeth streets – Pedestrian Crossing



# Little Lonsdale Street between Elizabeth and Swanston streets – Shared Zone







**CITY OF MELBOURNE**

MELBOURNE.VIC.GOV.AU

© City of Melbourne

**Creative  
Program Update  
– State Library  
- Town Hall**

# Little La Trobe Street - jersey barrier banners installed

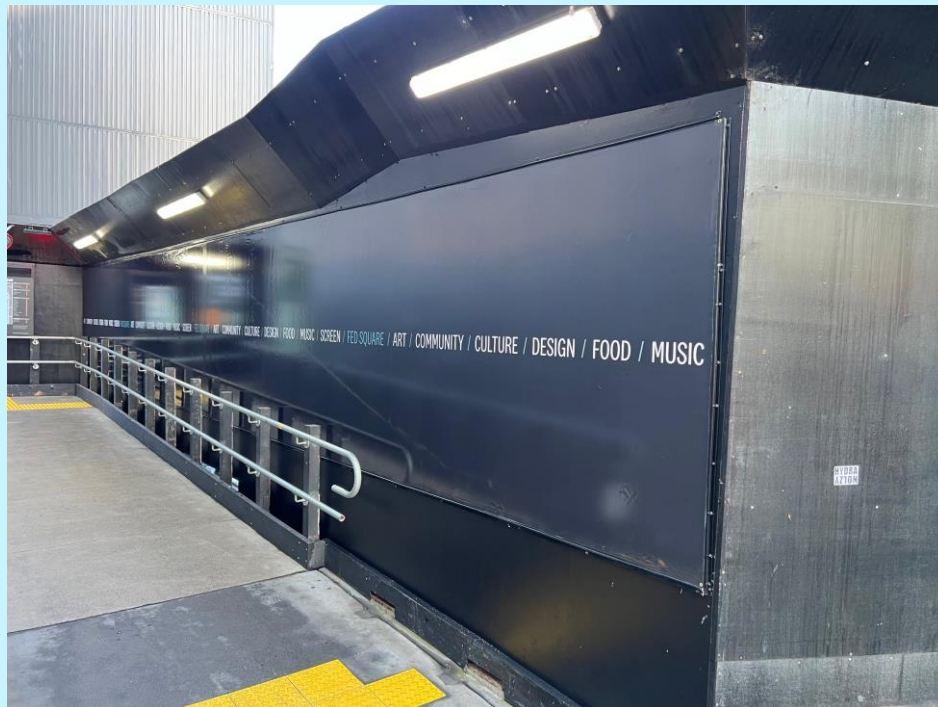


Creative  
Program



# Fed Square

- Replaced Aunty Zeta's work 'Boorimul Booboop Narrkwarren (Emu Family) roaming free on Country' at the request of Fed Square

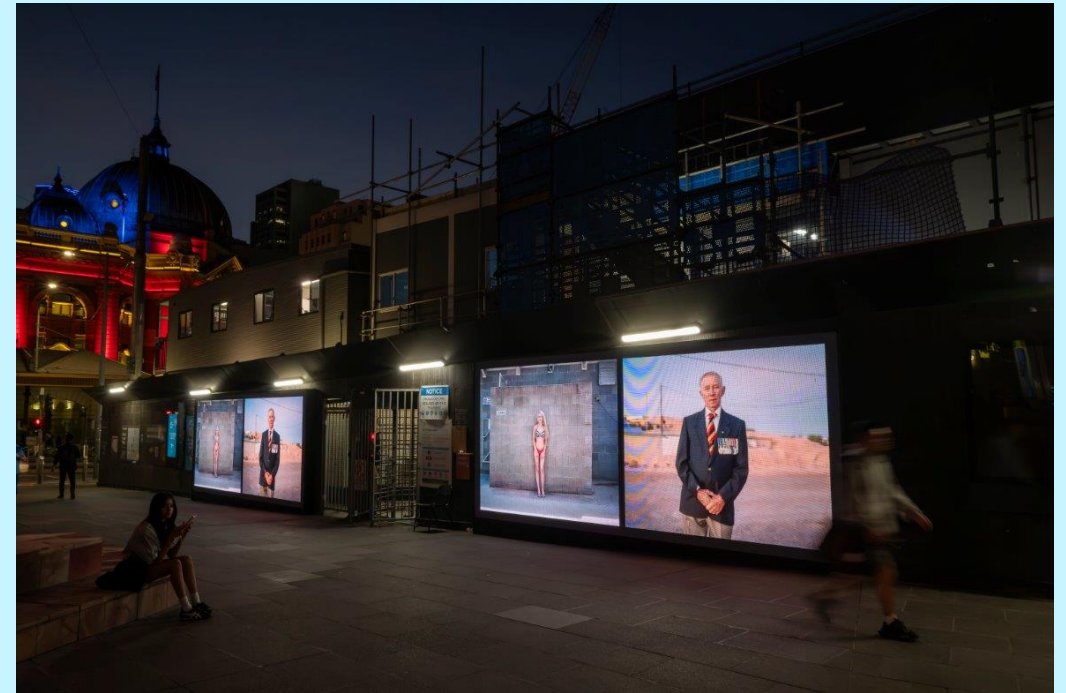


# Adam Ferguson as part of PHOTO 2024 Fed Square screens



Creative  
Program

*Big Sky* screened on a loop from 7am to 11pm daily from 1 – 24 March



# Under Foot City Square



Creative  
Program



## Events delivered

# Artefacts: A virtual reality experience State Library/ Melbourne Design Week



Creative  
Program

- Initially a three-day experience, high demand saw this extended to five days
- Masterclass with the filmmaker on Thursday 23 May offered insights into his creative approach





# Rail as Civic Infrastructure, Open House Melbourne RMIT Storey Hall, Sunday 19 May



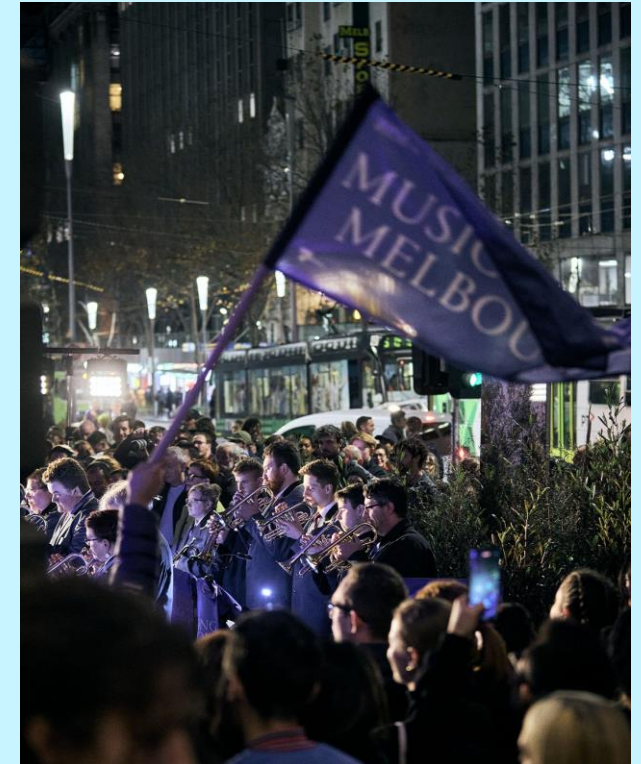
Creative  
Program

- Keynote presentation from RSHP architect Ivan Harbour, brief presentation by Ingrid Bakker from Hassell, followed by panel discussion with Jill Garner
- 500+ attendees
- Approximately 50 questions asked via Slido demonstrating keen interest from the audience



# RISING: Acid Brass

- Brass bands playing Acid Brass music, a Jeremy Deller invention!
- Performed Friday 7 June near Town Hall Station – Glenferrie Brass and Saturday 15 June, opposite State Library Station – Western Brass



## Upcoming projects

# Vandal Scott Alley (installing this week)

- Artist worked with very specific site requirements to create an artwork that will fit the space

