



The new Surf Coast Highway rail bridge

Community update

October 2024



Level crossings gone and upgraded stations open

Two dangerous and congested level crossings at Surf Coast Highway and Fyans Street are gone and upgraded stations featuring improved access for passengers are now open at Marshall and South Geelong, following a 72-day winter construction blitz.

More than 1,000 workers worked around the clock to install the final sections of eight kilometres of duplicated track and improve reliability for services – making it easier for trains to pass each other and reducing unexpected delays.

The upgrades have delivered safer and more accessible stations for the booming communities south of Geelong, and have reduced congestion for the thousands of motorists travelling on Surf Coast Highway and Fyans Street each day.

Crews will continue minor works at the stations including finishing the forecourt and lifts at Marshall Station, and Yarra Street car park entrance and lifts at South Geelong Station, with work on landscaping and walking and cycling paths to continue in Spring.

The South Geelong to Waurin Ponds Duplication is part of the Australian and Victorian governments' more than \$1 billion investment in the staged upgrade of the Geelong Line – Victoria's busiest regional rail line – as part of the Regional Rail Revival program.

Project benefits:



2 level crossings gone for good for 46,000 vehicles travelling along these roads each day



2 upgraded stations with better accessibility



8km of duplicated track to improve reliability



5km of walking and cycling paths connecting South Geelong to Waurin Ponds



300 new car spaces providing more parking options



For more information visit

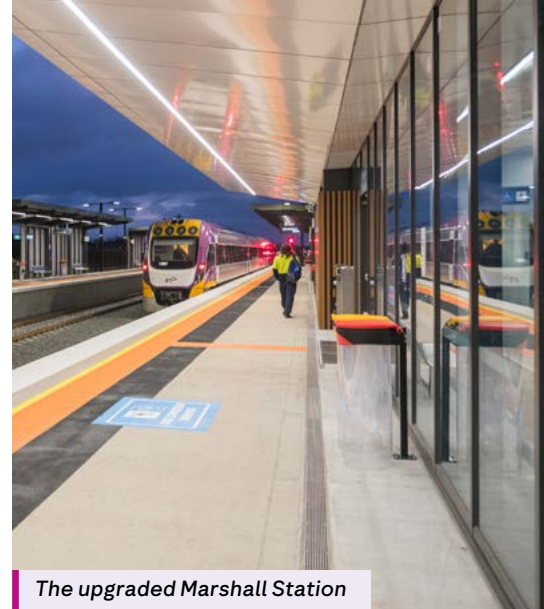
regionalrailrevival.vic.gov.au/geelong

VICTORIA'S BIG BUILD

Marshall Station upgrade

Passengers are benefiting from improved accessibility, amenity, safety and comfort at the upgraded Marshall Station. The upgrades include:

- a new station building and forecourt with an enclosed waiting room
- a second platform with entrance path off Marshalltown Road
- a new accessible pedestrian overpass with ramps, lift and stairs
- 270 new car parks with increased lighting and CCTV coverage
- community choice 'native cluster everlasting' colour palette featured in the forecourt and platform canopies.
- more parkiteers and bike hoops.



The upgraded Marshall Station

New landscaping

Marshall Station will have a layered approach to planting including a tree canopy, understory planting and grasslands.

Diverse plants, with a focus on Indigenous species, will line the station precinct and rail corridor, providing nesting opportunities for local wildlife and increasing community connection to nature.

More than 4,700 trees will be planted, including more than 2,500 trees around the Surf Coast Highway precinct. Trees, shrubs and low-lying plants at various heights will assist in moderating climate, while providing food and important habitat for wildlife.

The Wadawurrung Traditional Owners Aboriginal Corporation and City of Greater Geelong have been consulted in the development of the landscaping plans, including climate-resilient planting.



Concept design of landscaping at Marshall Station, subject to change

Surf Coast Highway rail bridge

Removing the congested level crossing provides quicker journeys and improved safety for more than 29,000 vehicles travelling along Surf Coast Highway every day.

Key benefits include:

- reducing congestion and improving travel times by eliminating delays caused by boom gates down
- improving safety by separating trains from vehicles and pedestrian crossings
- new green open space, and walking and cycling connections
- no more train horns and level crossing bells ringing.

The community will benefit from the new walking and cycling paths with increased lighting to improve safety. The new paths will be completed in Spring, connecting to local rail trails and South Geelong, Marshall and Waurm Ponds stations.

The colour palette 'coastal regions' green was selected by locals and features on the bridge piers, paying homage to the coastal regions beyond Geelong, such as the Great Ocean Road.



The new Surf Coast Highway rail bridge

Walking and cycling paths

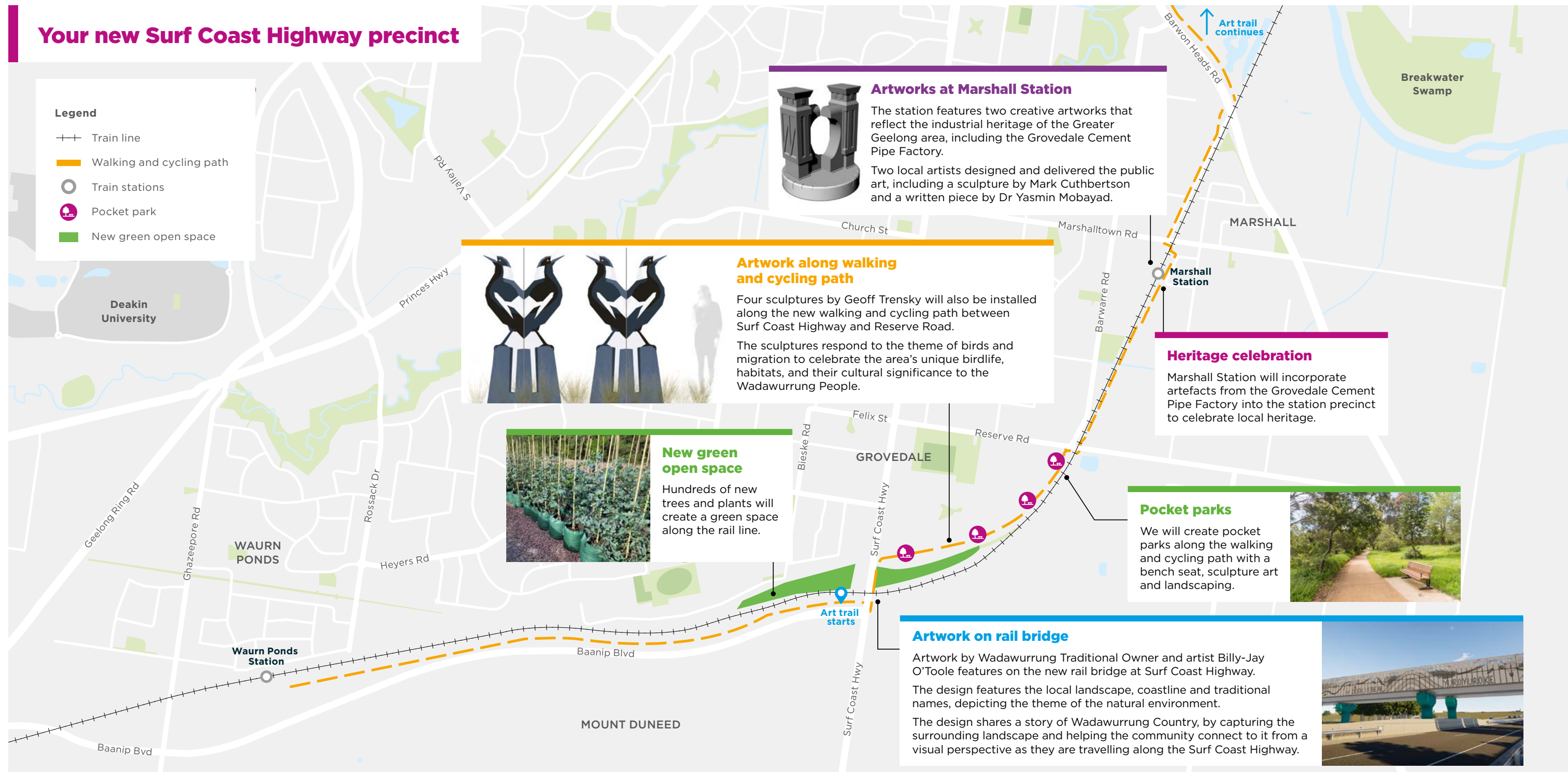
More than 5km of new walking and cycling paths will create a continuous connection between South Geelong and Waurm Ponds for the first time. This will encourage more physical activity within the community and enable safer walking and cycling journeys for the growing communities south of Geelong.

The new paths will follow the rail line and connect Geelong's various trails, including the Barwon River Trail, the Bellarine Rail Trail and the Waurm Ponds Trail.

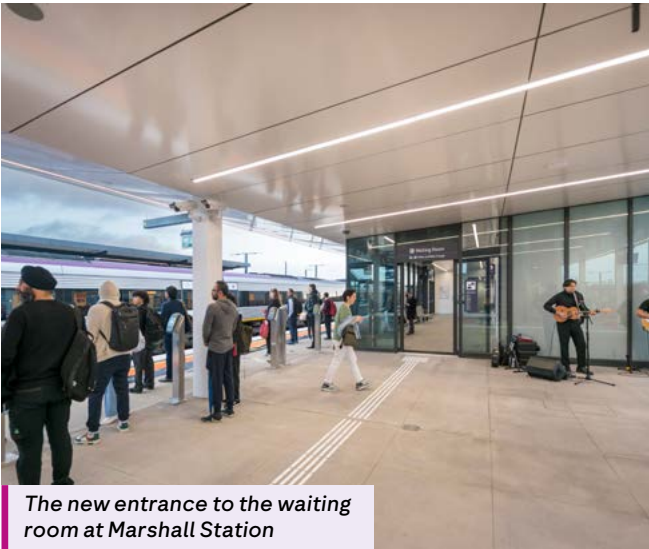
We're providing places for the community to rest and relax along the new walking and cycling paths, including bench and boulder seating, picnic tables and pocket park facilities, with work to be completed on the paths in Spring.

The new paths will feature 11 public artworks, creating an art trail between South Geelong and Grovedale.

Your new Surf Coast Highway precinct



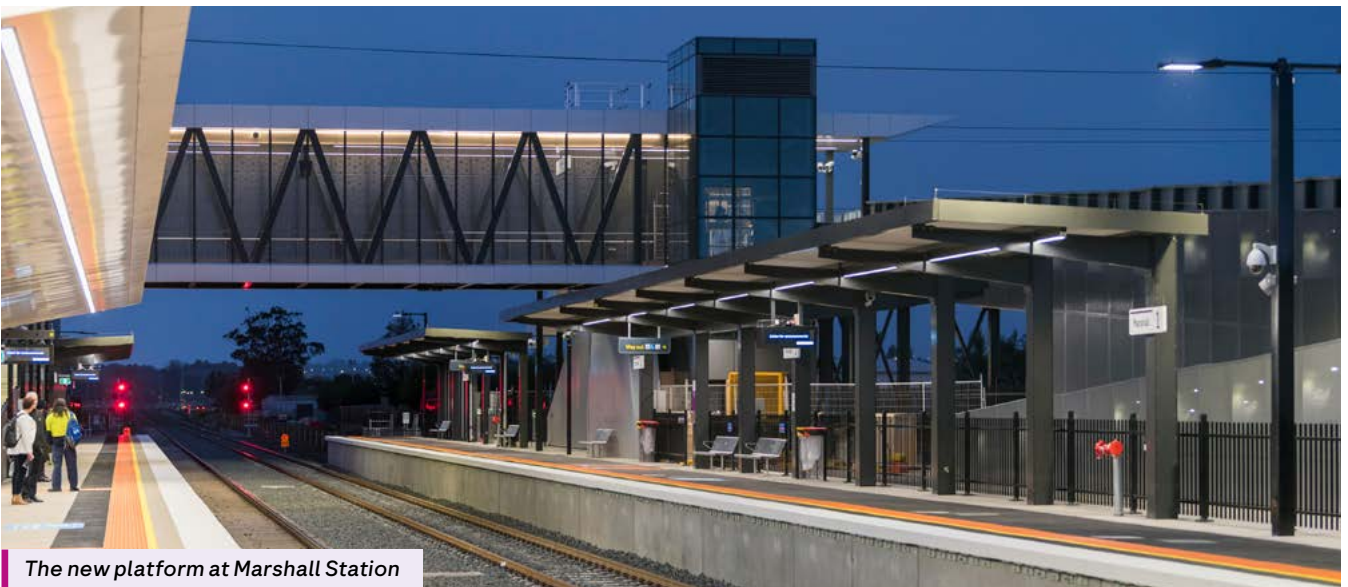
Day one after major construction blitz



The new entrance to the waiting room at Marshall Station



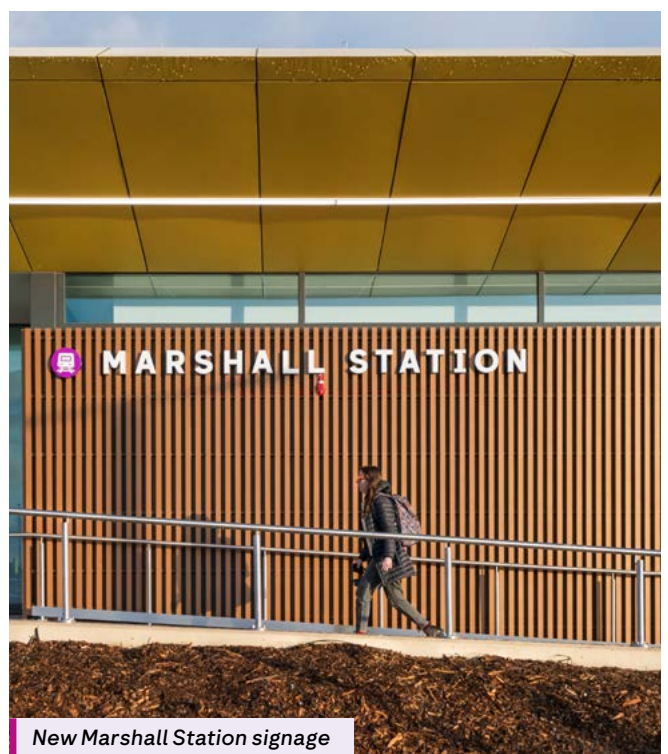
The new waiting room at Marshall Station



The new platform at Marshall Station



Upgrades to the original platform at Marshall Station



New Marshall Station signage

Save the date

Join us on **Saturday 16 November** to celebrate the opening of the new walking and cycling path and the upgrades to South Geelong and Marshall stations.

More info: regionalrailrevival.vic.gov.au/geelong



The level crossing free Surf Coast Highway



Artwork by Wadawurrung Traditional Owner and artist Billy-Jay O'Toole

regionalrailrevival.vic.gov.au
regionalrailrevival@railprojects.vic.gov.au

1800 105 105 (call anytime)



For languages other than English
please call (03) 9209 0147

Please contact us if you would like this information in an accessible format. If you need assistance due to a hearing or speech impairment, visit relayservice.gov.au



Australian Government
BUILDING AUSTRALIA

