



Heatherton Community Reference Group

Meeting #13

19 August 2025



We respectfully acknowledge the Traditional Owners of this land
and pay respect to their Elders, past and present.



Welcome

Agenda

Topic	Speaker
Welcome	Kim
Actions	All
Addressing questions	All
Environmental monitoring	All
Communications and engagement update	All
Initial and Early Works update	Laing O'Rourke (LOR)
Break	
Tunnels South update	Suburban Connect (SC)
Forward program	LOR and SC
Other business	All

Actions

Actions | Current

CRG meeting date	Action	Status
24 June 2025	SC to investigate if cleaning services such as air conditioning filter cleaning and solar panel cleaning can be provided.	Ongoing
24 June 2025	SRLA and SC to investigate if gate can be provided at southern entrance to the Kingston Walk Linear Reserve.	Ongoing
24 June 2025	SRLA to provide an update the Heatherton public open space offset for the stabling facility.	Ongoing

Addressing questions

SRL East works |

Lighting on Rigs at Night

- The western tunnel entrance is located within Moorabbin Airport protected airspace
- Construction equipment such as cranes or rigs requires a permit from the aviation authorities.
- The lighting installed on top of the equipment is a regulatory condition specified in the permits for safety reason and must be followed by Suburban Connect and SRLA

SRL East works |

Noise and vibration modelling

- SRLA and Suburban Connect have completed baseline environmental assessments including noise and vibration to inform the construction impacts associated with Tunnels South.
- When planning for periods of construction Suburban Connect will model construction activities, including machinery used, working hours and construction methodology. The model will predict what the impact of noise and vibration will be on surrounding households, inform any mitigation requirements (including changes of methodology), and determine what support measures are offered (including offers of relocation).
- The Independent Environmental Auditor conducts audits at regular intervals to evaluate compliance with the Environmental Management Framework (EMF) and environmental performance requirements (EPR).

SRL East works |

Onsite Monitoring

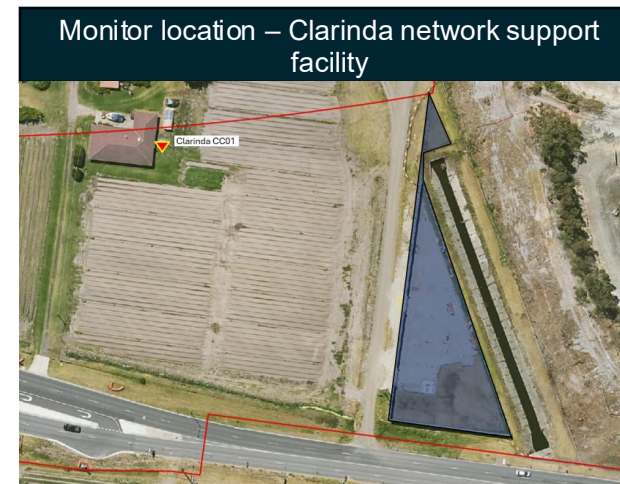
- Automated unattended noise/vibration monitoring is undertaken 24 hours a day on all Suburban Connect sites. The monitoring systems alert Suburban Connect when noise or vibration exceed modelled levels.
- In such instances, Suburban Connect investigates the source of the exceedance and then responds with any mitigations, so far as is reasonably practicable.
- To-date monitoring of noise and vibration emissions during works at the western tunnel entrance has not identified exceedances of modelled emissions.
- In addition, Suburban Connect undertake attended monitoring to validate modelled and real impacts
- We follow best practice state and federal government OHS and Worksafe standards to ensure the safety of our workers and the local community.
- Noise is felt differently by people and Suburban Connect offer different respite options including alternative workspaces to provide daytime breaks, respite vouchers and acoustic treatments

Environmental monitoring

Air quality, noise and vibration monitoring at Heatherton/Clarinda

- From June to August there were no TARP events at the Suburban Connect or Early Works sites
- Ongoing mitigations are in place, including water carts, hoses and street sweeping
- There have been zero construction related noise or vibration exceedances from June to August associated with Early Works or Suburban Connect sites

****TARP - Trigger Action Response Protocol**



Asbestos air monitoring – western tunnel entrance | Monitoring results

Date	Sample Location	Sample period (start-finish)	Avg. flow (mL/min)	Fibres per mL of air
Monday 14 July 2025	Southern boundary near Kingston Road	06:48 – 15:07	1200	<0.01
	Western boundary adjacent residential area, on fence	06:55 - 15:17	1200	<0.01
Wednesday 16 July 2025	Western boundary near residential properties, on fence	07:16 - 15:17	1200	<0.01
	Southern boundary near Kingston Road	07:21 – 15:21	1200	<0.01
Thursday 17 July 2025	Western boundary near residential properties, on fence	06:59 - 15:27	1200	<0.01
	Southern boundary near Kingston Road	06:57 – 15:34	1200	<0.01
Friday 18 July 2025	Western boundary near residential properties, on fence	06:55 – 13:46	1200	<0.01
	Southern boundary near Kingston Road	06:51 – 13:28	1200	<0.01
Saturday 19 July 2025	Southern boundary near Kingston Road	06:47 – 12:37	1200	<0.01
	Western boundary near residential properties, on fence	06:43 – 12:34	1200	<0.01

Note: This table provides a sample of results across multiple monitoring sites to provide an overview of the results across the worksite.

Monitoring for the presence of any airborne asbestos fibres has been occurring at the Western Tunnel Entrance since 13 September 2024.

All air monitoring results to date have been below the limit of detection for the sampling method (<0.01 fibres/ml of air), providing assurance the controls in place are effective.

Communications and engagement update

Communication and engagement | Update

- Since last CRG (June), Laing O'Rourke received **4 complaints** from 4 residents (as of 18 August)
- Complaints were about traffic impacts - road condition, truck movements, signage and traffic light sequencing
- Since last CRG (June), Suburban Connect received **36 complaints** from 20 residents (as of 18 August).
- Key themes included:
 - Vibration and construction noise incl. piling
 - Four related to a truck/ crane in Nicholas Grove (while not related to SC works, was related to Delta site)

Communication and engagement | Update

Acoustic assessments

- We have met with over 80 residents in their homes since early-May.
- Our glazing contractors are now visiting eligible properties to measure up windows, prepare quotes and arrange for installation commencing from mid August.
- We will meet with properties eligible for fencing and landscaping later this year.

Support for local traders

- Suburban Connect has been working with local traders impacted by SRL works including; Diacos Nursery, Ali's Vietnamese and The Clayton Hotel. We have been supporting local traders by offering respite vouchers for residents to use at these businesses during our works.

Community Crew

- Our friendly crew have visited over 20 properties since June offering car and window washes to local residents.



Initial and Early Works

Current works

Eastern tunnel entrance

- Stage 2 excavation works underway from 13 August to late-August
- Final stage of excavation planned in October 2025
- Strut installation will recommence in September until October 2025.



Eastern tunnel entrance

Stabling network support facility

- 66kV cable pulling and testing ongoing (SRLA)
- Integrated testing ongoing
- Network support facility operational from October (tbc)



Network support facility

Current works | Kingston Road / Old Dandenong Road

- Service relocation works (inc. telecommunications) will continue intermittently in September and October
 - Traffic disruptions on Kingston Road and Old Dandenong Road including lane and road closures during the day and at night
- Kingston Road centre median reinstatement works in September
 - Traffic disruptions on Kingston Road including overnight road closures
- Street-light works at the heavy vehicle entrance (Kingston Road west) in October
 - Traffic disruptions on Kingston Road including lane and road closures

Break

Tunnels South update

Western Tunnel Entrance, Heatherton

Current works | Western Tunnel Entrance

- Site levelling and excavation nearly complete
- Removal of asbestos containing material ongoing
- Creation of hardstands ongoing until early September
- Mobilising site offices, water treatment plant
- Utilities and drainage works completed
- Guide wall construction commenced
- Piling for acoustic shed has commenced
- Deliveries via Kingston Road entry



Bentonite
plant
installation

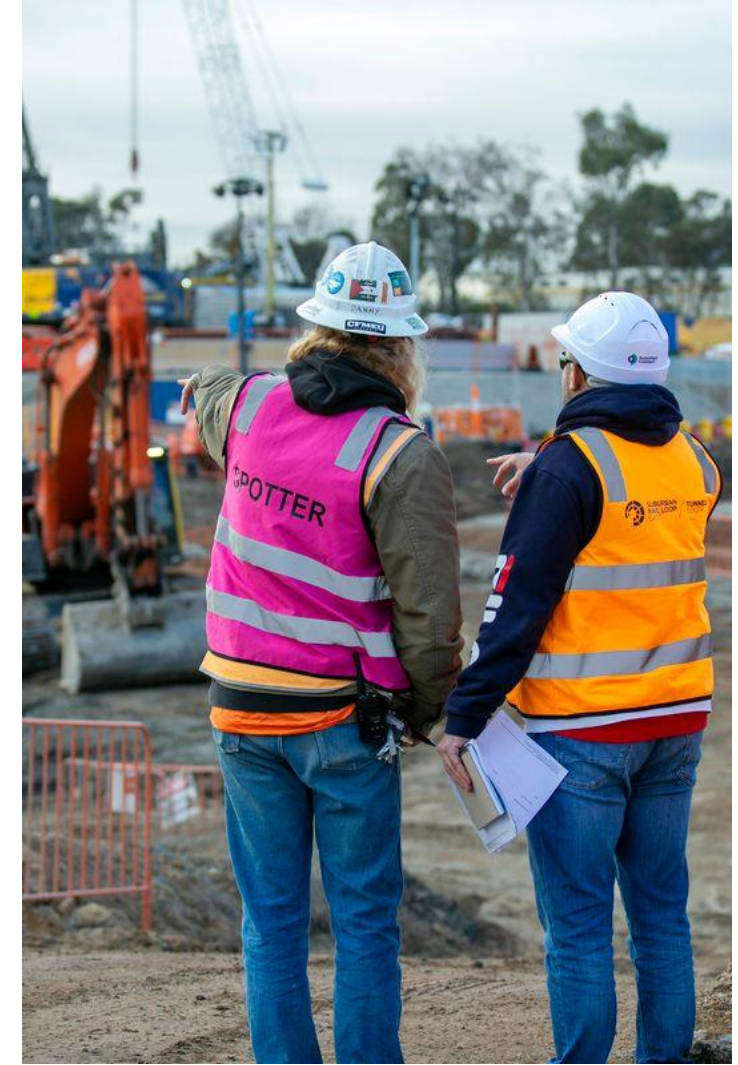


Foundation
for water
treatment
plant

TBM Launch Site, Clarinda

Current works | TBM Launch Site

- Ponds filled to increase available works area. This section will house slurry treatment facilities.
- Piling ongoing in eastern and western tunnel shafts
- Ground improvement works for cross-passages to begin in September within the site compound and Alex Fraser Recycling Group site.
- D-Wall construction underway in eastern and western tunnel shafts
- Site offices and parking now complete



Forward program

Works 2025	Aug	Sep	Oct	Nov	Dec
Kingston Road					
Power connections (UE/SRLA works)					
Lighting connections					
Network support facility (NSF)					
Building construction and fit out					
Eastern tunnel entrance					
Excavation and steel strut installation					
Base slab concrete pours					
Western tunnel entrance					
Site levelling and excavation, creation of hard stands, light vehicle entry, car park					
Guide walls					
Acoustic shed piling					
Diaphragm walls					
Jet grouting					

Clarinda | Works lookahead

OFFICIAL

Works 2025	Aug	Sep	Oct	Nov	Dec
Clarinda TBM launch site					
Bored piling					
D-wall					
Jet grouting					
East and west shaft excavation					
Kingston Road					
Water connection – westbound lane closure, approx. 2 weeks (TBC)					

NOTE: timing is indicative and subject to change

Other business