

PROJECT OVERVIEW



NORTHERN HIGHWAY INTERSECTION UPGRADE

2026



We're upgrading the intersection of Northern Highway and Watson Street in Wallan to improve traffic flow and make the area safer and more efficient for everyone.

Key features of the upgrade

To improve the intersection, we'll:

- Add new lanes on the Northern Highway at the intersection to improve traffic flow.

- Build a second right-turn lane for vehicles turning from Watson Street onto the Northern Highway heading north.
- Improve walking and cycling connections for safer, easier movement and better links to existing paths.
- Upgrade underground utilities, drainage, street lighting and signage to support the improvements.

The intersection upgrade along with the Watson Street Interchange upgrade will benefit up to 30,000 daily journeys in and around the town once complete.

Project timeline



Late 2025

- Site investigations and stakeholder engagement
- Appoint a construction partner



Early 2026

- Finalise the design and confirm construction staging approach
- Establish a site compound and prepare for major works



Mid-2027

Project completed



Sign up for updates
Subscribe for email and SMS updates
at bigbuild.vic.gov.au/roads-subscribe



Project benefits



Better traffic flow

New lanes will boost the benefits of the new freeway ramps and improve movement through the intersection.



Safer roads

Upgraded road surfaces and layout will improve safety for drivers, cyclists and pedestrians.



More reliable travel times

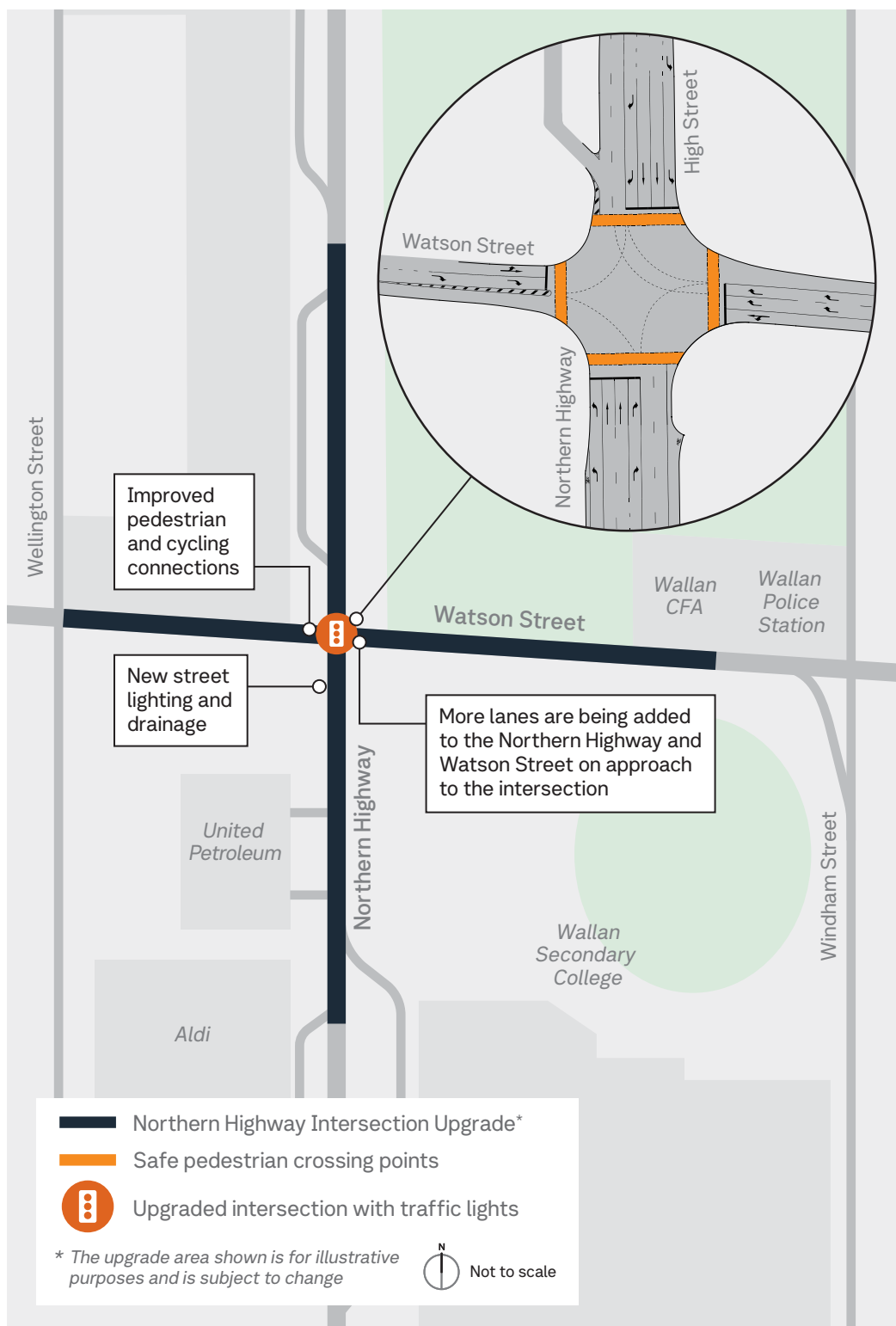
Reduced delays and new lanes will make journeys more predictable and efficient.

Improving local road links

The upgraded intersection will boost the benefits of the new freeway ramps being built on Watson Street at the Hume Freeway. Together, these improvements will make travel easier, reduce congestion, and provide safer, more efficient access through the area.

The upgrades will support future growth and strengthen freight connections between the Hume Freeway and Wallan East industrial estate. Construction activities will be coordinated across both projects to minimise disruption to the community.

Northern Highway Intersection Upgrade – project map



Sign up for updates

Subscribe for email and SMS updates at bigbuild.vic.gov.au/roads-subscribe or scan the following QR code.

bigbuild.vic.gov.au/roads



For languages other than English please call 9209 0147

1800 105 105 (call anytime)

contact@bigbuild.vic.gov.au



Please contact us if you would like this information in an accessible format. If you need assistance due to a hearing or speech impairment, visit relayservice.gov.au