

## What does the Metro Tunnel Project mean for me?

Construction is underway on the Metro Tunnel. It will increase the number of trains we can run across Melbourne, and means less crowding and less waiting.

By taking our busiest train lines through a new tunnel under the CBD, it will free up space in the City Loop to run more trains to and from the suburbs. That means more trains and a more reliable train network for us all when the Metro Tunnel opens from 2025.

## Hours off your weekly commute

Passengers will shave time off their journeys to Parkville and St Kilda Road by changing to Metro Tunnel services at Caulfield, Footscray, Melbourne Central and Flinders Street.









## Greater capacity

The Metro Tunnel will create room for more than half a million people to travel on the train network during peak periods every week.

## Hassle-free connections

The project will deliver more convenient journeys and hassle-free connections for train passengers every day.

## How does the Metro Tunnel benefit Melbourne?

-  Creates room to run more trains, more often, on lines across Melbourne
-  Reduces crowding at CBD stations
-  7,000 jobs created during construction
-  Connects some of the city's key destinations to Melbourne's train network for the first time
-  Travel time savings of up to 50 minutes a day to Parkville and St Kilda Road
-  Direct services to Melbourne's leading universities, hospitals and employment areas
-  More train trips will reduce road congestion
-  Lays the foundation for a truly international style metro system with turn up and go services

## Enter the world of the Metro Tunnel

Our visitor centre is a great place to discover more about Victoria's biggest ever public transport project. It's located at 125-133 Swanston Street across the road from Melbourne Town Hall.

## More information

To find out more and register for future email updates:

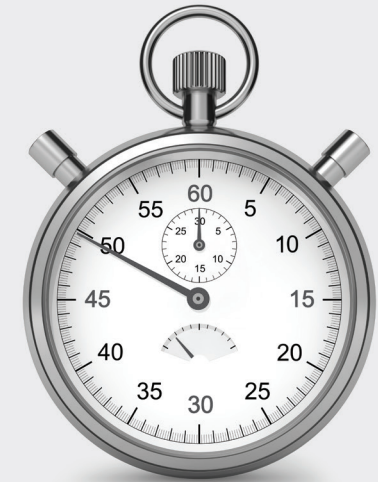
-  [metrotunnel.vic.gov.au](http://metrotunnel.vic.gov.au)
-  1800 105 105 (24 hours a day, 7 days a week)  
Press 2 and follow the prompts
-  [facebook.com/metrotunnel](https://facebook.com/metrotunnel)
-  Subscribe to eNews or construction notification emails: [metrotunnel.vic.gov.au/subscribe](mailto:metrotunnel.vic.gov.au/subscribe)

This information is current at the time of printing.  
Please visit [metrotunnel.vic.gov.au](http://metrotunnel.vic.gov.au) for the latest updates.

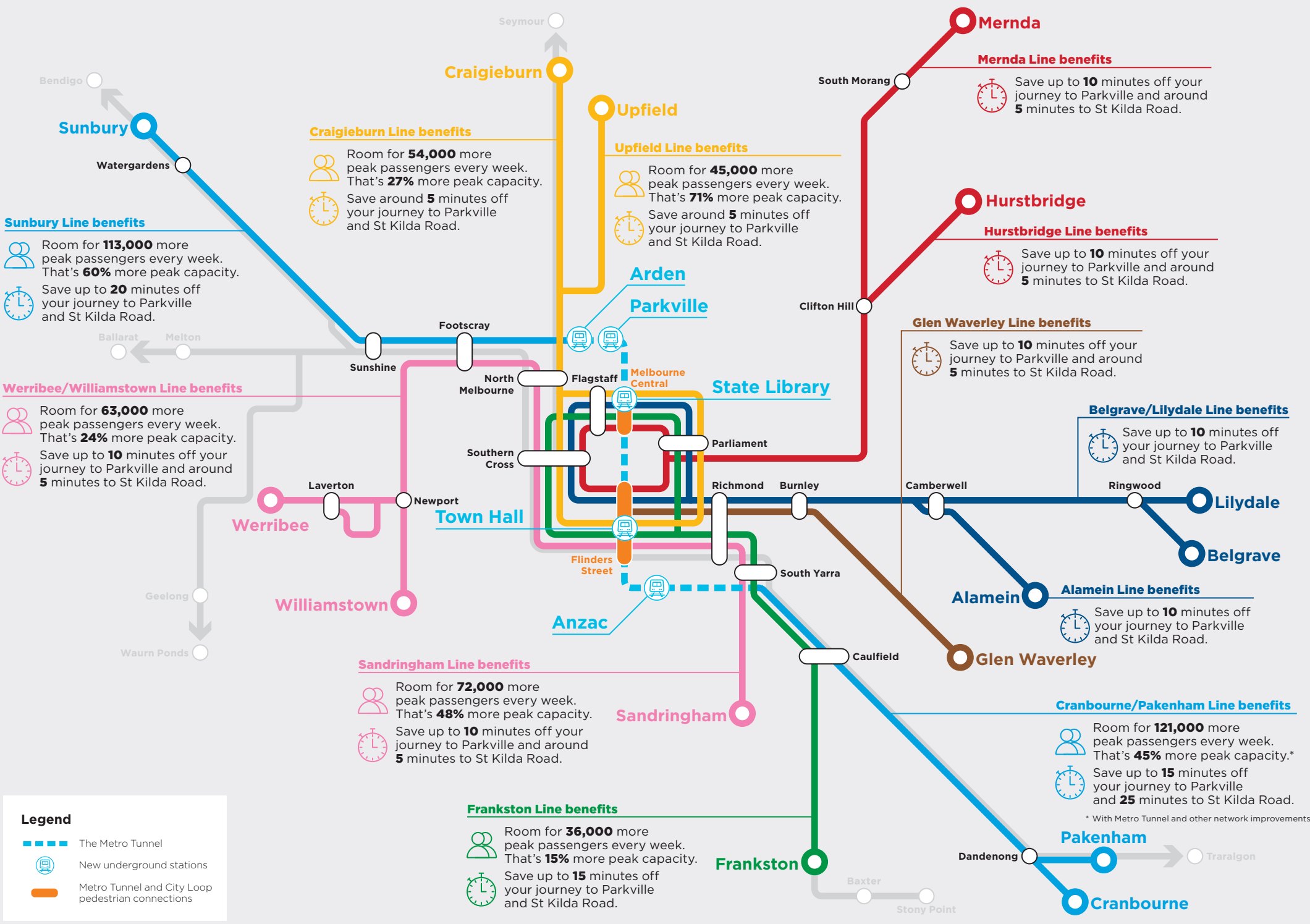


## Metropolitan lines

## The Metro Tunnel will save you time



By creating extra space in the City Loop, the Metro Tunnel means more trains, more often across Melbourne, and will save you time travelling to Parkville and St Kilda Road.



**Sunbury Line benefits**

Room for **113,000** more peak passengers every week. That's **60%** more peak capacity.

Save up to **20** minutes off your journey to Parkville and St Kilda Road.

**Werribee/Williamstown Line benefits**

Room for **63,000** more peak passengers every week. That's **24%** more peak capacity.

Save up to **10** minutes off your journey to Parkville and around **5** minutes to St Kilda Road.

**Legend**

- The Metro Tunnel
- New underground stations
- Metro Tunnel and City Loop pedestrian connections

**Craigieburn Line benefits**

Room for **54,000** more peak passengers every week. That's **27%** more peak capacity.

Save around **5** minutes off your journey to Parkville and St Kilda Road.

**Upfield Line benefits**

Room for **45,000** more peak passengers every week. That's **71%** more peak capacity.

Save around **5** minutes off your journey to Parkville and St Kilda Road.

**Sandringham Line benefits**

Room for **72,000** more peak passengers every week. That's **48%** more peak capacity.

Save up to **10** minutes off your journey to Parkville and around **5** minutes to St Kilda Road.

**Frankston Line benefits**

Room for **36,000** more peak passengers every week. That's **15%** more peak capacity.

Save up to **15** minutes off your journey to Parkville and St Kilda Road.

**Mernda Line benefits**

Save up to **10** minutes off your journey to Parkville and around **5** minutes to St Kilda Road.

**Hurstbridge Line benefits**

Save up to **10** minutes off your journey to Parkville and around **5** minutes to St Kilda Road.

**Glen Waverley Line benefits**

Save up to **10** minutes off your journey to Parkville and around **5** minutes to St Kilda Road.

**Belgrave/Lilydale Line benefits**

Save up to **10** minutes off your journey to Parkville and St Kilda Road.

**Alamein Line benefits**

Save up to **10** minutes off your journey to Parkville and St Kilda Road.

**Cranbourne/Pakenham Line benefits**

Room for **121,000** more peak passengers every week. That's **45%** more peak capacity.\*

Save up to **15** minutes off your journey to Parkville and **25** minutes to St Kilda Road.

\* With Metro Tunnel and other network improvements