

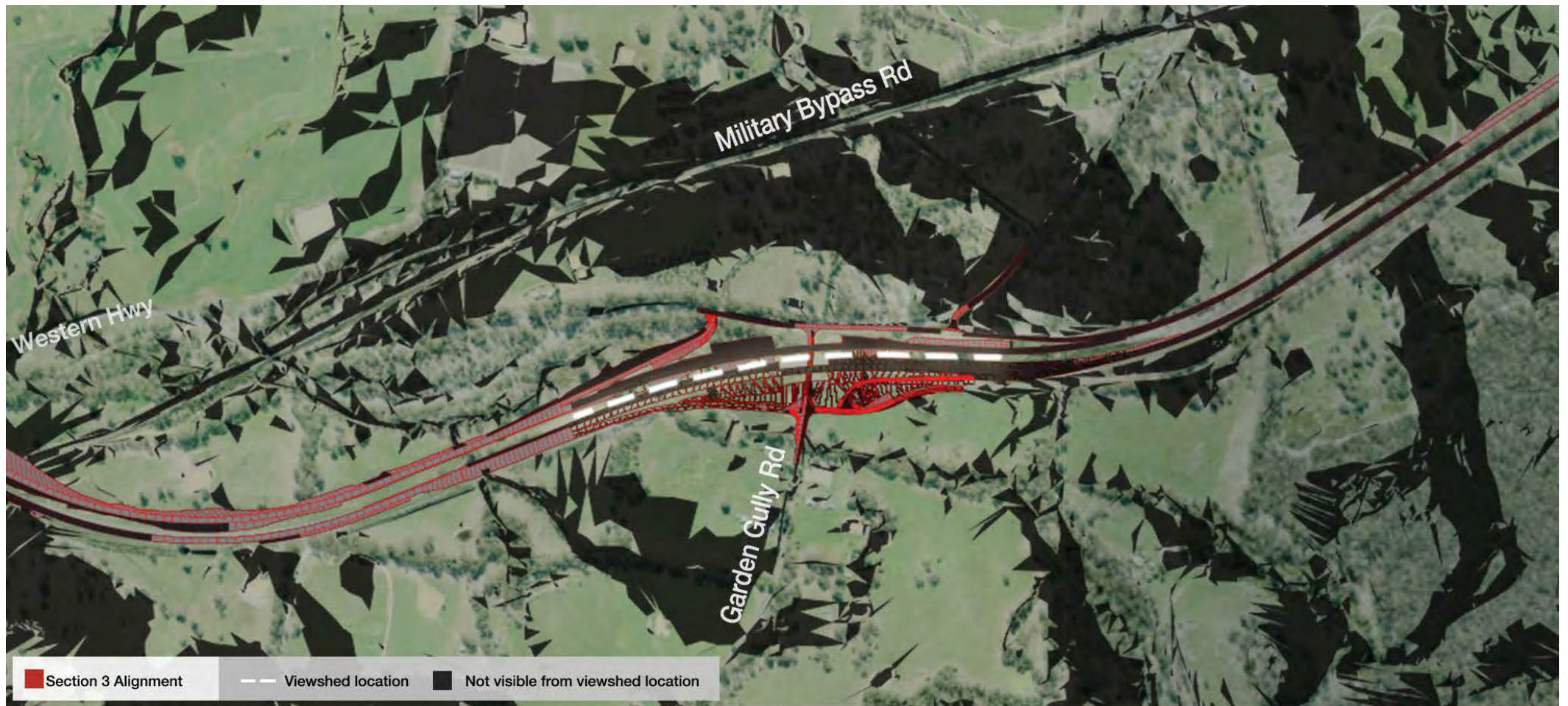
11.3 Appendix C – Viewshed Analysis Plans

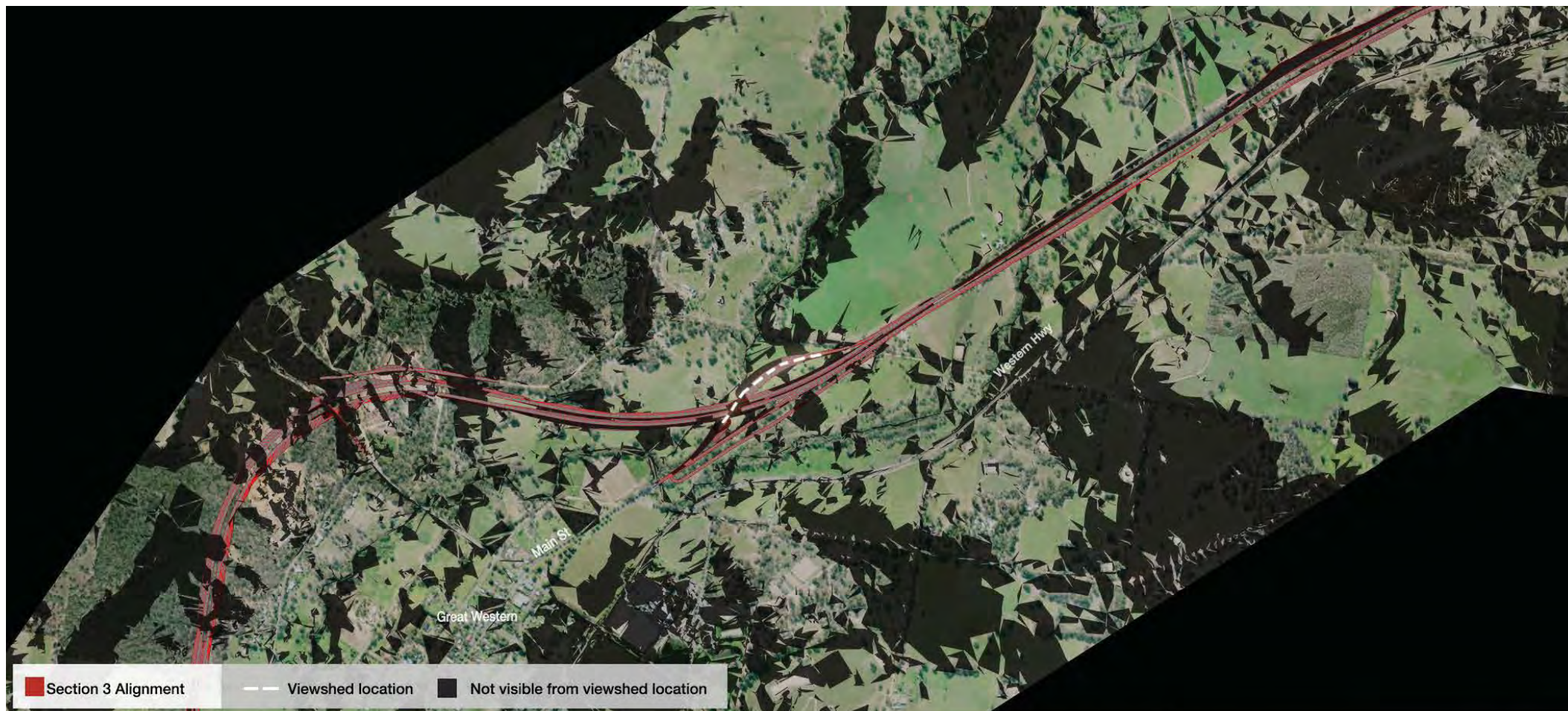
Map 16: Viewshed Analysis Plan, Ch. 6000 (Garden Gully Road Overpass)

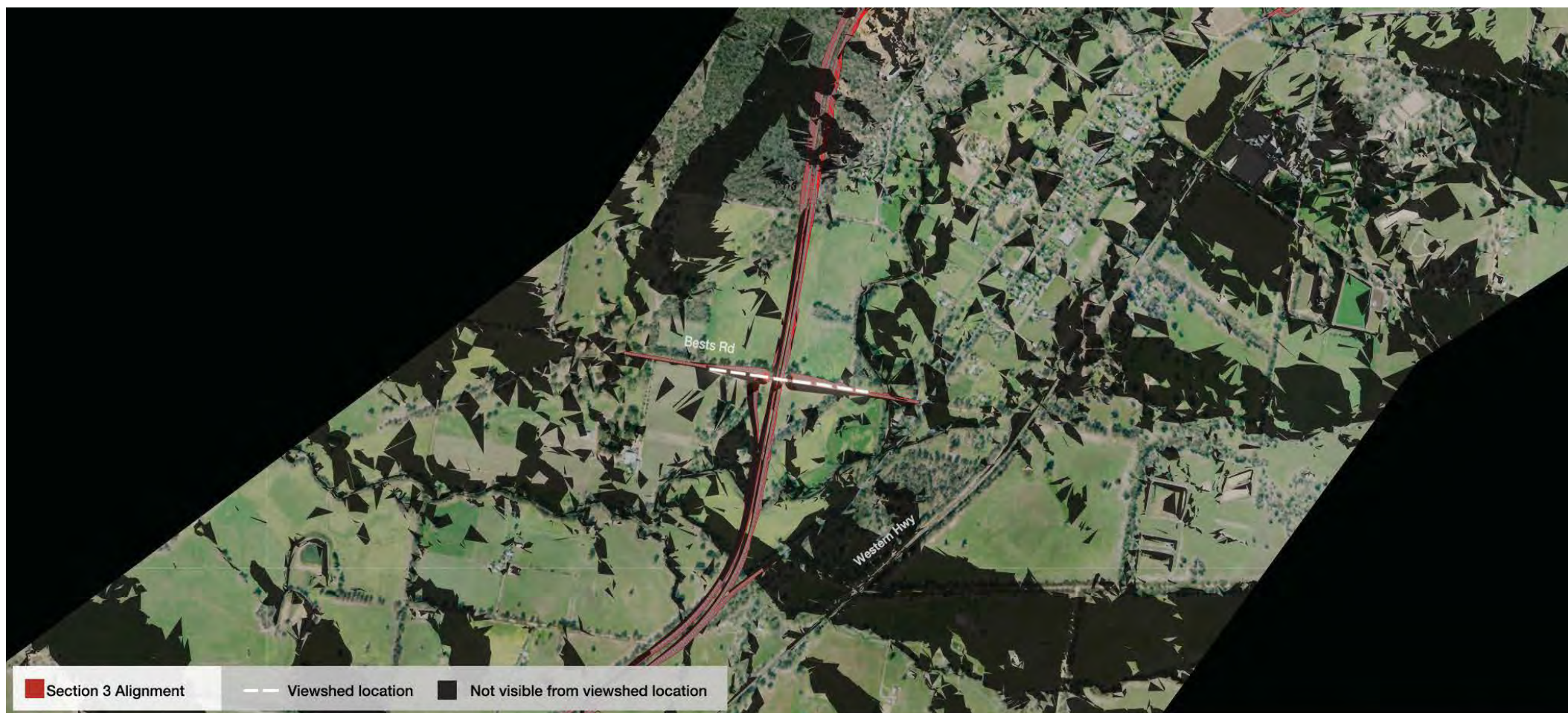
Map 17: Viewshed Analysis Plan, Ch. 11800 (Southbound Overpass)

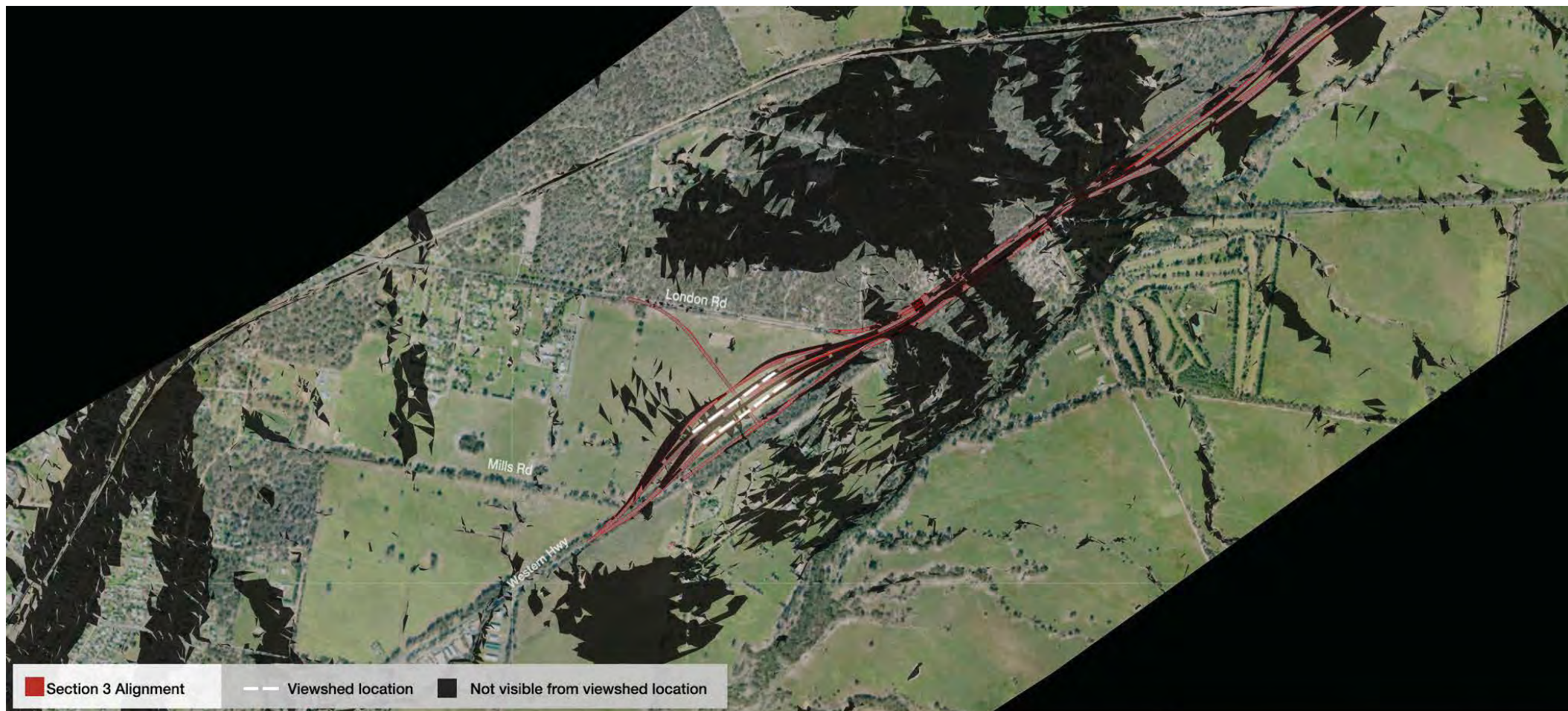
Map 18: Viewshed Analysis Plan, Ch. 15400 (Bests Road Overpass)

Map 19: Viewshed Analysis Plan, Ch. 23500 (London Duplication Road Overpass)









11.4 Appendix D – Photomontages

Photomontage 1: Location A, Garden Gully Road, Ch. 6000

Photomontage 2: Location B, Western Highway, Ch. 12400

Photomontage 3: Location C, Western Highway, Ch. 14000

Photomontage 4: Location D, Sisters Rocks, Ch. 22650

Photomontage 1

Section 3 , Location A, Garden Gully Road, Ch. 6000



Map showing photomontage location



Existing photo



Map showing 3D overview of the proposed alignment. White arrows represent photomontage camera location and angle of view. Existing and proposed vegetation is not modelled in the 3D model

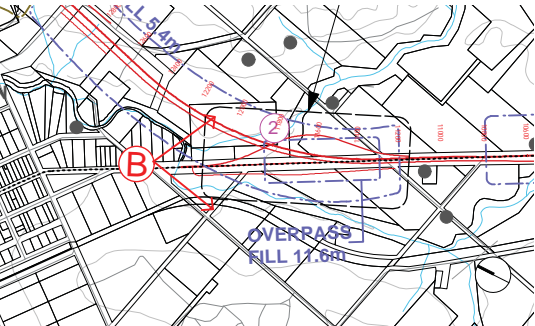


Photomontage showing proposed alignment with post-seven year standard landscape mitigation

- Notes:
- 1) The proposed landscape shown represents a post-seven year standard landscape mitigation
 - 2) Line markings are not shown
 - 3) Refer to section 4.2.1 for the description of the photomontage visualisation process

Photomontage 2

Section 2 , Location B, Western Highway, Ch. 12400



Map showing photomontage location



Existing photo



Map showing 3D overview of the proposed alignment. White arrows represent photomontage camera location and angle of view. Existing and proposed vegetation is not modelled in the 3D model



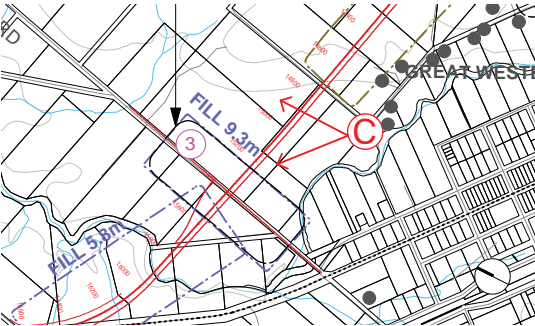
Photomontage showing proposed alignment with proposed landscape mitigation. The alignment is shown as a red line on the map.

Notes:

- 1) The proposed landscape shown represents a post-seven year standard landscape mitigation
- 2) Line markings are not shown
- 3) Refer to section 4.2.1 for the description of the photomontage visualisation process

Photomontage 3

Section 2 , Location C, Western Highway, Ch. 14000



Map showing photomontage location



Existing photo



Map showing 3D overview of the proposed alignment. White arrows represent photomontage camera location and angle of view. Existing and proposed vegetation is not modelled in the 3D model

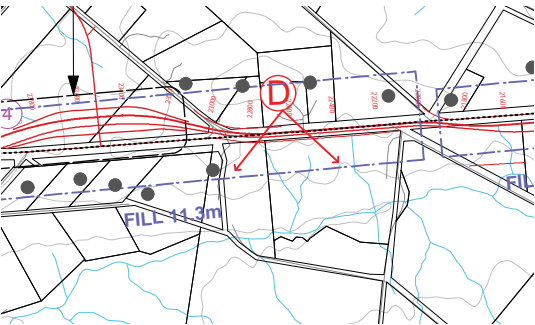


Photomontage showing proposed alignment with post-seven year standard landscape mitigation

- Notes:
- 1) The proposed landscape shown represents a post-seven year standard landscape mitigation
 - 2) Line markings are not shown
 - 3) Refer to section 4.2.1 for the description of the photomontage visualisation process

Photomontage 4

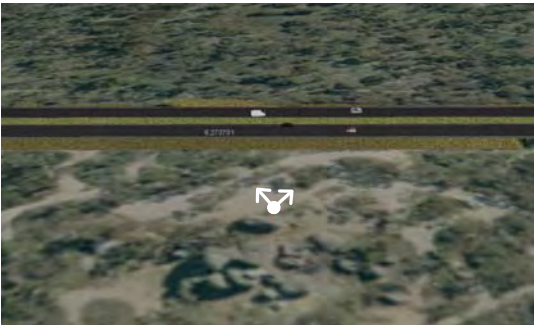
Section 3 , Location D, Sisters Rocks, Ch. 22650



Map showing photomontage location in relation to the proposed alignment



Existing photo



Map showing 3D overview of the proposed alignment. White arrows represent photomontage camera location and angle of view. Existing and proposed vegetation is not modelled in the 3D model



Photomontage showing proposed alignment with post-seven year standard landscape mitigation

Notes:

- 1) The proposed landscape shown represents a post-seven year standard landscape mitigation
- 2) Line markings are not shown
- 3) Refer to section 4.2.1 for the description of the photomontage visualisation process

11.5 Appendix E – Mitigation Concept Plans

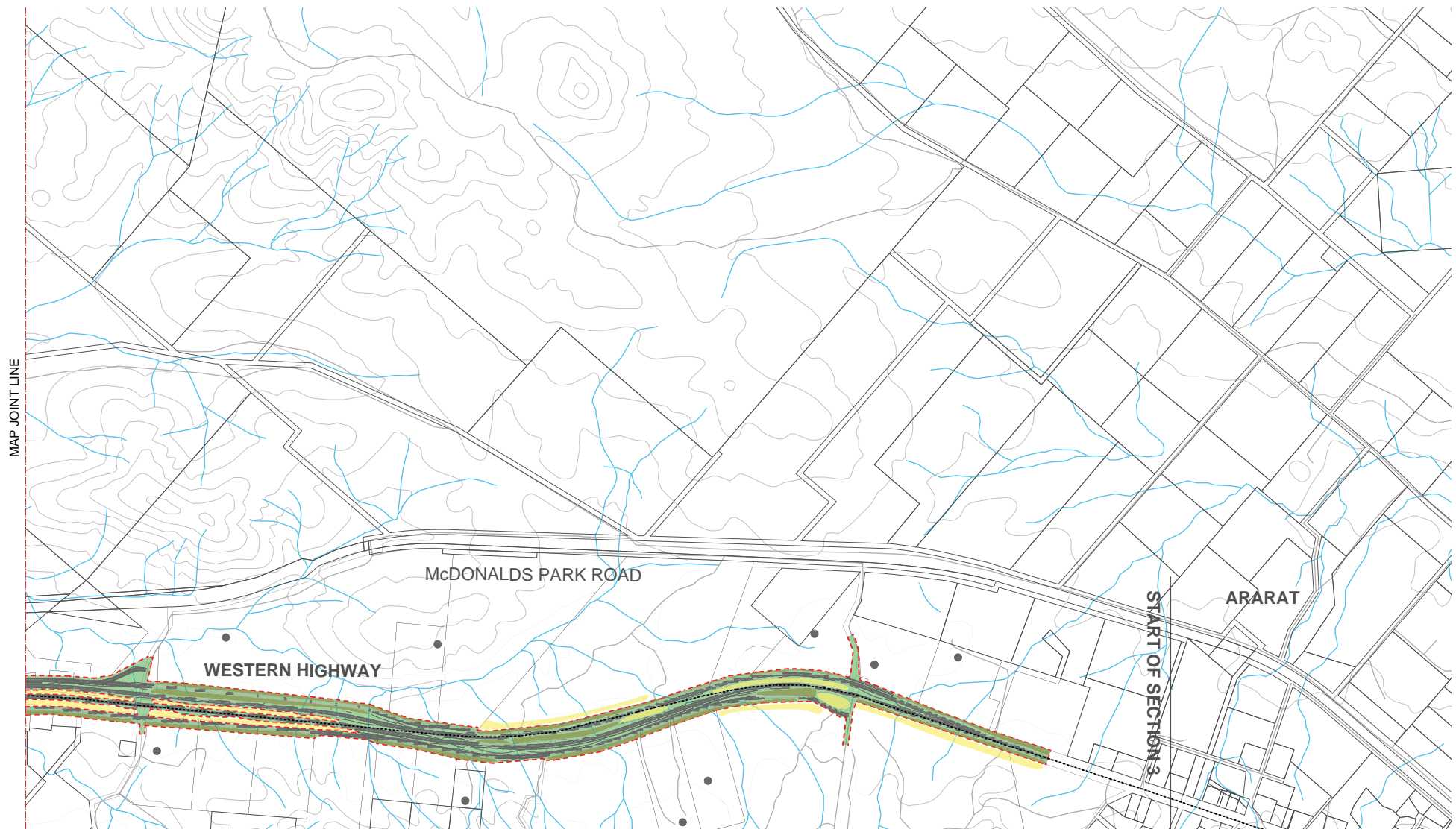
Map 20: Mitigation Concept Plans – Sheet 1 of 5

Map 21: Mitigation Concept Plans – Sheet 2 of 5

Map 22: Mitigation Concept Plans – Sheet 3 of 5

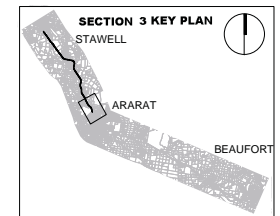
Map 23: Mitigation Concept Plans – Sheet 4 of 5

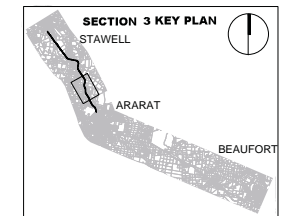
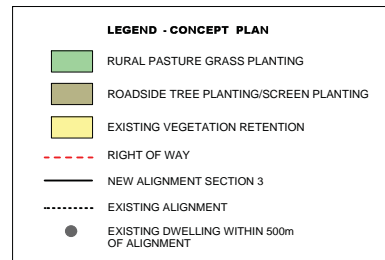
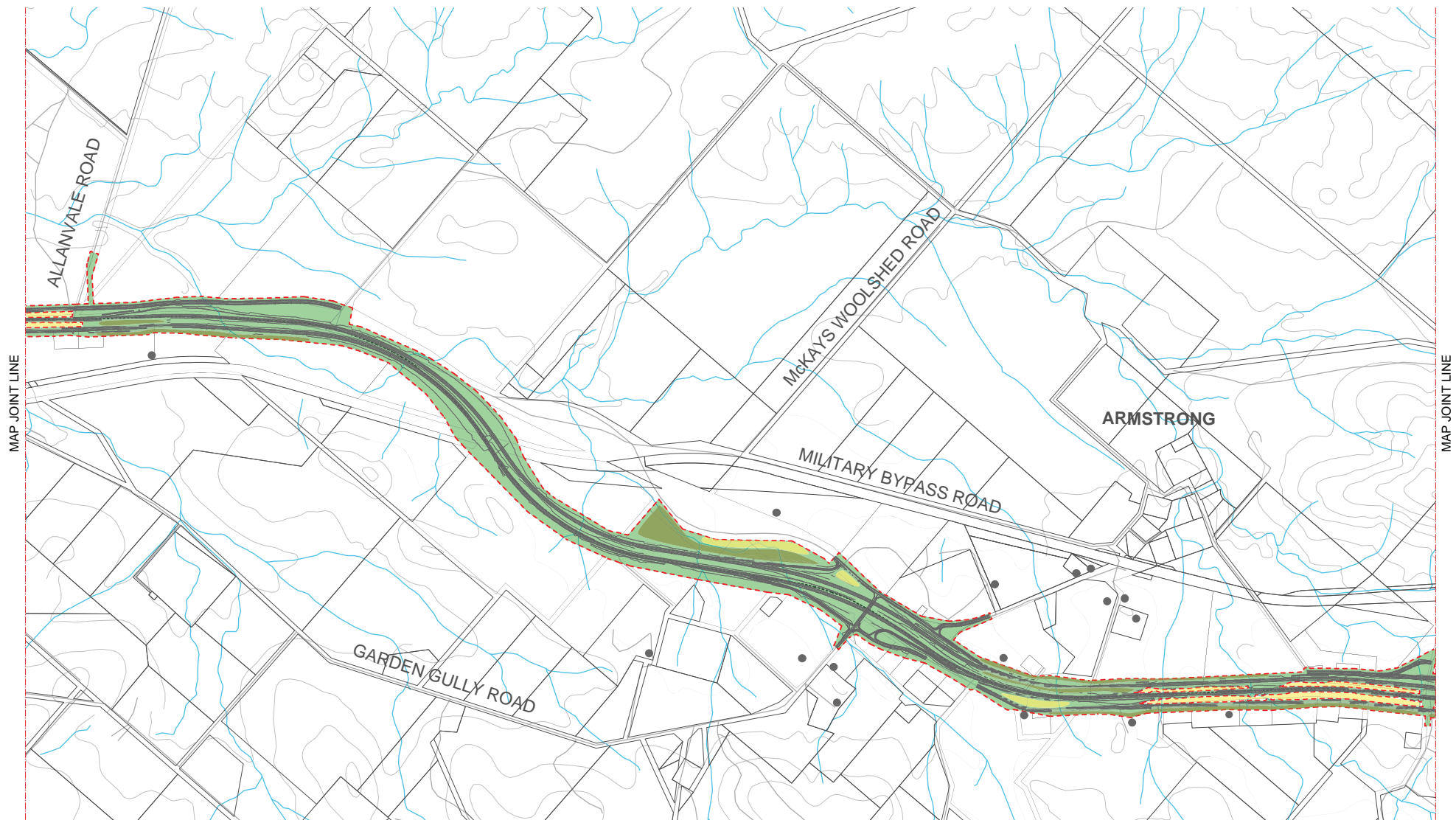
Map 24: Mitigation Concept Plans – Sheet 5 of 5

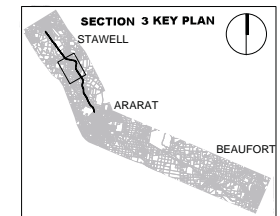
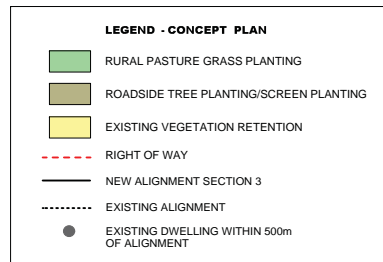
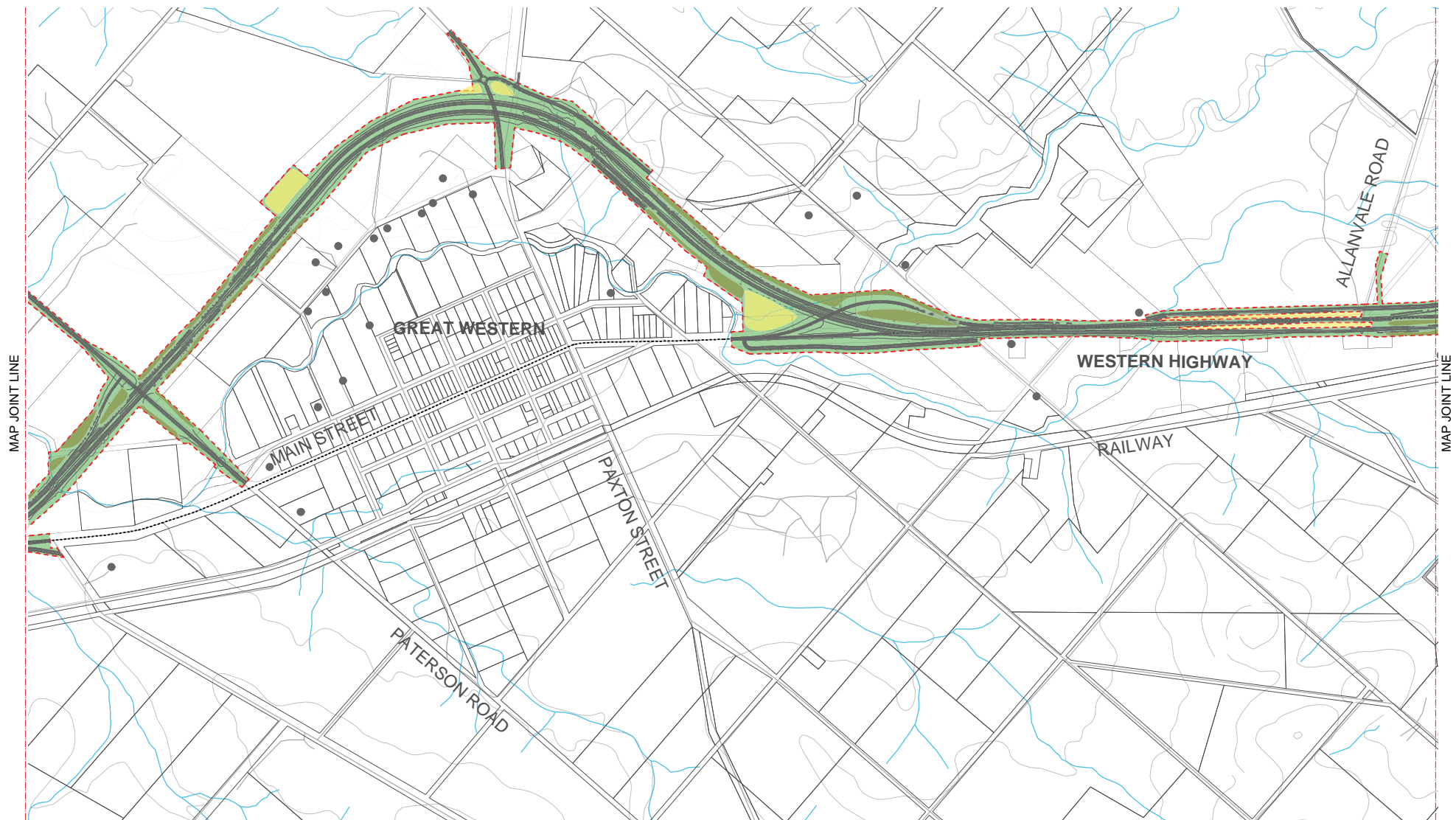


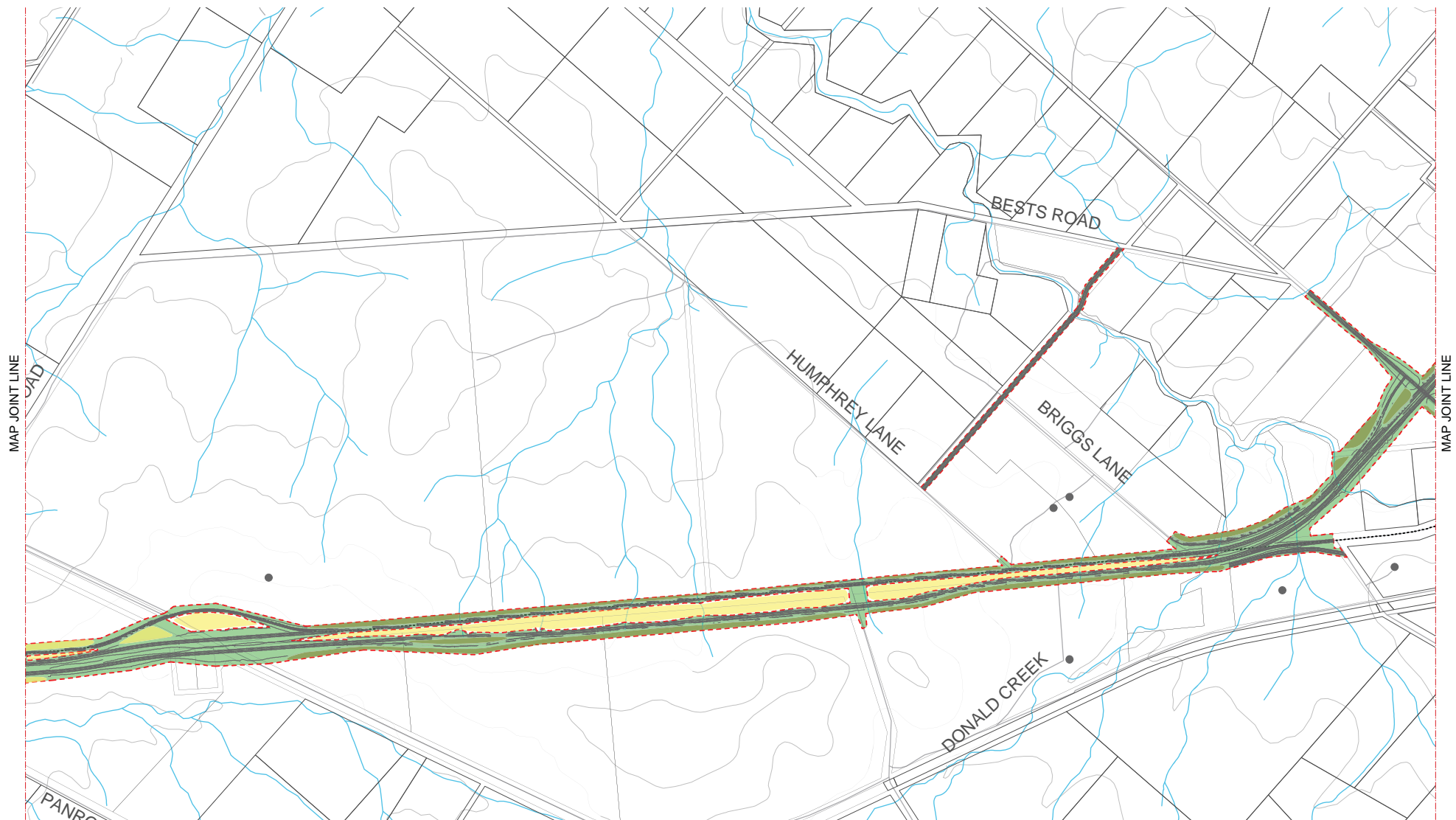
LEGEND - CONCEPT PLAN

- RURAL PASTURE GRASS PLANTING
- ROADSIDE TREE PLANTING/SCREEN PLANTING
- EXISTING VEGETATION RETENTION
- RIGHT OF WAY
- NEW ALIGNMENT SECTION 3
- EXISTING ALIGNMENT
- EXISTING DWELLING WITHIN 500m OF ALIGNMENT



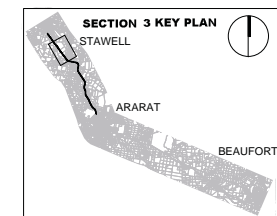


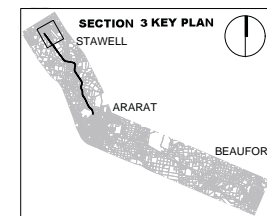
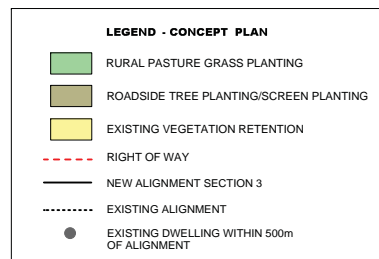
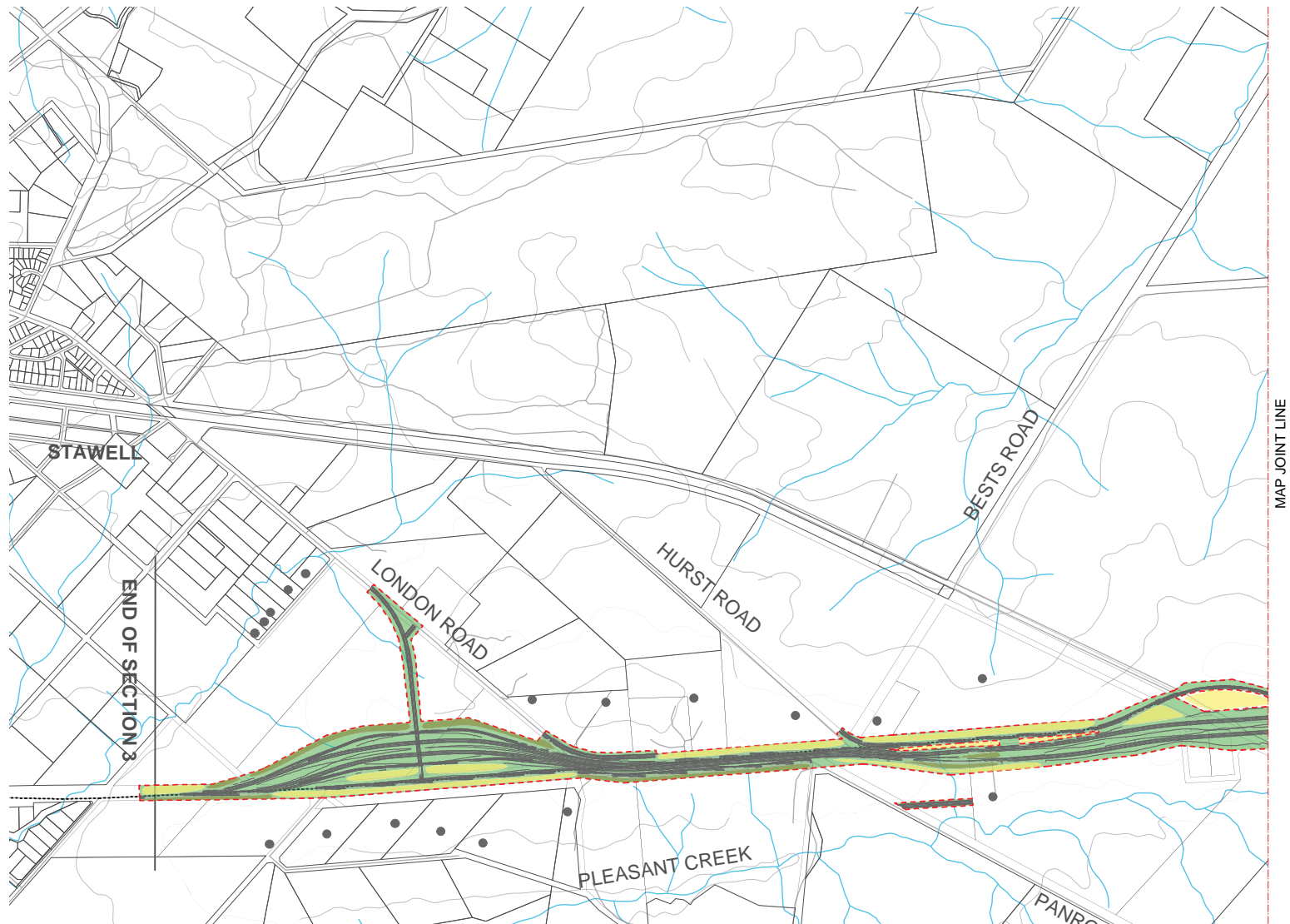




LEGEND - CONCEPT PLAN

- RURAL PASTURE GRASS PLANTING
- ROADSIDE TREE PLANTING/SCREEN PLANTING
- EXISTING VEGETATION RETENTION
- RIGHT OF WAY
- NEW ALIGNMENT SECTION 3
- EXISTING ALIGNMENT
- EXISTING DWELLING WITHIN 500m OF ALIGNMENT





Prepared for GHD by



ADELAIDE MELBOURNE SYDNEY SHANGHAI
LANDSCAPE ARCHITECTURE URBAN DESIGN DIGITAL MEDIA

ASPECT Studios Pty Ltd
ABN 11 120 219 561
Level 1/30-32 Easey St
Collingwood, VIC, 3066
Tel (03) 9417 6844
Fax (03) 9417 6855
www.aspect.net.au
Job Number: 29012

© ASPECT Studios

This document is and shall remain the property of ASPECT Studios. The document may only be used for the purpose for which it was commissioned and in accordance with the Terms of Engagement for the commission. Unauthorised use of this document in any form whatsoever is prohibited.

Document Status

Rev No.	Author	Reviewer		Approved for Issue		
		Name	Signature	Name	Signature	Date
1	Draft Existing Conditions Analysis	Nelson Gomes	Nelson Gomes	Kirsten Bauer	Kirsten Bauer	30/06/11
2	Draft Existing Conditions Analysis	Nelson Gomes	Nelson Gomes	Kirsten Bauer	Kirsten Bauer	13/07/11
3	Draft Existing Conditions Analysis	Nelson Gomes	Nelson Gomes	Kirsten Bauer	Kirsten Bauer	4/08/11
4	Draft Landscape and Visual Impact Assessment	Sophie Barnsley	Sophie Barnsley	Kirsten Bauer	Kirsten Bauer	31/01/12
5	Draft Landscape and Visual Impact Assessment	Nelson Gomes	Nelson Gomes	Kirsten Bauer	Kirsten Bauer	22/08/12
6	Draft Landscape and Visual Impact Assessment	Nelson Gomes	Nelson Gomes	Kirsten Bauer	Kirsten Bauer	13/09/12
7	Final Landscape and Visual Impact Assessment	Nelson Gomes	Nelson Gomes	Kirsten Bauer	Kirsten Bauer	01/11/12