

# ACTIONS AND ISSUES REGISTER



#	DATE RAISED	ACTION / ISSUE	OWNER	STATUS	DATE CLOSED
S24-4	2 February 2021	RNA to provide an update on the construction end dates, and timeline for when access to the South Yarra Siding Reserve, Arthur Street and Lovers Walk will be reinstated.	RNA / CYP	<b>CLOSED</b> – RNA advised it is expected to open in Q3 2022.	17 May 2022
S26-1	8 June 2021	RNA to present an update on the outcome of the investigations into the 'rail squeal' track noise which began around the start of December 2020.	RNA	<b>CLOSED</b>	17 May 2022
S29-1	12 October 2021	RNA (with MTM) to advise whether the reduction in vegetation on the Sandringham and Frankston/Dandenong lines due to replacement of batters with vertical concrete walls has had any impact on rail corridor noise reaching residences. RNA to also investigate the feasibility of sound dampening along the rail corridor, and present on noise and frequency data (including baseline data from before works commenced) at a future CRG.	RNA	<b>CLOSED.</b>	17 May 2022
S31-1	22 February 2022	CYP to provide a project wide update at the next CRG meeting.	CYP	<b>CLOSED</b>	5 April 2022
S32-1	5 April 2022	RNA to arrange a meeting with CRG members to discuss the landscaping plans between the park and the residential fence line.	RNA	<b>CLOSED</b>	5 April 2022
S33-1	17 May 2022	RNA to present a visual graph showing the pattern of noise changes relating to the rail squeal. RNA also to present data on pre-project noise levels compared to current noise levels.	RNA	OPEN – RNA to provide an update at the next CRG Meeting.	
S33-2	17 May 2022	RNA to advise if anti-graffiti treatment is an option for Arthur St fence.	RNA	OPEN – RNA to provide an update at the next CRG Meeting.	

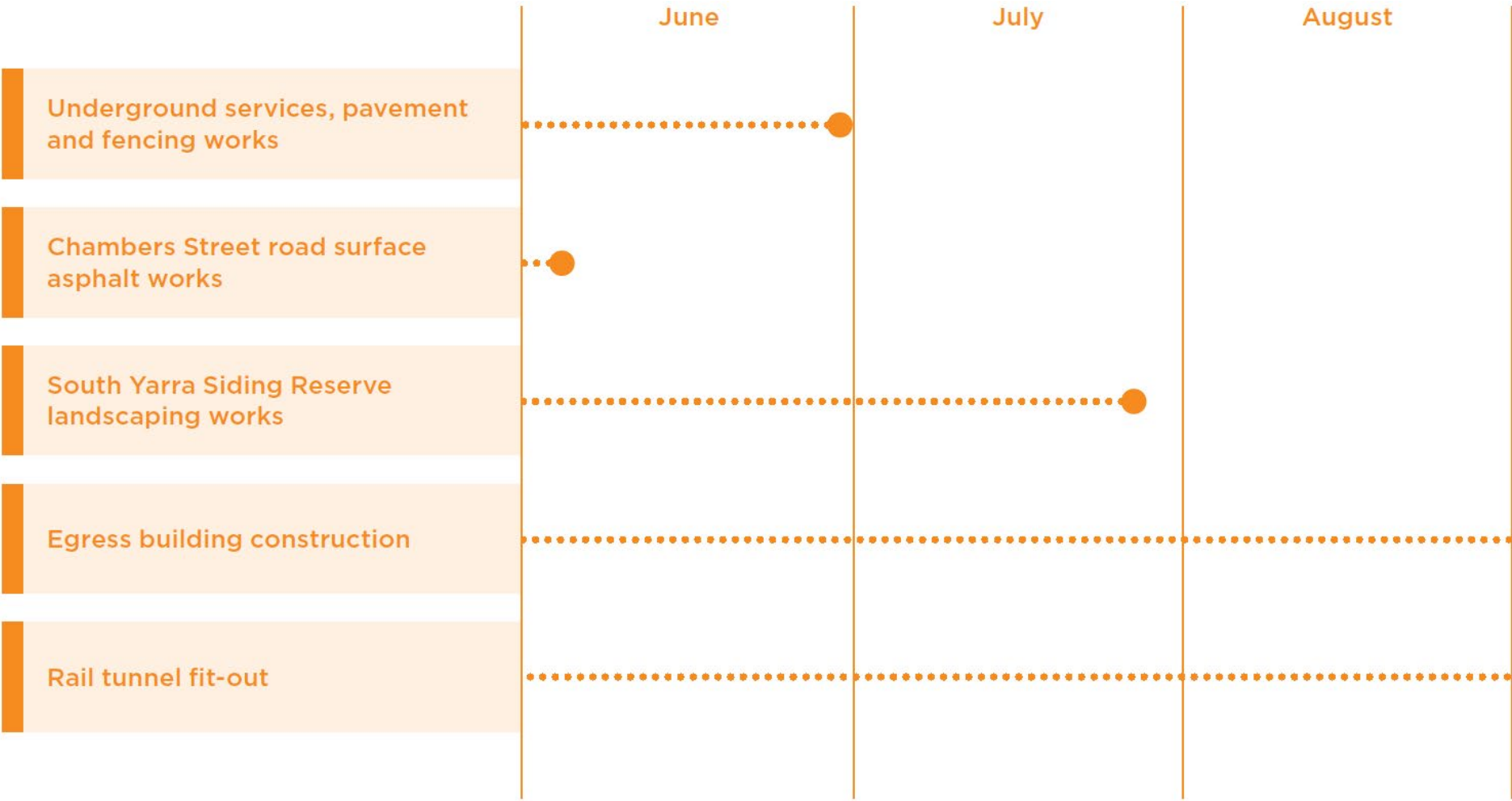


# SOUTH YARRA (EASTERN PORTAL) PRECINCT

## COMMUNITY REFERENCE GROUP

21 June 2022

# Construction lookahead



# CONSTRUCTION UPDATE - RNA



# CONSTRUCTION PROGRESS

Eastern Portal





# Siding Reserve





# Siding Reserve

Completed pergola





# South Yarra substation



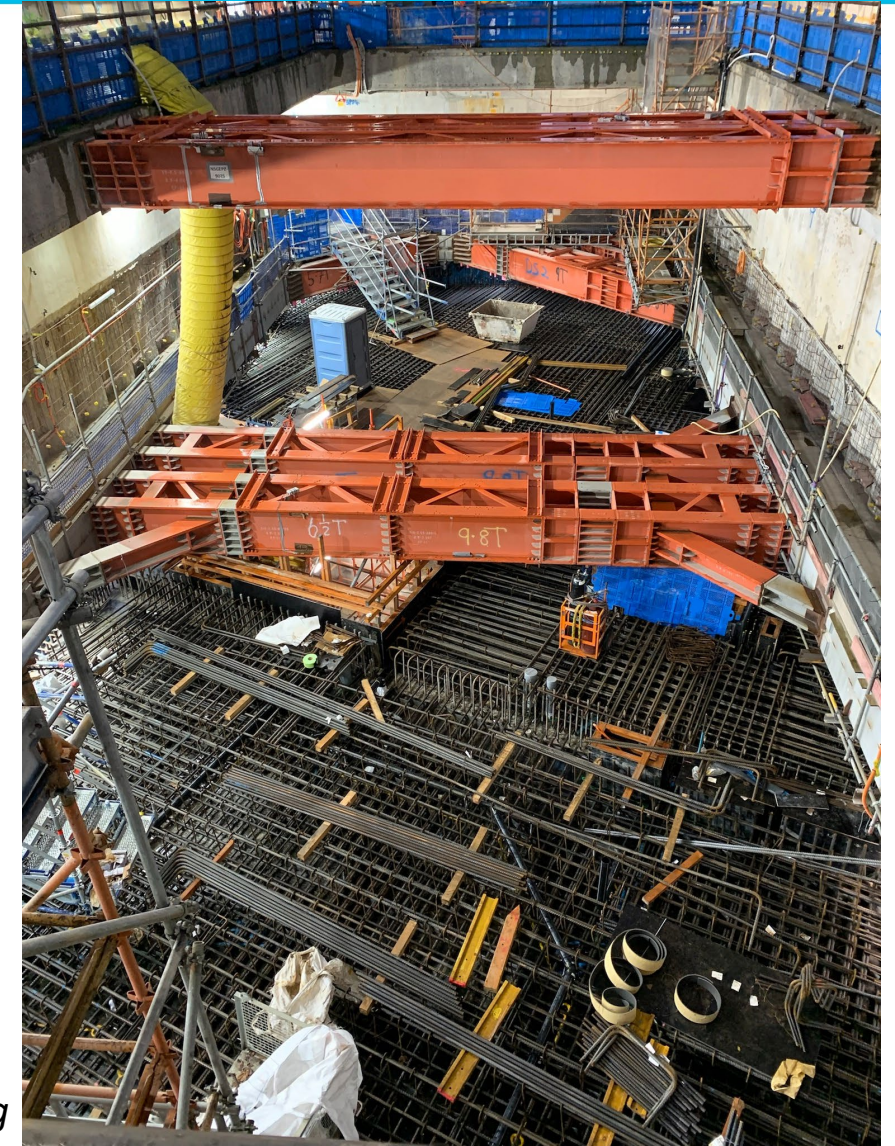


# CONSTRUCTION UPDATE - CYP

# RETRIEVAL SHAFT BUILD OUT AND EGRESS BUILDING CONSTRUCTION



- B1 slab will be poured Tuesday 21 June
- Preparing to remove struts from within the shaft
- Strut removal will enable the lining walls within the shaft to be constructed



*B1 Slab steel fixing*



# RAIL TUNNEL FITOUT WORKS



- Materials for the fitout of the tunnel are being lowered from the William Street Bridge into the decline structure
- Completion of the B1 Slab will significantly clear access to the tunnels for the Rail Tunnel fitout team
- Currently, cable ladders, pipes and brackets are being transported to start the fitout between Anzac Station and Town Hall Station
- In the coming months the first sections of rail will be delivered to site



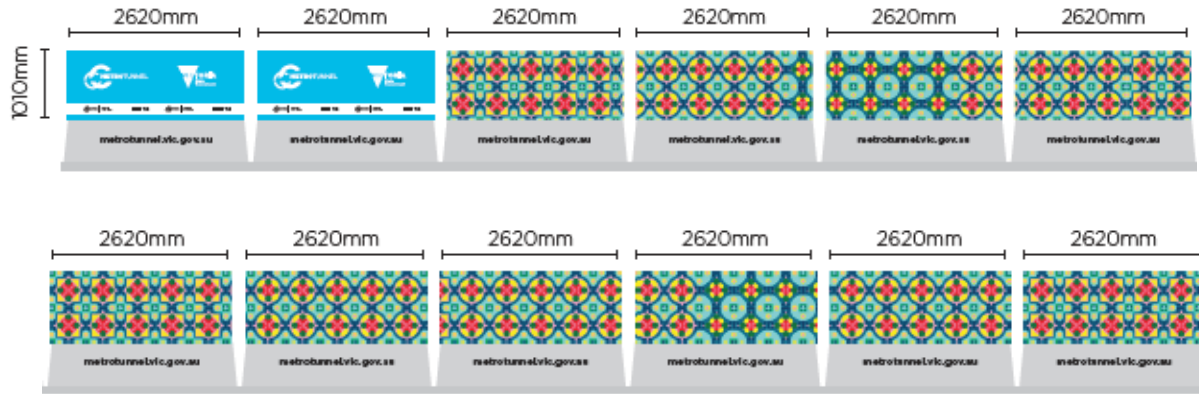
*Multi Service Vehicle (MSV) transports material into the tunnels*

# CREATIVE UPDATE



# CREATIVE UPDATE

## Osborne Street Hoarding



- The next round of creative barrier treatment will be installed in the coming weeks on Osborne Street
- *Metropolitan Tiles - Katy Smits*
- The artwork also features at sites around the CBD



# COMMUNITY & COMMUNICATIONS UPDATE

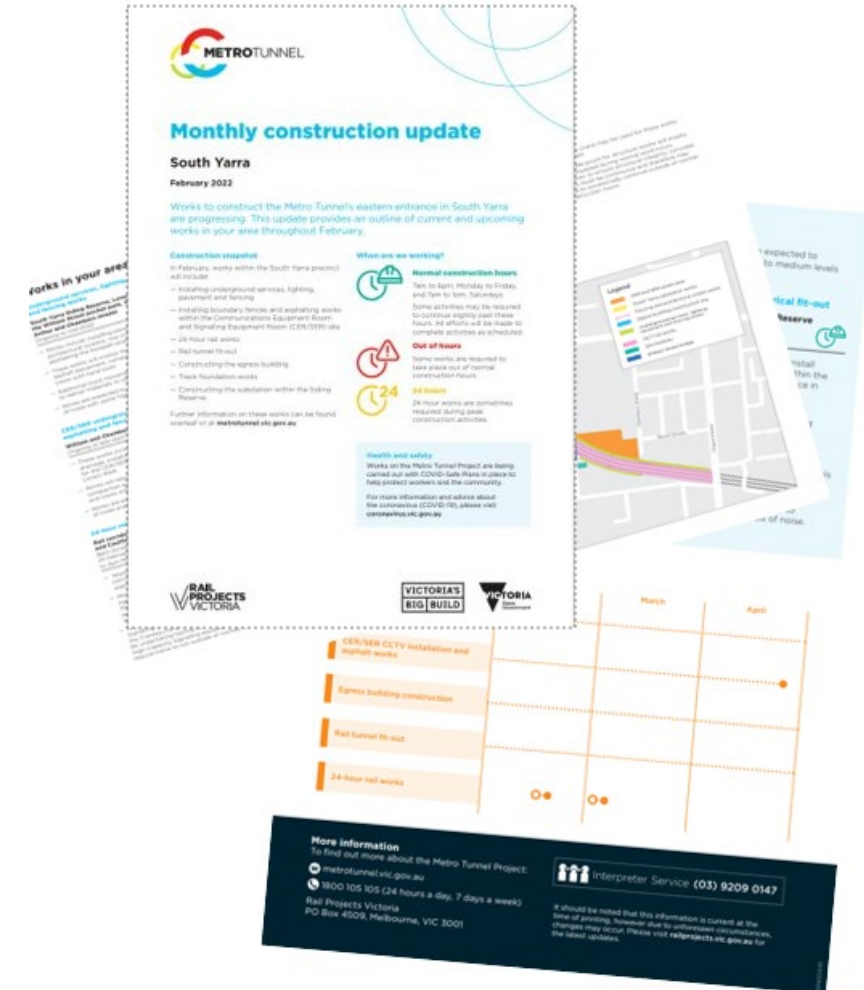


# COMMUNICATIONS

## Recent and upcoming communications



- The June construction update has been distributed to residents and businesses and is available online



# HIGH CAPACITY SIGNALLING TECHNOLOGY TESTING



- **Out of hours**

- Out of hours testing will continue intermittently on the Cranbourne and Pakenham lines throughout 2022 to enable High Capacity Signalling testing
- Testing of the High Capacity Signalling technology is expected to generate low levels of noise.





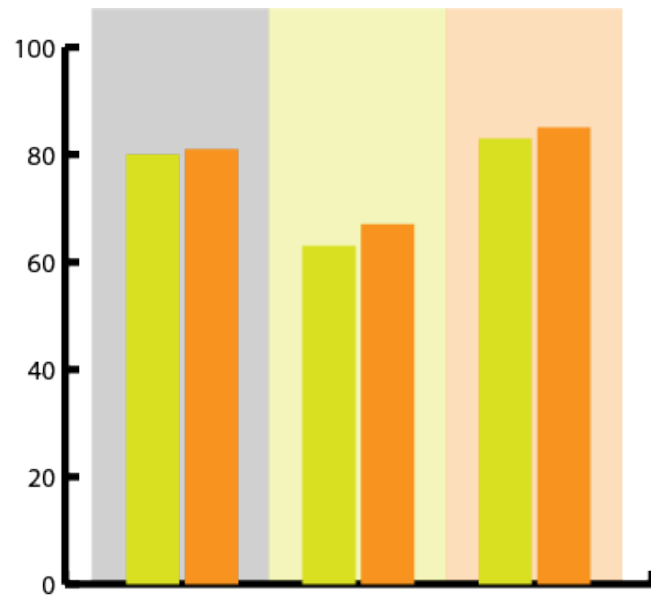
# NOISE LEVELS COMPARISON

# LOCATION OF NOISE MONITORS



# COMPARISON MEASURED NOISE LEVELS BETWEEN 2019 AND 2021

Maximum noise level comparison (dB  $L_{Amax}$ )



Orange bar: Average - Trackside location 2 (Jun-21) Post - 86 dB

Yellow bar: Average - Trackside location 2 (Dec-19) Pre - 83 dB

Orange bar: Average - 8 William Street (Dec-20) Post - 67dB

Yellow bar: Average - 8 William Street (Jan-20) Post - 61dB

Orange bar: Average - 19 William Street (Jan-20) Post - 81dB

Yellow bar: Average - 19 William Street (Dec-19) Pre - 80dB



# PROJECT WIDE UPDATE

- Construction of the new station entrance is progressing with the installation of the precast cladding on the new station entrance
- Future skylights for the station are being installed, with service voids being filled in to allow waterproofing of the station roof
- Works to break back the D-wall around the perimeter of the station are ongoing. This will also enable the waterproofing and final backfill above the station roof



*Pre-cast panel installation at Arden Station*

# Parkville Station



- In the station box, architectural and mechanical, electrical and plumbing fit out are ongoing
- In the station entrances next to the hospital and the Royal Parade underpass, permanent structure works are ongoing





# State Library Station



- Works are progressing at the future State Library Station
- Excavation is continuing at the La Trobe Street site.
- Shaft construction is also continuing at the Franklin, A'Beckett and Little La Trobe sites

- Excavation at Flinders Quarter is due for completion in July and piles have been demolished in Shaft A. This access shaft can now be incorporated into the remainder of the site
- First of two tower cranes will commence installation in mid-June on Swanston Street to work
- Works to reopen the Flinders Street tram stop northern crossing this week
- Lining and structures works continuing within the station cavern, rail tunnels and adits

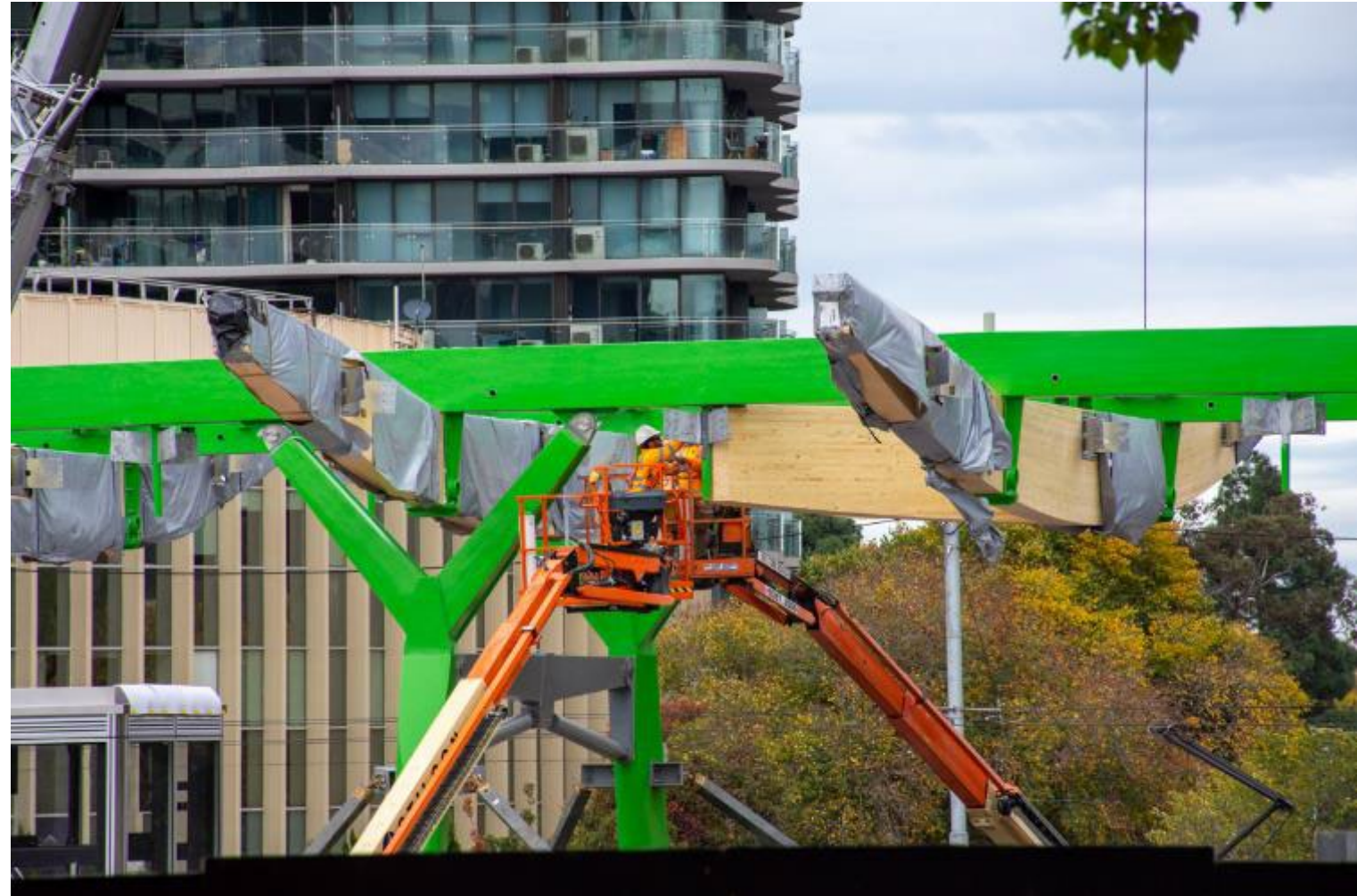




# Anzac Station



- Tram interchange on St Kilda Road is progressing with timber cross sections now being installed
- Platform construction continues underground with precast panels installed from south to north
- Fitout of the back-of-house at concourse level has progressed with high voltage equipment installation commenced to provide power to the future operating trains
- Tunnel ventilation equipment is also being delivered and installed
- St Kilda Road surface is being stripped and backfilled with in preparation for the final realignment of St Kilda Road later this year.



*Tram interchange canopy progress*



**QUESTIONS?**