



The upgraded South Geelong Station

Community update

October 2024



Level crossings gone and upgraded stations open

Two dangerous and congested level crossings at Fyans Street and Surf Coast Highway are gone and upgraded stations featuring improved access for passengers are now open at South Geelong and Marshall, following a 72-day major construction blitz.

More than 1,000 workers worked around the clock to install the final sections of eight kilometres of duplicated track, to improve reliability for services and making it easier for trains to pass each other and reducing unexpected delays.

The upgrades have delivered safer and more accessible stations for the booming communities south of Geelong, and have reduced congestion for the thousands of motorists travelling on Surf Coast Highway and Fyans Street each day.

Crews will continue minor works at the stations including finishing the forecourt and lifts at Marshall Station, and Yarra Street car park entrance and lifts at South Geelong Station, with work on landscaping and walking and cycling paths to continue in Spring.

The South Geelong to Waurin Ponds Duplication is part of the Australian and Victorian governments' more than \$1 billion investment in the staged upgrade of the Geelong Line – Victoria's busiest regional rail line – as part of the Regional Rail Revival program.

Project benefits:



2 level crossings gone for good for 46,000 vehicles travelling along these roads each day



2 upgraded stations with better access



8km of duplicated track to improve reliability



5km of walking and cycling paths connecting South Geelong to Waurin Ponds

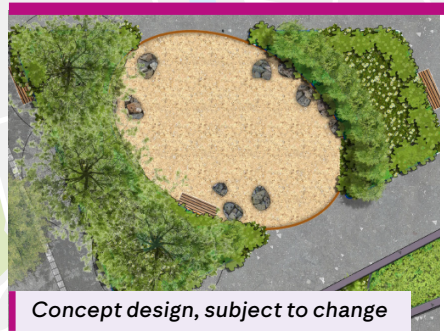


300 new car spaces providing more parking options



For more information visit regionalrailrevival.vic.gov.au/geelong

VICTORIA'S BIG BUILD



Concept design, subject to change



Celebrating culture and history

The South Geelong Station forecourt will integrate Wadawurrung language engraved on landscape rocks set within Indigenous planting, creating a meeting place on Country.

Artwork at South Geelong Station

Artwork on the new accessible pedestrian overpass and ramps by local artist James Price aims to represent the role sport plays within our lives, and links people to build community and connection.



Artwork on the new rail bridge

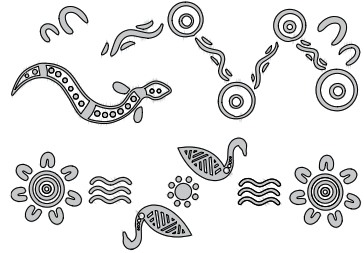
Wadawurrung Traditional Owner and artist Kait James has designed artwork for the new rail bridge at Fyans Street featuring a Silver Wattle leaf to incorporate the theme of native flora and fauna. The fine leaf segments of the Silver Wattle that grows in the region adorns over 200 concrete panels on the approach walls of the rail bridge.



Pocket park

The new open space at Fyans Street will include a tree canopy providing greenery and shade to pedestrians and cyclists travelling along the walking and cycling path. The open space will also feature a drinking fountain, bike repair station, picnic facilities, play areas and boulder seating.

Artwork along walking and cycling path



Artwork by Wadawurrung artists Jurrawaa Stanley and Nikki McKenzie, and Chloe Chatterton features on the walking and cycling paths near the Barwon River. At Gundog Lane, the design reflects the thriving life within the Barwon River and the artist's personal connection through eel fishing as a young man. The Barwon Terrace design is called 'Water and Skys', and features Bunjil, the Wadawurrung Peoples spirit creator, with his two wives beside him.

- Legend**
- +— Train line
 - Walking and cycling path
 - Train stations
 - Pocket park

Your new Fyans Street precinct

Fyans Street rail bridge

Removing the congested level crossing and five-way roundabout will provide quicker journeys and improve safety for more than 17,000 vehicles every day.

Fyans Street has been realigned under the new rail bridge, and extends to the Breakwater Road roundabout.

Key benefits include:

- reducing congestion and improving travel times by eliminating delays caused by boom gates down
- improving safety by separating trains from vehicles and pedestrian crossings

- new green open space, and walking and cycling connections
- no more train horns and level crossing bells ringing.

The community will benefit from new walking and cycling paths with increased lighting to improve safety.

Wayfinding signage will also be included along the new path at key intersections to guide pedestrians and cyclists.

The community's preferences for picnic facilities, play areas and boulder seating will be added to the new open space around the rail bridge later this Spring. We'll also add more new green open space, a water fountain and bike repair station.

Walking and cycling paths

More than 5km of new walking and cycling paths will create a continuous connection between South Geelong and Waurnd Ponds for the first time. This will encourage physical activity within the community and enable safer walking and cycling journeys for the growing communities south of Geelong.

The new paths will follow the rail line and connect Geelong's various trails, including the Barwon River Trail, the Bellarine Rail Trail and the Waurnd Ponds Trail.

We're providing places for the community to rest and relax along the new walking and cycling paths, including bench and boulder seating, picnic tables and pocket park facilities, with work to be completed on the paths in Spring.

The new paths will feature 11 public artworks, creating an art trail between South Geelong and Grovedale.

South Geelong Station upgrade

Passengers are benefiting from improved access, amenity, safety and comfort at the upgraded South Geelong Station. The upgrades include:

- a new station building with an expanded forecourt and feature canopy
- a second platform and new forecourt entrance on Carr Street
- a new accessible pedestrian overpass with ramps, lift and stairs
- Reconfigured car park with 30 extra spaces and increased lighting and CCTV
- colour palette 'native cornflower' blue selected by locals, and featured in the station's architectural elements
- more parkiteers and bike hoops.

The changes to traffic flow on Carr Street will allow pedestrians and cyclists to safely access the station via the new walking and cycling path, which connects to the Bellarine Rail Trail.

New landscaping

We're planting thousands of new trees, low-lying shrubs and grasses around the South Geelong Station precinct.

Native trees will be planted throughout the station carpark and will grow to 8 to 10 metres in height, with large trees planted along the rail line and on the residential side of Carr Street.

We will also plant more than 1,400 new trees throughout the Fyans Street rail bridge precinct, including native trees such as Red Ironbark (*Eucalyptus*

Sideroxylon 'Rosea'), Blackwood (*Acacia Melanoxylon*) and Yellow Box (*Eucalyptus Melliodora*).

New open space beneath and next to the rail bridge will include a mix of mostly Indigenous plants, as well as native and climate-resilient plants and trees to improve biodiversity.

The Wadawurrung Traditional Owners Aboriginal Corporation and City of Greater Geelong have been consulted in the development of the landscaping plans, including climate-resilient planting.



New green open space at Fyans Street. Artist impression, subject to change

Day one after major construction blitz



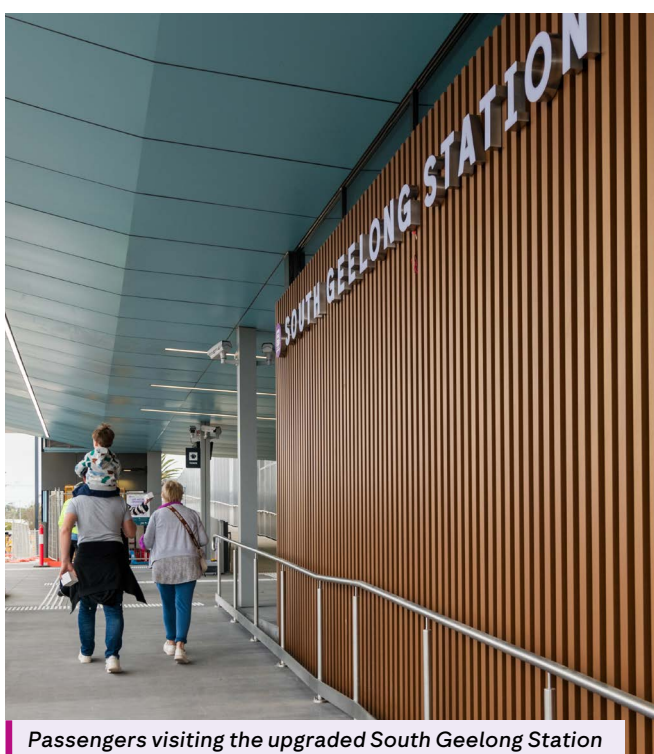
Artwork by Wadawurrung Traditional Owner and artist Kait James



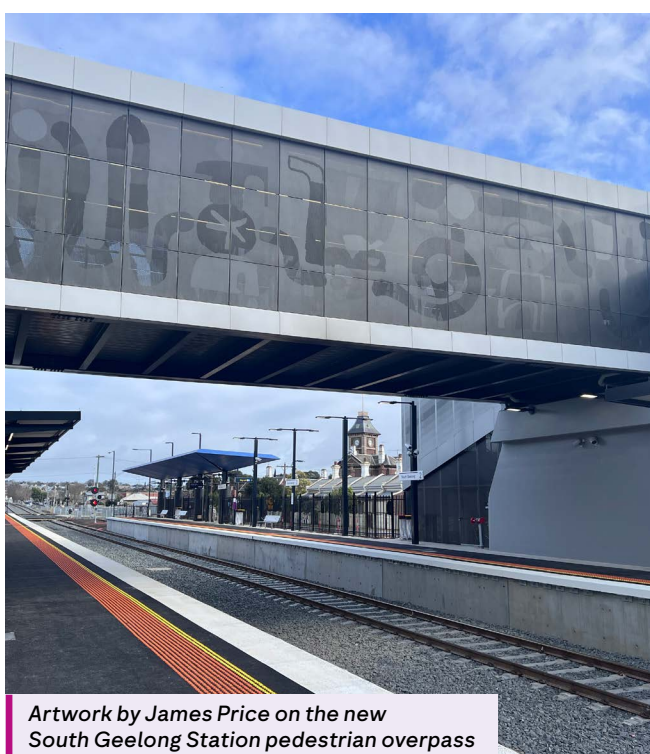
A VLocity train using the new Fyans Street rail bridge



The new Fyans Street rail bridge



Passengers visiting the upgraded South Geelong Station

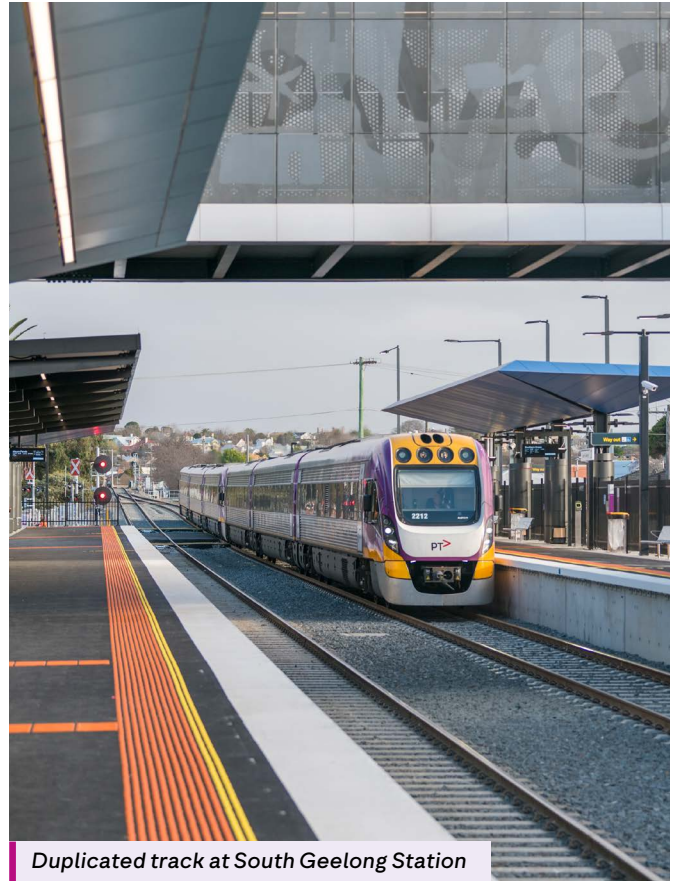


Artwork by James Price on the new South Geelong Station pedestrian overpass

Save the date

Join us on **Saturday 16 November** to celebrate the opening of the new walking and cycling path and the upgrades to South Geelong and Marshall Stations.

For more info, visit:
regionalrailrevival.vic.gov.au/geelong



Duplicated track at South Geelong Station



Passengers enjoying the new South Geelong Station

regionalrailrevival.vic.gov.au
regionalrailrevival@railprojects.vic.gov.au

1800 105 105 (call anytime)



For languages other than English
please call (03) 9209 0147

Please contact us if you would like this information in an accessible format. If you need assistance due to a hearing or speech impairment, visit relayservice.gov.au

