



Hudsons Road, Spotswood

Hudsons Road, Spotswood, September 2025

Level crossing removal community update

Spotswood to be level crossing free by 2028

The Victorian Government is getting on with making the Werribee Line boom gate-free by 2030, paving the way for more trains more often.

We're removing the Hudsons Road level crossing with a rail bridge and building a new Spotswood Station with better facilities for passengers. Elevating the rail line provides better walking and cycling connections to the local neighbourhood and unlocks opportunities to rejuvenate the station precinct including planting more trees and greenery.

We're in the early stages of planning for the project and we'll engage with you throughout project development to shape a design that reflects the community.

Construction will start in 2027 with the level crossing at Hudsons Road gone for good by 2028.

Have your say

Help shape the Spotswood level crossing removal. Find out how to have your say over the page.

Did you know?

As part of the West Gate Tunnel Project, a 24-hour no-truck zone will be introduced on Hudsons Road between Melbourne Road and Booker Street, when the tunnel opens later this year.

Removing the level crossing and taking trucks off Hudsons Road will create a safer environment for locals to walk and cycle through the area.



Why this level crossing needs to go



Around **6,600 vehicles** travel through this crossing each day



Boom gates are down for up to **50 minutes** of the morning peak (7am to 9am)



Up to **50 trains** during the morning peak



More services planned on the Werribee Line after the Metro Tunnel opens later this year, meaning more boom gate down time



Sign up for updates
levelcrossings.vic.gov.au



Your new Spotswood Station

We'll build a new elevated station as part of the Hudsons Road level crossing removal project.

Why the rail bridge is the best solution for Spotswood

Each level crossing is unique and needs a design that considers environmental, community and technical factors. A design that works well for one area may not necessarily suit another.

Designs for level crossing removals are assessed and developed by teams of technical experts including engineers and construction specialists.

Throughout initial design development for Hudson Road level crossing removal project we looked at a range of road and rail solutions.

The new station will have better facilities and safety features including lighting and CCTV plus lifts and stairs, improving access for all.

For Spotswood, a rail bridge provides:



Improved Connections

Elevating the rail will also create better connections across the rail line between Hope and Hall Streets. Travel times will be more reliable and access will be easier and safer for pedestrians and cyclists to move through the area, including to the local shops.



Rejuvenated station precinct

An elevated station provides the opportunity to enhance urban design through creative station design, as well as more trees and greenery and new open space created by raising the rail line.



Reduced noise

Existing rail noise will be reduced by getting rid of the boom gate bells, installing new rail tracks and sleepers and removing tyre and vehicle noise, as drivers will no longer have to stop at and cross the tracks at the level crossing.



Reduced local impacts

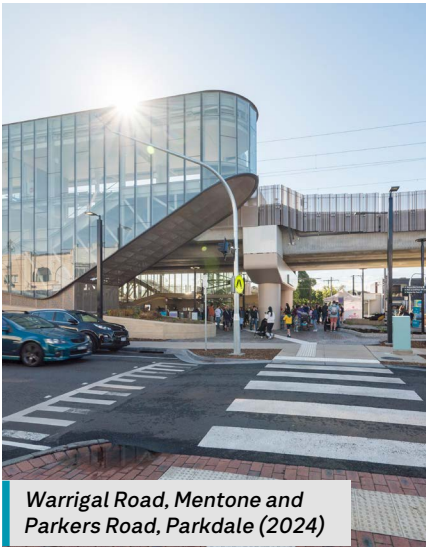
Elevating rail uses the available space within the existing rail corridor, minimising impacts to surrounding homes and businesses, as well as impacts to underground services.

Examples of elevated rail solutions

Each one is different, as every area is unique.



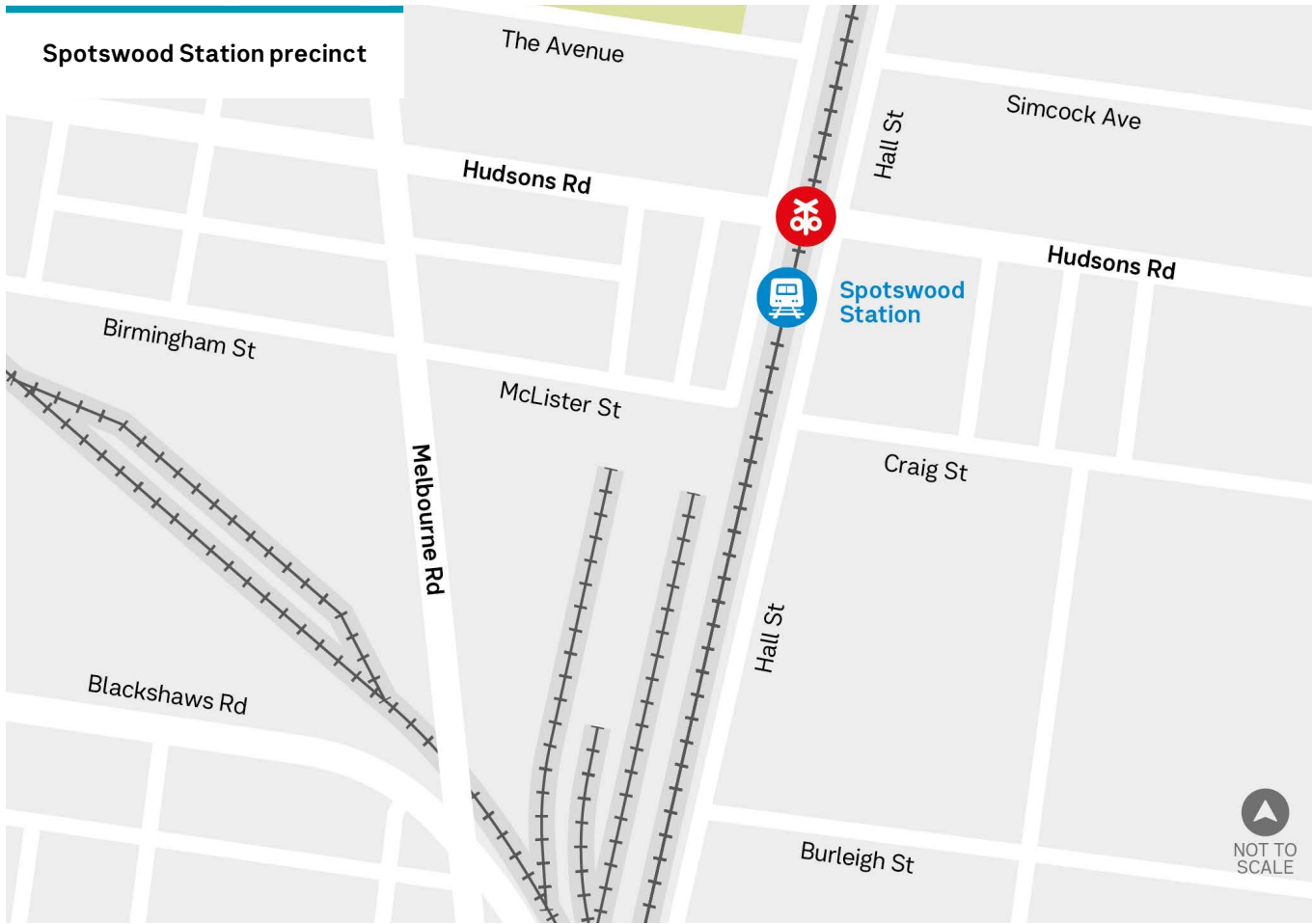
Bell Street, Preston (2022)



Warrigal Road, Mentone and Parkers Road, Parkdale (2024)



Murray Road, Preston (2022)



How we will engage with the community



Community consultation

We start by talking to the community about how you move around the area, how often you use the station and how you would like to use the new open space we will create by raising the rail line.

Planning approvals

We will seek community feedback on a range of planning matters.

Concept designs

We'll release the project design and ask for your feedback. You'll have the opportunity to help refine key elements of the design.



Final designs

We'll show you the final project designs and let you know what to expect during construction.

Construction

Throughout construction, we work with residents, local traders and key stakeholders including Hobsons Bay City Council and local community groups to help manage any disruption caused by our works.

What do you value about the local area?

Is it the proximity to public transport, or local flora and fauna? Tell us how this should be reflected in the project design.

How do you move about the local area?

Do you walk, cycle or drive?

Local traders – we want to hear from you.

We're committed to working with local businesses during the removal of this level crossing. Tell us about your business in the local area.



Hudsons Road, Spotswood

Next steps for Spotswood

As we develop our designs, we want to hear what locals love about Spotswood as well as your ideas for the new station precinct and open space.

Your feedback will help shape the early concept designs, alongside technical and engineering requirements.



We'll be holding community information sessions over the next month. Register to attend at levelcrossings.vic.gov.au/spotswood-info-sessions

Stay up to date

The best way to stay up to date with the project is to:



Read more about the project at levelcrossings.vic.gov.au/spotswood



Have your say at engage.vic.gov.au/lxrp-hudsons-road



Subscribe to email updates at levelcrossings.vic.gov.au/subscribe and under the Werribee Line select **Spotswood**



Call us on **1800 105 105** or email contact@levelcrossings.vic.gov.au. For languages other than English call **9209 0147**



Follow us on social media or send us a private message on our Facebook page

Project timeline



Late 2022

- Project announced



Mid-2023

- Community webinar



Mid-2025

- Community consultation
- Early planning and investigation



2026

- Planning consultation
- Concept design released with further consultation
- Early works to prepare the site



2027

- Final designs released
- Major construction



2028

- Boom gates removed
- New Spotswood Station opens

** Timeline subject to change.*

Have your say








Scan the QR code or visit engage.vic.gov.au/lxrp-hudsons-road to take the survey. Submissions close **11.59pm Sunday 5 October.**

levelcrossings.vic.gov.au

contact@levelcrossings.vic.gov.au



For languages other than English, please call 9209 0147.

1800 105 105 (call anytime)     

Please contact us if you would like this information in an accessible format. If you need assistance due to a hearing or speech impairment, visit relayservice.gov.au

