



## DOMAIN COMMUNITY REFERENCE GROUP

### Meeting #18

Wednesday 16 October, Seasons Botanic Gardens

# ST KILDA ROAD REALIGNMENT UPDATE

# ST KILDA ROAD REALIGNMENT OVERVIEW



# TIME-LAPSE

SEPTEMBER 1 TO OCTOBER 15





# NORTH VIEW 7AM MONDAY 14 OCTOBER



















# MAP OF CURRENT WORK ZONES



## Legend

-  Work site
-  Cyclist and traffic shared zone
-  Pedestrian access
-  Cyclist access
-  Cyclists dismount
-  Traffic access

# WORKS LOOKAHEAD

Works	October														
	13	14	15	16	17	18	19	20	21	22	23	24	25	26	27
Decommissioning of tram wires	☾														
Traffic barrier work & line marking	☀️	☾							☾					☾	☀️
Breakout	☀️	☾	☀️	☀️	☀️				☀️	☀️	☀️	☀️			
Removal of materials from site	☀️	☾	☾												
Drainage works		☾	☾	☀️											
Earthworks		☾	☾	☾	☾										
Asphalting			☾	☀️	☀️	☀️	☀️	☀️	☀️						
Tram track works			☾	☾	☾	☾									
Tram pole dressing									☀️	☀️	☀️	☀️	☀️	☀️	
Cable pulling									☾					☾	
Minor finishing works										☾	☾	☾			
Piling platform												☀️	☀️	☀️	
Test trams														☀️	
Trams resume															☀️

☀️ Day works    Night works: ☾ Low noise    ☾ Medium noise    ☾ High noise

*Indicative only, times and dates subject to change*

# ENVIRONMENT UPDATE



# NOISE SO FAR – SUNDAY 13 OCTOBER

Building	Unmitigated predicted noise level dB	Night-time measured dB
The Domain	<65	64
The Botanica	<65	64
Hallmark Apartments	<65	56
Domain Hill	<65	62

# NOISE SO FAR – MONDAY 14 OCTOBER

Building	Unmitigated predicted noise level dB	Night-time measured dB
The Domain	>75	79
The Botanica	>75	79
Hallmark Apartments	>75	73
Domain Hill	>75	75

# NOISE SO FAR – TUESDAY 15 OCTOBER

Building	Unmitigated predicted noise level dB	Night-time measured dB
The Domain	>75	70
The Botanica	>75	70
Hallmark Apartments	>75	66
Domain Hill	>75	66

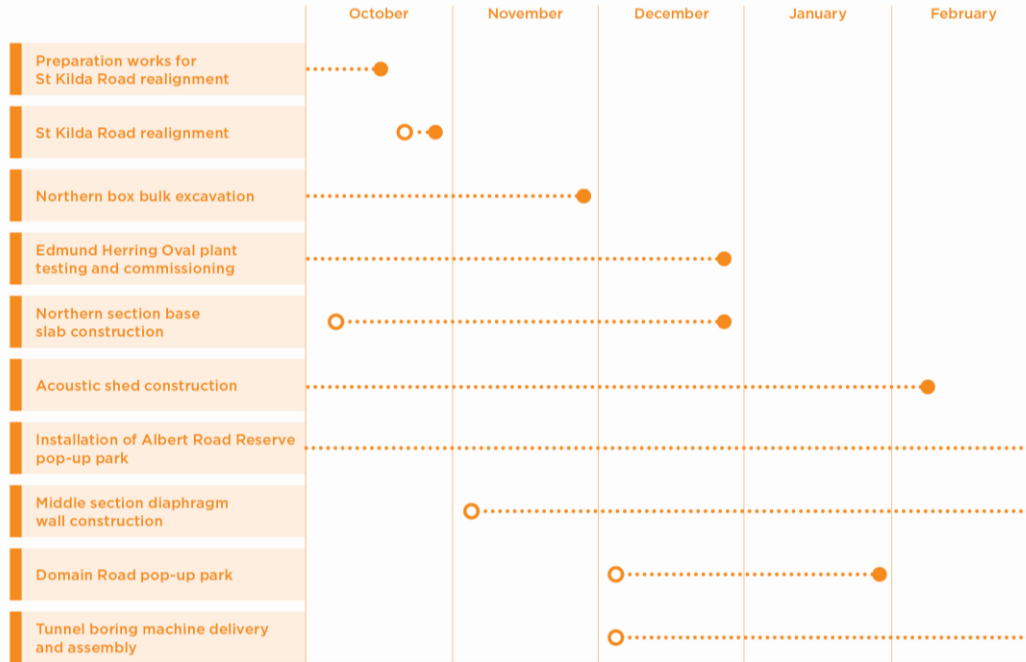


# WORKS UPDATE



# ANZAC STATION PROGRAM

## LOOK AHEAD FOR 2019/2020



Indicative only. Dates subject to change

Melbourne cup site shut down

2-6 November 2019

# CURRENT AND UPCOMING WORKS NORTHERN SECTION

- Excavation through the voids
- Base slab construction
- 24 hour works under the roof slab





# STRUTTING, LOOKING SOUTH



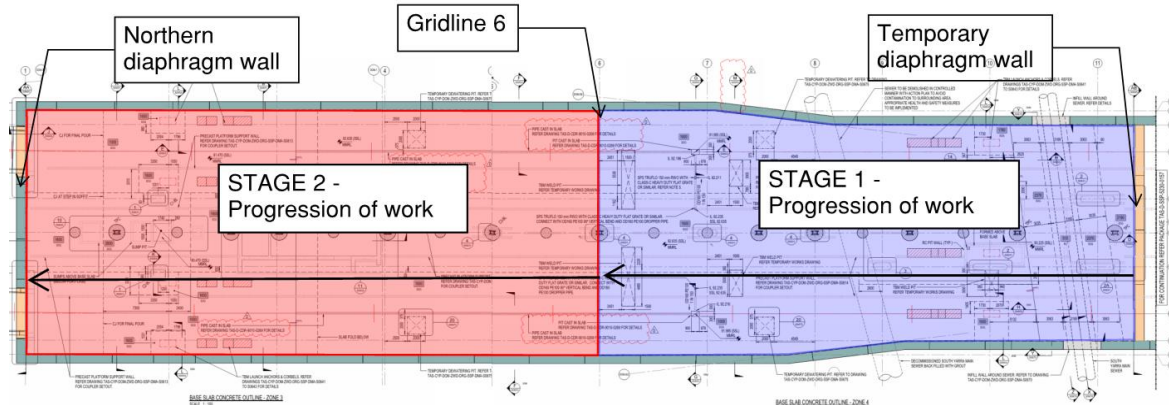


# UPCOMING WORKS

# BASE SLAB CONSTRUCTION

# BASE SLAB CONSTRUCTION

- Start at southern end and move north in seven sections over two stages
- Similar methodology as roof slab
- First stage of base slab construction will require protection of the South Yarra Main Sewer
- 24 hour works under the roof slab



Northern section of the station box layout

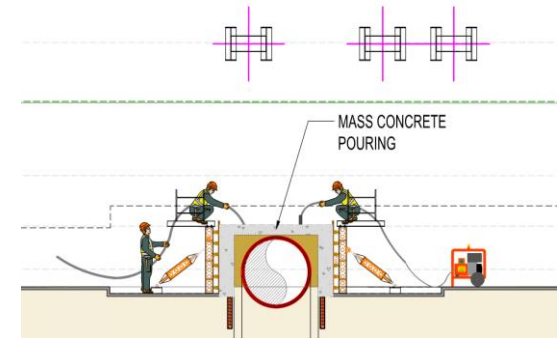


Illustration of sewer protection works

# UNCOVERING THE SEWERS





# SEWER PROTECTION WORKS

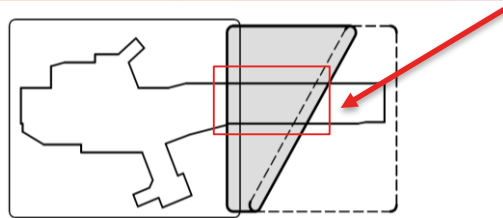
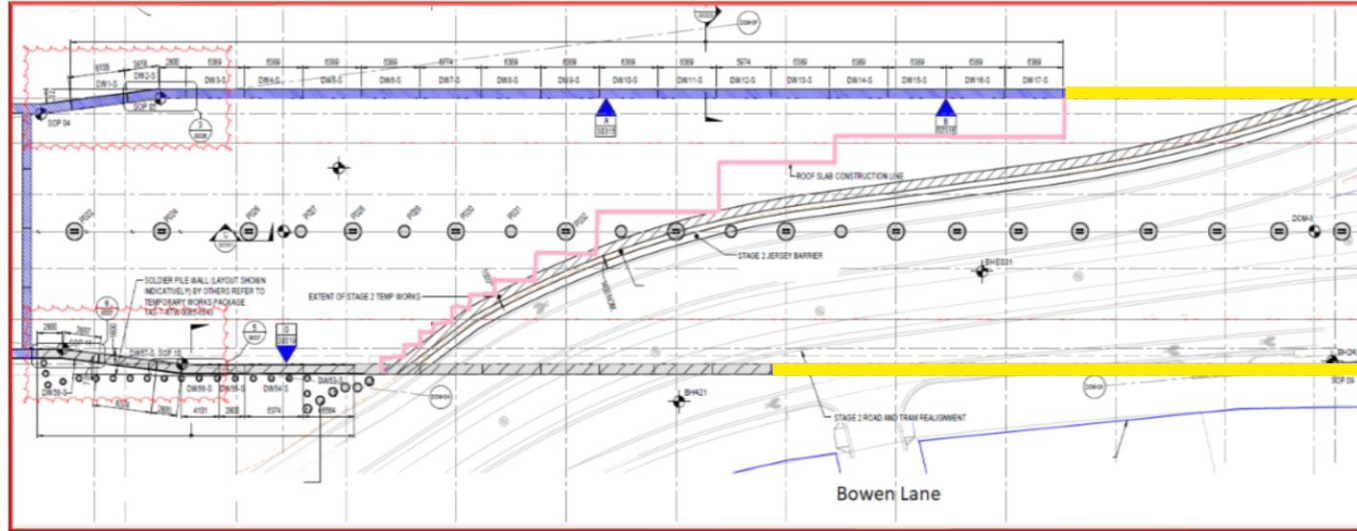






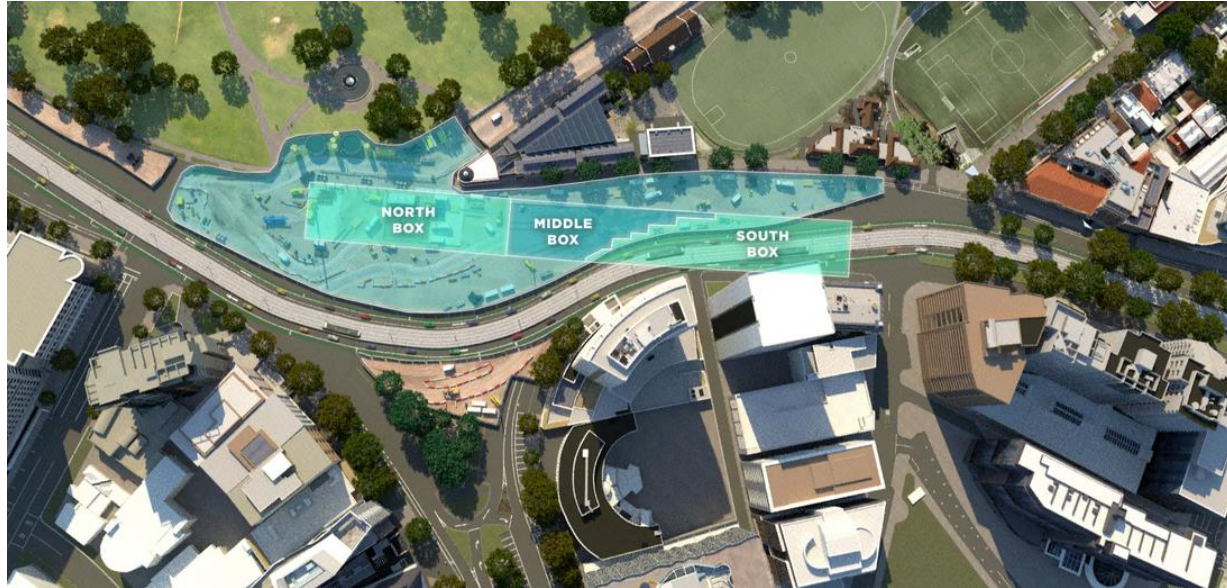
# MIDDLE BOX

# DIAPHRAGM WALL AND PILING



Works in the southern section of the station box

# SITE LAYOUT



Artists impression



After realignment map  
Indicative only

# UPCOMING WORKS

# TUNNEL BORING MACHINE DELIVERY

- Deliveries must be made overnight to minimise impacts on traffic and trams
- 40 oversized deliveries starting from between late November and May
- Working with Yarra Trams and VicRoads on best route options as tram wires need to be lifted to allow for some pieces to be delivered.

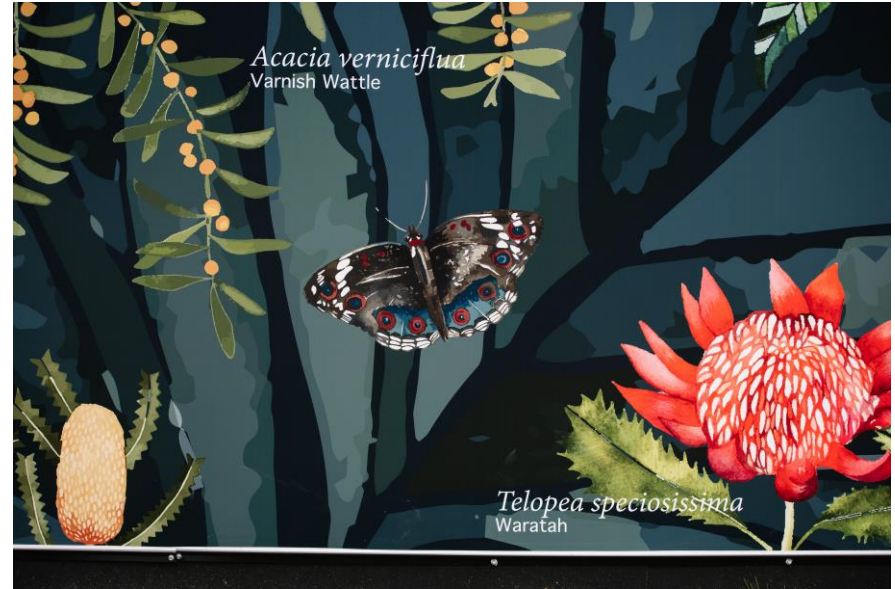


*Tunnel boring machine cutterhead delivery  
western precinct*

# CREATIVE PROGRAM UPDATE



# METRO TUNNEL CREATIVE PROGRAM ARTWORK



**Watercolour herbarium**  
**By Caitlin Klooger, 2019**

# DOMAIN ROAD POP-UP PARK UPDATE

- Fabrication of the Domain Road Pop-up park currently occurring offsite.
- Structure will be transported in a series of modules and installed on site.
- Planting consistent with Royal Botanic Garden's *'Landscape Succession Strategy'*.
- Images provide reference to the look and feel of planting for the Domain Road Pop-Up Park.



# METRO TUNNEL CREATIVE PROGRAM

## POP-UP PARK PROGRESS

### **Domain Road Pop-up Park**

- Installation for later in the year.
- Built offsite to minimise disruption with planting to occur onsite.

### **Albert Road Reserve Pop-up Park**

- Ongoing work occurring offsite
- Installation anticipated for early 2020.





**THANK YOU**