



West Community Liaison Group

West Zone Update
5 September 2018



INTRODUCTION

JIM WILLIAMSON
CHAIR

Agenda

Time	Item	Topic
5:30pm	1	Welcome, introductions and apologies and actions from previous meeting
5:40pm	2	Project Update
6:45pm	3	Tea break
7.00pm	4	Member feedback and questions
7.25pm	5	Action summary and close
7.30pm	6	Photograph and Bios for website

UPDATE

ANTHONY HAVERS

WESTERN DISTRIBUTOR AUTHORITY

- Indigenous trainees ready for work
- Precast facility shopfront opens in Benalla
- Premier at the Information Centre
- Truck ban technology
- Thousands of local business opportunities



Truck Monitoring

- Latest traffic camera technology installed on Hyde Street
- Identifies trucks that are not eligible to use roads subject to truck bans
- Cameras and sensors that identifies vehicle size
- Increase in surveillance and monitoring of traffic using Hyde Street
- Reporting to VicRoads (Transport Safety Services)
- Speeding or safety issues reported to Victoria Police.



Community Involvement and Participation Plan



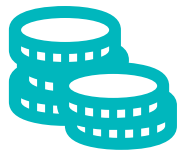
Maximise the legacy of the West Gate Tunnel Project for the community



Objective is to increase community connectedness and cohesiveness



Focuses on the period during construction



Funds community led initiatives through a grants and partnership program

Initiatives following the EES process

- Inner West Air Quality Reference Group
- Moonee Ponds Creek Master Plan
- Corridor Study Group (transport)



Independent Reviewer & Environmental Auditor

- Arcadis Australia Pacific Pty Ltd appointed via tender in June 2017 with WSP and APP

Some environmental functions:

- Environmental Management Strategy audited every 6 months
- Construction Environmental Management Plan compliance audited every 3 months
- Worksite Environmental Management Plan compliance audited every month
- Operations Environmental Management Plan implemented upon completion of construction.



TRAFFIC MANAGEMENT

ELI GOODHARDT

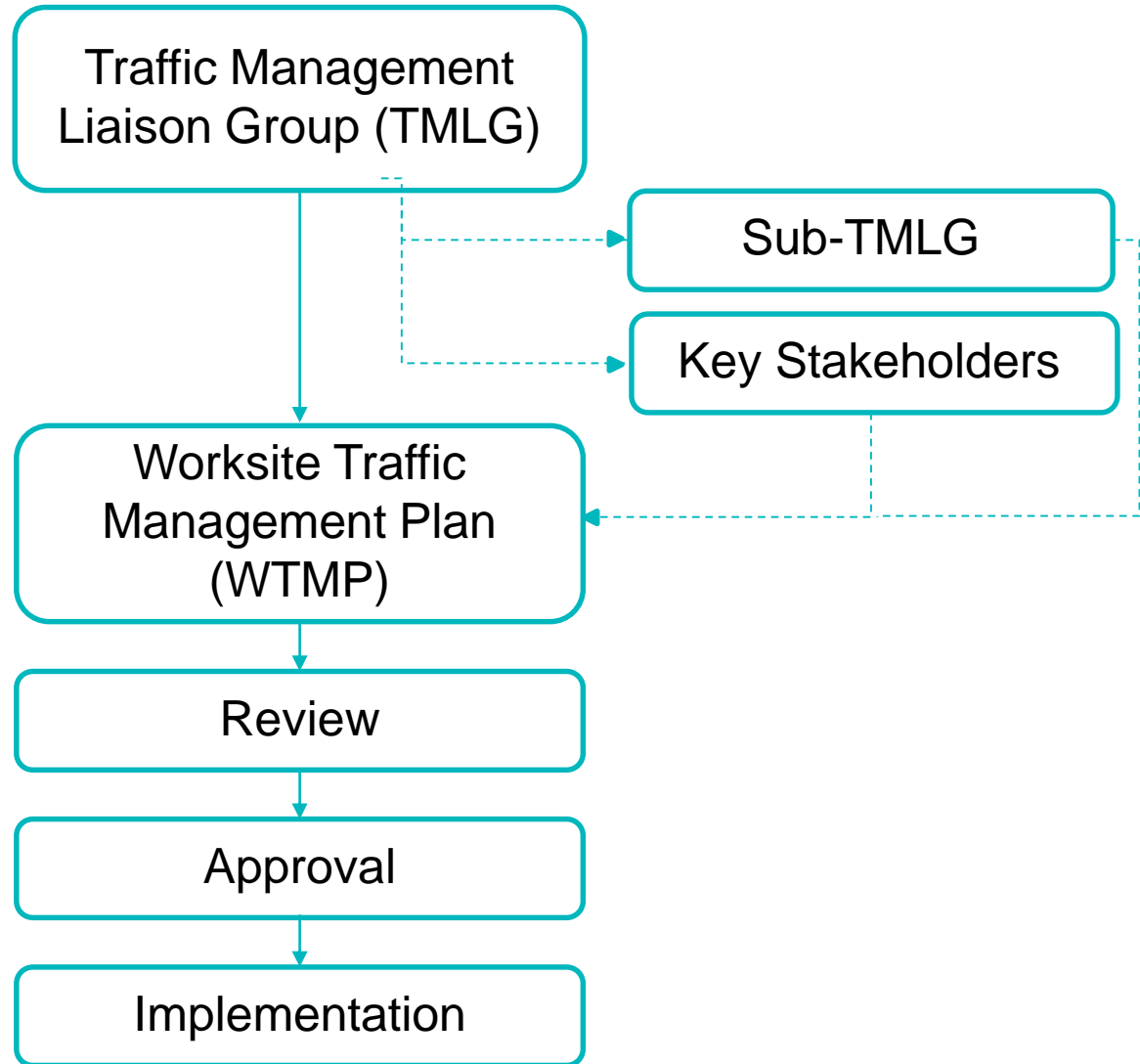
TRANSURBAN

Traffic management requirements

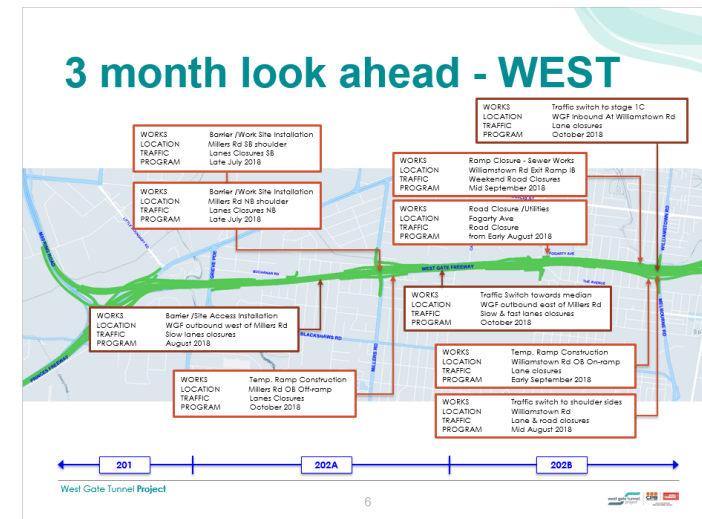
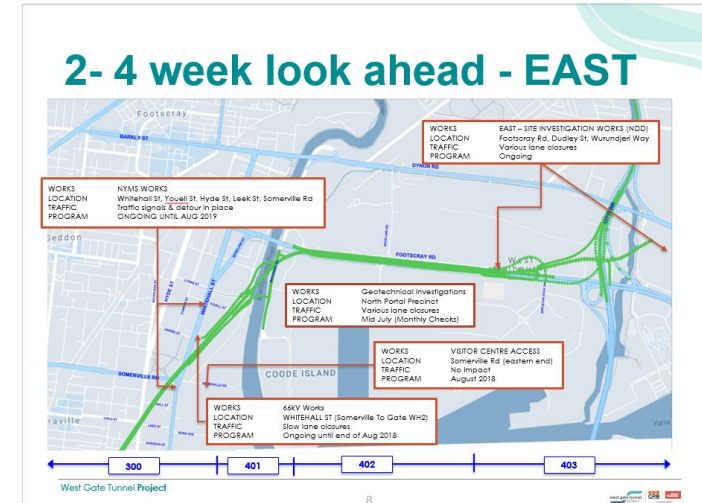
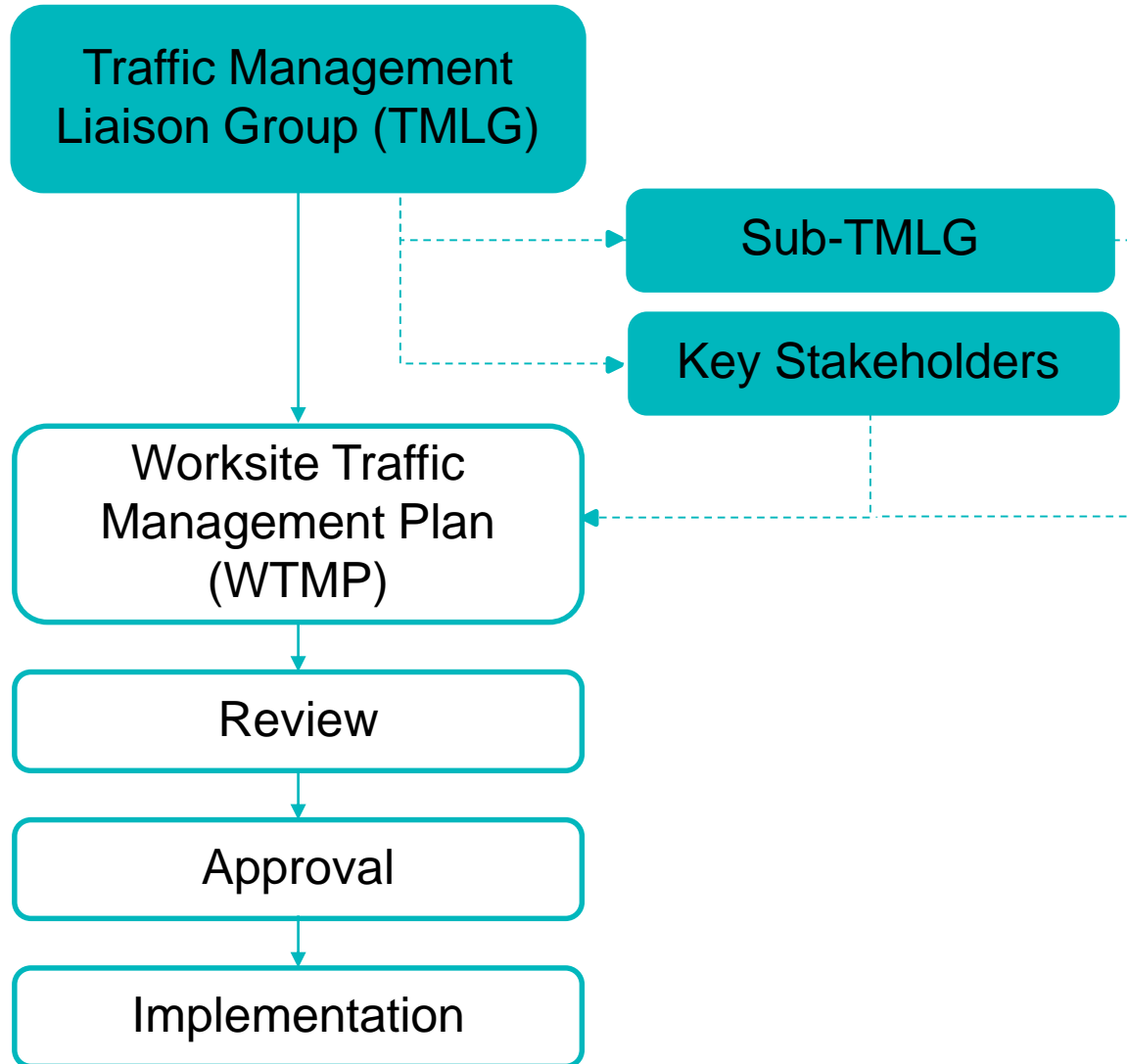
Environmental Performance Requirements – TP2, TP3 and TP7

- Develop and implement Traffic Management Plans (TMP) with measures to minimise disruptions
- TMPs must address a number of items including safety, traffic capacity, signage, timing, public transport and community and stakeholders
- Management of any temporary diversion of pedestrian or cycle paths to provide a safe, well-signposted alternative route and minimise impact on commuter travel times for cyclists as far as practicable
- Establish a Traffic Management Liaison Group (TP7)

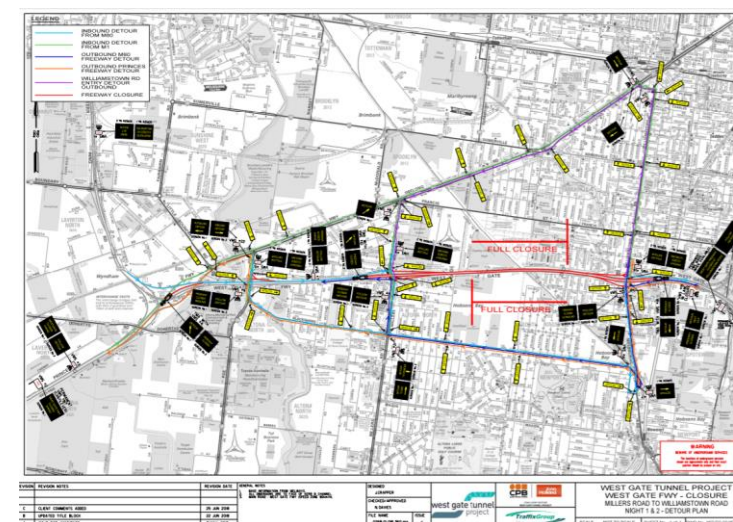
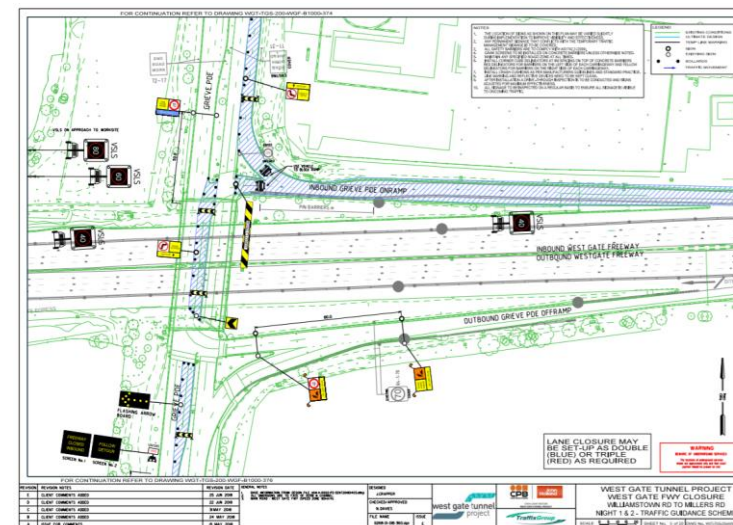
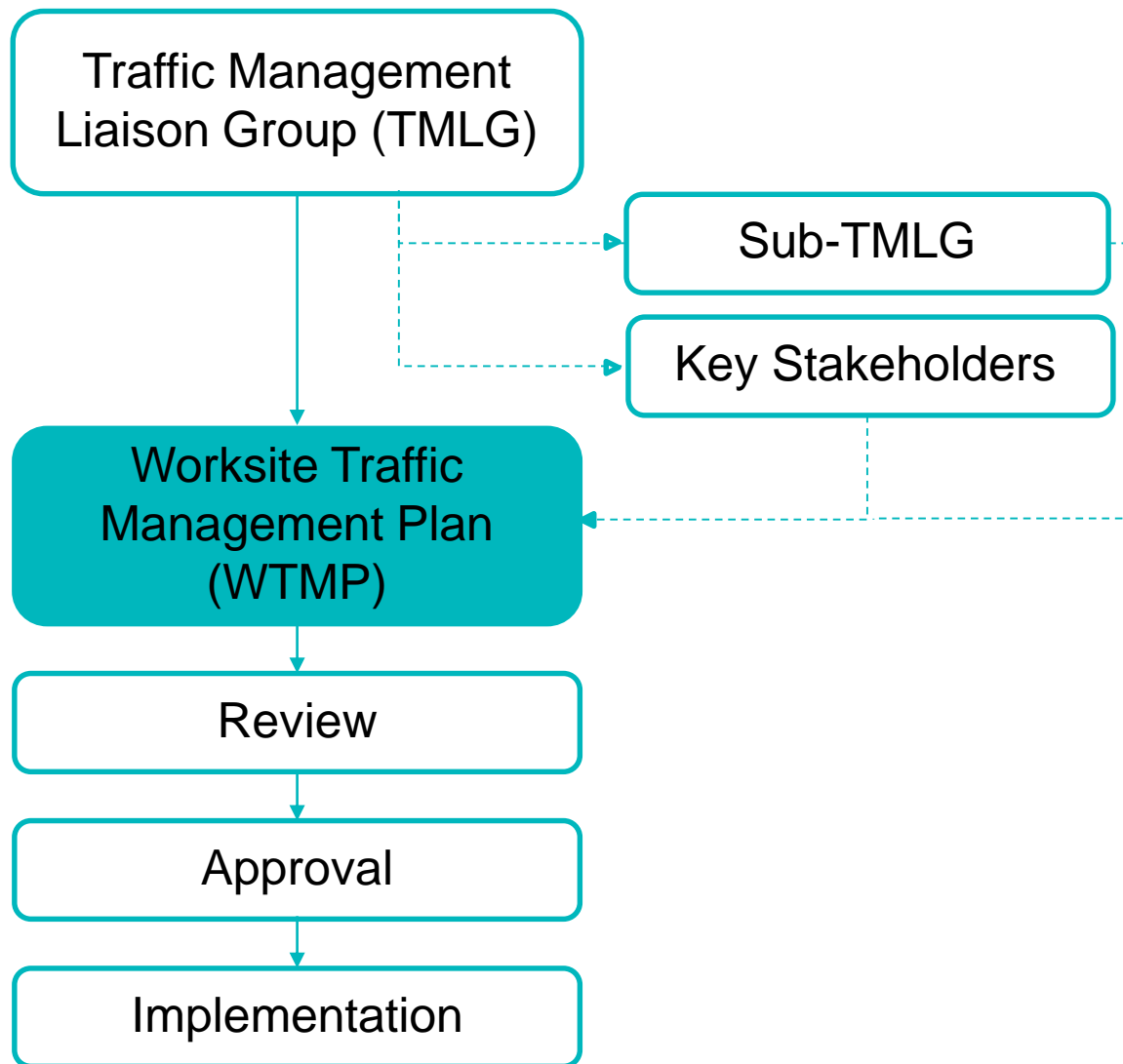
Traffic management – process



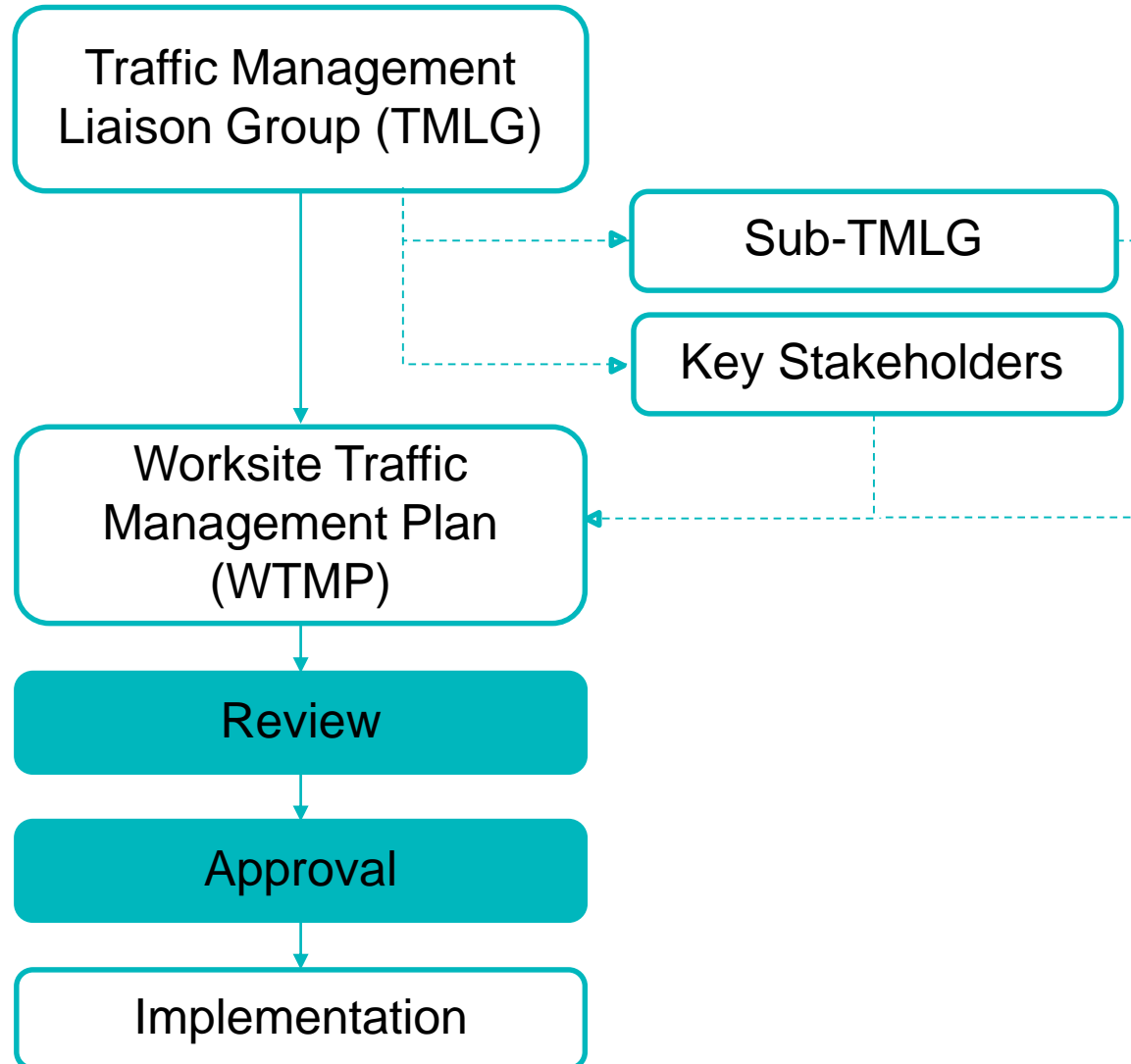
Traffic Management Liaison Group



Worksite Traffic Management Plans (WTMPs)



Development Process for WTMPs



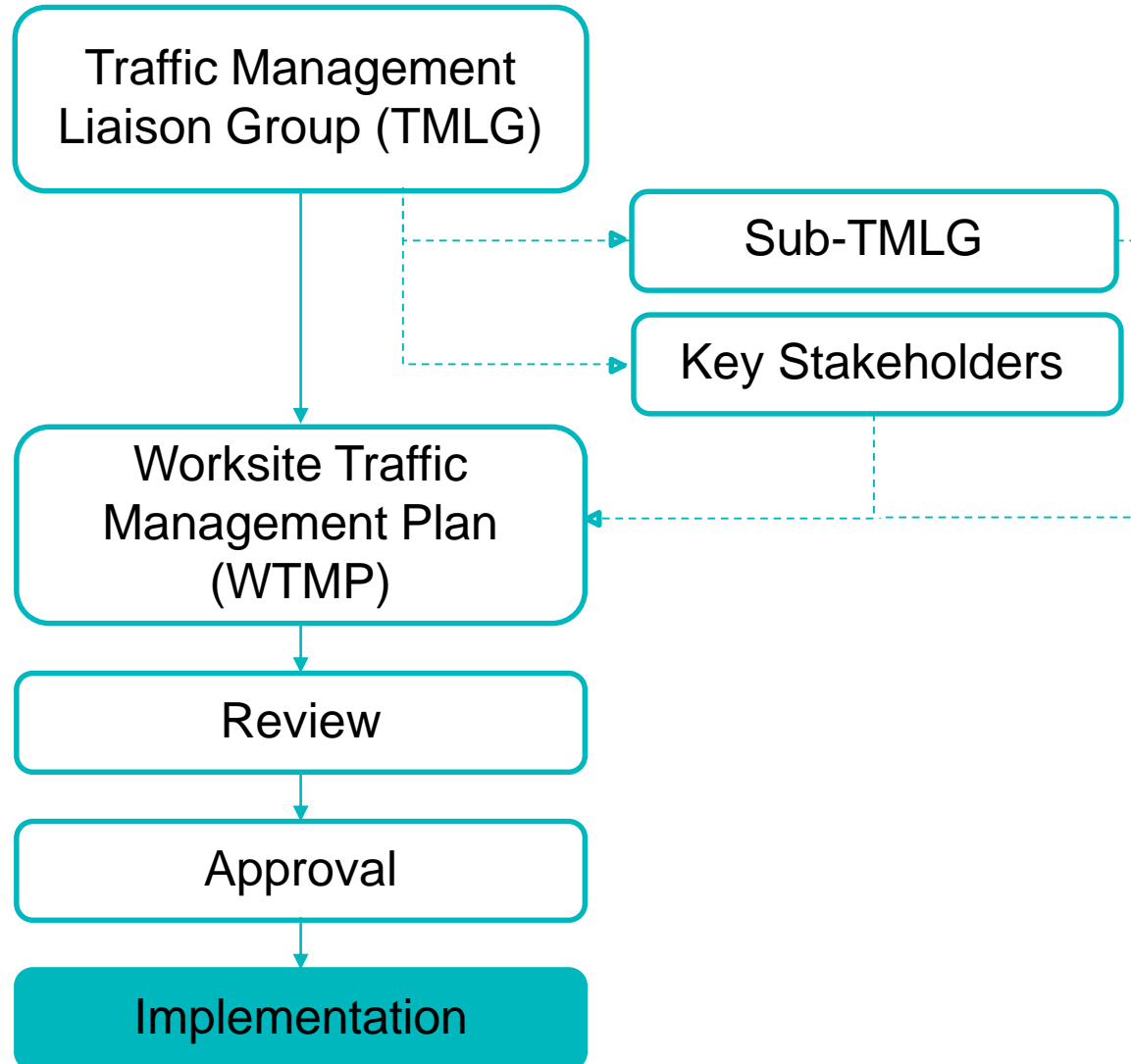
Worksite Traffic Management Plan

West Gate Tunnel

Title: West Gate Freeway – Full Closures
Document No: WGT-200-000-REP-CJH-750-TMP-1007



Development Process for WTMPs

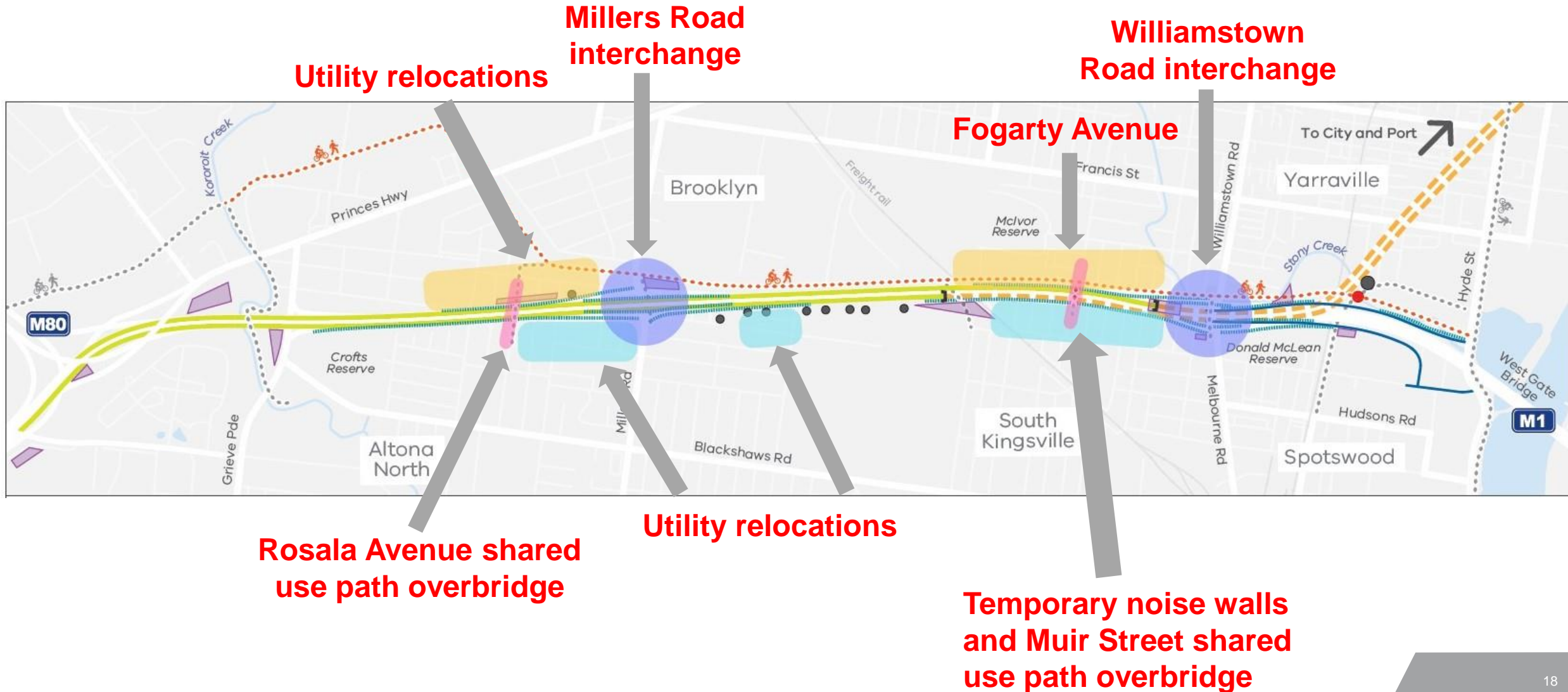


CONSTRUCTION UPDATE

ANTHONY VAVALLO

CPB JOHN HOLLAND JOINT VENTURE

Current and upcoming works



PROGRAM UPDATE

ANTHONY VAVALLO

Current and upcoming works

- Williamstown Road interchange
- Shared use path bridges
- North of the West Gate Freeway
- South of the West Gate Freeway
- Millers Road interchange

Williamstown Road interchange

September/October

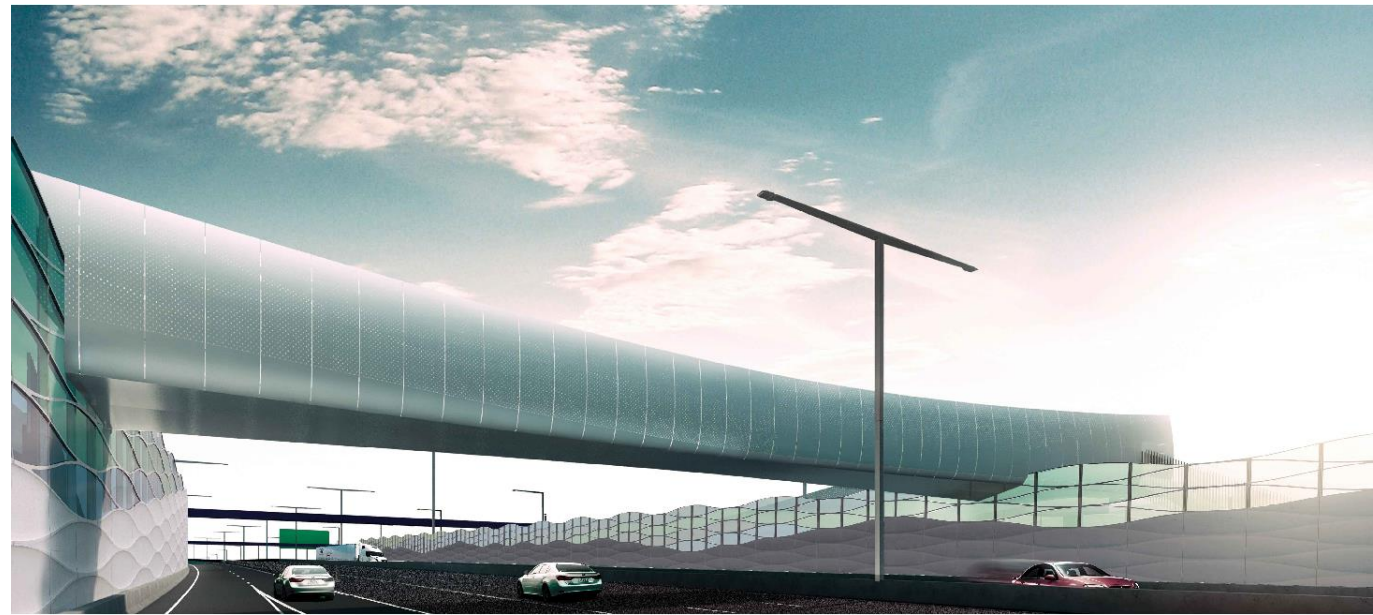
- Piling has commenced – will continue for approximately two months
- Removal of existing noise wall – end of Williamstown Road inbound exit ramp
- Sewer relocation – planned under weekend closures of the Williamstown Road inbound exit ramp (timing to be confirmed)

Shared use path bridges

September/October

Timing: 2018 –

- Two new shared use path pedestrian bridges
 - Rosala Avenue
 - Muir Street
- Works to start in coming months
 - piling to construct ramps and stairs
 - Structure built off-site to be craned in during freeway closure
- New shared use path bridges expected to be in place by late 2019
- Existing bridges will remain in place until new bridges are open



North of the West Gate Freeway

September/October

- Fogarty Avenue
 - 66kV relocation works have started
 - staged construction to reduce impacts on drivers and residents
 - extensive consultation
 - 220kV monopole installation - preparatory works including foundation pours
- Newport Rail bridge
 - Starting preparatory works
- Utility relocations
 - Buchanan Road and the reserve



Trenching works on Fogarty Avenue

South of the West Gate Freeway

September/October

- Start of piling works for new permanent noise walls and new Muir Street shared use path bridge
- Installation of temporary noise wall between Williamstown Road (Melbourne Road) and the Newport Rail line
- Utility relocations - installation of monopoles
 - Kyle Road – DELWP site



Temporary noise wall at the Williamstown Road exit ramp inbound

Millers Road interchange

September/October

- Millers Road site compound set up ongoing
- Millers Road traffic changes ongoing
- Paringa Road works to begin from mid-late September
 - long-term closure of Paringa Road from Millers Road
 - 66kV and 22kV relocation works to start
 - gas relocations
 - telecommunication relocations
 - extensive engagement with the Millers Road '16 Shops'



Keeping communities informed

July	August
14 door knocking events	20 door knocking events
6 notifications delivered	8 notifications delivered
26 face to face meetings	31 face to face meetings
221 incoming calls and emails (202 queries responded to within five days)	383 incoming calls and emails (352 queries responded to within five days)
2 pop ups	4 pop ups



Employment and learning opportunities

- Over 500 jobs for apprentices, trainees and graduates
- 400 jobs dedicated to people from the west
- Up to 150 jobs set aside for former auto workers
- Targeted recruitment of disadvantaged groups and ongoing workplace support during their employment
- CPBJH partnership with Victoria University Polytechnic

Group	Commitment	Outcome to 1 Sep 2018	Comment
Women	400 – 600	485	
Retrenched automotive workers	100 – 150	10	Significant opportunity in construction roles yet to commence
People seeking asylum	15 – 20	20	
New migrants (less than 52 weeks)	20 – 30	91	
People who identify as Aboriginal or Torres Strait Islander	80 -90	40	
People living with disability	30 – 40	13	
Students in juvenile detention (SWPL)	10 – 15		Yet to commence
Students from disadvantaged backgrounds (SWPL)	20 – 25		Yet to commence



Local business opportunities

Workforce trader directory has been launched to encourage staff to ‘buy local’.

Buying Australian goods and services:

- 93 percent of goods and services will be purchased from Australia/NZ suppliers, except for the specialist tunnel boring equipment
- 92 percent of steel used milled in Australia/NZ
- A strategy will be developed and implemented to ensure that goods and services are sourced from social enterprises and Aboriginal businesses
- Our Local Industry Development Plan will set out all targets in design and construction of tunnels, roadworks, elevated structures and lane use management systems.



QUESTIONS?

THANK YOU

