



**SUBURBAN  
RAIL LOOP**

# **Air Quality Monthly Report**

## **Tunnels South**

## **Tunnels North**

16 January – 15 February 2026

## Introduction

This summary report presents the results of the monthly air quality monitoring data for the construction of SRL East. Suburban Connect is delivering the Tunnels South works as Principal Contractor (PC) and Terra Verde is delivering the Tunnels North works as PC. The two delivery partners have individually prepared reports to comply with the Environmental Performance Requirement (EPR) for Air Quality. Laing O'Rourke (LOR) has completed the Early Works (EW) component as Managing Contractor (MC) in December 2025.

SRL East Tunnels South is a fully tunnelled metro corridor between Cheltenham and Glen Waverley. The delivery scope encompasses station boxes and twin segmentally lined bored tunnels with cross passages.

SRL East Tunnels North is a fully tunnelled metro corridor between Glen Waverley and Box Hill. The delivery scope encompasses an Emergency Support Facility Structure, station boxes, and twin segmentally lined bored tunnels with cross passages.

## Appendices

Appendix 1 – Tunnels South

Appendix 2 – Tunnels North

# **Suburban Rail Loop East Tunnels South Air Quality Monthly Report**

**16 January to 15 February 2026**

## Document Information

### Document Details

Document Number	SRL-WPC-SCC-SPKW-REP-XEV-PWD-000017
Revision Date	24-Mar-2026
Revision Number	C

## Revision Control

Revision Number	Change Detail	Date	Comment
A	Draft issued to SRLA	04/03/2026	Issued For Review
B	Updated to address comments	16/03/2026	Issued For Review
C	Updated to address comments	24/03/2026	Issued For Use

# Contents

<b>Executive Summary .....</b>	<b>5</b>
<b>1 Introduction .....</b>	<b>7</b>
1.1 SRL East.....	7
1.2 Environmental Management Framework .....	7
<b>2 Air Quality Monitoring .....</b>	<b>8</b>
2.1 Context.....	8
2.2 Purpose.....	8
2.3 Monitoring Locations.....	9
2.4 Data Limitations and Verification .....	9
<b>3 Results .....</b>	<b>11</b>
3.1 Cheltenham .....	11
3.1.1 Analysis.....	13
3.2 Train Stabling Facility West.....	13
3.2.1 Analysis.....	15
3.3 Clarinda TBM launch site .....	15
3.3.1 Analysis.....	16
3.4 Clayton.....	17
3.4.1 Analysis.....	19
3.5 Monash .....	20
3.5.1 Analysis.....	22
3.6 Meteorological Conditions .....	22
<b>4 Quality Assurance .....</b>	<b>24</b>
4.1 Data Capture .....	24
4.2 Data Validation .....	25
<b>Glossary .....</b>	<b>27</b>

## Tables

Table 1: Summary of air quality monitoring results .....	6
Table 2: Ambient air quality objectives for PM <sub>10</sub> .....	8
Table 3: Suburban Connect air quality monitoring locations for active works during reporting period.....	9
Table 8: Cheltenham PM <sub>10</sub> Results .....	12
Table 4: Train Stabling Facility West Site PM <sub>10</sub> Results .....	14
Table 5: Clarinda TBM launch site PM <sub>10</sub> Results .....	15
Table 6: Clayton PM <sub>10</sub> Results .....	18
Table 7: Monash PM <sub>10</sub> Results.....	20
Table 8: Daily weather observations for Moorabbin, Victoria.....	22
Table 9: Daily rain data for Moorabbin, Victoria .....	22

Table 10: Daily PM <sub>10</sub> Air Quality Monitoring Data Capture .....	24
Table 11: Monitoring device calibration information.....	25

## Figures

Figure 1: Cheltenham air quality monitoring stations.....	11
Figure 2: Daily Averages PM <sub>10</sub> Results at Cheltenham .....	12
Figure 3: Train Stabling Facility West site air quality monitoring stations.....	13
Figure 4: Daily Averages PM <sub>10</sub> Results at Train Stabling Facility West.....	14
Figure 5: Clarinda TBM launch site air quality monitoring stations .....	15
Figure 6: Daily Averages PM <sub>10</sub> Results at Clarinda TBM Launch Site .....	16
Figure 7: Clayton air quality monitoring stations .....	17
Figure 8: Daily Averages PM <sub>10</sub> Results at Clayton Site .....	18
Figure 9: Monash air quality monitoring stations.....	20
Figure 10: Daily Averages PM <sub>10</sub> Results at Monash.....	21
Figure 11: Daily relative humidity and temperature observations for Moorabbin, Victoria .....	23
Figure 12: Daily wind speed observations for Moorabbin, Victoria.....	23

# Executive Summary

## Key Outcomes

Key outcomes arising from the monthly air quality monitoring program:

- Visual air inspections were undertaken proactively to monitor and confirm there were no dust impacts due to works on site.
- All instances of elevated monitoring results were investigated and confirmed existing mitigation measures were sufficient to manage dust risks onsite.

## Purpose of the Report

This report presents the results of the monthly review of the air quality monitoring data for each Suburban Rail Loop (SRL) East main works construction site for the period between 16 January to 15 February 2026 in accordance with SRL East Environmental Management Framework (EMF) and Environmental Performance Requirements (EPRs) AQ1 and AQ2.

Suburban Connect is implementing an air quality monitoring program on each site that includes both visual observation and instrumental air quality monitoring. The purpose of the air quality monitors is to measure the concentration of small dust particles in the air near the construction site. These particles, known as PM<sub>10</sub> have the potential to impact human health. PM<sub>10</sub> refers to particles with an aerodynamic diameter of 10 µm or less.

This report compares the measured concentrations to air quality objectives that are defined in the Environment Reference Standard (ERS) which is a tool under the Environment Protection Act 2017. The ERS sets out the air quality objectives for PM<sub>10</sub> which are measured over a 24-hour averaging period.

The objectives are risk-based concentrations that are not intended to be compliance levels, but they assist Suburban Connect understand the risk to human health. When the instrumental monitor and/or visual observations identify a change in site conditions this prompts Suburban Connect to take actions on site to reduce dust impacts, and review mitigation measures applied.

## Scope of Reporting

Construction works requiring air quality monitoring occurred at the following site/s during this reporting period:

- Train Stabling Facility West
- Clarinda TBM launch site
- Clayton
- Monash
- Cheltenham

This report does not include:

- Works delivered as SRL Initial Works. The SRL Initial Works, which include investigative works are not subject to the EMF and EPRs.
- Monitoring related to asbestos containing material removal works, which is monitored and reported separately.

- Analysis of days TARP triggered in the month, where there were no TARP Actions Implemented and no daily average PM<sub>10</sub> of >50 µg/m<sup>3</sup>

## Results

The key findings are summarised in Table 1. An analysis of these findings is provided in Section 3.

**Table 1: Summary of air quality monitoring results**

Location	Parameter	Averaging Period	Max Concentration (µg/m <sup>3</sup> )	Median Concentration (µg/m <sup>3</sup> )	Days TARP Triggered in the Month	Days TARP Actions Implemented in the Month
<b>Representative Background Locations</b>						
Dandenong	PM <sub>10</sub>	24-hour	82.2	29.5	-	-
<b>Train Stabling Facility West</b>						
Linear Reserve North	PM <sub>10</sub>	24-hour	34.4	20.0	3	0
South	PM <sub>10</sub>	24-hour	54.1	28.2	4	0
<b>Clarinda TBM launch site</b>						
CC01	PM <sub>10</sub>	24-Hour	32.3	19.4	0	0
CC08	PM <sub>10</sub>	24-Hour	83.1	51.5	18	0
South Boundary	PM <sub>10</sub>	24-Hour	80.7	46.2	17	0
<b>Clayton</b>						
Central	PM <sub>10</sub>	24-hour	25.3	15.0	0	0
East	PM <sub>10</sub>	24-hour	62.2	36.0	2	0
North West	PM <sub>10</sub>	24-hour	53.4	28.9	1	0
South	PM <sub>10</sub>	24-hour	46.7	20.0	1	0
<b>Monash</b>						
54 Howleys East Boundary	PM <sub>10</sub>	24-hour	53.9	29.1	11	1
North EW Boundary	PM <sub>10</sub>	24-hour	61.1	29.5	3	0
LP1 SE Boundary	PM <sub>10</sub>	24-hour	50.8	22.0	3	0
Monash Site Compound	PM <sub>10</sub>	24-hour	46.1	46.1	1	0
<b>Cheltenham</b>						
North	PM <sub>10</sub>	24-hour	26.1	19.0	0	0

# 1 Introduction

## 1.1 SRL East

Suburban Rail Loop (SRL) will deliver a 90km rail line linking every major train service from the Frankston Line to the Werribee Line via Melbourne Airport and transforming our public transport network.

SRL East from Cheltenham to Box Hill is now in major construction. The new rail line will connect major employment, health, education and retail destinations in Melbourne's east and south east, slashing travel times, reducing congestion and connecting passengers travelling on the Gippsland corridor to destinations across Melbourne.

The SRL East – Tunnels South scope of works include:

- Initial launch of four TBMs from the Clarinda TBM launch site
- Construction of approximately 16km of twin tunnels between Cheltenham and Glen Waverley
- Construction of cross passages between the tunnels
- Construction of the western and eastern decline structures at the train stabling facility
- Protection of the South Eastern Trunk Sewer (SETS)
- Box excavations at Clayton and Monash station locations
- Interface works with the Melbourne Metro Rail Network.

This report does not include works delivered as SRL Initial Works. The SRL Initial Works, which includes investigative works, were subject to a separate approval process under Clause 52.30 of the Victoria Planning Provisions (VPP) and were approved by the Minister for Planning on 19 December 2021. These works are required to comply with Clause 52.30 of the VPP and are not subject to the EMF and EPRs.

## 1.2 Environmental Management Framework

The EMF for SRL East provides a transparent and integrated framework to manage environmental effects of the Project and includes EPRs that define environmental outcomes that must be achieved during the design, construction, and operation phases of the Project. The EMF is available on the SRL east website at <https://bigbuild.vic.gov.au/library/suburban-rail-loop/planning/srl-east-environmental-management-framework>

The development of the EMF has been informed by relevant legislation, policy and guidelines, and the specialist impact assessment studies completed for the SRL East Environment Effects Statement (EES) and the Minister's Assessment, dated 5 August 2022.

The EMF requires the Principal Contractor (PC) to develop and implement an Environmental Air Quality and Dust Management Plan (EAQDMP). As part of implementing this document plan, the PC is required to conduct monitoring of PM<sub>10</sub> concentrations and measure wind speed and direction at each Early Works construction site and at a representative control site. The EAQDMP also includes a Trigger Action Response Protocol (TARP) which defines a set of triggers that prompt actions on site to reduce dust impacts, and review mitigation measures applied.

The PC regularly reviews the monitoring data at each site, for the purpose of assessing the effectiveness of EAQDMP implementation. The verified results of the PM<sub>10</sub> monitoring for the applicable monthly period are contained in this report, which will be available to the public, in accordance with the requirements of the EMF.

# 2 Air Quality Monitoring

## 2.1 Context

Maintaining air quality is important for public health, the liveability of our cities and our environment. Overall air quality conditions in Melbourne are good, however like all major cities, there are days where the background concentrations of air pollutants are very high on a regional basis. Sometimes these elevated concentrations are due to regional influences such as windblown continental dust, bushfires or hazard reduction burns. Emissions from traffic, home heating, and industrial emissions across Melbourne can also cause high background concentrations, especially when the weather is calm. Environment Protection Authority (EPA) monitoring stations measure these background levels of pollution that already exist in the air within the surrounding area. The EPA monitoring station at Dandenong is used as the representative control site for Suburban Connect work sites.

Without effective management, construction of the Project has the potential to contribute to these background concentrations which may impact public health. Comparison of SRL East monitoring results with publicly available EPA monitoring data is used by the PC to identify when construction-related activities are impacting local air quality, and conversely when the local air quality results may be influenced by background conditions outside of the influence of the construction site.

Meteorological conditions, such as wind direction and speed, can impact on the dispersion of particulates in the air and by monitoring these, the PC can respond when conditions on site change. Having records of wind conditions is also helpful for retrospectively identifying the activity that is causing any elevated dust concentrations.

## 2.2 Purpose

The purpose of the air quality monitors is to measure the concentration of small dust particles in the air near the construction site. These particles, known as PM<sub>10</sub> have the potential to impact human health. PM<sub>10</sub> refers to particles with an aerodynamic diameter of 10 µm or less.

The measured concentrations are compared to air quality objectives that are defined in the Environment Reference Standard (ERS) which is a tool under the Environment Protection Act 2017. The air quality objectives defined in the ERS informed the objectives for air quality for the Project, noting that the ambient air ERS is not a compliance standard that one can pollute up to. The ERS does not provide an indicator or objective for nuisance dust.

The objectives are risk-based concentrations that are not intended to be compliance levels, but they assist the PC to understand the risk to human health. The ERS sets out the air quality objectives for PM<sub>10</sub> which are measured over a 24-hour averaging period, as reproduced below in Table 2.

**Table 2: Ambient air quality objectives for PM<sub>10</sub>**

Indicator	Air Quality Objective (µg/m <sup>3</sup> )	Averaging Period
Indicator Particles as PM <sub>10</sub> (maximum concentration)	50	24-hour

The measured concentrations (which include both existing background concentrations and the Project's incremental contribution over a 24-hour period) are presented in Section 3 and compared against the air quality objective. Monitoring is continuous, even when there are no construction-related activities occurring on the site. Periods of time where there are no site activities are classified as 'out of hours'. The potential for dust

generation from the work sites is much lower when there are no site activities occurring, however dust can still be generated at the work site during ‘out of hours’ periods due to wind erosion.

## 2.3 Monitoring Locations

Air quality monitors are located on or adjacent to the construction sites, to represent local air quality conditions and measure the potential impact of works on local sensitive receivers including residents. As activities and site layouts change throughout construction, monitors will be moved to maintain the most optimal location for ongoing monitoring of air quality.

The air quality monitors were installed on the following dates at each of the following locations. The indicative locations of these monitors are shown on maps in Section 3 of this report.

**Table 3: Suburban Connect air quality monitoring locations for active works during reporting period.**

Monitoring Location	Date Commissioned	Monitoring Parameters	Representative Control Site
<b>Train Stabling Facility West</b>			
South	8 May 2025	PM <sub>10</sub>	Dandenong EPA monitoring station
Linear Reserve North	15 May 2025	PM <sub>10</sub>	Dandenong EPA monitoring station
<b>Clarinda TBM Launch Site</b>			
CC01	1 June 2025	PM <sub>10</sub>	Dandenong EPA monitoring station
CC08	01 Dec 2025	PM <sub>10</sub>	Dandenong EPA monitoring station
South Boundary	21 Feb 2025	PM <sub>10</sub>	Dandenong EPA monitoring station
<b>Clayton</b>			
Central	21 May 2025	PM <sub>10</sub>	Dandenong EPA monitoring station
North West	3 Dec 2024	PM <sub>10</sub>	Dandenong EPA monitoring station
South	5 Mar 2025	PM <sub>10</sub>	Dandenong EPA monitoring station
East	4 Jun 2025	PM <sub>10</sub>	Dandenong EPA monitoring station
<b>Monash</b>			
54 Howleys East Boundary	2 Jul 2025	PM <sub>10</sub>	Dandenong EPA monitoring station
North EW Boundary	17 Dec 2025	PM <sub>10</sub>	Dandenong EPA monitoring station
LP1 SE Boundary	13 Jan 2026	PM <sub>10</sub>	Dandenong EPA monitoring station
Monash Site Compound	19 Nov 2025	PM <sub>10</sub>	Dandenong EPA monitoring station
<b>Cheltenham</b>			
North	04 Feb 2026	PM <sub>10</sub>	Dandenong EPA monitoring station

## 2.4 Data Limitations and Verification

The following limitations apply to this data:

- Meteorological conditions on site can affect measurements made by monitoring devices. For instance, dust measurements can be impacted by rainfall, fog and/or humidity (with water droplets in the air being mistaken as dust particles). Displaying periods of inclement weather allows reviewers to identify measurements that may have been impacted.
- Proximity of site monitors to public roads, industrial businesses, ambient weather conditions (i.e. dry weather, wind, bushfires) and other factors will impact data recording and may trigger the TARP

- Breaks in data availability may occur due to sensor outages, instrument errors, technical issues, or removal of sensors during non-working periods to ensure the security of the equipment.
- Monitors may need to be located close to works due to security requirements.
- Monitor locations will change as works progress and construction activity locations change.

Data has been provided in tabular and graphical form in Section 3 to visually present 24-hour averages of  $PM_{10}$  over the monthly period. The data included in this report has been verified by the Suburban Connect and relevant subject matter experts.

## 3 Results

Data has been presented in graphical form below to visually present 24-hour averages of PM<sub>10</sub> dust concentration over the monthly period for each active construction site.

The indicative air monitoring levels measured by sensors show the levels are generally in the range of 10 µg/m<sup>3</sup> and 40 µg/m<sup>3</sup>, with the exception of the Clarinda TBM Launch Site which includes indicative air monitoring levels higher than 50 µg/m<sup>3</sup>. The sensor data has been adjusted to closer align with EPA's air quality monitoring station data at Dandenong.

EPA's Dandenong air quality monitoring station is categorised to be generally representative of the area, with typical levels ranging from approximately 10 µg/m<sup>3</sup> and 40 µg/m<sup>3</sup>.

The average levels of PM<sub>10</sub> measured over a 24-hour period is compared to the Environment Reference Standard of 50 µg/m<sup>3</sup> to understand air quality impacts.

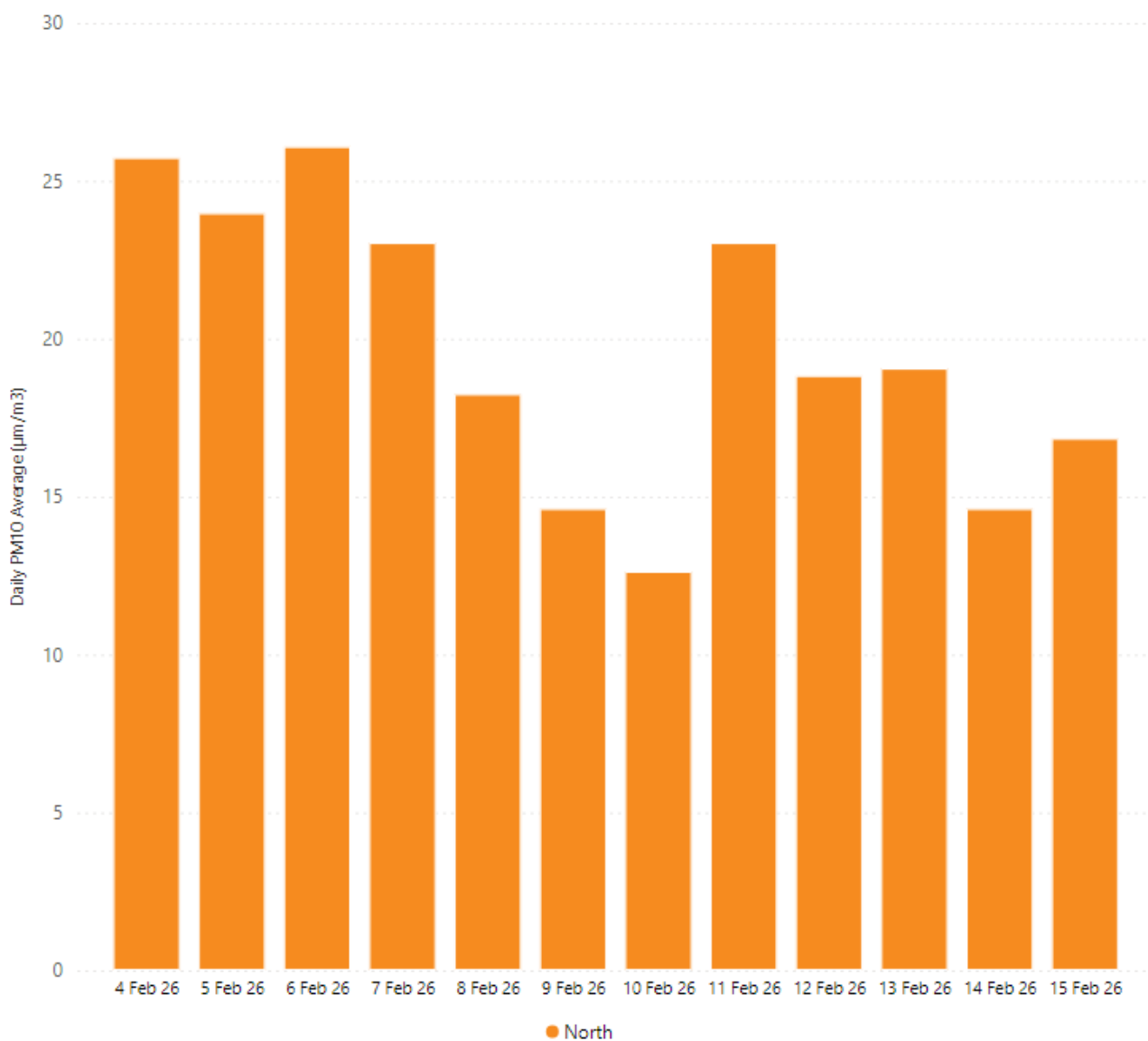
### 3.1 Cheltenham



**Figure 1: Cheltenham air quality monitoring stations**

**Table 8: Cheltenham PM<sub>10</sub> Results**

Location	Parameter	Averaging Period	Max Concentration (µg/m <sup>3</sup> )	Median Concentration (µg/m <sup>3</sup> )	Days TARP Triggered in the Month	Days TARP Actions Implemented in the Month
<b>Representative Background Locations</b>						
Dandenong	PM <sub>10</sub>	24-hour	82.2	29.5	-	-
<b>Cheltenham</b>						
North	PM <sub>10</sub>	24-hour	26.1	19.0	0	0


**Figure 2: Daily Averages PM<sub>10</sub> Results at Cheltenham**

### 3.1.1 Analysis

Measures implemented to proactively manage dust on this site include the use of water carts while demolition works are occurring at Cheltenham. The North monitoring location was established on 4 February 2026.

There has been no elevated daily PM<sub>10</sub> events above 50 µg/m<sup>3</sup> during the reporting, and no further TARP actions were required.

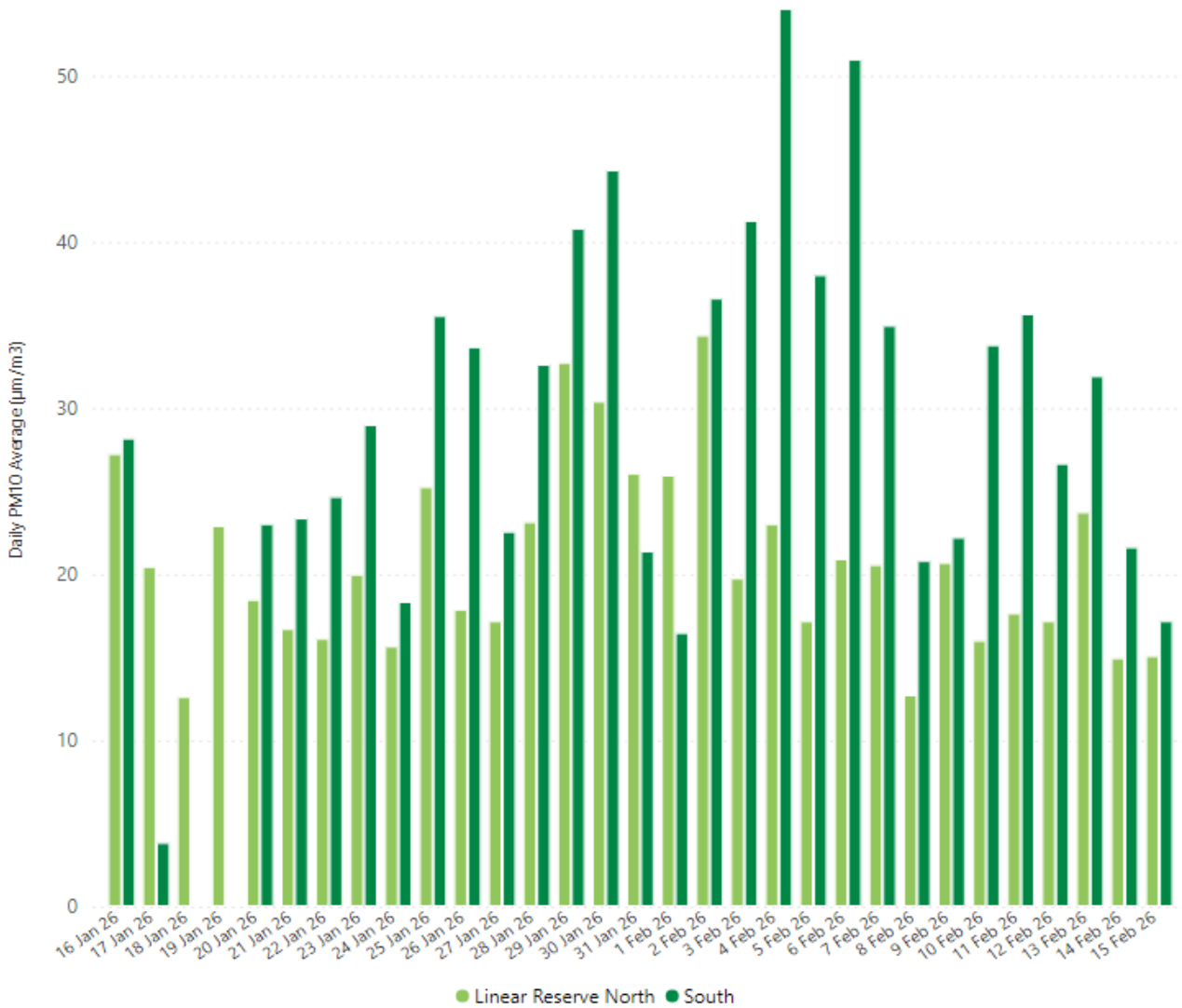
## 3.2 Train Stabling Facility West



Figure 3: Train Stabling Facility West site air quality monitoring stations

**Table 4: Train Stabling Facility West Site PM<sub>10</sub> Results**

Location	Parameter	Averaging Period	Max Concentration (µg/m <sup>3</sup> )	Median Concentration (µg/m <sup>3</sup> )	Days TARP Triggered in the Month	Days TARP Actions Implemented in the Month
<b>Representative Background Locations</b>						
Dandenong	PM <sub>10</sub>	24-hour	82.2	29.5	-	-
<b>Train Stabling Facility West</b>						
Linear Reserve North	PM <sub>10</sub>	24-hour	34.4	20.0	3	0
South	PM <sub>10</sub>	24-hour	54.1	28.2	4	0



**Figure 4: Daily Averages PM<sub>10</sub> Results at Train Stabling Facility West**

### 3.2.1 Analysis

Measures implemented to proactively manage dust on this site included water carts, wheel wash and street sweepers. In addition, daily observations by supervisors and environmental representatives are performed to respond to areas of concern. Visual air inspections are also undertaken to proactively monitor and confirm there was no off-site dust impacts due to construction activities on site and to mitigate any interruptions to monitoring equipment. The TARP was triggered on six days at multiple locations during the period.

Two elevated daily average PM<sub>10</sub> events above 50 µg/m<sup>3</sup> occurred at the South monitor during the reporting period. Visual inspections confirmed ambient weather conditions and external dust sources were contributing to elevated readings. Dust management measures were confirmed to be active and sufficient for the activities on site.

The SSY West – North monitor was removed from site this month, as monitors at the Linear Reserve North and South locations provide sufficient coverage of current construction activities.

### 3.3 Clarinda TBM launch site



Figure 5: Clarinda TBM launch site air quality monitoring stations

Table 5: Clarinda TBM launch site PM<sub>10</sub> Results

Location	Parameter	Averaging Period	Max Concentration (µg/m <sup>3</sup> )	Median Concentration (µg/m <sup>3</sup> )	Days TARP Triggered in the Month	Days TARP Actions Implemented in the Month
<b>Representative Background Locations</b>						
Dandenong	PM <sub>10</sub>	24-hour	82.2	29.5	-	-

Location	Parameter	Averaging Period	Max Concentration (µg/m³)	Median Concentration (µg/m³)	Days TARP Triggered in the Month	Days TARP Actions Implemented in the Month
<b>Clarinda TBM launch site</b>						
CC01	PM <sub>10</sub>	24-Hour	32.3	19.4	0	0
CC08	PM <sub>10</sub>	24-Hour	83.1	51.5	18	0
South Boundary	PM <sub>10</sub>	24-Hour	80.7	46.2	17	0

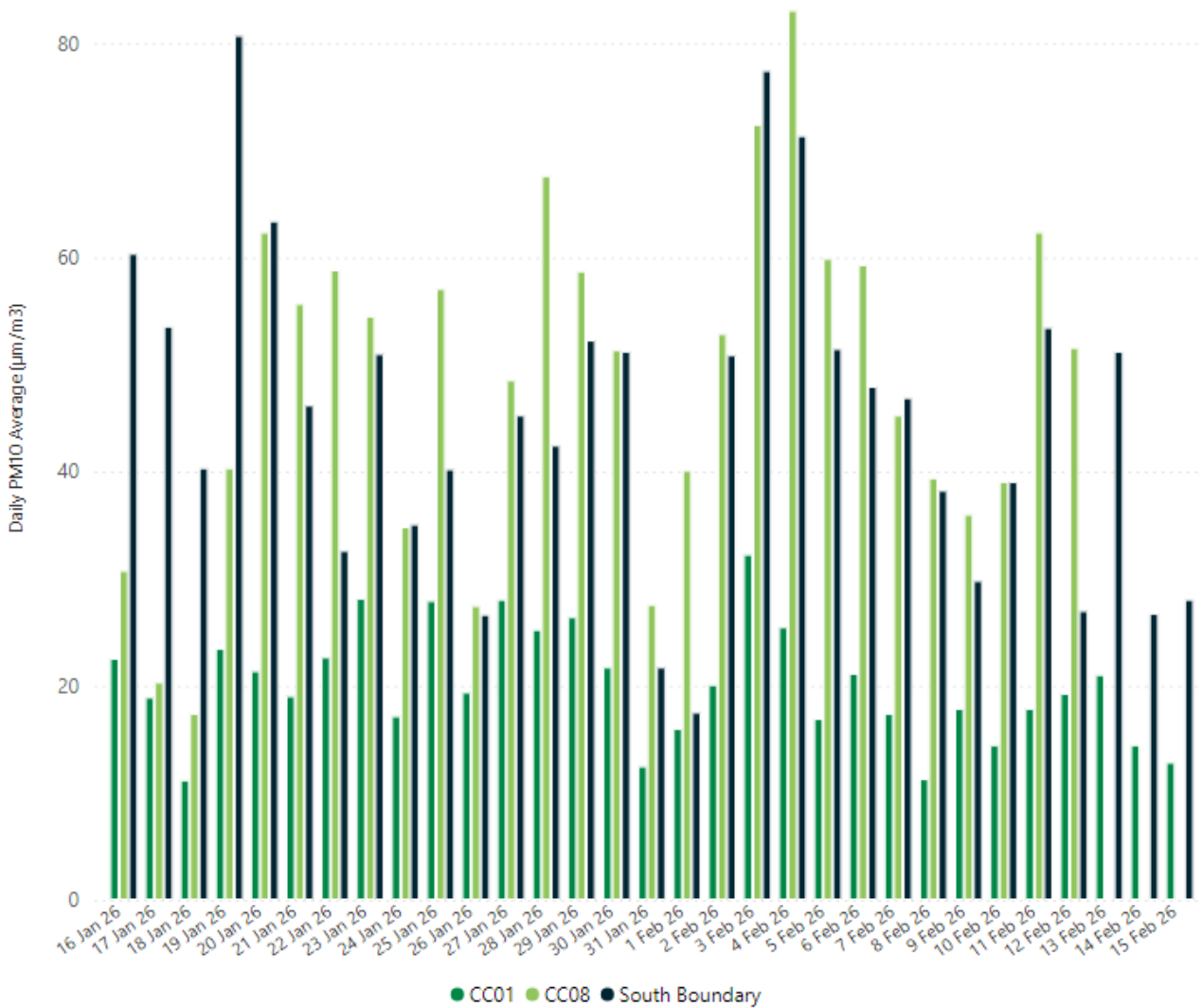


Figure 6: Daily Averages PM<sub>10</sub> Results at Clarinda TBM Launch Site

### 3.3.1 Analysis

Measures implemented to proactively manage dust on this site included a boundary sprinkler system, water carts, rumble grids, and street sweepers. In addition, daily observations by supervisors and environmental

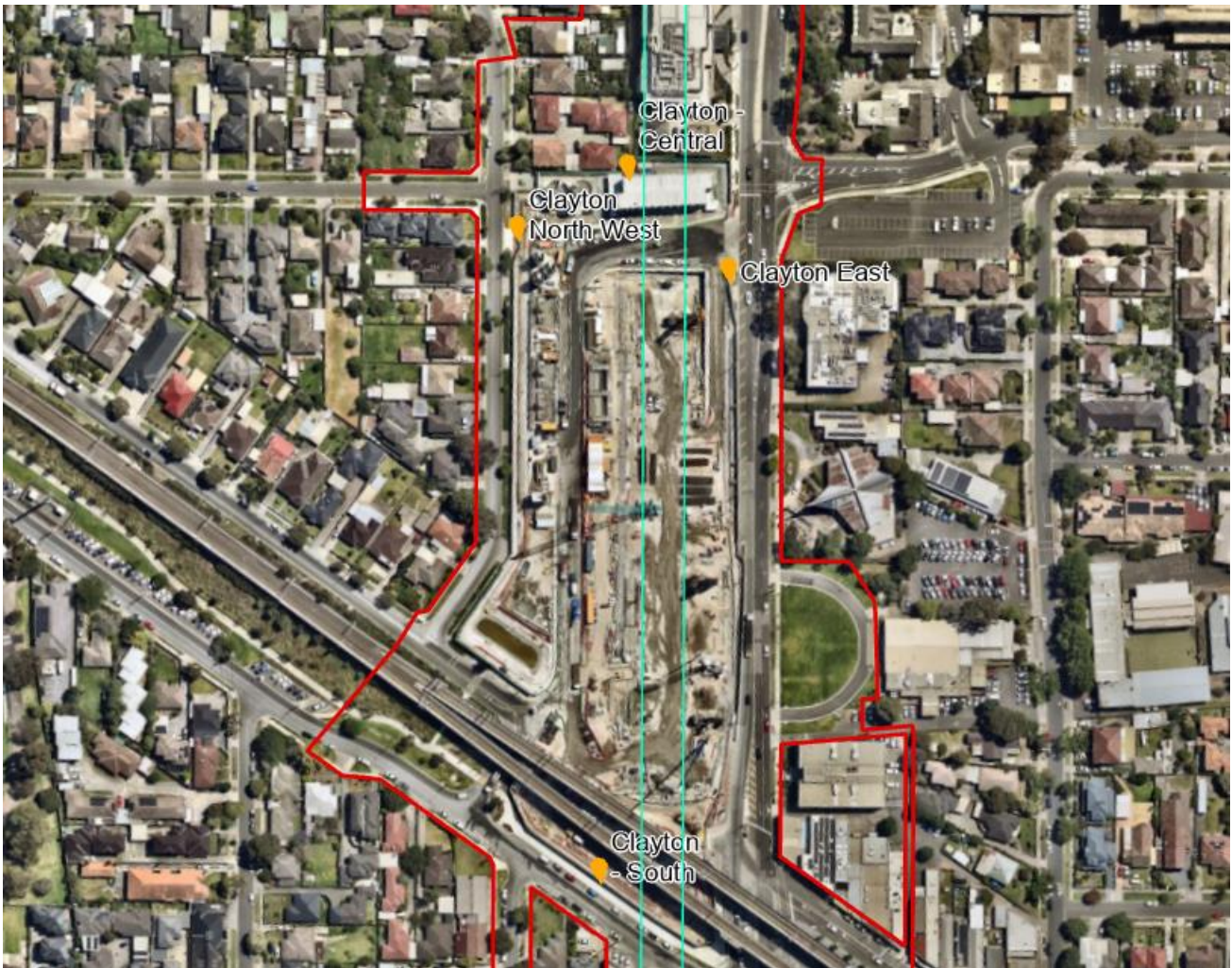
representatives are performed to respond to areas of concern. Visual air inspections are also undertaken to proactively monitor and confirm there are no off-site dust impacts due to construction activities on site and to mitigate any interruptions to monitoring equipment. The TARP was triggered on twenty-three days during the reporting period at multiple locations. On four of these days – 24, 25, 27 January and 9 February – there were no works occurring on site.

Thirteen elevated daily average PM<sub>10</sub> events above 50 µg/m<sup>3</sup> occurred at the South Boundary monitor and fifteen elevated daily average PM<sub>10</sub> events above 50 µg/m<sup>3</sup> occurred at CC08 during the reporting period.

Investigations determined the elevated levels were due to external sources, with environmental factors including extended dry periods, high winds and bushfire smoke, as well as the proximity to traffic on Kingston Road. Site inspections confirmed dust management measures were active and sufficient for the activities on site and no further TARP actions were required.

The CC08 monitor was offline from 13 February 2026 onwards due to technical issues. Monitor has since been replaced on 24 February 2026.

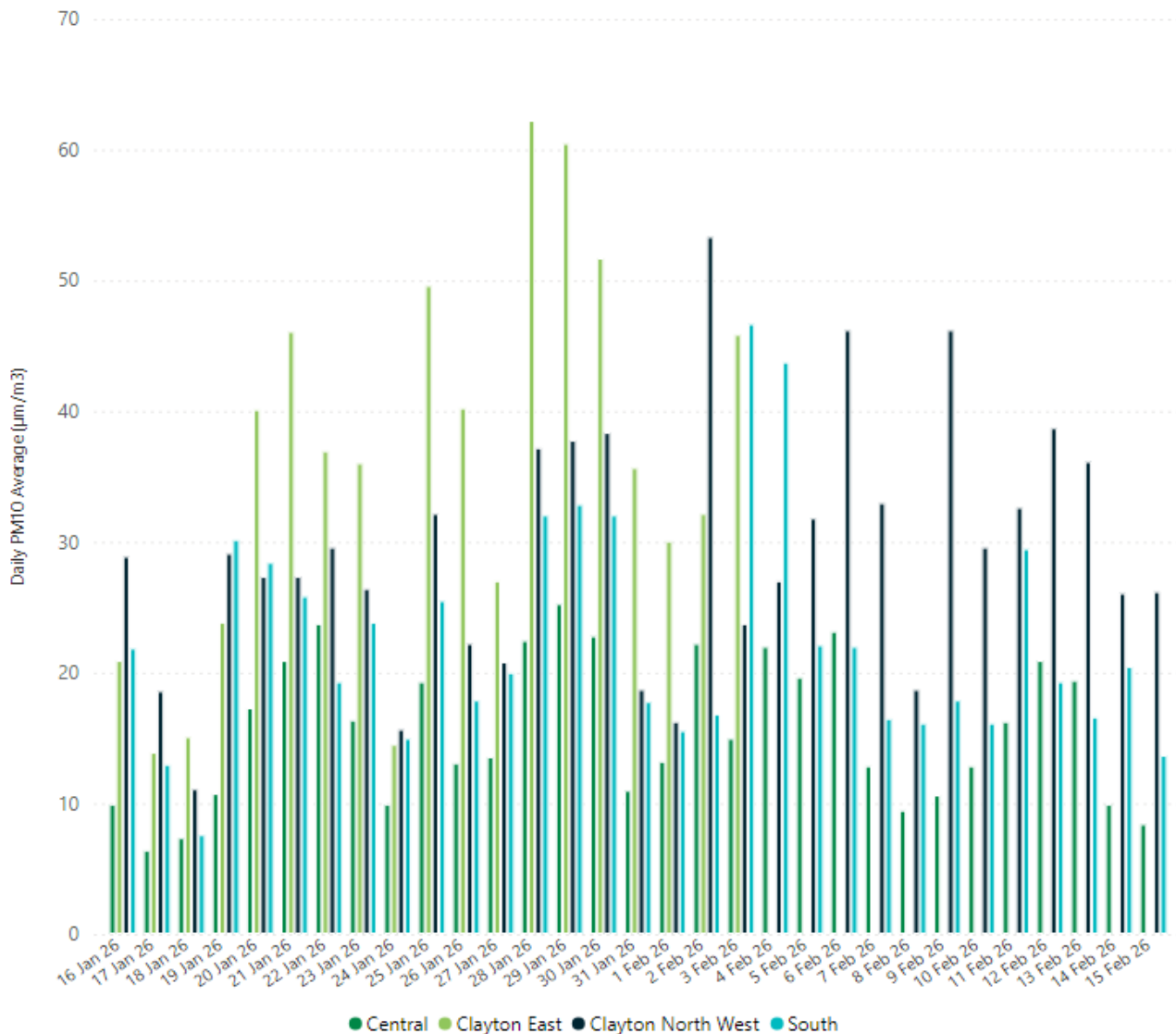
### 3.4 Clayton



**Figure 7: Clayton air quality monitoring stations**

**Table 6: Clayton PM<sub>10</sub> Results**

Location	Parameter	Averaging Period	Max Concentration (µg/m <sup>3</sup> )	Median Concentration (µg/m <sup>3</sup> )	Days TARP Triggered in the Month	Days TARP Actions Implemented in the Month
<b>Representative Background Locations</b>						
Dandenong	PM <sub>10</sub>	24-hour	82.2	29.5	-	-
<b>Clayton</b>						
Central	PM <sub>10</sub>	24-hour	25.3	15.0	0	0
East	PM <sub>10</sub>	24-hour	62.2	36.0	2	0
North West	PM <sub>10</sub>	24-hour	53.4	28.9	1	0
South	PM <sub>10</sub>	24-hour	46.7	20.0	1	0


**Figure 8: Daily Averages PM<sub>10</sub> Results at Clayton Site**

### 3.4.1 Analysis

Measures implemented to proactively manage dust on this site include water carts and street sweepers. Sealed surfaces have also contributed to reducing dust on site. In addition, daily observations by supervisors and environmental representatives are performed to respond to areas of concern. Visual air inspections are also undertaken to proactively monitor and confirm there are no off-site dust impacts due to construction activities on site and to mitigate any interruptions to monitoring equipment. The TARP was triggered on four days during the reporting period.

One elevated daily average PM<sub>10</sub> events above 50 µg/m<sup>3</sup> occurred at the North West monitor and three elevated daily average PM<sub>10</sub> events above 50 µg/m<sup>3</sup> occurred at the East monitor during the reporting period. Investigations determined the elevated levels were due to external sources, with environmental factors including extended dry periods, high winds and bushfire smoke as well as dust migration. Dust management measures were confirmed to be active and sufficient for the activities on site and no further TARP actions were required.

The Clayton East monitor was relocated to the North West location on 3 February 2026 and replaced the existing monitor there. This was due to technical issues with the North West monitor and inaccurate data readings from the East monitor as it was located along Clayton Road.

### 3.5 Monash

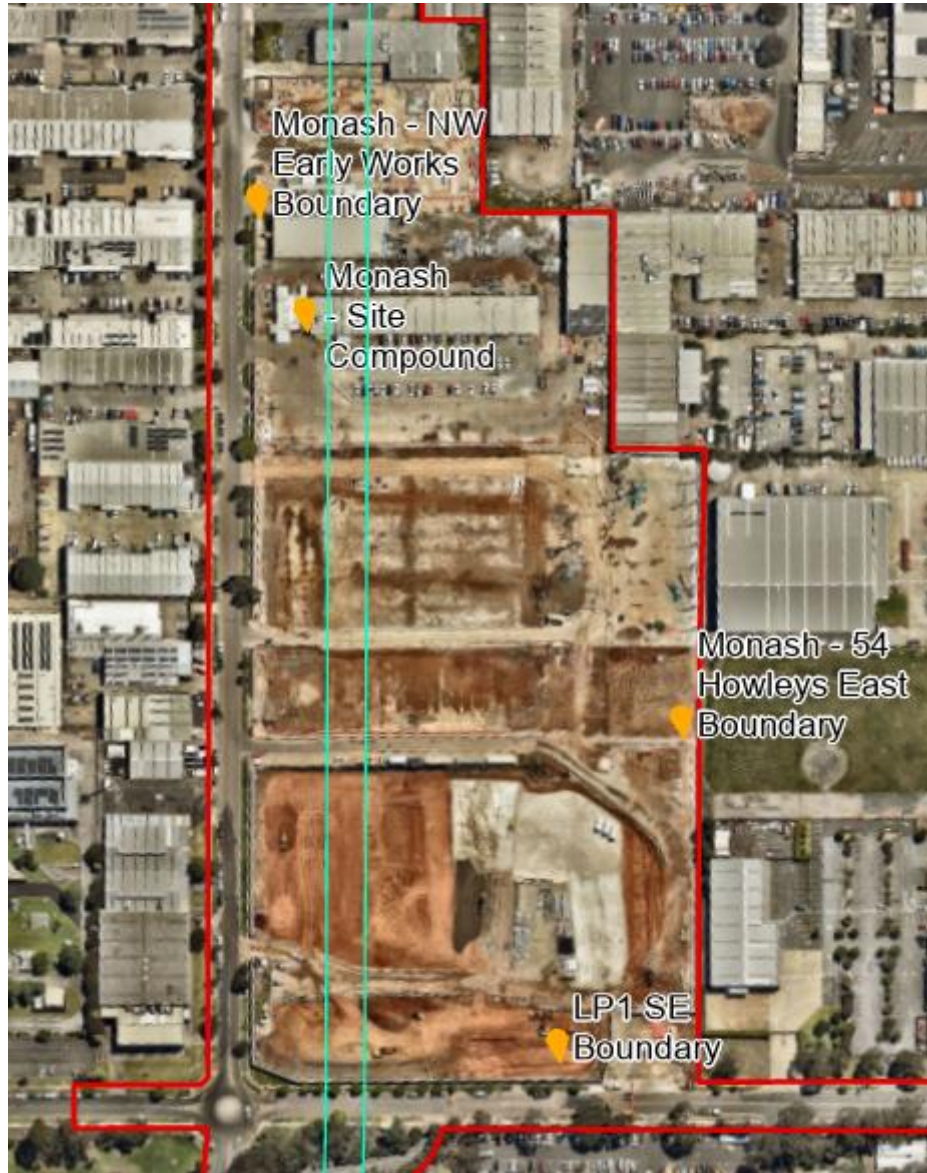
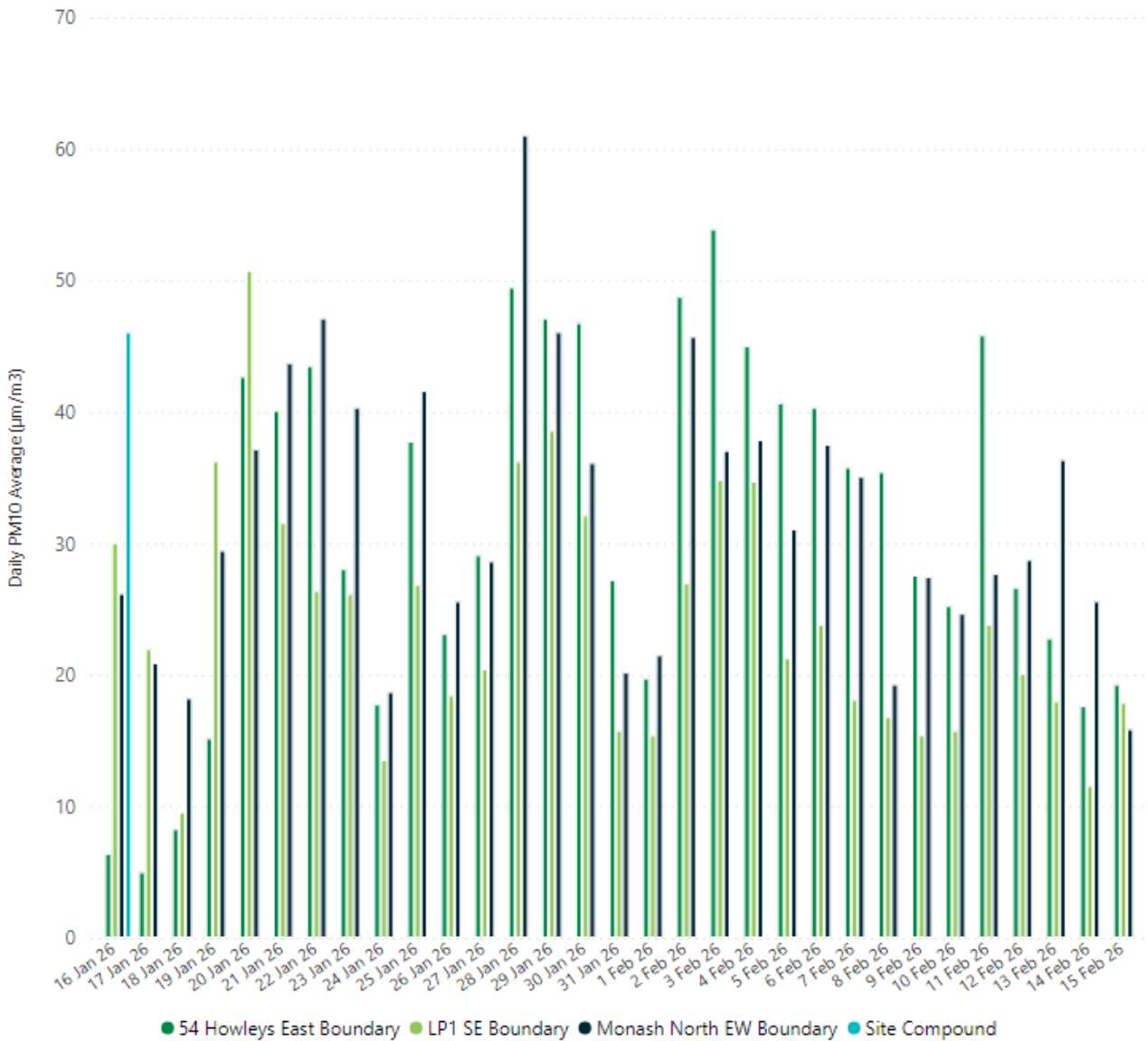


Figure 9: Monash air quality monitoring stations

Table 7: Monash PM<sub>10</sub> Results

Location	Parameter	Averaging Period	Max Concentration (µg/m <sup>3</sup> )	Median Concentration (µg/m <sup>3</sup> )	Days TARP Triggered in the Month	Days TARP Actions Implemented in the Month
<b>Representative Background Locations</b>						
Dandenong	PM <sub>10</sub>	24-hour	82.2	29.5	-	-
<b>Monash</b>						
54 Howleys East Boundary	PM <sub>10</sub>	24-hour	53.9	29.1	11	1

Location	Parameter	Averaging Period	Max Concentration (µg/m <sup>3</sup> )	Median Concentration (µg/m <sup>3</sup> )	Days TARP Triggered in the Month	Days TARP Actions Implemented in the Month
North EW Boundary	PM <sub>10</sub>	24-hour	61.1	29.5	3	0
LP1 SE Boundary	PM <sub>10</sub>	24-hour	50.8	22.0	3	0
Monash Site Compound	PM <sub>10</sub>	24-hour	46.1	46.1	1	0



**Figure 10: Daily Averages PM<sub>10</sub> Results at Monash**

### 3.5.1 Analysis

Measures implemented to proactively manage dust on this site include water carts and street sweepers. In addition, daily observations by supervisors and environmental representatives are performed to respond to areas of concern. Visual air inspections are also undertaken to proactively monitor and confirm there were no off-site dust impacts due to construction activities on site and to mitigate any interruptions to monitoring equipment. The TARP was triggered on fourteen days during the reporting period.

Three elevated daily average PM<sub>10</sub> events above 50 µg/m<sup>3</sup> occurred at the 54 Howleys East Boundary monitor, the LP1 SE Boundary monitor and the North EW Boundary monitor during the reporting period. Investigations determined the elevated levels were attributed to extreme weather conditions and works occurring in close proximity of the monitors, which was not representative of the actual dust levels on site. Dust management measures were confirmed to be active and sufficient for the activities on site.

Due to dry dusty conditions and works occurring in close proximity of the monitor, TARP actions were implemented on 3 February 2026 including increased frequency of water cart operation and redirection of trucks to other activities on site was implemented to reduce dust generation.

The Site Compound monitor was relocated to the North EW Boundary location on 16 January 2026 due to demolition of the buildings at the North Boundary.

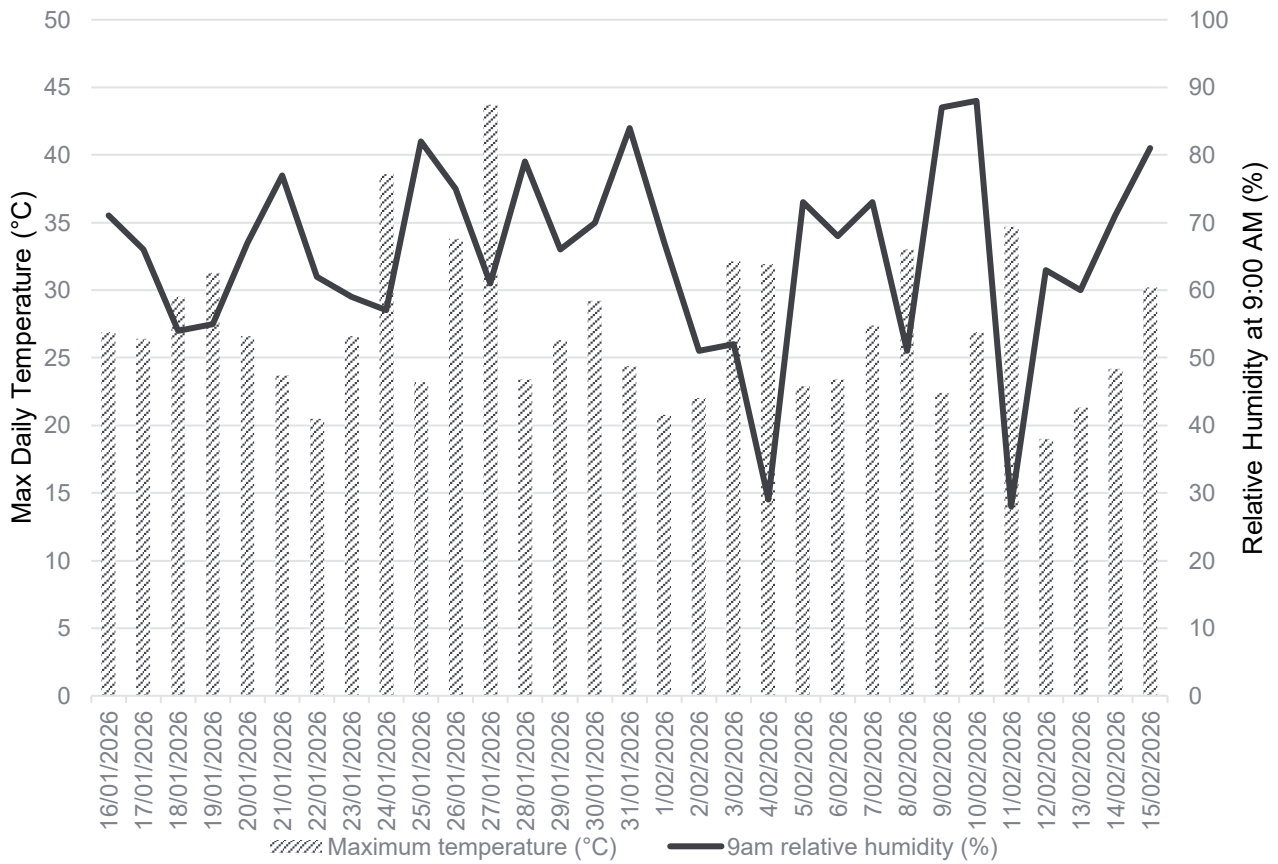
## 3.6 Meteorological Conditions

**Table 8: Daily weather observations for Moorabbin, Victoria**

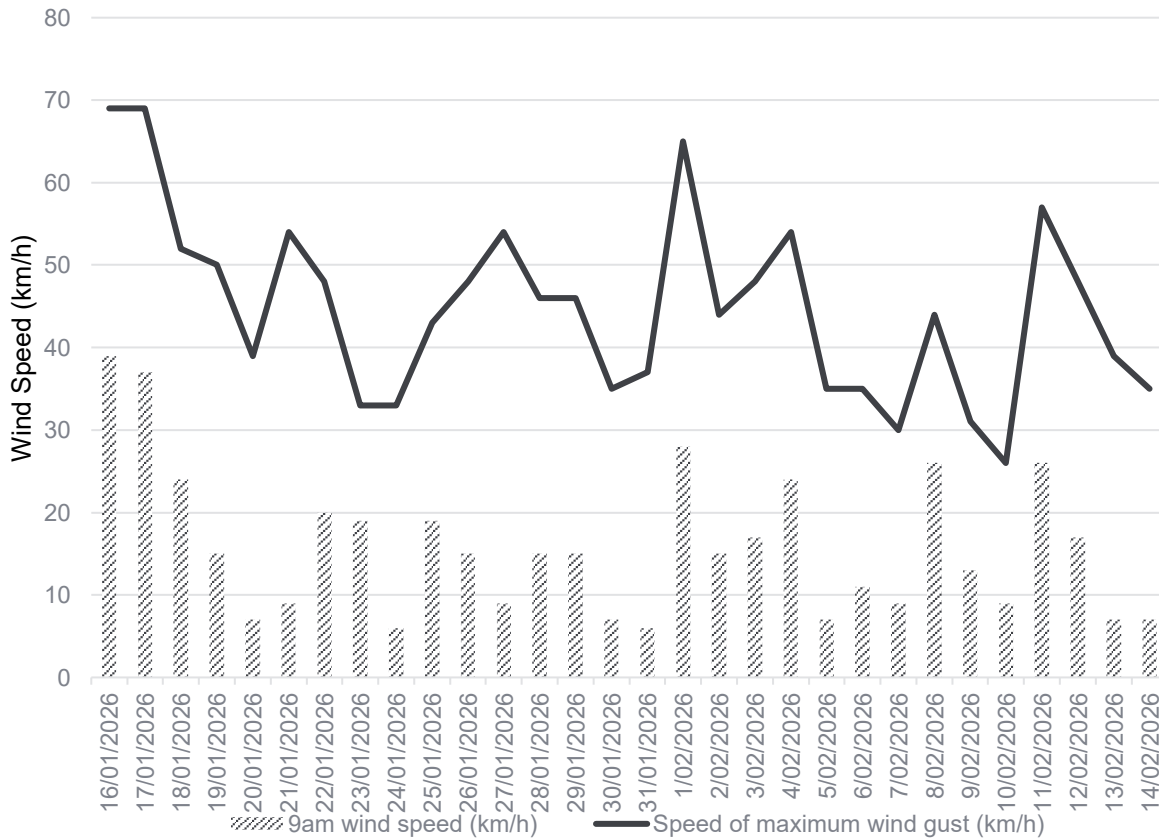
Statistic	Min Temperature (°C)	Max Temperature (°C)	Maximum Wind Gust Direction	Maximum Wind Gust Speed (km/h)	Relative Humidity @ 9:00 AM (%)
Mean	14.4	27.3	N/A	44.8	65.4
Lowest	8.4	19.0	SW	26	28
Highest	19.8	43.7	ESE	69	88

**Table 9: Daily rain data for Moorabbin, Victoria**

Statistic	Rain (mm)
Daily Low	0
Daily High	11.6
Total	19



**Figure 11: Daily relative humidity and temperature observations for Moorabbin, Victoria**



**Figure 12: Daily wind speed observations for Moorabbin, Victoria**

# 4 Quality Assurance

## 4.1 Data Capture

Data capture is defined as the number of valid data periods collected divided by the number of available data periods. Valid data excludes period where the instrument is unavailable due to calibration and maintenance and excludes periods where the data has been rejected due to quality assurance/data validation procedures. Data capture statistics for the reporting period 16 January to 15 February 2026 are shown below.

**Table 10: Daily PM<sub>10</sub> Air Quality Monitoring Data Capture**

Location	Available Periods	Collected Periods	Data Capture	Details
<b>Train Stabling Facility West</b>				
Linear Reserve North	31	31	100%	There were no interruptions to monitoring at this location during the reporting period.
South	31	29	94%	Monitor was offline for two days due to a technical error. There were no interruptions to monitoring at this location for the remainder of the reporting period.
<b>Clarinda TBM launch site</b>				
CC01	31	31	100%	There were no interruptions to monitoring at this location during the reporting period
CC08	31	28	90%	Monitor was offline for three days due to a technical error. There were no interruptions to monitoring at this location for the remainder of the reporting period.
South Boundary	31	31	100%	There were no interruptions to monitoring at this location during the reporting period.
<b>Clayton</b>				
Central	31	31	100%	There were no interruptions to monitoring at this location during the reporting period.
East	19	19	100%	There were no interruptions to monitoring at this location during the reporting period. Monitor was relocated to the North West location and replaced the existing monitor there on 3 February 2026.
North West	31	31	100%	There were no interruptions to monitoring at this location during the reporting period.
South	31	31	100%	There were no interruptions to monitoring at this location during the reporting period.
<b>Monash</b>				
54 Howleys East Boundary	31	31	100%	There were no interruptions to monitoring at this location during the reporting period.

Location	Available Periods	Collected Periods	Data Capture	Details
North EW Boundary	31	31	100%	There were no interruptions to monitoring at this location during the reporting period.
LP1 SE Boundary	31	31	100%	There were no interruptions to monitoring at this location during the reporting period.
Monash Site Compound	1	1	100%	Monitor was relocated to the North EW Boundary location on 16 January 2026.
<b>Cheltenham</b>				
North	12	12	100%	Monitoring location was established on 4 February 2026. There were no interruptions to monitoring at this location during the reporting period.

## 4.2 Data Validation

Data contained in this report has been validated against performance and calibration requirements for each instrument. Data during commissioning, maintenance and calibration periods has been removed from the validated data sets.

**Table 11: Monitoring device calibration information**

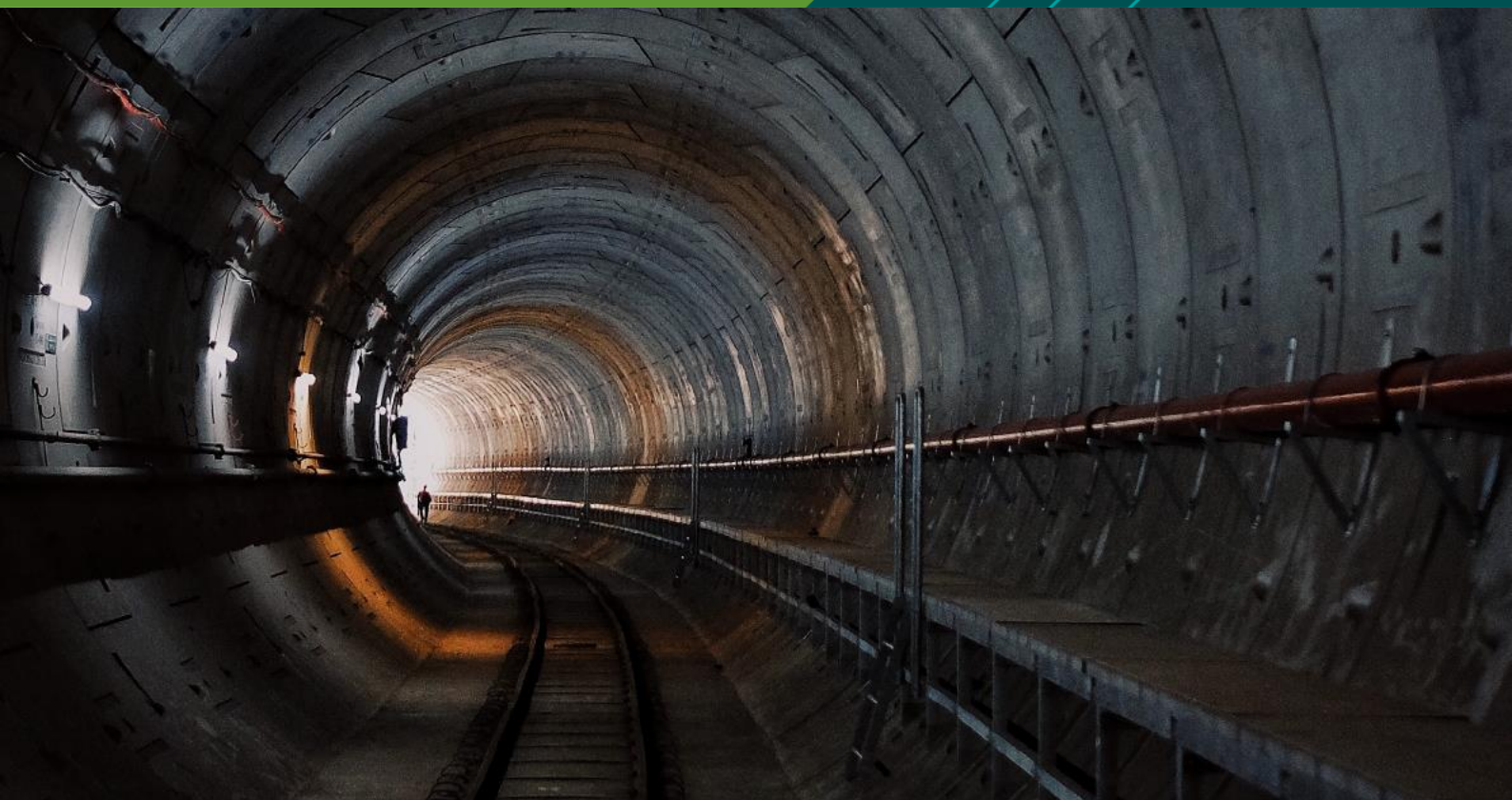
Location	Device Serial Number	Calibration Date	Calibration Due
<b>Train Stabling Facility West</b>			
South	HEX-000498	20 Sep 2024	20 Sep 2026
Linear Reserve North	HEX-000706	19 Feb 2025	19 Feb 2027
<b>Clarinda</b>			
South Boundary	HEX-000348	19 Feb 2025	19 Feb 2027
CC08	HEX-000780	18 Dec 2024	18 Dec 2026
CC01	HEX-000626	19 Feb 2025	19 Feb 2027
<b>Clayton</b>			
Central	HEX-000203	19 Mar 2025	19 Mar 2027
East	HEX-001162	29 Sep 2025	29 Sep 2027
North West	HEX-000623	19 Feb 2025	19 Feb 2027

Location	Device Serial Number	Calibration Date	Calibration Due
South	HEX-000782	23 Jul 2025	23 Jul 2027
<b>Monash</b>			
54 Howleys East Boundary	HEX-000536	08 Dec 2025	08 Dec 2027
North EW Boundary	HEX-000727	14 Nov 2025	14 Nov 2027
LP1 SE Boundary	HEX-000400	08 Dec 2025	08 Dec 2027
Monash Site Compound	HEX-000727	14 Nov 2025	14 Nov 2027
<b>Cheltenham</b>			
North	HEX-000298	23 Jul 2025	23 Jul 2027

# Glossary

Term / Abbreviation	Definition
$\mu\text{g}/\text{m}^3$	micrograms per cubic metre is a unit of measurement used to measure the mass of air pollutants (micrograms) per volume of air (cubic metre) as a concentration.
EAQDMP	The Environmental Air Quality and Dust Management Plan (EAQDMP) is environmental management documentation prepared by the PC to manage and monitor air quality impacts during construction of SRL East. It includes the RMMP and TARP and is verified by the IEA.
EES	Environment Effects Statement (EES) in Victoria, environment assessment of the potential environmental impacts or effects of a proposed development under the Environment Effects Act 1978.
EMF	The Environmental Management Framework (EMF) provides a transparent and integrated framework to manage environmental effects of the SRL East Project during construction and operation to achieve acceptable environmental outcomes.
EPA	Environment Protection Authority (EPA) is the Victorian regulator established under the Environment Protection Act 2017 and which has the statutory objective to protect human health and the environment from the harmful effects of pollution and waste.
EPRs	The Environmental Performance Requirements (EPRs) define the environmental outcomes that must be achieved during the design, construction and operation of SRL East and are included within the EMF.
ERS	The Environmental Reference Standard (ERS) is a tool made under the Environment Protection Act 2017 to identify and assess environmental values, including air quality, in Victoria.
IEA	The Independent Environmental Auditor (IEA) is appointed by the Victorian Government to undertake independent environmental reviews and audits of project activities including assessing compliance with the EMF and EPRs.
PC	Principal Contractor
PM <sub>10</sub>	Particulate matter with an aerodynamic diameter of 10 micrometres ( $\mu\text{m}$ ) or less. PM <sub>10</sub> particles are small enough to have a potential impact on human health.
RMMP	The Risk Management and Monitoring Program (RMMP) plan outlines the approach to air quality monitoring and includes instrumental, visual monitoring, TARP and public reporting processes. The RMMP forms part of the EAQDMP.
TARP	The Trigger Action Response Protocol (TARP) defines a series of adaptive management measures that are implemented to avoid or mitigate impacts from dust emissions for nearby sensitive receptors in response to the results from monitoring. The TARP forms part of the EAQDMP.
TARP Triggered during the reporting month	This refers to the number of days TARP trigger criteria or the Air Quality Objective was exceeded during the reporting month.
TARP actions implemented during the reporting month	This refers to the number of days additional TARP mitigation measures or actions were required to be implemented as a response to project related exceedances. These actions are in addition to existing controls implemented on site.

# TERRAVERDE



## SUBURBAN RAIL LOOP EAST Tunnels North

# Air Quality Monthly Report 16 Jan – 15 Feb 2026

SRL-WPD-TVC-NAP-REP-XLP-PWD-000006 Rev C

23 March 2026



## Version control and record

Version	Date	Comments
A	04/03/2026	Report Issued to SRLA
B	12/03/2026	To address SRLA comments
C	23/03/2026	To address SRLA comments

## Contents

<b>Version control and record</b> .....	<b>i</b>
<b>Glossary</b> .....	<b>iii</b>
<b>Executive Summary</b> .....	<b>4</b>
<b>1. Introduction</b> .....	<b>5</b>
1.1 SRL East.....	5
1.2 Environmental Management Framework.....	6
<b>2. Air Quality Monitoring</b> .....	<b>6</b>
2.1 Context.....	6
2.2 Purpose.....	6
2.3 Monitoring Locations.....	7
2.4 Data Limitations and Verification.....	7
<b>3. Results</b> .....	<b>8</b>
3.1 ESF.....	8
3.2 BURWOOD.....	11
3.3 Meteorological Conditions.....	13
<b>4. Quality Assurance</b> .....	<b>15</b>
4.1 Data Capture.....	15
4.2 Data Validation.....	15

## Glossary

Term	Definition
$\mu\text{g}/\text{m}^3$	micrograms per cubic metre is a unit of measurement used to measure the mass of air pollutants (micrograms) per volume of air (cubic metre) as a concentration.
<b>BUW</b>	Burwood site compound
<b>EAQDMP</b>	The Environmental Air Quality and Dust Management Plan (EAQDMP) is environmental management documentation prepared by the PC to manage and monitor air quality impacts during construction of SRL East. It includes the RMMP and TARP and is verified by the IEA.
<b>EES</b>	Environment Effects Statement (EES) in Victoria, environment assessment of the potential environmental impacts or effects of a proposed development under the Environment Effects Act 1978.
<b>EMF</b>	The Environmental Management Framework (EMF) provides a transparent and integrated framework to manage environmental effects of the SRL East Project during construction and operation to achieve acceptable environmental outcomes.
<b>EPA</b>	Environment Protection Authority (EPA) is the Victorian regulator established under the Environment Protection Act 2017 and which has the statutory objective to protect human health and the environment from the harmful effects of pollution and waste.
<b>EPRs</b>	The Environmental Performance Requirements (EPRs) define the environmental outcomes that must be achieved during the design, construction and operation of SRL East and are included within the EMF.
<b>ERS</b>	The Environmental Reference Standard (ERS) is a tool made under the Environment Protection Act 2017 to identify and assess environmental values, including air quality, in Victoria.
<b>ESF</b>	Emergency Support Facility
<b>IEA</b>	The Independent Environmental Auditor (IEA) is appointed by the Victorian Government to undertake independent environmental reviews and audits of project activities including assessing compliance with the EMF and EPRs.
<b>PC</b>	Principal Contractor
<b>PM<sub>10</sub></b>	Particulate matter with an aerodynamic diameter of 10 micrometres ( $\mu\text{m}$ ) or less. PM <sub>10</sub> particles are small enough to have a potential impact on human health.
<b>RMMP</b>	The Risk Management and Monitoring Program (RMMP) plan outlines the approach to air quality monitoring and includes instrumental, visual monitoring, TARP and public reporting processes. The RMMP forms part of the EAQDMP.
<b>SRL</b>	Suburban Rail Loop
<b>TARP</b>	Trigger Action Response Protocol
<b>TARP Triggered during the month</b>	Refers to the number of days TARP trigger criteria or the Air Quality Objective was exceeded during the reporting month.
<b>TARP actions implemented during the reporting month</b>	Refers to the number of days additional TARP mitigation measures or actions were required to be implemented as a response to project related exceedances. These actions are in addition to existing controls implemented on site.
<b>TV</b>	Terra Verde

## Executive Summary

### Key Outcomes

Key outcomes arising from the monthly air quality monitoring program:

- All instances of elevated PM<sub>10</sub> levels were investigated and additional controls implemented, where required.
- TARP Levels 1, 2 and 3 were triggered across both sites during the reporting period. In response, additional dust suppression measures were implemented. The EPA also reported poor air quality across Melbourne during this period, which may have contributed to the elevated readings.
- A proactive response was undertaken, including the deployment of additional dust suppression controls, to ensure there were no off-site dust impacts.

### Purpose of the Report

This report presents the results of the monthly review of the air quality monitoring data for each Suburban Rail Loop (SRL) East main works construction site for the period between 16 January 2026 – 15 February 2026 in accordance with SRL East EMF and EPRs AQ1 and AQ2.

Tunnels North works for SRL East commenced at the ESF, 601 High Street Road, Mount Waverley, on 30 June 2025, and at the Burwood site, 200 Burwood Highway, on 30 September 2025. Terra Verde (TV) is delivering the Tunnels North works as the Principal Contractor (PC).

The PC implements an air quality monitoring program on each site that includes both visual observation and instrumental air quality monitoring. The purpose of the air quality monitors is to measure the concentration of small dust particles in the air near the construction site. These particles, known as PM<sub>10</sub> have the potential to impact human health. PM<sub>10</sub> refers to particles with an aerodynamic diameter of 10 µm or less.

This report compares the measured concentrations to air quality objectives that are defined in the ERS which is a tool under the Environment Protection Act 2017. The ERS sets out the air quality objectives for PM<sub>10</sub> which are measured over a 24-hour averaging period and are shown in Table 1 below. The objectives are risk-based concentrations that are not intended to be compliance levels, but they assist the PC to understand the risk to human health. When the instrumental monitor and/or visual observations identify a change in site conditions this prompts the PC to take actions on site to reduce dust impacts, and review mitigation measures applied.

### Scope of Reporting

Site activities and operations undertaken on the ESF site during the month included:

- Excavation works
- General works, unloading delivery materials and housekeeping works
- Capping Beam
- Steel Fixing
- Piling works

Site activities and operations undertaken on the BUW site during the month included:

- STAS works
- TBM assembly & heavy lift beam foundation
- Installation of new offices
- Drainage installation
- Hard and soft piling works
- Acoustic Shed erection
- Spoil Bay erection

## Results

The key findings are summarised in Table 1. An analysis of these findings is provided in Section 3.

Table 1: Summary of air quality monitoring results

Location	Parameter	Avg Period	Max Conc. ( $\mu\text{g}/\text{m}^3$ )	Median Conc. ( $\mu\text{g}/\text{m}^3$ )	Air Quality Objective ( $\mu\text{g}/\text{m}^3$ )	Days TARP Triggered in the Month	Days TARP Actions Implemented in the Month
<b>Representative Background Locations</b>							
EPA - Alphington	PM <sub>10</sub>	24-hour	57	22.8	NA	N/A	N/A
EPA Dandenong	PM <sub>10</sub>	24-hour	81.7	29.2	NA	N/A	N/A
<b>Mount Waverley - ESF</b>							
ESF Northwest	PM <sub>10</sub>	24-hour	51.9	33.1	50	4	4
ESF Southwest	PM <sub>10</sub>	24-hour	66.9	19.6	50	3	3
<b>Burwood- BUW</b>							
BUW East	PM <sub>10</sub>	24-hour	51.0	24.1	50	6	6
BUW South	PM <sub>10</sub>	24-hour	55.2	26.8	50	9	9

### Notes:

The ESF Southwest monitor was offline from 22 January to 2 February due to firmware issues. The monitor was swapped over on 2 February.

EPA Alphington reported a daily average PM<sub>10</sub> exceedance of 57  $\mu\text{g}/\text{m}^3$  on 25 January. Review of EPA Dandenong monitoring data also identified a daily average PM<sub>10</sub> exceedance of 81.7  $\mu\text{g}/\text{m}^3$  on 16 January. These exceedances indicate that elevated particulate levels were present regionally during the reporting period

## 1. Introduction

### 1.1 SRL East

Suburban Rail Loop (SRL) will deliver a 90km orbital rail line connecting Melbourne's middle suburbs, linking every major train service from the Frankston Line to the Werribee Line via Melbourne Airport and transforming our public transport network.

SRL East from Cheltenham to Box Hill is now in major construction. The new rail line will connect major employment, health, education and retail destinations in Melbourne's east and south east, slashing travel times, reducing congestion and connecting passengers travelling on the Gippsland corridor to destinations across Melbourne.

Tunnels North works for SRL East commenced at the ESF site (601 High Street Road, Mount Waverley) on 30 June 2025, and at the Burwood site compound (200 Burwood Highway) on 29 September 2025. TV is delivering the Tunnels North works as PC. The works will involve shaft excavation to enable ventilation and other support of tunnelling activity.

## 1.2 Environmental Management Framework

The EMF for SRL East provides a transparent and integrated framework to manage environmental effects of the Project and includes EPRs that define environmental outcomes that must be achieved during the design, construction, and operation phases of the Project. The EMF is available on the SRL East website at <https://bigbuild.vic.gov.au/library/suburban-rail-loop/planning/srl-east-environmental-management-framework>.

The development of the EMF has been informed by relevant legislation, policy and guidelines, and the specialist impact assessment studies completed for the SRL EES and the Minister's Assessment, dated 5 August 2022.

The EMF requires the PC to develop and implement an EAQDMP. As part of implementing this document plan, the PC is required to conduct monitoring of PM<sub>10</sub> concentrations and measure wind speed and direction at each Early Works construction site and at a representative control site. The EAQDMP also includes a TARP which defines a set of proactive and reactive triggers that prompt actions on site to reduce dust impacts, and review mitigation measures applied.

The PC regularly reviews the monitoring data at each site, for the purpose of assessing the effectiveness of EAQDMP implementation. The verified results of the PM<sub>10</sub> monitoring for the applicable monthly period are contained in this report, which will be available to the public, in accordance with the requirements of the EMF.

## 2. Air Quality Monitoring

### 2.1 Context

Maintaining air quality is important for public health, the liveability of our cities and our environment. Overall air quality conditions in Melbourne are good, however like all major cities, there are days where the background concentrations of air pollutants are very high on a regional basis. Sometimes these elevated concentrations are due to regional influences such as windblown continental dust, bushfires or hazard reduction burns. Emissions from traffic, home heating, and industrial emissions across Melbourne can also cause high background concentrations, especially when the weather is calm. EPA monitoring stations measure these background levels of pollution that already exist in the air within the surrounding area.

The EPA monitoring station at Alphington is used as the representative control site for the ESF and Burwood site.

Without effective management, construction of SRL East has the potential to contribute to these background concentrations which may impact public health. Comparison of SRL East monitoring results with publicly available EPA monitoring data is used by the PC to identify when construction-related activities are impacting local air quality, and conversely when the local air quality results may be influenced by background conditions outside of the influence of the construction site.

Meteorological conditions such as wind direction and speed can impact on the dispersion of particulates in the air and by monitoring these, the PC can respond when conditions on site change. Having records of wind conditions is also helpful for retrospectively identifying the activity that is causing any elevated dust concentrations.

### 2.2 Purpose

The purpose of the air quality monitors is to measure the concentration of small dust particles in the air near the construction site. These particles, known as PM<sub>10</sub> have the potential to impact human health. PM<sub>10</sub> refers to particles with an aerodynamic diameter of 10 µm or less.

The measured concentrations are compared to air quality objectives that are defined in the ERS which is a tool under the Environment Protection Act 2017. The air quality objectives defined in the ERS informed the objectives for air quality for SRL East, noting that the ambient air ERS is not a compliance standard that one can pollute up to. The ERS does not provide an indicator or objective for nuisance dust.

The objectives are risk-based concentrations that are not intended to be compliance levels, but they assist the PC to understand the risk to human health. The ERS sets out the air quality objectives for PM<sub>10</sub> which are measured over a 24-hour averaging period, as reproduced below in Table 2.

Table 2: Ambient air quality objectives for PM<sub>10</sub>

Indicator	Air Quality Objective (µg/m <sup>3</sup> )	Averaging Period
Indicator Particles as PM <sub>10</sub> (maximum concentration)	50	24-hour

The measured concentrations (which include both existing background concentrations and SRL East's incremental contribution over a 24-hour period) are presented in Section 3 and compared against the air quality objective. Monitoring is continuous, even when there are no construction-related activities occurring on the site. Periods of time where there are no site activities are classified as 'out of hours'. The potential for dust generation from the work sites is much lower when there are no site activities occurring, however dust can still be generated at the work site during 'out of hours' periods due to wind erosion.

## 2.3 Monitoring Locations

Air quality monitors are located on or adjacent to the construction sites, to represent local air quality conditions, in positions that enable the PC to adequately measure potential impact of works on local sensitive receivers including residents.

The air quality monitors were installed on the following dates at each of the following locations. The location of these monitors is shown on maps in Section 3 of this Report.

Table 3: Air quality monitoring locations active during reporting period

Monitoring Location	Date Commissioned	Coordinates	Monitoring Parameters	Representative Control Site
Mount Waverley – ESF northwest	30 June 2025	Latitude: -37.87036 ° Longitude: 145.14550 °	PM <sub>10</sub>	Alphington EPA monitoring station
Mount Waverley – ESF southwest	30 June 2025	Latitude: -37.87067 ° Longitude: 145.14543 °	PM <sub>10</sub>	Alphington EPA monitoring station
Burwood Site Compound -BUW East	29 September 2025	Latitude: -37.85067 ° Longitude: 145.1122 °	PM <sub>10</sub>	Alphington EPA monitoring station
Burwood Site Compound -BUW South	2 October 2025	Latitude: -37.85232 ° Longitude: 145.11106 °	PM <sub>10</sub>	Alphington EPA monitoring station

## 2.4 Data Limitations and Verification

The following limitations apply to this data:

- Meteorological conditions on site can affect measurements made by monitoring devices. For instance, dust measurements can be impacted by rainfall, fog and/or humidity (with water droplets in the air being mistaken as dust particles). Displaying periods of inclement weather allows reviewers to identify measurements that may have been impacted.

## 3. Results

Figure 1 shows the location of the ESF air quality monitoring stations. Data has been provided in tabular and graphical form (see Table 4 and Figure 2) to visually present 24-hour averages of PM<sub>10</sub> over the monthly period. The data included in this report has been verified by Terra Verde and relevant subject matter experts.

### 3.1 ESF

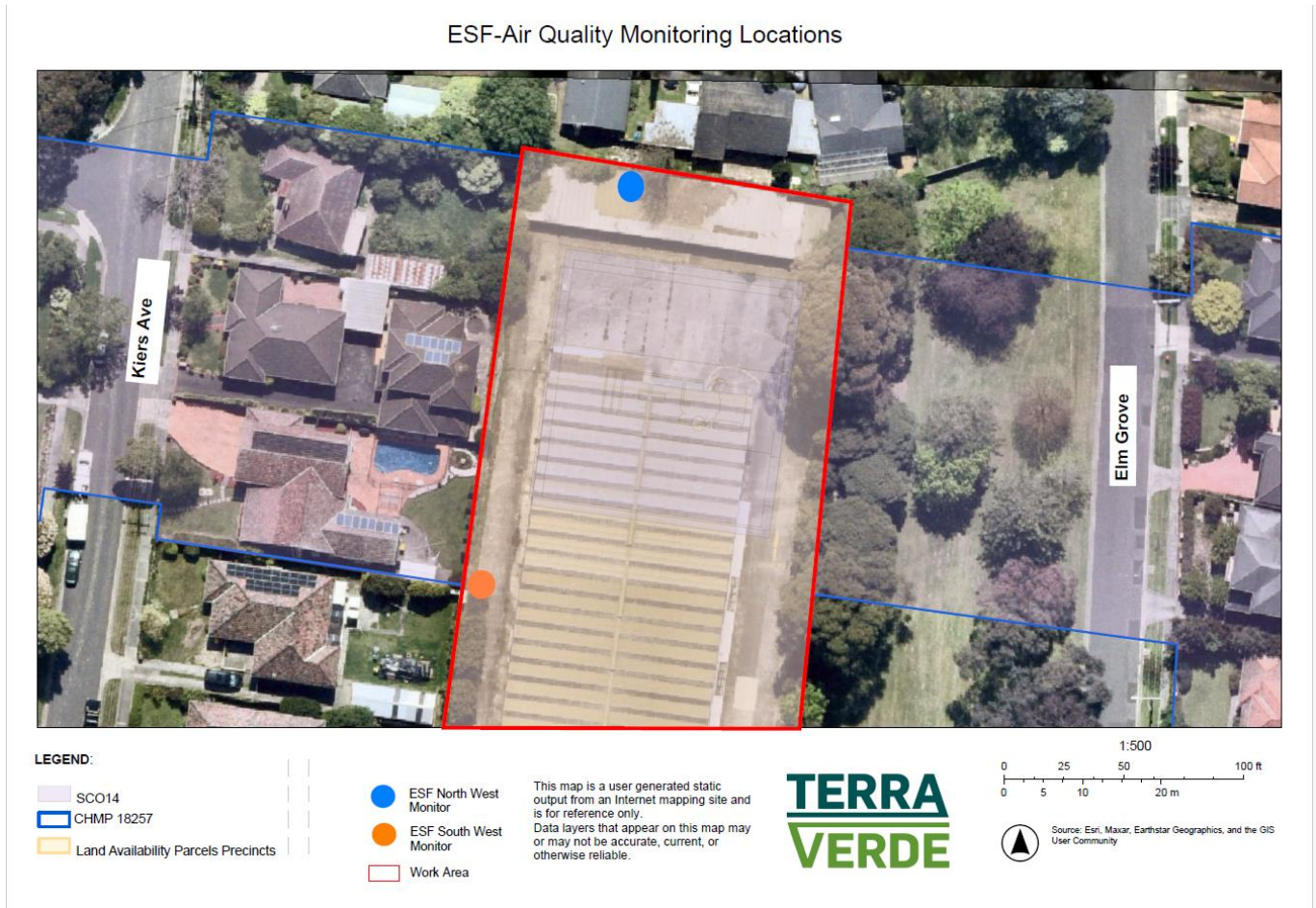


Figure 1: ESF air quality monitoring stations

Monitor Number	Monitoring Location	Max Daily PM <sub>10</sub> Concentration (µg/m <sup>3</sup> )	Median Daily PM <sub>10</sub> Concentration (µg/m <sup>3</sup> )	Air Quality Objective (µg/m <sup>3</sup> )	Days TARP Triggered in the Month	Days TARP Actions Implemented in the Month
-	Representative Background – Alphington EPA monitoring station	57	22.8	N/A	N/A	N/A
-	Representative Background – Dandenong EPA monitoring station	81.7	29.2	N/A	N/A	N/A

Monitor Number	Monitoring Location	Max Daily PM <sub>10</sub> Concentration (µg/m <sup>3</sup> )	Median Daily PM <sub>10</sub> Concentration (µg/m <sup>3</sup> )	Air Quality Objective (µg/m <sup>3</sup> )	Days TARP Triggered in the Month	Days TARP Actions Implemented in the Month
1	Mount Waverley ESF Northwest	51.9	33.1	50	4	4
2	Mount Waverley ESF Southwest	66.9	19.6	50	3	3

Table 4: ESF PM<sub>10</sub> results

Notes: The ESF Southwest monitor was offline from 22 January to 2 February due to firmware issues. The monitor was swapped over on 2 February

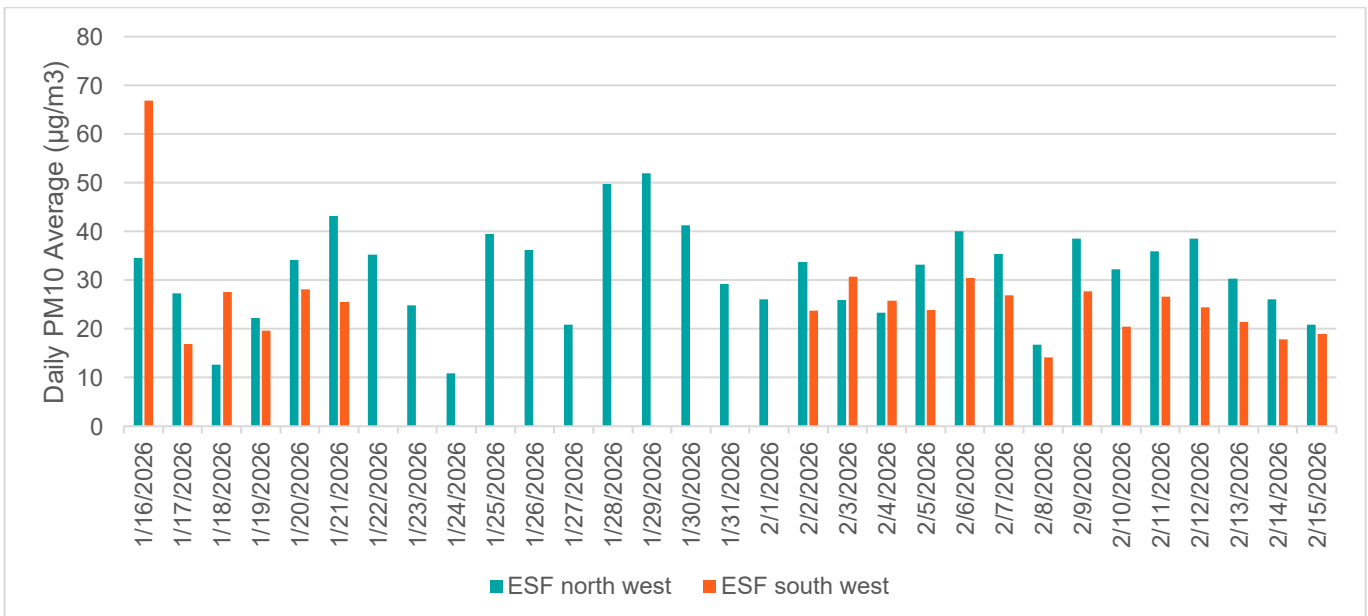


Figure 2: ESF PM<sub>10</sub> daily averages from 16 January to 15 February

### 3.1.1 Daily Objective Analysis

A daily average above the objective was recorded during the reporting period. The maximum daily average was 66.9 µg/m<sup>3</sup> at the ESF Southwest monitor on 16 January. A proactive visual inspection was undertaken on the day. Dry site conditions and winds travelling East–South-East were present.

Elevated particulate levels coincided with regional bushfire smoke events affecting Victoria, and an exceedance was also recorded at the EPA Dandenong monitoring station (81.7 µg/m<sup>3</sup>) on the same day. These regional smoke conditions likely contributed to the increased PM<sub>10</sub> concentrations recorded by the site monitoring equipment.

No dust was observed leaving the site, and ongoing dust suppression measures were implemented, including the use of hoses in the piling work areas.

### 3.1.2 ESF TARP Analysis

The TARP uses the continuous data from the on-site PM<sub>10</sub> monitors to enable short-term, proactive and reactive air quality management. Alert values are set at three 'levels' in response to PM<sub>10</sub> concentrations:

- Level 1 – Preventive Alert Level: investigate and prepare.

- Level 2 – Preventive Action Level: action required.
- Level 3 – Trigger Level: further action and changes to operations required.

TARP Level 1 was triggered on three separate days (16 and 21 January, and 4 February) at the ESF Southwest monitor. TARP Level 2 was triggered on one day (16 January). In response, additional dust suppression measures were implemented, including the use of water hoses during piling works.

During the Level 2 trigger event, high wind conditions were recorded at the time of the alert. Dust suppression was applied prior to the completion of works, and no construction activities were occurring at the time the alert was received.

TARP Level 1 was triggered on two occasions (16 and 29 January) at the Northwest monitor. TARP Level 3 was triggered on 11 February. Following each trigger, the relevant work areas were inspected, and dust suppression measures were implemented. During the Level 3 event, temporary stockpiling activities were occurring in proximity to the Northwest monitor. Works were temporarily paused, and additional dust suppression measures were applied, including the use of water hoses during piling activities.

It is also noted that during this reporting period, the EPA reported very poor air quality across Melbourne in January due to bushfire activity. The elevated PM10 levels recorded during this period are consistent with regional bushfire smoke impacts, as reported by the EPA, indicating that broader air quality conditions likely contributed to the monitored results at site.

## 3.2 BURWOOD



Figure 3. BUW air quality monitoring stations

Monitor Number	Monitoring Location	Max Daily PM <sub>10</sub> Concentration (µg/m <sup>3</sup> )	Median Daily PM <sub>10</sub> Concentration (µg/m <sup>3</sup> )	Air Quality Objective (µg/m <sup>3</sup> )	Days TARP Triggered in the Month	Days TARP Actions Implemented in the Month
-	Representative Background – Alphington EPA monitoring station	57	22.8	N/A	N/A	N/A
-	Representative Background – Dandenong	81.7	29.2	N/A	N/A	N/A

Monitor Number	Monitoring Location	Max Daily PM <sub>10</sub> Concentration (µg/m <sup>3</sup> )	Median Daily PM <sub>10</sub> Concentration (µg/m <sup>3</sup> )	Air Quality Objective (µg/m <sup>3</sup> )	Days TARP Triggered in the Month	Days TARP Actions Implemented in the Month
	EPA monitoring station					
1	Burwood-BUW East	51.0	24.1	50	6	6
2	Burwood-BUW South	55.2	26.8	50	9	9

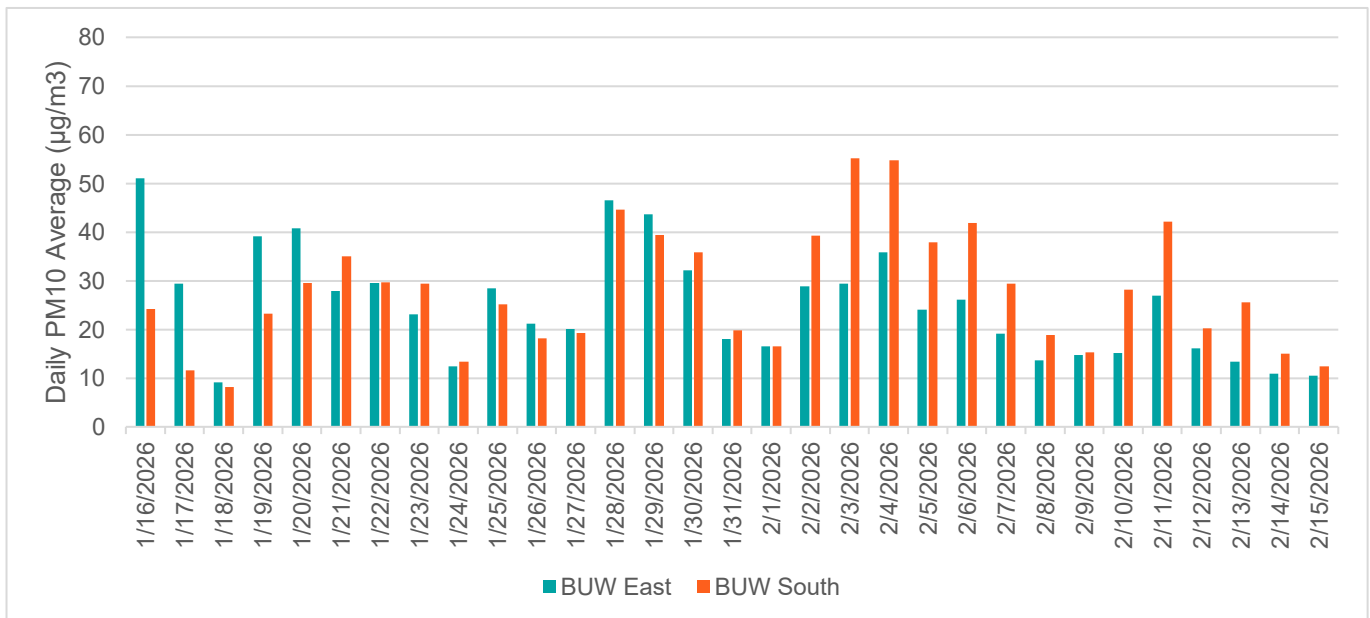


Figure 4. Burwood PM<sub>10</sub> daily averages from 16 January to 15 February

### 3.2.1 Daily Objective Analysis

No daily averages above the daily objective were recorded during the reporting period. The maximum daily average PM<sub>10</sub> concentration was 55.2 µg/m<sup>3</sup> at the BUW South monitoring location, dry conditions and movement of plant and equipment adjacent to the monitor likely contributed to the increased PM<sub>10</sub> concentrations recorded by site monitoring equipment. Proactive visual inspection was carried out, and dust controls were in place. Two water carts operate on site regularly and are called to specific areas as required.

### 3.2.2 – BUW TARP Analysis

The TARP uses the continuous data from the on-site PM<sub>10</sub> monitors to enable short-term, proactive and reactive air quality management. Alert values are set at three 'levels' in response to PM<sub>10</sub> concentrations:

- Level 1 – Preventive Alert Level: investigate and prepare.
- Level 2 – Preventive Action Level: action required.
- Level 3 – Trigger Level: further action and changes to operations required.

At BUW, TARP Level 1 was triggered on 12 different days (16, 17, 19, 20, 21, 28, 29 and 30 January, and 3, 4, 6 and 11 February), while TARP Level 2 was triggered on six different days (16, 17, 19, 28 and 29 January, and 3 February).

In response, proactive visual inspections were undertaken, and additional dust suppression measures were implemented, including the use of two water carts during TBM assembly area and piling works until conditions were back to normal.

TARP Level 3 was triggered on two occasions (16 and 19 January). At the time of the triggers, excavation works for a new drainage line were being undertaken adjacent to the BUW East monitor. Dry conditions were present on site, increasing the potential for dust generation. Dust control measures were implemented, including the deployment of two water carts covering the two active work fronts and the use of hoses in areas with more difficult access.

Two water trucks were deployed to wet down the affected areas until dust levels returned to acceptable levels and continued operating as required. Water hoses were also used across multiple excavation fronts to further control dust. No visible dust emissions were observed beyond the site boundary.

It is also noted that during this reporting period, the EPA reported very poor air quality across Melbourne in January due to bushfire activity. The elevated PM10 levels recorded during this period are consistent with regional bushfire smoke impacts, as reported by the EPA, indicating that broader air quality conditions likely contributed to the monitored results at site.

### 3.3 Meteorological Conditions

Table 5: Daily weather observations for Melbourne (Olympic Park), Victoria 16/01/2026 – 15/02/2026. Data Source BOM.

Statistic	Min Temperature (°C)	Max Temperature (°C)	Maximum Wind Gust Direction	Maximum Wind Gust Speed (km/h)	Relative Humidity @ 9:00 AM (%)
Mean	15.7	26.7	N/A	35.6	64.2
Lowest	10.9	19	S	20	32
Highest	20.4	42.7	SSW	57	86

Table 6: Daily rain data for Melbourne (Olympic Park Victoria 16/01/2026 – 15/02/2026. Data Source BOM.)

Statistic	Rain (mm)
Daily Low	0
Daily High	11.4
Total	15.6

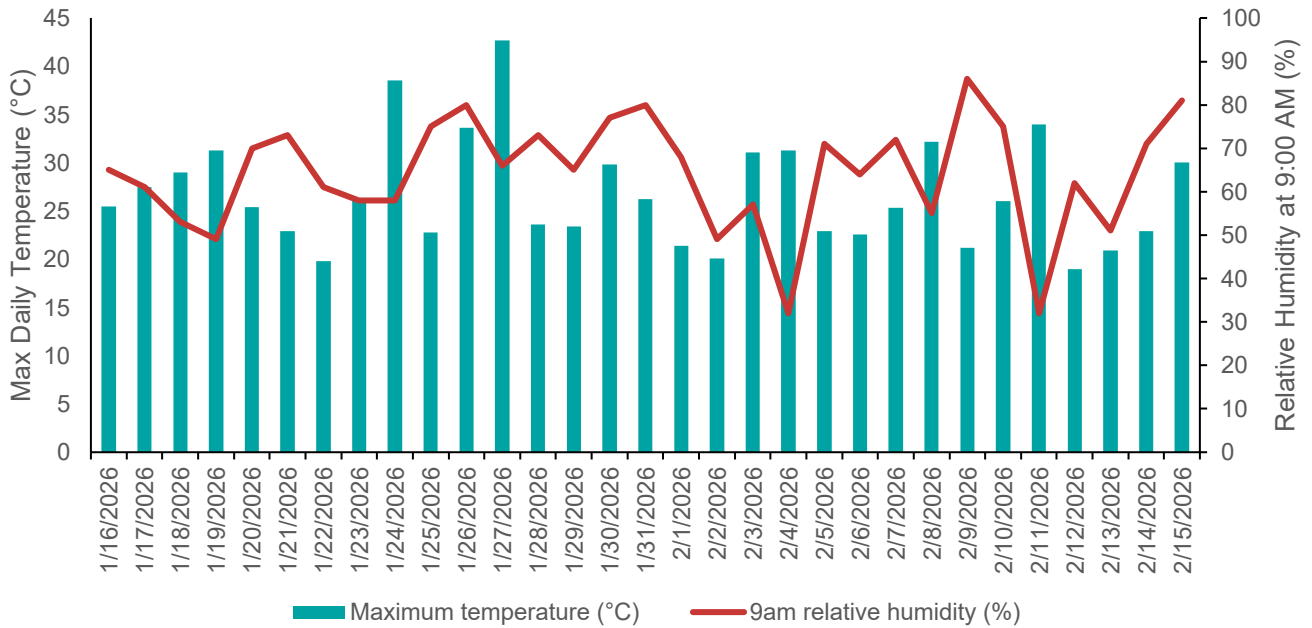


Figure 5: Daily relative humidity and temperature observations for Melbourne (Olympic Park), Victoria 16/01/2026 – 15/02/2026. Data Source BOM.

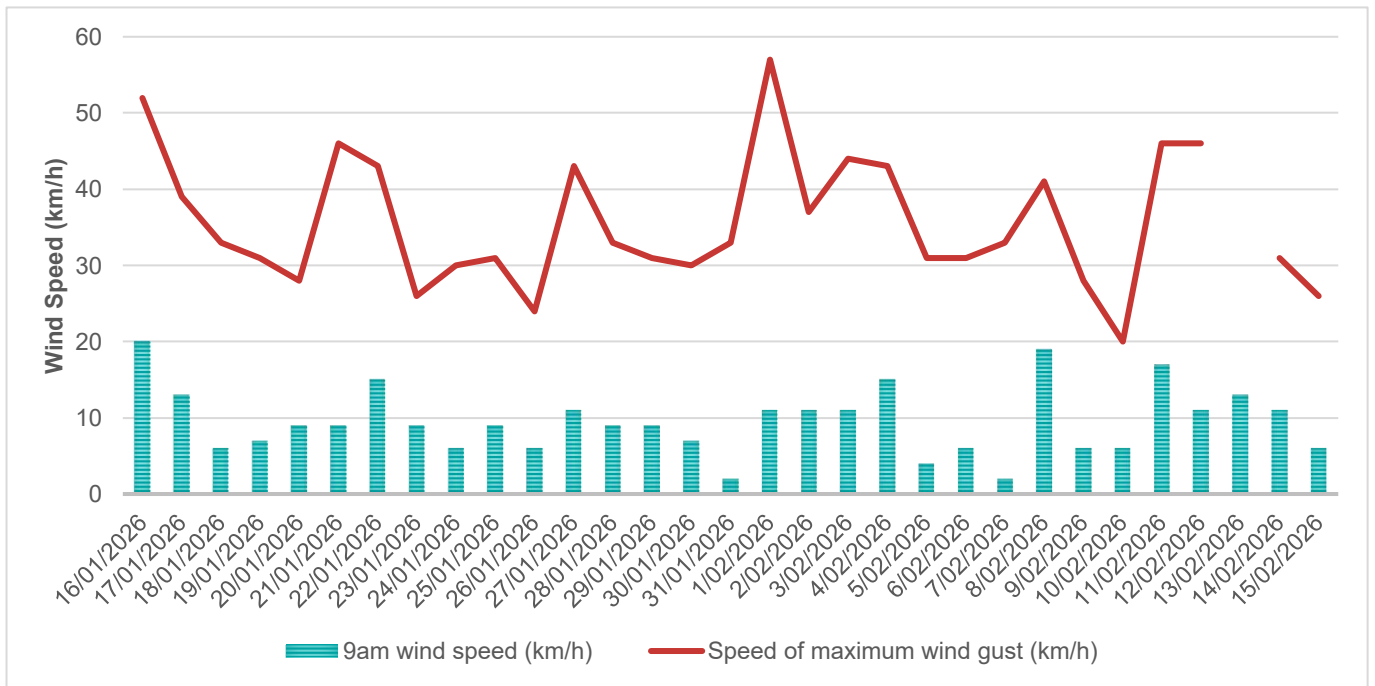


Figure 6: Daily wind speed observations for Melbourne (Olympic Park), Victoria 16/01/2026 – 15/02/2026. Data Source BOM.

## 4. Quality Assurance

### 4.1 Data Capture

Data capture is defined as the number of valid data periods collected divided by the number of available data periods. Valid data excludes period where the instrument is unavailable due to calibration and maintenance and excludes periods where the data has been rejected due to quality assurance/data validation procedures.

Data capture statistics for the reporting period 16 January 2026 – 15 February 2026 are shown in Table 7, below.

Data capture was 100% for all parameters at the ESF Northwest monitor and 65% at the Southwest monitor due to a technical firmware issue that caused no data to be recorded from 22 January to 2 February during the reporting period. Both Burwood monitors achieved 100%.

Table 7: Air quality monitoring, data capture summary

Location	Parameter	Averaging Period	Collected Periods	Available Periods	Data Capture
Mount Waverley – ESF northwest	PM <sub>10</sub>	24-hours	31	31	100%
Mount Waverley – ESF southwest	PM <sub>10</sub>	24-hours	31	20	65%
Burwood Site Compound - BUW East	PM <sub>10</sub>	24-hours	31	31	100%
Burwood Site Compound - BUW South	PM <sub>10</sub>	24-hours	31	31	100%

### 4.2 Data Validation

Data contained in this report has been validated against performance and calibration requirements for each instrument. Data during commissioning, maintenance and calibration periods has been removed from the validated data sets.

Table 8: Monitoring device calibration information

Location	Device Serial Number	Calibration Date	Calibration Due
Mount Waverley – ESF northwest	HEX-001065	11/06/2025	11/06/2027
Mount Waverley – ESF southwest	HEX-001185	11/06/2025	11/06/2027
Burwood Site Compound -BUW East	HEX-000635	11/06/2025	11/06/2027
Burwood Site Compound -BUW South	HEX-000707	11/06/2025	11/06/2027