

MAJOR WORKS START

Artist's impression of the Watson Street Interchange, looking west towards Wallan town centre

WATSON STREET INTERCHANGE AND NORTHERN HIGHWAY INTERSECTION UPGRADES

AUTUMN 2026



We're upgrading the Watson Street Interchange at the Hume Freeway and the Northern Highway and Watson Street intersection to improve access, ease congestion, and make it simpler and safer to move into and around Wallan.

Works to prepare the project areas for major construction began in early 2026.

Across both projects, we've completed a range of early works, including:

- setting up site compounds to support upcoming construction activities
- carrying out pavement, geotechnical and environmental investigations to understand ground conditions
- completing surveying to confirm project boundaries and locate underground services such as power, water and telecommunications
- setting up environmental protection zones and completing vegetation pruning and removal where required to safely create space for major works
- building temporary pavement so traffic lanes could be shifted slightly, helping to keep traffic moving during construction.

We've installed temporary concrete barriers on Watson Street and the Hume Freeway so crews can safely build the new ramps away from traffic. This helps to keep the community and our workers safe.

Over the coming months, you'll see more works near the new ramps and at the Northern Highway and Watson Street intersection. We're coordinating construction activities to manage traffic changes and minimise disruption for the community.



Sign up for updates
Subscribe for email and SMS updates
at bigbuild.vic.gov.au/roads-subscribe



Australian Government
BUILDING AUSTRALIA



Watson Street Interchange Upgrade and Northern Highway Intersection Upgrade



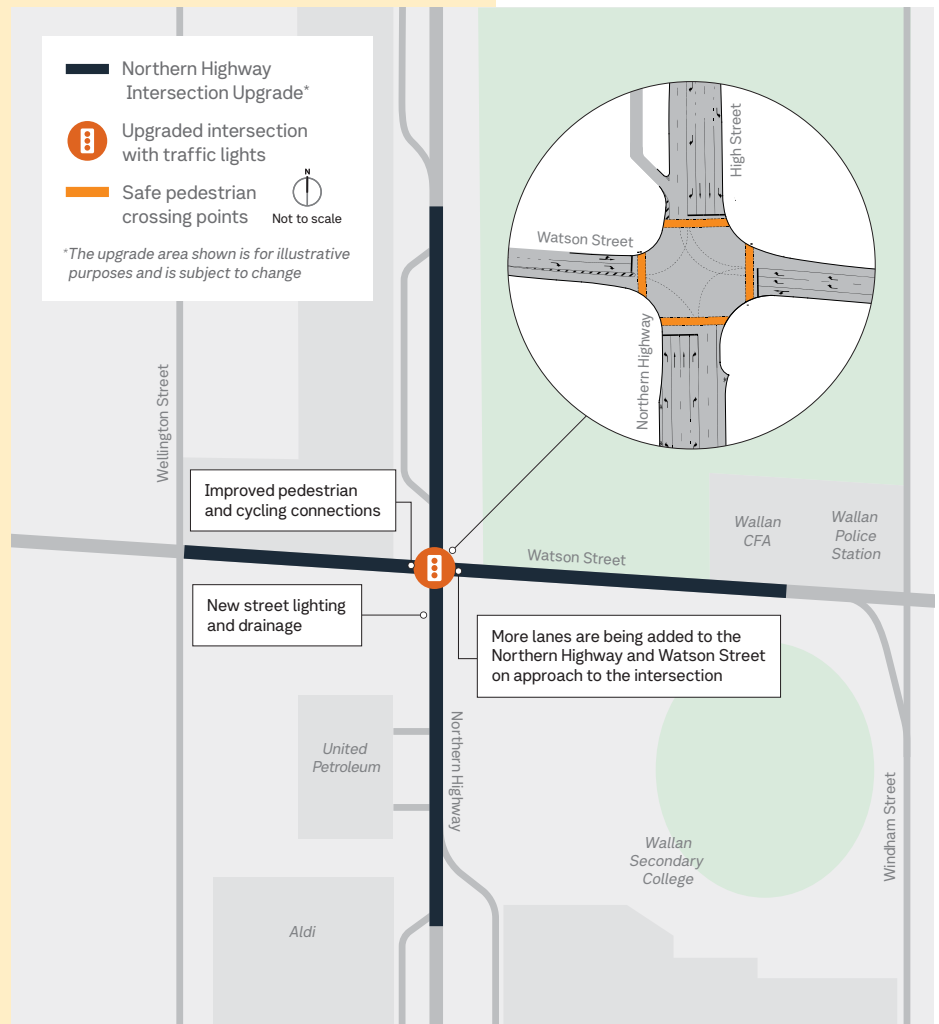
NORTHERN HIGHWAY INTERSECTION UPGRADE

We're upgrading the intersection of Northern Highway and Watson Street in Wallan to improve traffic flow and make the area safer and more efficient for everyone.

What we're doing

To improve the intersection, we'll:

- add new lanes on the Northern Highway at the intersection to improve traffic flow
- build a second right-turn lane for vehicles turning from Watson Street onto the Northern Highway heading north
- improve walking and cycling connections for safer movement and better links to existing paths
- upgrade drainage, street lighting, underground utilities and signage to support the improvements.



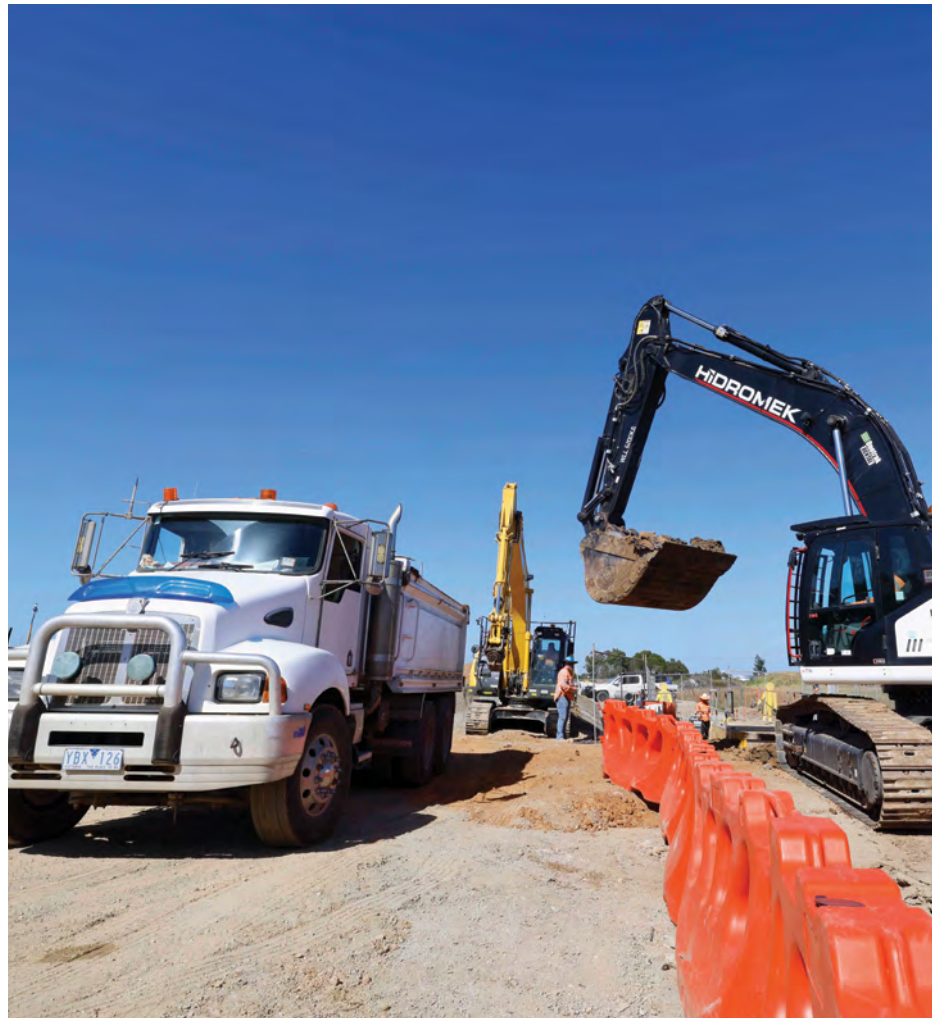
WATSON STREET INTERCHANGE UPGRADE

We're upgrading the Watson Street Interchange at the Hume Freeway to improve access, ease congestion, and make it simpler and safer to move into and around Wallan.

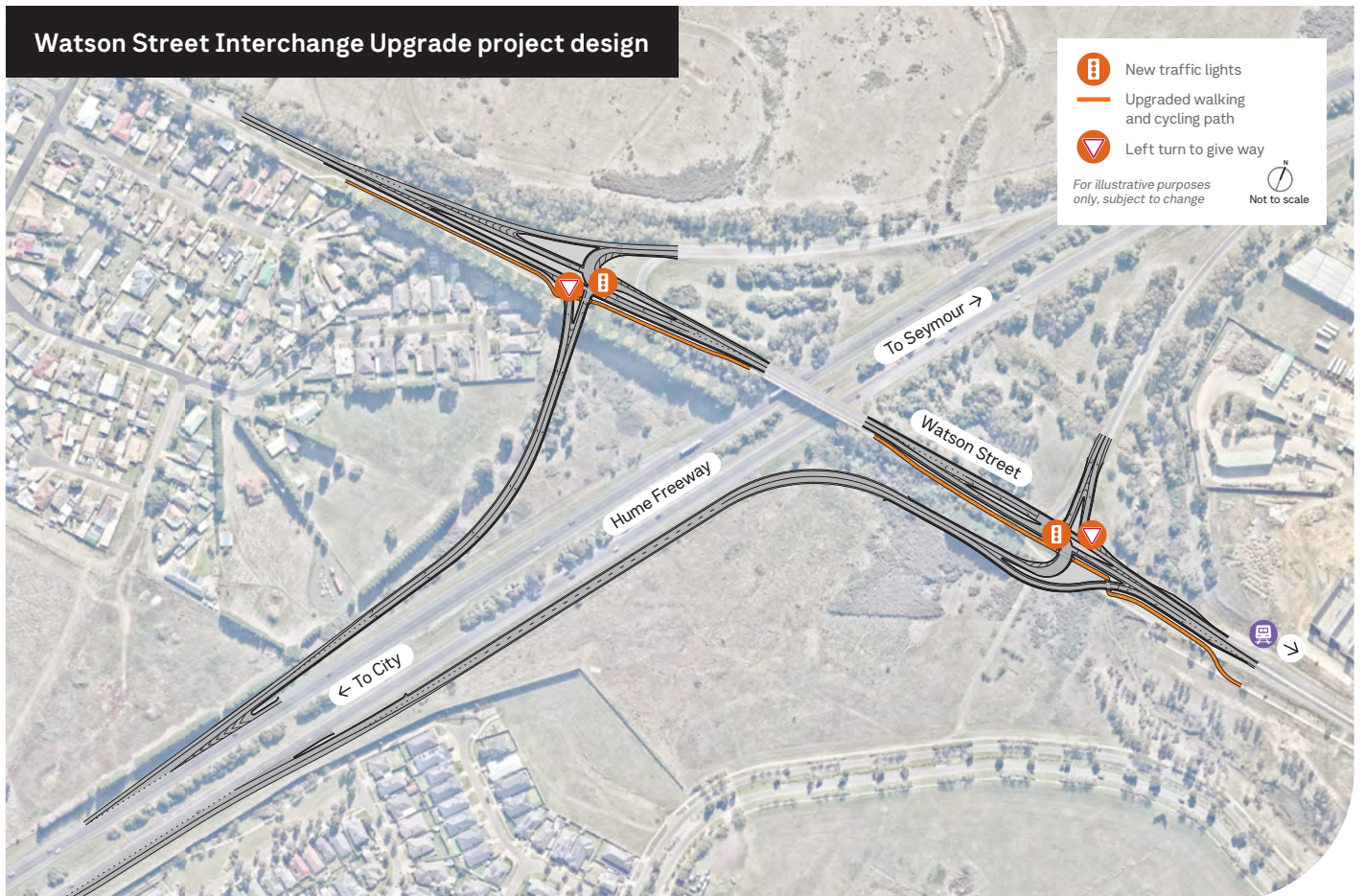
What we're doing

As part of the upgrade, we'll:

- add an outbound exit ramp and an inbound entry ramp, connecting Watson Street to the Hume Freeway
- install new traffic signals east and west of the existing Watson Street bridge over the Hume Freeway
- resurfacing road along Watson Street between Windham Street and Hume Freeway
- improve walking and cycling connections to the existing bridge and along Watson Street.



Watson Street Interchange Upgrade project design



What's coming up

Watson Street Interchange Upgrade

We've started building the new south-facing ramps.

Over the next few months, crews will remove topsoil, begin major earthworks, excavate to install drainage and continue relocating underground services.

These works will continue through to late May as construction of the new ramps progresses.

Northern Highway Intersection Upgrade

We've started early works near the Northern Highway/High Street and Watson Street intersection.

These include laying temporary pavement and installing drainage.

From late March to early April, we'll install temporary fencing and safety barriers to prepare the site for major construction, which is planned to start in April.

Traffic and access changes from April 2026

From April until mid-2026, drivers travelling south on Northern Highway will not be able to turn right onto Watson Street. Please detour via Queen, Wellington and Duke streets.

We'll change how you access the United service station. The current entry driveway from Northern Highway will be closed. Drivers will

need to use the existing service road in front of the Wallan Ambulance Station to enter the service station.

We'll also change access to the business precinct north-west of the intersection. The usual entry to the service road and the car park from Northern Highway will close. We've built temporary pavement at the current exit to allow vehicles to use it as both an entry and exit point.

This access will operate as left-in/out only. Drivers will not be able to turn right into or out of the service road.



Scan the QR code to view the map to access the shops and service station



Out and about in the community

From late 2025 to early 2026, as we moved closer to the start of major works, we continued connecting with the community through pop-ups, drop-in sessions and local events.

During this time, we spoke with nearly 900 community members across activities including sessions at Wellington Square Shopping Centre and the Wallan Scout Saturday Market.

These conversations gave locals the opportunity to ask questions, share valuable insights, meet the project team and learn more about what to expect as construction gets underway.

Thank you to everyone who stopped by to chat with us.

Keep an eye out for us at upcoming community events, or subscribe to project updates to find out where we'll be next.

Project timeline



Late 2025/early 2026

- site investigations and early works
- contract awards
- site compound set-ups
- finalise detailed designs
- major construction starts on Watson Street Interchange Upgrade



April 2026

- major construction starts on Northern Highway Intersection Upgrade



Mid-2027

- Northern Highway Intersection Upgrade project completed



Late 2027

- Watson Street Interchange Upgrade project completed

Watson Street free community shuttle service

The footpath along Watson Street, between McCarthy Court and Wallara Waters, will remain closed until mid-2026 while works around the bridge are underway.

We've laid temporary pavement on the north side of Watson Street, either side of the bridge, to allow traffic lanes to shift slightly and remain open in both directions while the new ramps are built.

Because space on the bridge is limited during this stage of works, the footpath remains closed to keep pedestrians safe while construction continues.

To help pedestrians safely cross the Watson Street bridge, we're running a free community shuttle bus in a 20-minute continuous loop between Wallan train station, the entrance to Wallara Waters and Wallan town centre. This service runs from 6am to 10pm, 7 days a week.

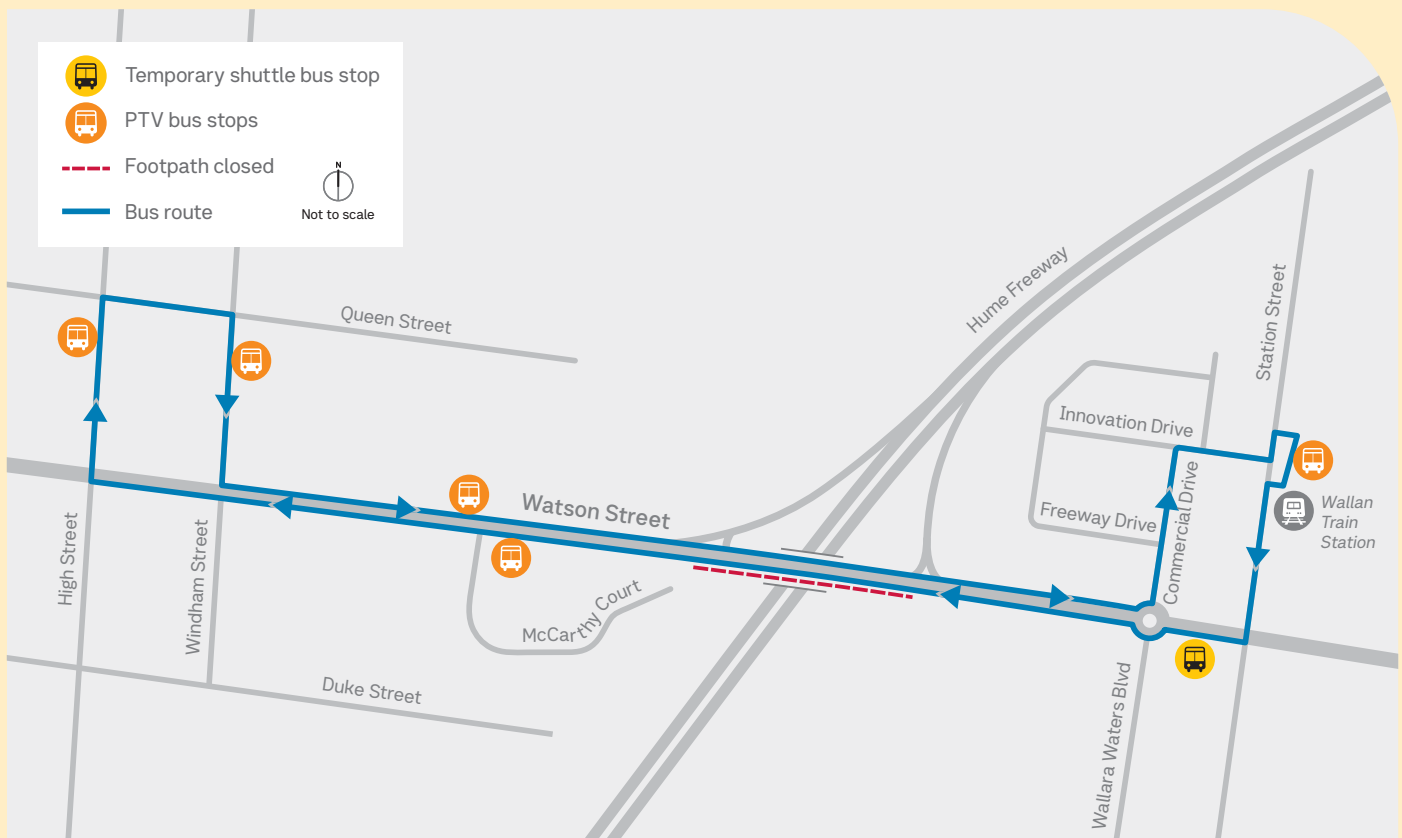
We're also running a dedicated school shuttle service before and after school. This helps students who usually walk to school across

the bridge to travel safely through the area. You'll see signage and shuttle information installed around the area.

Pedestrians planning to cross the Watson Street bridge outside of these hours should call us on **1800 105 105**.



Scan the QR code for more information and to view the timetable



Works in Melbourne's north

The Northern Highway Intersection Upgrade and the Watson Street Interchange Upgrade form part of a broader program of road upgrades across Melbourne's north. These works sit alongside other Big Build Roads projects, including upgrades to Bridge Inn Road, Mickleham Road, Epping Road and Craigieburn Road.

Melbourne's northern corridor is experiencing ongoing growth, which is increasing pressure on the road network. Projects like these are being delivered to support safer and more reliable travel by improving road access and connections across the area.

Together, these upgrades aim to improve how the road network functions, supporting travel between residential areas, industrial precincts and education and health services, and helping to provide more consistent journeys for people travelling through Melbourne's north.



Managing the local environment

We're committed to minimising impacts on the local environment while we build safer and more accessible roads for everyone.

We work closely with arborists and ecologists to ensure we protect and minimise impacts to local flora and fauna while we complete the upgrades. Upon project completion, thoughtful landscaping will be carried out throughout the project area.

We are also working closely with Mitchell Shire Council and the local RSL, who are the guardians of the Avenue of Honour, on the Northern Highway intersection, to ensure all heritage and commemorative elements are treated with the utmost care and respect.

The Wallan Avenue of Honour is a cherished memorial that honours 53 local service members from World War I.

To support essential road improvements, one mature tree, already scheduled for replacement due to poor condition, has been respectfully removed. We will plant one new tree at project completion to support the long-term care and future of the Avenue of Honour.

A second juvenile tree will be carefully translocated to maintain the Avenue's alignment and long-term viability.

We are continuing to work collaboratively with the Council and RSL to ensure tree replacement, translocation, plaque reinstatement, and overall presentation align with the Avenue's existing layout and commemorative intent.



What you can expect

Temporary traffic changes

There will be changes to how you travel through the area while we work. These will include speed reductions, lane closures and walking and cycling path closures. We'll provide advance notice of any traffic changes through email updates, electronic message boards, SMS reminders, and notifications.

For more information visit bigbuild.vic.gov.au/disruptions.

Working hours

Our standard working hours are **7am to 6pm, Monday to Friday, and 7am to 1pm on Saturdays**. Some work will need to happen at night or on weekends to reduce traffic disruptions. If we need to work at night, we'll let you know ahead of time.

We'll work to maintain access to homes and businesses at all times. If temporary access changes are needed, we'll notify affected residents and businesses before works begin.

For more information, contact us 24 hours a day, 7 days a week on **1800 105 105** or contact@bigbuild.vic.gov.au

bigbuild.vic.gov.au/roads



For languages other than English please call 9209 0147

1800 105 105 (call anytime)
contact@bigbuild.vic.gov.au



Please contact us if you would like this information in an accessible format. If you need assistance due to a hearing or speech impairment, visit relayservice.gov.au