



DOMAIN COMMUNITY REFERENCE GROUP

Meeting #9

Wednesday 22 August 2018, Seasons Botanic Gardens



INTRODUCTION



CROSS YARRA PARTNERSHIP

SEPTEMBER WORKS UPDATE

CURRENT WORKS – NORTHERN BOX



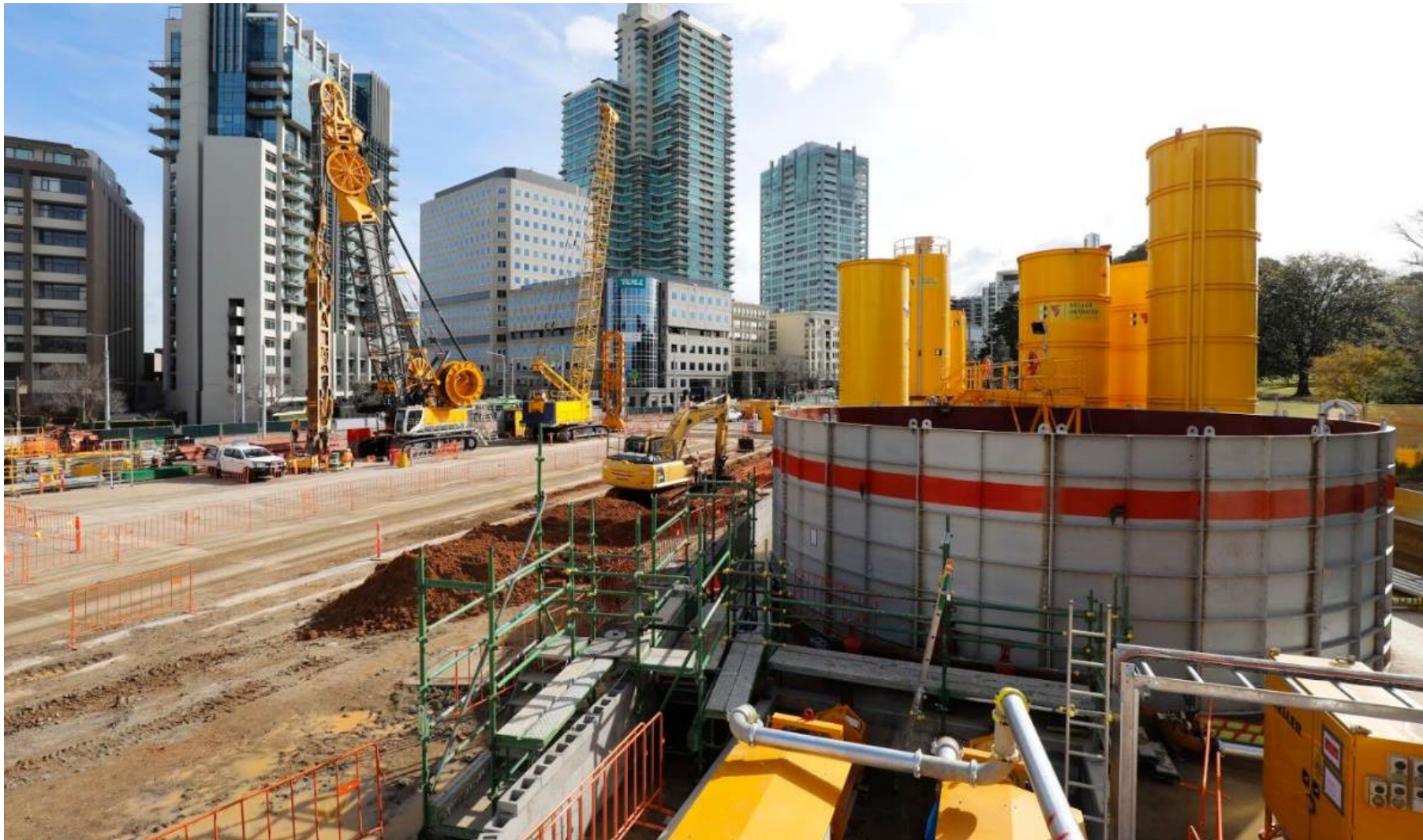
CURRENT WORKS – NORTHERN BOX



CURRENT WORKS – SOUTHERN BOX



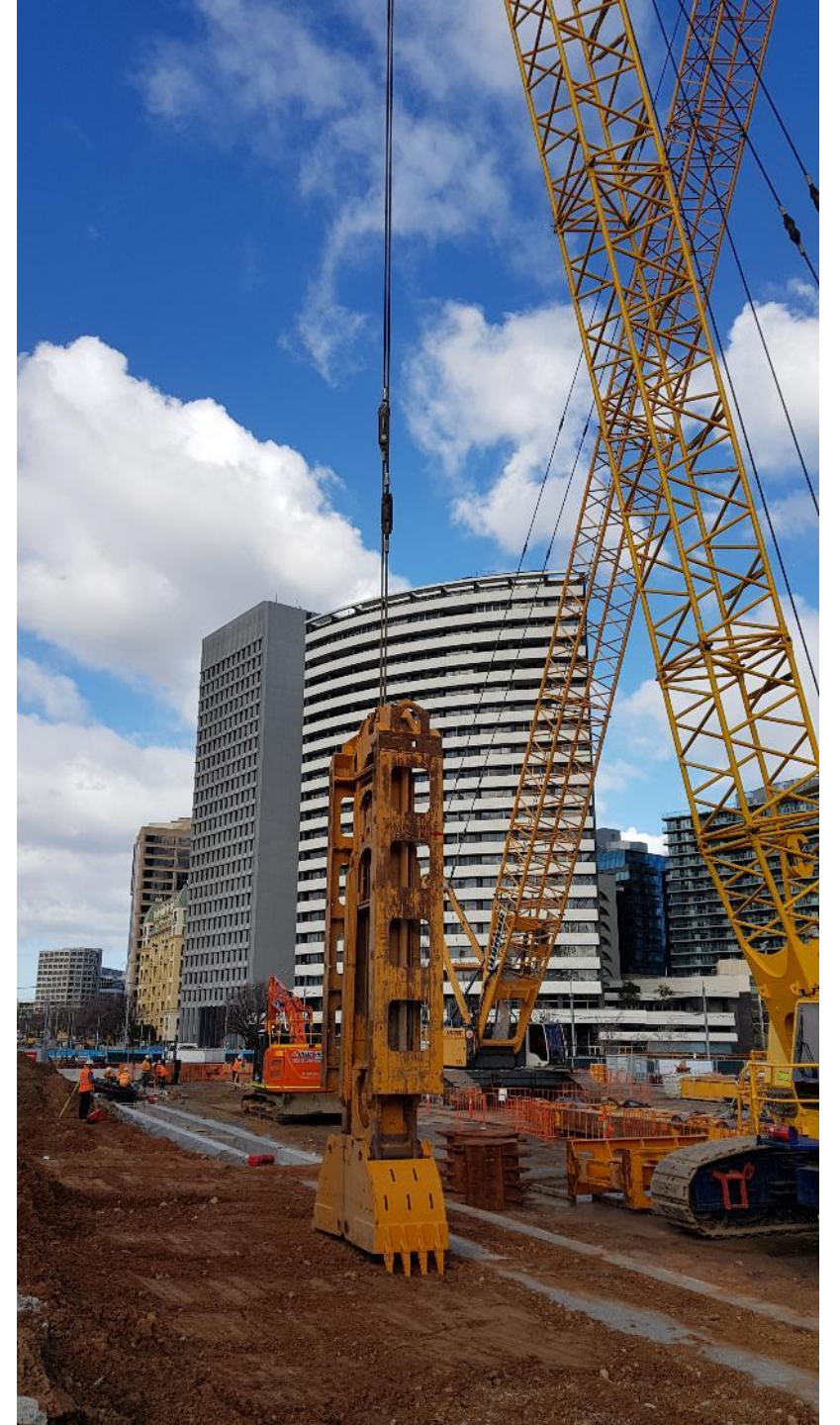
CURRENT WORKS



UPCOMING WORKS

NORTHERN BOX

- D-Wall works have commenced
- Pedestrian covered walkway to be installed near Melbourne Grammar School

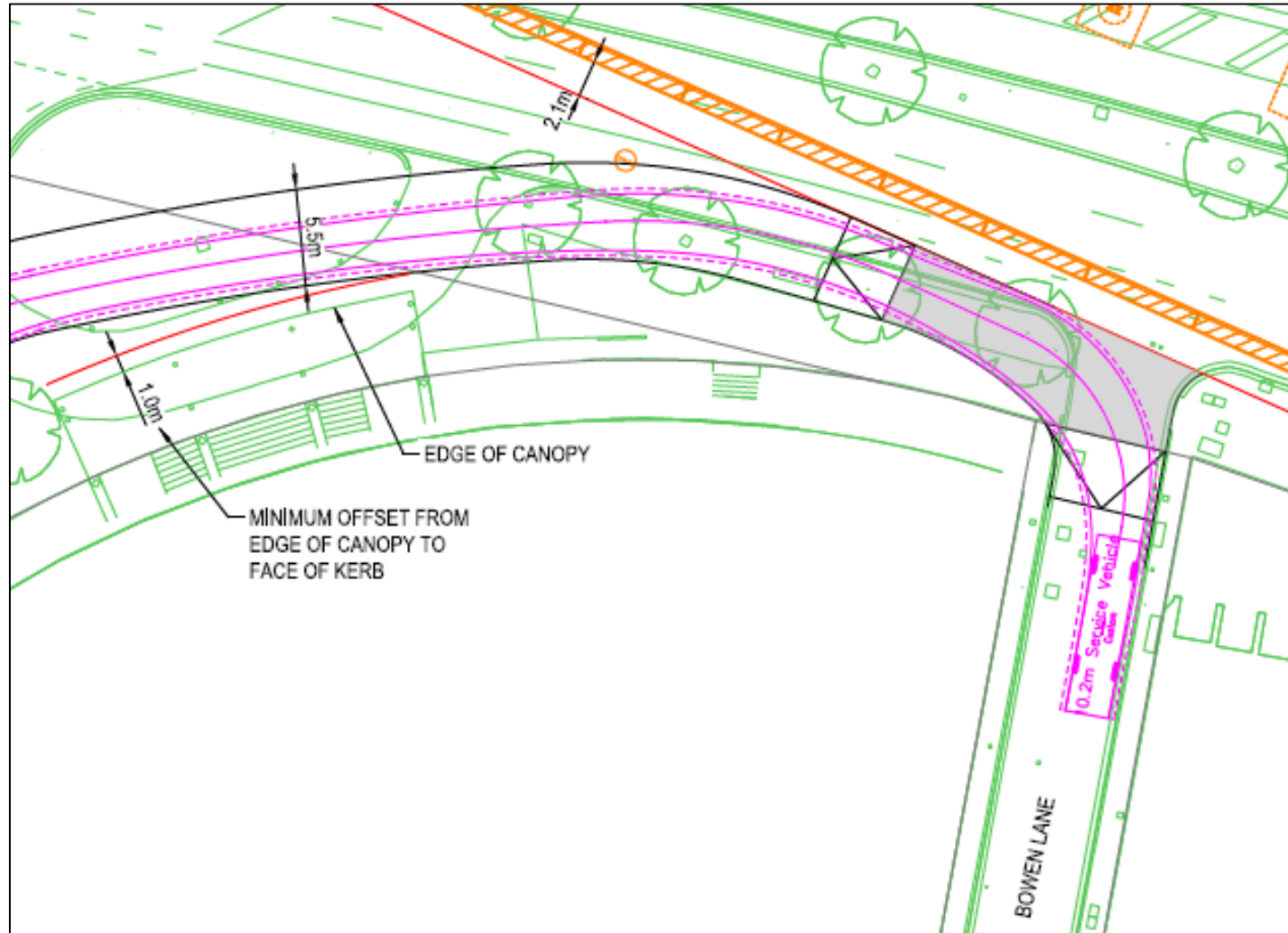


UPCOMING TRAFFIC CHANGES

- Road realignment works, Bowen Lane to Albert Road South
- Line marking works on St Kilda Road and pinning barriers



BOWEN LANE TO ALBERT ROAD (DRAFT CONCEPT)



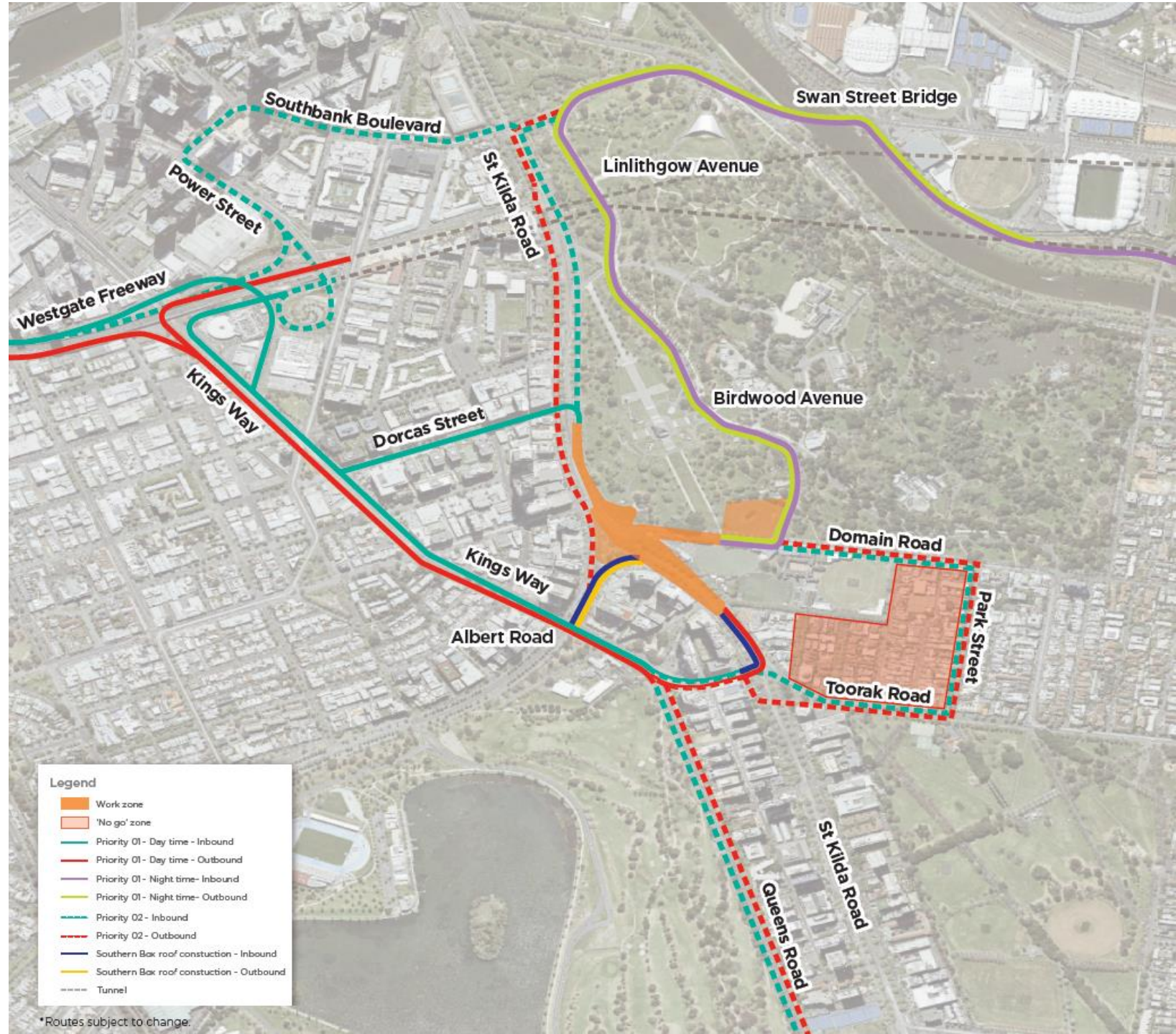
UPCOMING WORKS

SOUTHERN BOX

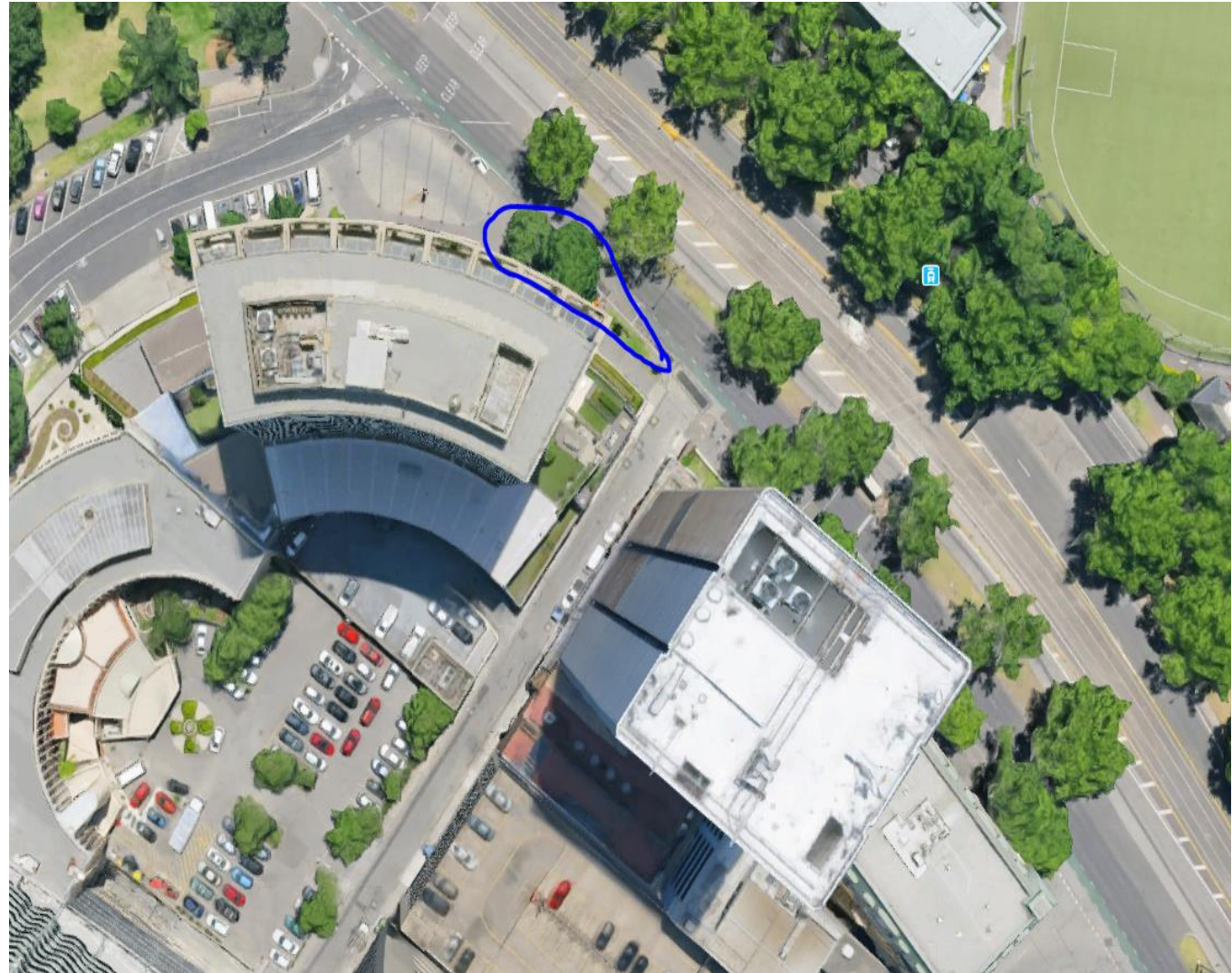
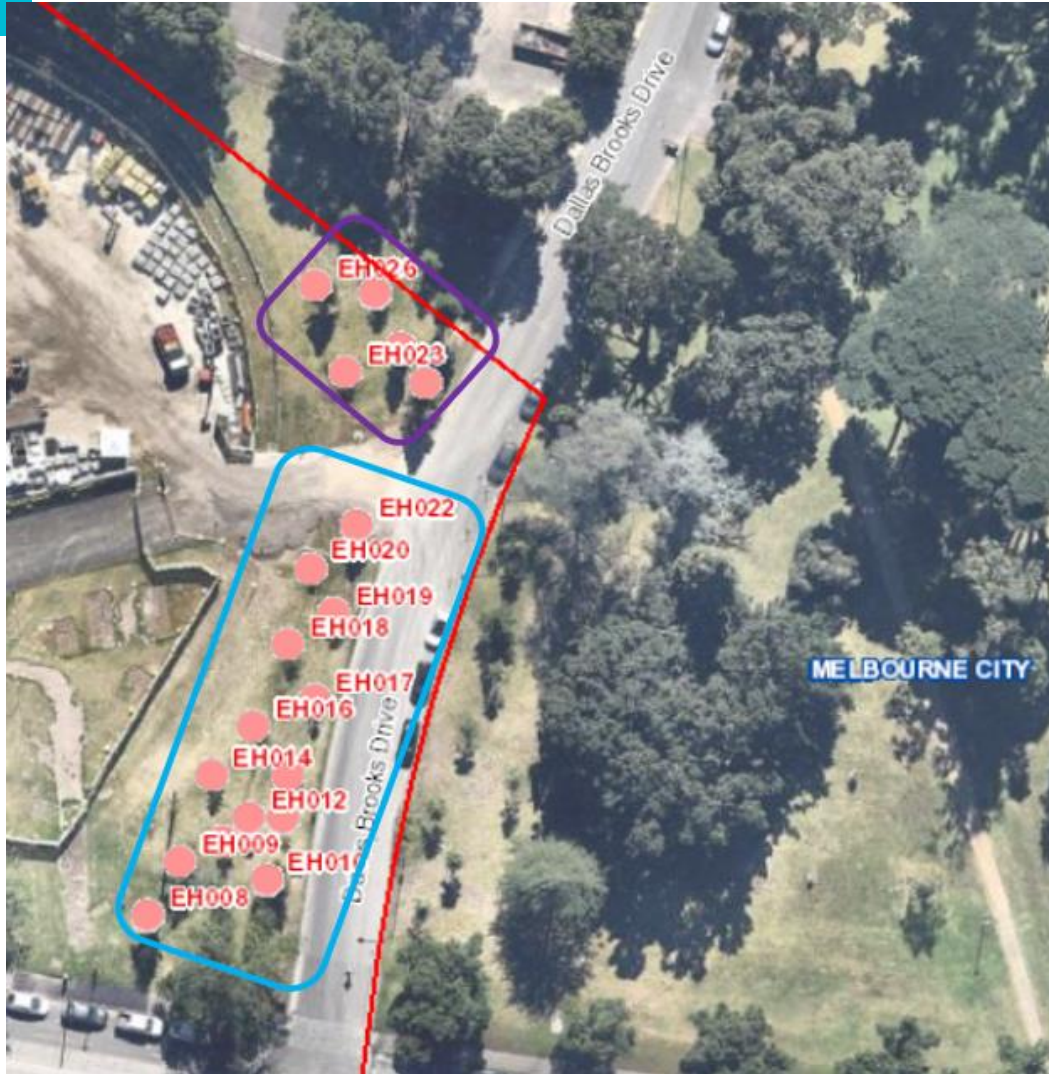
- Ground Anchor removal
- Obstruction removal
- Guide wall construction



TRUCK ROUTES



TREE REMOVAL UPDATE





DUST MANAGEMENT

- Minimise ground disturbance and stockpiling onsite
- Dust suppression for exposed surfaces
- Apply stabilising agent
- Use water sprayers
- Restrict vehicles to defined roads
- Ensure all plant and equipment are fitted with appropriate emission control equipment
- Entry, exit and haul roads to be kept clean
- Speed limits to be used on unsealed surfaces
- Cover loads on trucks
- Check weather forecasts



CROSS YARRA PARTNERSHIP

COMMUNITY AND BUSINESS SUPPORT MEASURES

METRO TUNNEL CREATIVE PROGRAM OBJECTIVES

- Keep the city vibrant and moving
- Think laterally about space and place
- Remain quintessentially 'Melbourne' in our approach
- Stay true to local character
- Keep the city's areas active
- Keep Melbourne liveable



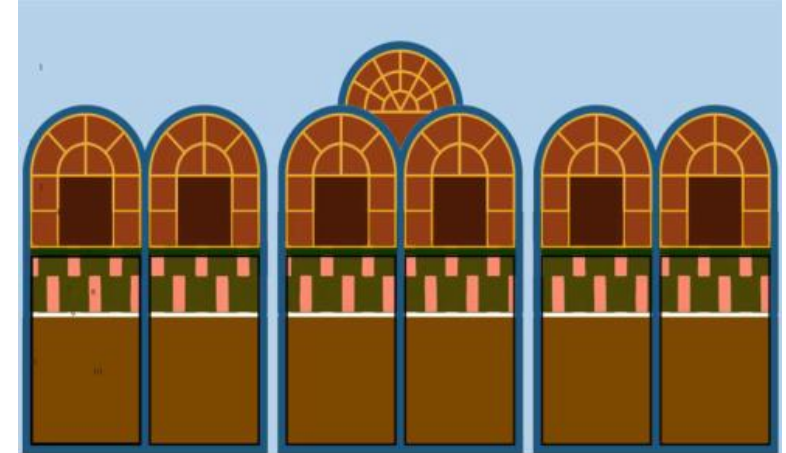
METRO TUNNEL CREATIVE PROGRAM

- Focus is on the edge of construction
- Scope of the program is the scope of the project
- Primary stakeholder is the community experiencing disruption
- Disruption brings unique opportunity to showcase arts and creativity
- No cash sponsorships
- Robust measuring and reporting will shape future program



COVERED WALKWAY- INSTALLED ARTWORK

- Gantry artwork designed by **Esther Stewart**
- Recently won 'Best stall' at Melbourne Art Fair
- Routed and painted ply installed into container to provide improved visual amenity



PANELS ACTUAL LAYOUT ON SITE 27M LONG (END PANELS CUT ON SITE)

DOMAIN ROAD POP UP

Purpose

- Aimed to replenish green space and public amenity lost through the establishment of the construction site
- Provide a temporary space for the public to utilise and enjoy
- Help support local businesses disrupted by construction works

Timing

- Indicative install date of December 2018
- Temporary in nature – 5 months in place before removal

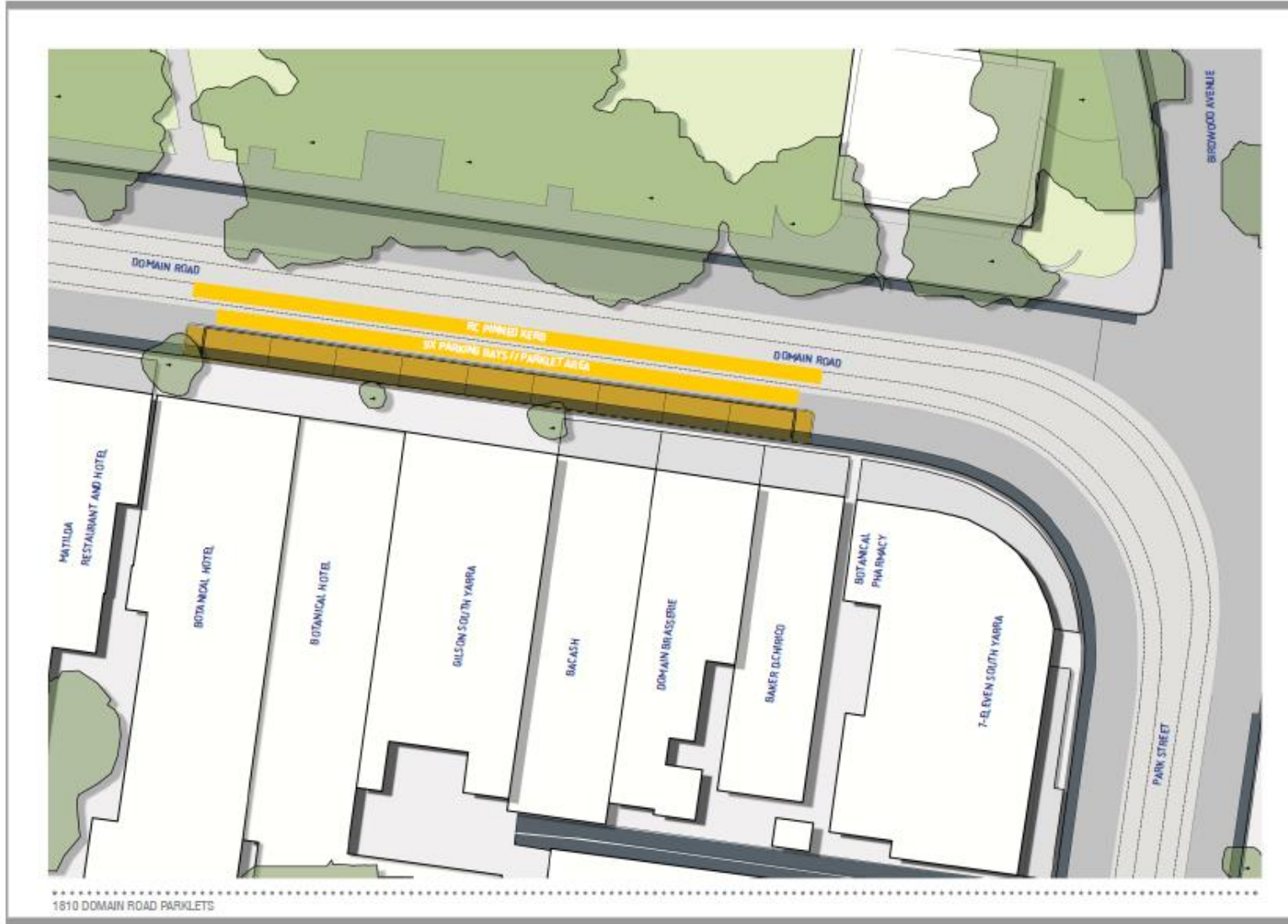
Car Parking

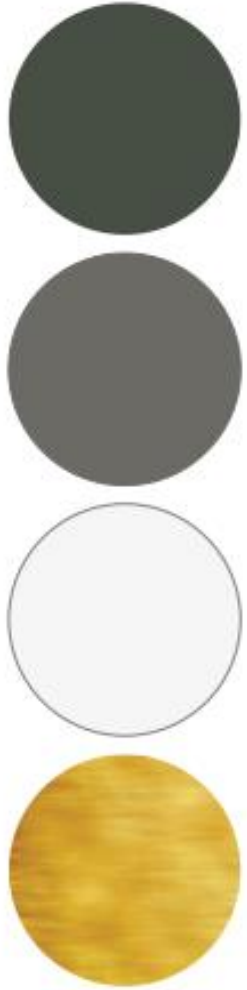
- Temporary usage of 9 x parking bays located on Domain Road, roughly from the shopfronts of Baker D.Chirico to Botanical
- Car parking will be reinstated at the conclusion of activation

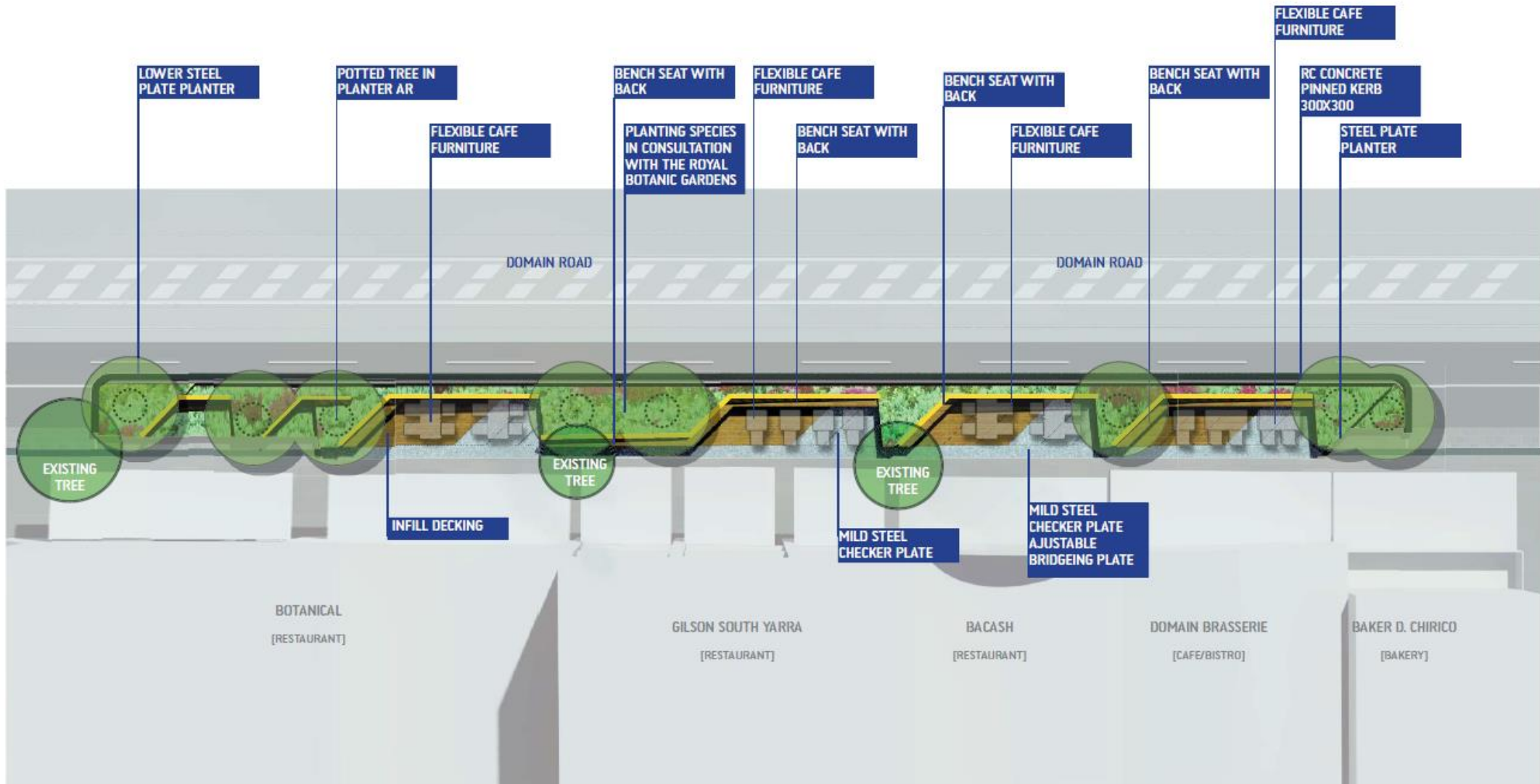
Street Trading

- Retailers will have the opportunity to extend footpath dining into Parklet space for the length of the pop-up.

DOMAIN ROAD PARKLETS













WHAT'S NEXT?

ACTION	DATES
Community Consultation & Feedback	August 24-September 14
Revised Designs (Based on Feedback)	Mid September
Final design and documentation	Late September
Fabrication	October – December
Installation on site	December

HAVE YOUR SAY ONLINE

metrotunnel.vic.gov.au/about-the-project/creative-program



YARRA TRAMS

TRAM NOISE UPDATE



NOISE MONITORING AND ASSESSMENTS

- Noise monitoring by Rail Projects Victoria (RPV)
- Yarra Trams two trials
 - Crack Sealant
 - Friction Modifier

CRACK SEALANT TRIAL

- Sawcut 25mm either side of rail (Jul18)
- Noise measurement post sawcut
- Gap Sealant (14Aug18)
- Noise measurement post gap sealant installation



FRICTION MODIFIER TRIAL

- Brake performance testing at Preston Tram Depot completed July
- Site application on St Kilda Road
 - Pre test measurement of noise
 - Friction modifier applied and water added
 - Noise measured after application
 - Marked reduction in noise



FRICTION MODIFIER TRIAL: NEXT STEPS

- Design
 - Design without compromising existing track
 - Restricted locations
 - Power and drainage
- TSV approval process

