

How will we excavate the station site?

We are preparing to excavate the underground space where the station will be built – the station ‘box’ – ready for tunnel boring machines to pass through after tunnelling begins.

We'll start by building what's called a capping beam. This will connect all the diaphragm wall panels to create a continuous beam around the station area.

Specialised equipment will be installed to remove groundwater from the worksite during excavation.

With the area prepared, we'll begin excavation of the station box. This will take place in three stages.

One layer of soil will be removed, and steel beams installed. These steel beams support the structure of the station box.

This process is repeated with a second layer of soil and steel beams.

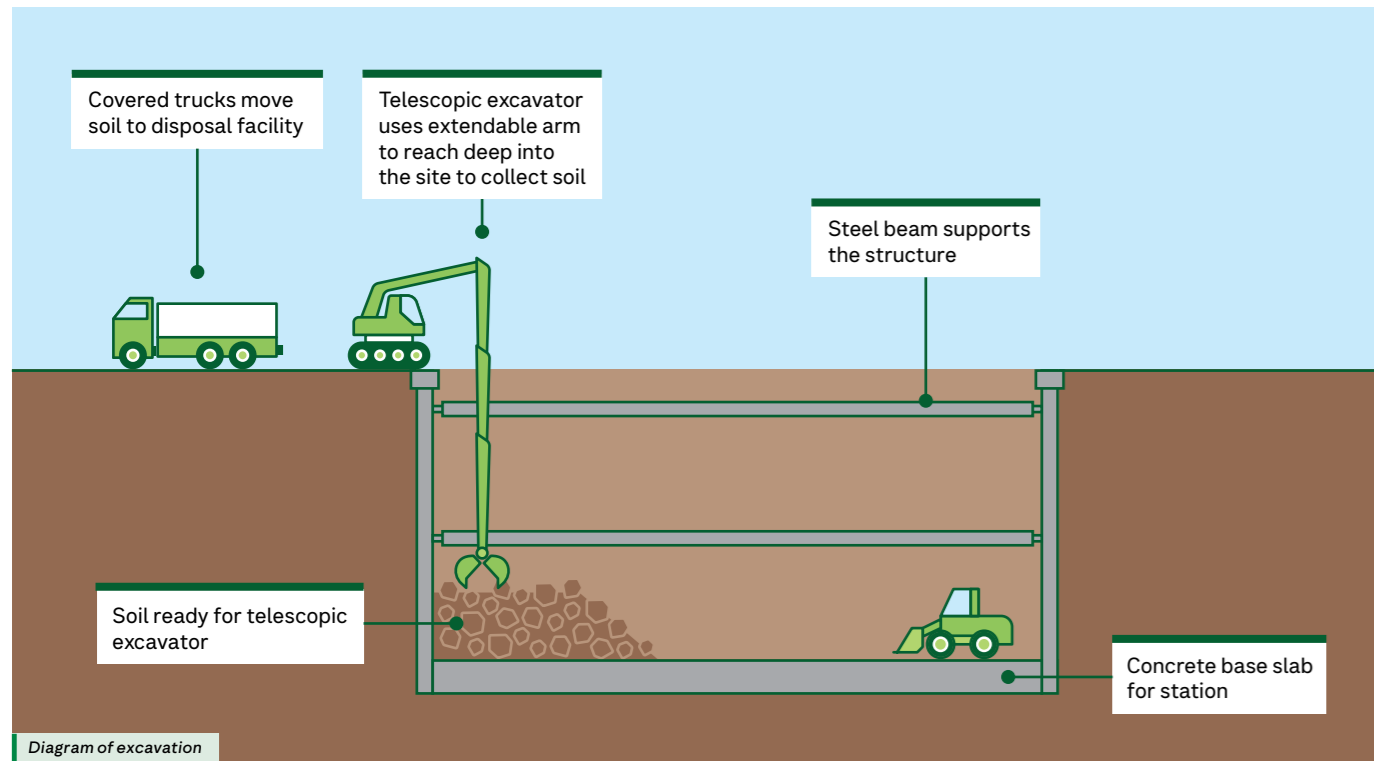
We will then dig to the bottom of the new underground station and pour the concrete base slab.

Excavation of the station site is expected to be completed in 2027.

Building the underground connection to the existing station

Excavation beneath the existing elevated rail line is different to the main worksite. This part of the station box is called the 'adit' and will form the future underground connection between the existing Clayton Station and the future SRL East station. This location is marked on the map on the next page.

A concrete roof will be installed at ground level to strengthen and support the elevated rail line. We'll then dig from beneath the concrete slab to remove soil.



WORKS ARE ON, SHOPS ARE OPEN

Support your local traders during construction.

DISCOVER **CLAYTON**

Clayton progress update



Upcoming works in Clayton

Preparing to excavate

7am Monday to midnight Saturday



Excavation of the station site

7am Monday to midnight Saturday



SRL Clayton worksite between Clayton, Haughton and Madeleine roads

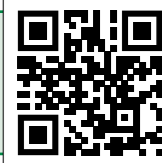
SRL Clayton worksite between Clayton, Haughton and Madeleine roads

Mid-2026 to mid-2027

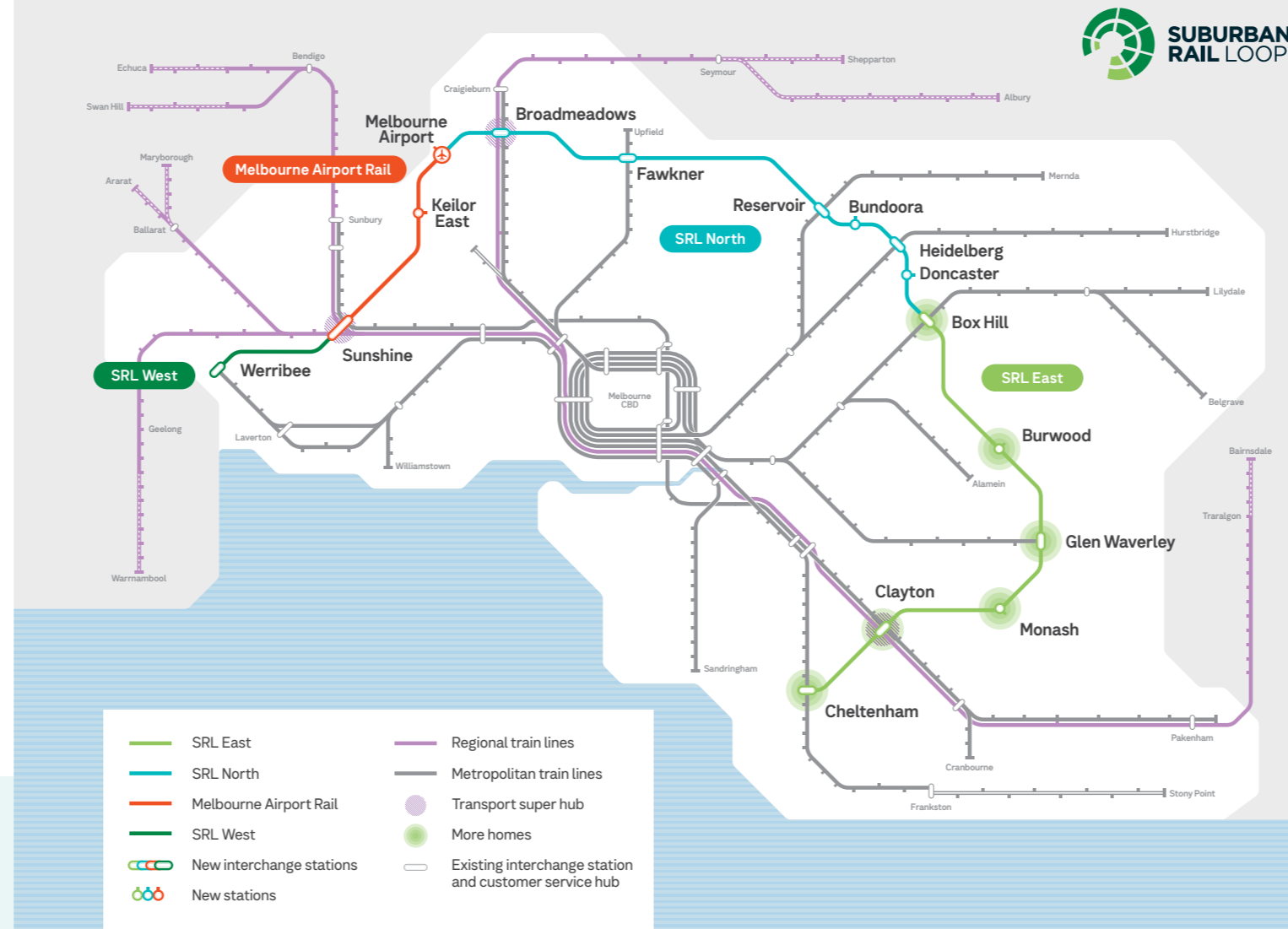
- Excavation of the station site will involve excavating soil from the ground and installing steel reinforcement beams.

This work will involve noise, dust, vibration and light.

- Ongoing
- The layout of the SRL Clayton worksite will change as we start digging the station box and machinery used for diaphragm wall construction is taken off site.
 - Continued deliveries and movements of large equipment.
 - Continued standard size truck deliveries, with oversized loads prioritised at night to reduce local traffic impacts.



Scan the QR code or visit suburbanrailloop.vic.gov.au/sms-clayton to receive SMS updates and reminders for SRL East works in CLAYTON.



- SRL East
- SRL North
- Melbourne Airport Rail
- SRL West
- New interchange stations
- New stations
- Regional train lines
- Metropolitan train lines
- Transport super hub
- More homes
- Existing interchange station and customer service hub

For illustrative purposes, subject to further detailed technical investigations and consultations.

Managing dust at the Clayton worksite

How we minimise dust and dirt during excavation:

- Using water trucks to regularly wet down the site
- Covering truck loads and soil piles
- Cleaning construction vehicles at site exit points by using controls such as rumble grids to clean dirt off vehicle tyres when they drive over it
- Cleaning the roads around the site with street-sweepers
- Maintaining dust monitors on site boundaries.



Water truck in use to minimise dust

What causes noise, dust and vibration?

The impact of the noise and vibrations depends on the ground conditions and distance between your property and the works. The main sources of noise, dust and vibration are:



Excavation and rock breaking



Drilling deep into the ground, known as piling



Heavy machinery, generators and power tools

We regularly measure air quality, noise levels and vibration to ensure that we are managing these impacts appropriately.

Work is progressing on Suburban Rail Loop and 2026 is the project's busiest year yet. We have translated this newsletter into other languages to keep everyone updated about Suburban Rail Loop news.



Scan the QR code on your smart phone for more information or go to our website.

Οι εργασίες στον Προαστιακό Περιφερειακό Σιδηρόδρομο προχωρούν και το 2026 είναι η πιο παραγωγική χρονιά του έργου. Έχουμε μεταφράσει αυτό το ενημερωτικό δελτίο σε άλλες γλώσσες για να ενημερώνουμε όλους τους πολίτες για τα νέα του Προαστιακού Περιφερειακού Σιδηρόδρομου.



Σαρώστε τον κωδικό QR στο έξυπνο τηλέφωνό σας για περισσότερες πληροφορίες ή μεταβείτε στον ιστότοπό μας.

近郊铁路环线 (Suburban Rail Loop) 项目工作正在推进, 2026年将会是目前为止我们最繁忙的一年。

我们将这份通讯翻译成多种语言, 帮助您及时了解近郊铁路环线项目的最新消息。



请用智能手机扫描二维码了解更多信息, 或直接访问我们的网站。

contact@srla.vic.gov.au | 1800 105 105 (call anytime)
suburbanrailloop.vic.gov.au

Please contact us if you would like this information in an accessible format. If you need assistance due to a hearing or speech impairment, please visit relayservice.gov.au



For languages other than English please call 9209 0147

如需非英语信息, 请拨打 9209 0147

अंग्रेजी के अलावा अन्य भाषाओं के लिए कृपया 9209 0147 पर कॉल करें

Για άλλες γλώσσες εκτός από τα Αγγλικά καλέστε το 9209 0147



A new underground SRL East station is coming to Clayton.

With the new underground Suburban Rail Loop (SRL) station, Clayton will become a transport super hub, connecting the Cranbourne, Pakenham and Gippsland lines to SRL. It will improve access to vital hospitals and medical research centres.

The new station will connect passengers to more transport options and help deliver more homes and housing choice where people want to live - within walking distance of world-class public transport.

What have we been up to

In Clayton, we're finishing building underground reinforced concrete walls. These walls - called 'diaphragm walls' - will form the perimeter of the station box. Since mid-2025, we have successfully installed more than 500 metres of diaphragm walls across the worksite. Soon we'll start excavating the site of the new station.

Tunnel boring machines (TBM) have started arriving in Melbourne, ready for tunnelling on SRL East to begin this year.

More information
suburbanrailloop.vic.gov.au

Clayton construction timeline

- 2022-2025
 - Initial and early works
- 2025
 - Main works underway
 - New community spaces opened
 - Elevated rail line strengthening works
 - Tunnel boring machines began arriving in Melbourne
- 2026
 - Completion of diaphragm wall construction
 - Station box excavation begins
 - SRL East tunnelling begins
- 2035
 - Trains running on SRL East

