

PAKENHAM – OCTOBER 2021

TREES AND VEGETATION



Getting ready to remove three level crossings

We're removing the dangerous and congested level crossings at McGregor Road, Main Street and Racecourse Road by building a rail bridge over the roads and building new stations at Pakenham and East Pakenham.

The Victorian Government has fast-tracked these level crossings for removal as part of a \$15 billion investment to upgrade the Pakenham line which will be boom gate free by 2025.

We're building a new rail bridge over the roads to reduce local congestion and to allow more trains to run more often, as well as introducing new community open spaces for locals to enjoy. Pakenham will be level crossing

free, with all boom gates gone for good in 2023/24. The new stations and new open space under the rail bridge will be ready for locals to enjoy in 2024.

During planning for the project we work with qualified arborists and sustainability and environmental specialists to minimise the impacts to local flora and fauna.

Minimising tree and vegetation removal is a priority as we develop designs and during construction.

Major works will start in early 2022, and in late 2021 we need to start preparing the site by relocating utilities, setting up our site facilities and removing vegetation that will be impacted by the works. We'll also establish protection zones around existing trees and vegetation.

Assessing trees and vegetation

Independent arborists assessed nearly 4000 trees, over 240 hectares between Toomuc Creek and Nar Nar Goon, to determine:

- structural strength, including the size and location of tree roots
- health and life expectancy
- amenity and significance
- location of services and construction works in proximity to trees.

levelcrossings.vic.gov.au

Authorised and published by the Victorian Government, 1 Treasury Place, Melbourne



Why we need to remove trees and vegetation

To build the elevated rail bridge, new stations and car parking, we need to install new infrastructure and relocate existing power, communications, and water services. This means we will need to remove trees and vegetation.

Most trees and vegetation being removed are within the rail corridor and around the station precincts.

Minimising tree removal

Reducing tree removal is a priority for the project.

Flora, fauna and heritage assessments have been conducted along the rail corridor and incorporated into the design and construction methods to reduce the number of trees that need to be removed.

We heard the community's concerns about trees at McGregor Road. Our design and construction methods allows us to retain trees on the south of McGregor Road between the rail line and Stockmans Circuit. These trees will remain a natural screen between homes and the rail line.

Every effort is made to protect and reduce impacts to native vegetation, threatened flora and fauna species and habitat areas, as well as Aboriginal cultural heritage and European heritage areas.

Protecting existing vegetation

All vegetation being retained will be separated from construction with no-go zones which protect the vegetation from construction impacts, above and below the ground.

Future landscaping and replanting

From your feedback we know trees, vegetation and green space are valued by the local community. New plantings and landscaping are an important part of the project design. These works will take place at the end of construction in 2024.

We'll use native trees and plants where possible, as natives are suited to the local environment and climate and need less watering. They also provide habitat for native animals and year-round foliage and shade.

We'll share landscaping plans and information about what's being planted in your neighbourhood as the project progresses.

Environmental initiatives

We'll work with Cardinia Shire Council to reuse removed trees for environmental and community projects, and in parks and gardens. Opportunities include:

- donating logs to community organisations, gardens, schools, Indigenous organisations, and artists
- mulch for landscaping and revegetation
- reuse of hollow tree logs for habitat.

If you're part of a group that could use the timber for local initiatives, email contact@levelcrossings.vic.gov.au or call 1800 105 105.

Wildlife

Before tree and vegetation removal, we work with wildlife handlers who inspect for wildlife and safely rehome any fauna we may encounter.

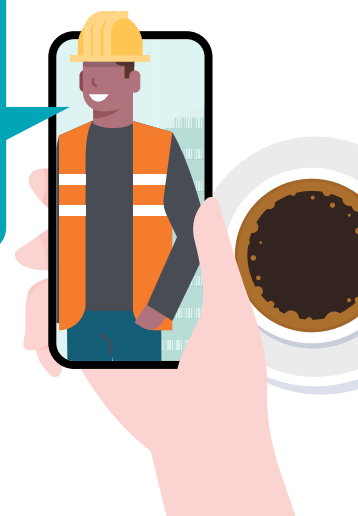
Culture and heritage

The Level Crossing Removal Project acknowledges and respects the Traditional Owners of the land, past, present and future. The project undertook comprehensive cultural heritage assessments and prepared a Cultural Heritage Management Plan in accordance with the Aboriginal Heritage Act 2006 to maintain Pakenham's cultural integrity.



**STAY UP TO DATE
ON OUR WORKS**

Scan the QR code or text **PAKENHAM** to **0428 581 917** to sign up for SMS updates about the Pakenham Level Crossing Removal Project



CONTACT US

contact@levelcrossings.vic.gov.au
1800 105 105

Level Crossing Removal Project
GPO Box 2392, Melbourne VIC 3001

Follow us on social media
[@levelcrossings](https://www.facebook.com/levelcrossings)



Translation service – For languages other than English, please call 9209 0147.

Please contact us if you would like this information in an accessible format.

If you need assistance because of a hearing or speech impairment, please visit [relay.service.gov.au](https://www.relay.service.gov.au)