



KEON PARADE, RESERVOIR

# COMMUNITY CONSULTATION REPORT

OCTOBER 2022



# Contents

Project overview	2
Why the Keon Parade level crossing needs to go	3
Consultation	3
What we heard	4
What's important to you	5
What the new station precinct will deliver	6
Look and feel	8
Thank you and next steps	9
Project timeline	9
Connect with us	9

## Project overview

As part of the Victorian Government's commitment to remove 110 level crossings by 2030, we're removing the dangerous and congested level crossing at Keon Parade and we're building a brand-new Keon Park Station.

Building a rail bridge over Keon Parade will improve safety for drivers, pedestrians and cyclists and it will relieve congestion, making travel times more reliable.

The modern Keon Park Station will be in a new location on the south side of Keon Parade to improve access to the station, connections between train and bus services, Johnson Street and Keon Parade shops and eateries, and JC Donath Reserve.

The additional benefits of the rail bridge design include new local connections for residents, students and workers from

Reservoir and Thomastown, walking and cycling paths, a landscaped forecourt and recreational space for picnics, and a new signalised pedestrian crossing across High Street at Hughes Parade.

The Keon Parade level crossing removal is part of an ongoing investment to upgrade the Mernda Line including removing six level crossings and building seven new stations.

### Project benefits



New 750-metre rail bridge to take trains over Keon Parade



New modern Keon Park Station south of Keon Parade



Landscaped areas surrounding the station precinct including a picnic area to enjoy with friends and family



Improved safety and accessibility for pedestrians, bus and train passengers, cyclists and motorists



New local connections, including a new signalised pedestrian crossing at the intersection of Hughes Parade and High Street



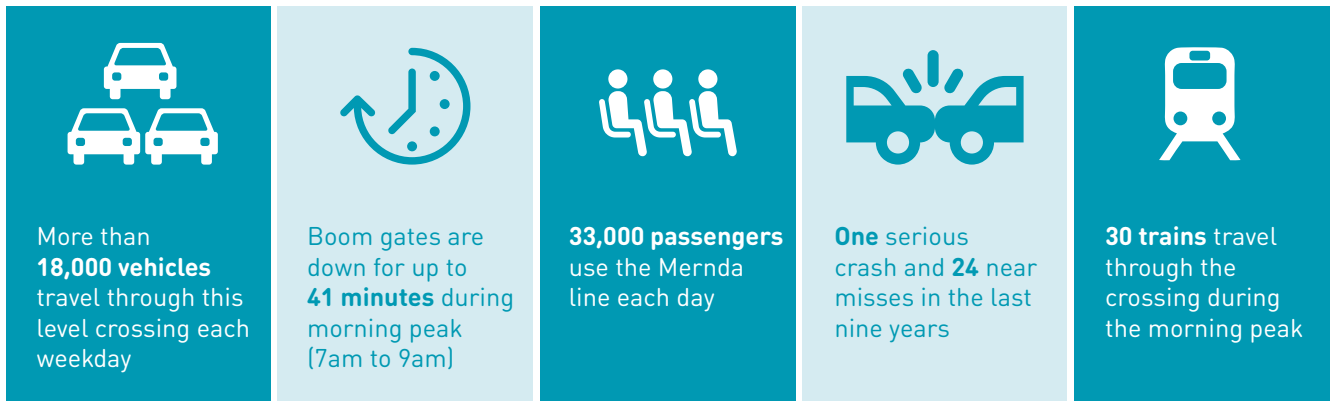
Ease congestion on the busy M80 Ring Road and 902 SmartBus Route



Improved traffic flow and less congestion on roads



# Why the Keon Parade level crossing needs to go



## Consultation

We asked locals from Reservoir and Thomastown for feedback on the early concept designs. We asked you to share your ideas on landscaping, recreational space and the look and feel of your new Keon Park Station precinct.

The consultation was open from 1 September to 25 September 2022. Feedback was collected via an online survey on the Engage Victoria website, an online information session and talking to passengers at our Keon Park Station pop-up. The survey was also available in Italian, Simplified Chinese, Vietnamese and Greek.

To engage with the local community, we promoted our engagement through social media, advertising and multiple email updates to project subscribers to encourage participation in the design survey.

Your responses have helped us understand how you'd like your new Keon Park Station to look and feel.

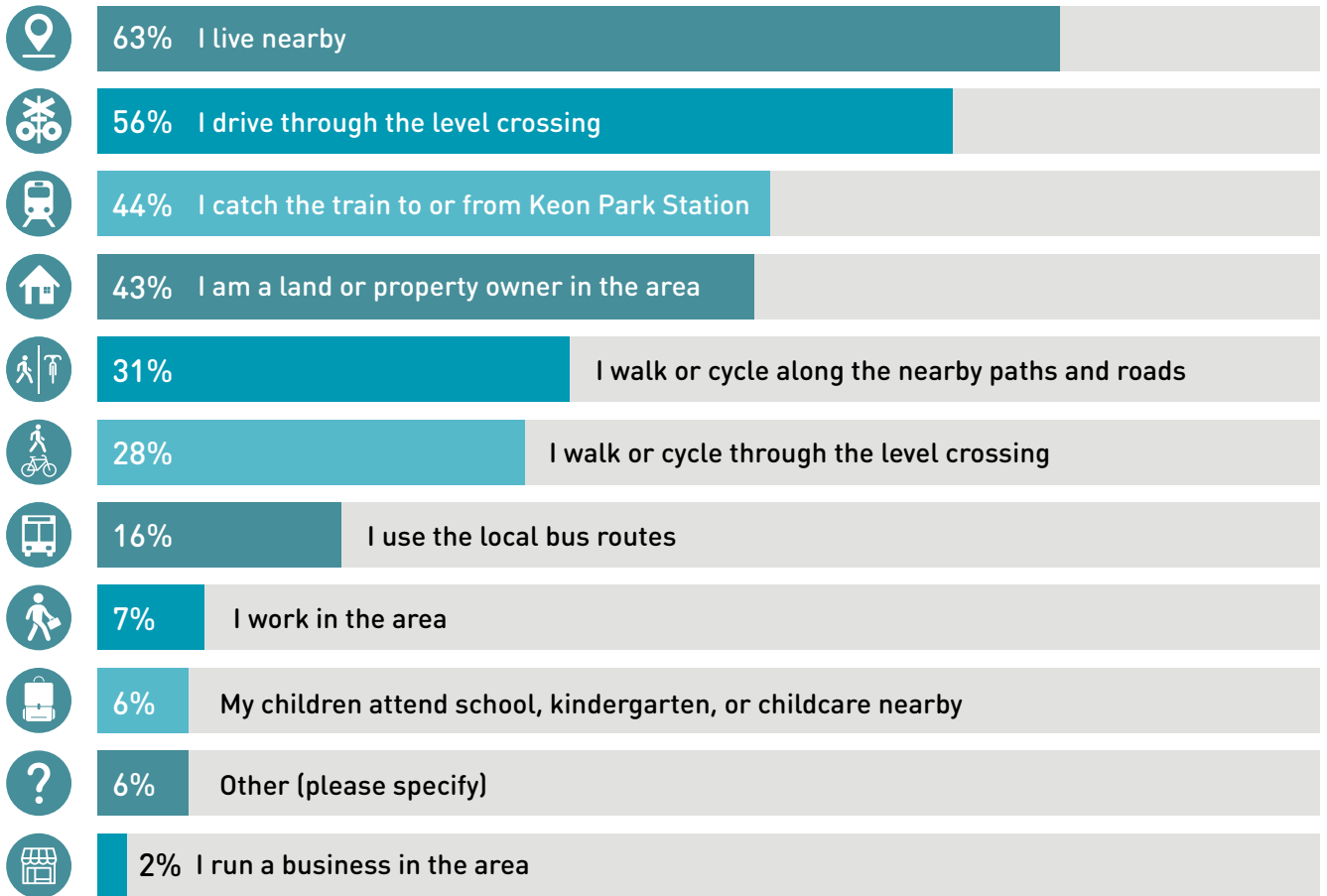
These combined with our technical and engineering requirements have helped shaped final designs.



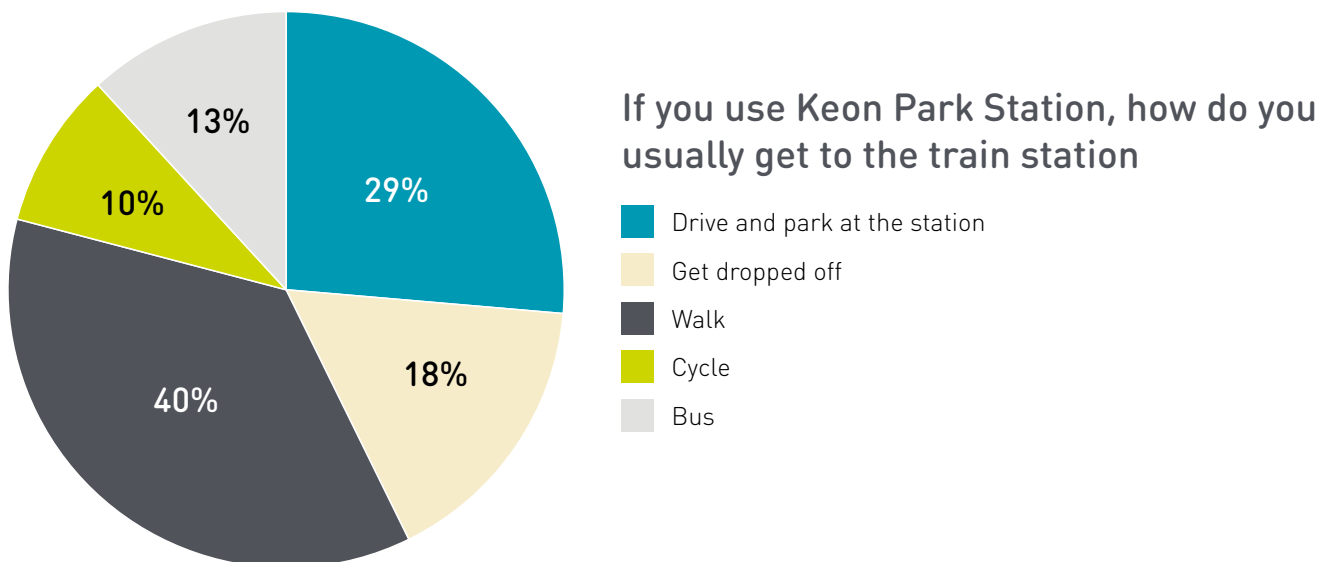
# What we heard

We asked you to share your preferences, insights and feedback on the project.

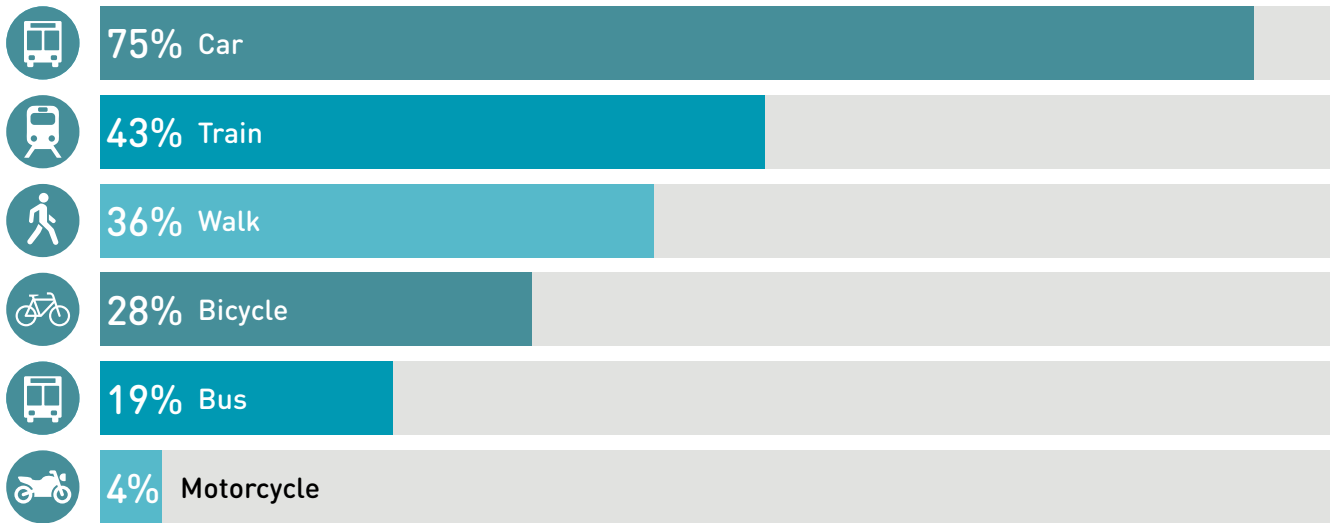
## What is your interest in the Keon Parade Level Crossing Removal Project?



Please note that respondents could select more than one answer to this question



## How do you usually get around the Thomastown and Reservoir area?

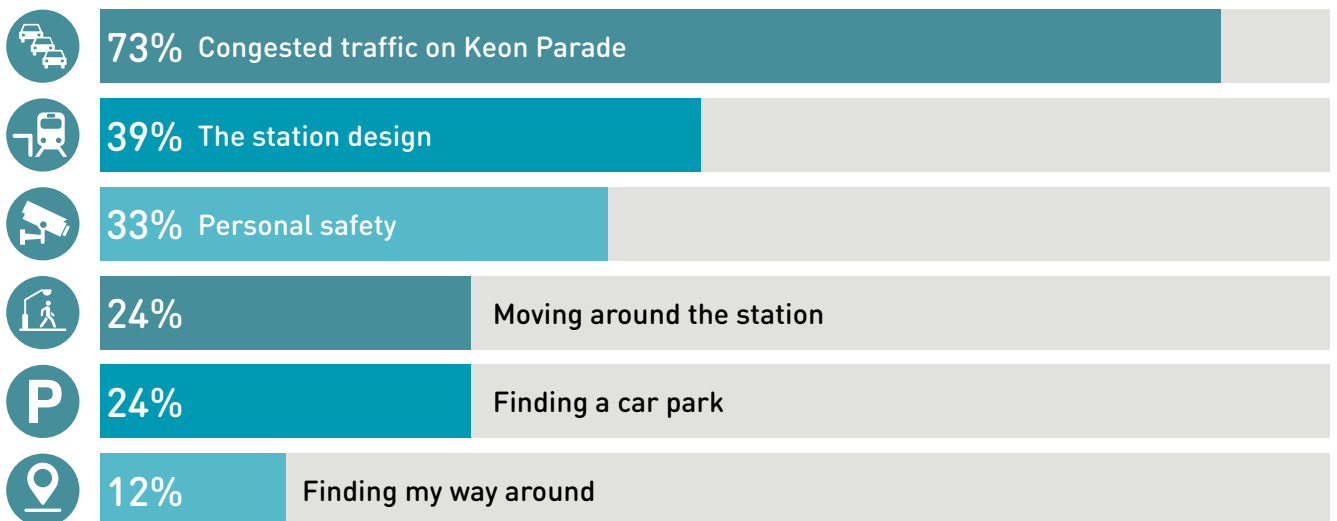


## What's important to you

What would you like to see changed in and around the new Keon Park Station precinct?



## Is there anything you find challenging about the area?



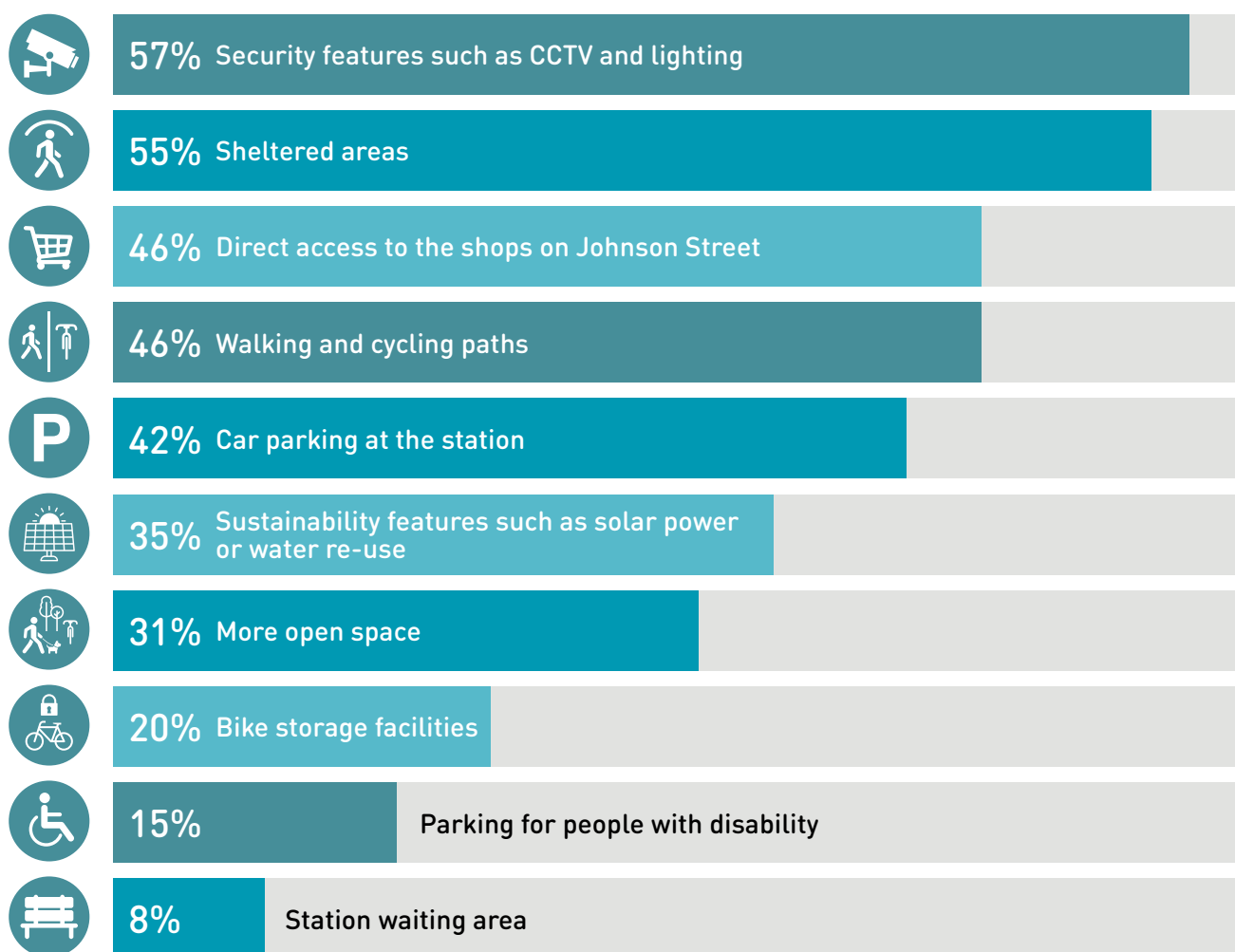
# What the new station precinct will deliver

## Better traffic flow

We heard that traffic congestion on Keon Parade and around Keon Park Station is a big concern for you.

Removing the dangerous level crossing will help ease congestion and keep you moving. In addition, final designs include an extended bus bay under the new rail bridge on Keon Parade, separating buses from cars in this busy area.

## What do you consider to be the most important features of the new station?





*New Keon Park Station forecourt.  
Artist impression – subject to change.*

## Safety and secure car parking

Many of you raised concerns about feeling safe at the station, particularly at night. The final designs of the station precinct feature more lighting, CCTV and easily accessible car parks.

You told us you wanted improved parking facilities in the station precinct. The final design will have two car parks with no overall loss of car parking.

The car park on High Street will have more than 100 car spaces and a pick-up and drop-off zone. Drivers will be able to enter and exit via left turn in and out from High Street and there is an additional exit onto Johnson Street.

The car park on Keon Parade will have more than 60 car spaces and drivers will be able to enter and exit from Keon Parade.

'Please make the station space as safe and welcoming as possible.'

- Survey respondent

'Looking forward to changing my home station from Thomastown to Keon Park due to safety concerns travelling home after uni at night!'

- Survey respondent

'Designs are looking great!'

- Survey respondent

## Safer station access and better connections

Getting to and from the station easily by foot, bike, bus or car was an important factor in the station design.

We're making it safer and easier for passengers travelling by bus to Keon Park Station by:

- moving the Keon Parade bus stops closer to the station and improving the signalised pedestrian crossing at Keon Parade
- adding a new bus stop at Hughes Parade, along with a signalised pedestrian crossing across High Street at the intersection of Hughes Parade.

If you're walking or riding your bike to the station, we've added new dedicated footpaths and cycling paths that lead you directly and safely to the station. We've also added new Parkiteer secure bike storage for up to 26 bikes.

Drivers will be able to access the station safely with dedicated, well-lit footpaths from the two station car parks. An improved signalised pedestrian crossing at Keon Parade will allow passengers using the northern car park to access the station safely.

## Direct access to the station from Johnston Street

You told us how important it was for you to access local shops, cafes and eateries from the station. Final designs have now been refined to include a new shared walking and cycling path to Johnston Street, giving you direct access and a new connection to local businesses.

## Station forecourt

The new station precinct will include a generous forecourt with extensive seating, with some undercover. Landscaped areas will also feature throughout with trees and shrubs between the new station, High Street and Keon Parade. There'll also be new shared walking and cycling paths through the area making it easier for everyone to access the new station.

'Best stations have easy access for compromised mobility people, bike lock up areas, natural shade and constructed weather protection... Plenty of outdoor seating...'

- Survey respondent

'Long overdue, great idea to relocate the station to the Southside.'

- Survey respondent

North-east view. Keon Park Station precinct on High Street.  
Artist impression - subject to change.





# Look and feel

We asked you to select design options that reflect your preferences for the look and feel of the new Keon Park Station precinct.

You let us know that you'd like more seating in the area and the seating to be sheltered from the weather.

More neutral and natural seating materials were the most preferred to blend in with the local landscape.

Almost half of you chose to have a picnic area to be included in final designs. Your new picnic area will be close to Johnson Street and JC Donath Reserve.

The picnic area will include tables and seats and greenery, creating an inviting place for you to enjoy with friends and family.

'Outside seating or grass space to enjoy a takeaway meal from the local food businesses.'

- Survey respondent

'Using a mixture of trees that can grow tall and create high impact, not just low lying grasses that are always overused in spaces.'

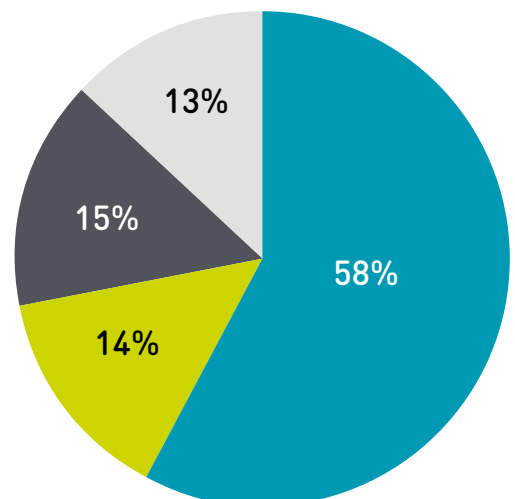
- Survey respondent



## Greenery

- A combination of native trees, shrubs and flowering plants
- Native bush and flowering plants
- Native canopy trees and low-lying shrubs
- Shady trees and grass

More than half of you told us you wanted the station precinct area to have a combination of native trees, shrubs and flowering plants. We've incorporated this feedback into the landscaping plan, using natives to provide a green gateway to the new station.



# THANK YOU AND NEXT STEPS

Thank you to everyone who provided feedback. We've used your feedback, along with technical and engineering investigations to further refine final designs.

You can view the final designs of the new Keon Park Station and station precinct at [levelcrossings.vic.gov.au/projects/keon-parade-reservoir](https://levelcrossings.vic.gov.au/projects/keon-parade-reservoir)

Early works will start later this year and major construction is scheduled to begin in 2023, with the new Keon Park Station open and level crossing gone in 2025.

## Keeping in touch

The best way to stay up to date on the project is by signing up to email updates.

Subscribe at [levelcrossings.vic.gov.au/subscribe](https://levelcrossings.vic.gov.au/subscribe) and select **Keon Parade**. To receive SMS updates text **KEON** to **0428 581 917**.

For more information visit [levelcrossings.vic.gov.au/projects/keon-parade-reservoir](https://levelcrossings.vic.gov.au/projects/keon-parade-reservoir)

Send us a private message on our Level Crossing Removal Project Facebook page. Contact our call centre on **1800 105 105** or email [contact@levelcrossings.vic.gov.au](mailto:contact@levelcrossings.vic.gov.au)



**STAY UP  
TO DATE ON  
OUR WORKS**

Scan the QR code or text **KEON** to **0428 581 917** to sign up for SMS updates about the Keon Parade Level Crossing Removal Project

## Project timeline

- 2021**
  - Site investigations
  - Technical assessments
- 2022**
  - Community engagement
  - Further engineering investigations
  - Project designs released
- 2023**
  - Construction begins
- 2024**
  - Construction
- 2025**
  - Boom gates gone for good
  - New Keon Park Station open

*Timeline above subject to change*



## CONTACT US

[contact@levelcrossings.vic.gov.au](mailto:contact@levelcrossings.vic.gov.au)

1800 105 105

Level Crossing Removal Project  
GPO Box 2392, Melbourne VIC 3001

Follow us on social media  
[@levelcrossings](#)



**Translation service** – For languages other than English, please call 9209 0147.

Please contact us if you would like this information in an accessible format.

If you need assistance because of a hearing or speech impairment, please visit [relayservice.gov.au](http://relayservice.gov.au)