

# SOUTH YARRA (EASTERN PORTAL) PRECINCT

## COMMUNITY REFERENCE GROUP

23 November 2021





# CONSTRUCTION UPDATE - RIA

# CONSTRUCTION PROGRESS

RIA



# CONSTRUCTION PROGRESS

RIA



# 24-hour rail works

November and December 2021



## – Upcoming rail works:

### – 24-hours

- 8pm Friday 26 November to 3am 29 November
- 8pm Friday 3 December to 3am Monday 6 December
- 8pm Friday 10 December to 3am Monday 12 December
- 8pm Tuesday 14 December to 3am Friday 24 December

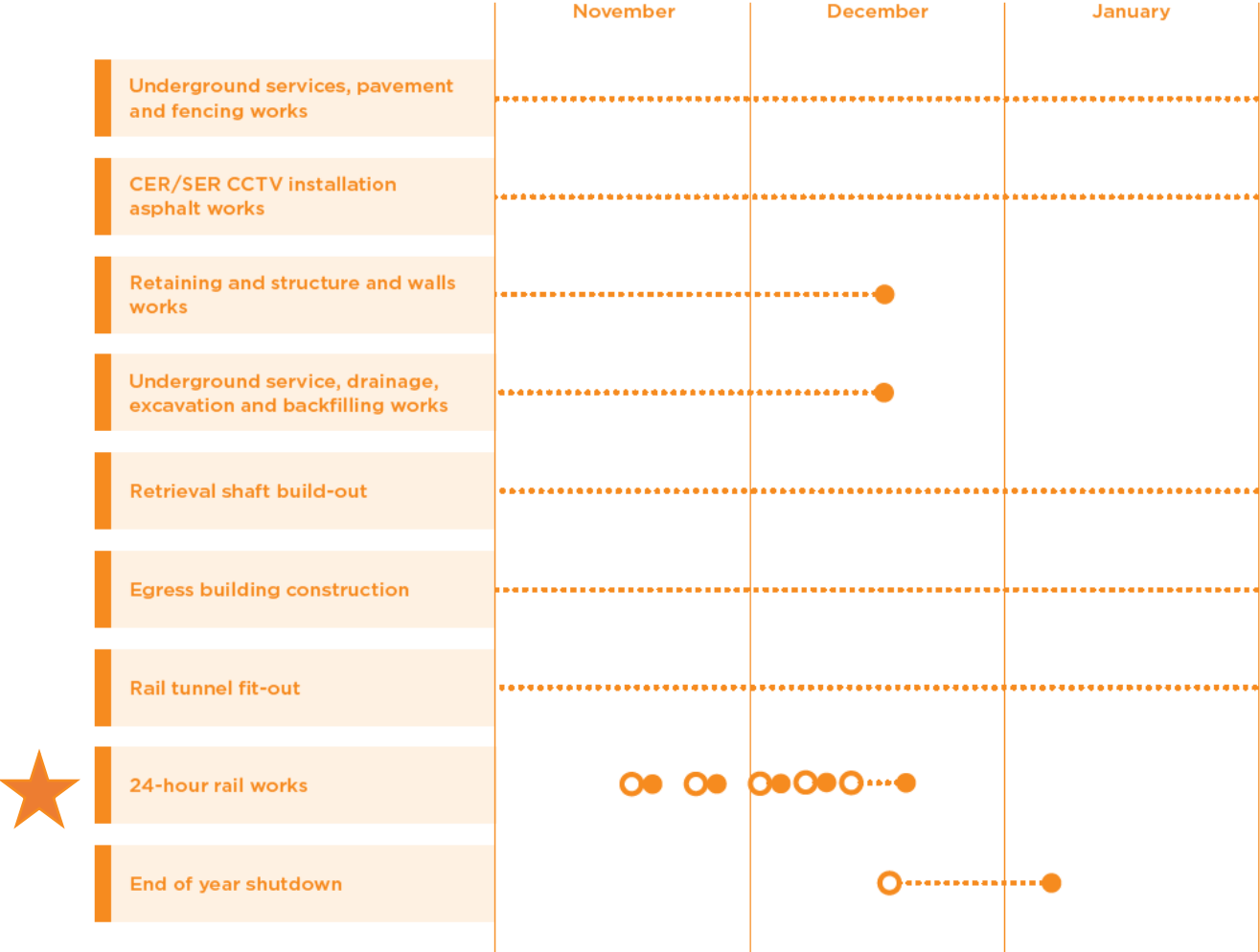
### – Overnight works

*Works will begin after the last passenger service each evening and will cease before first passenger service each morning*

- Each night from Monday 29 November to Friday 3 December

RIA and MTM are working together to support local businesses in the lead up to Christmas and are in discussions with the Toorak Road Traders Association.

# CONSTRUCTION LOOKAHEAD FOR 2021



★ 24/7

RIA last day on site: 24 December 2021

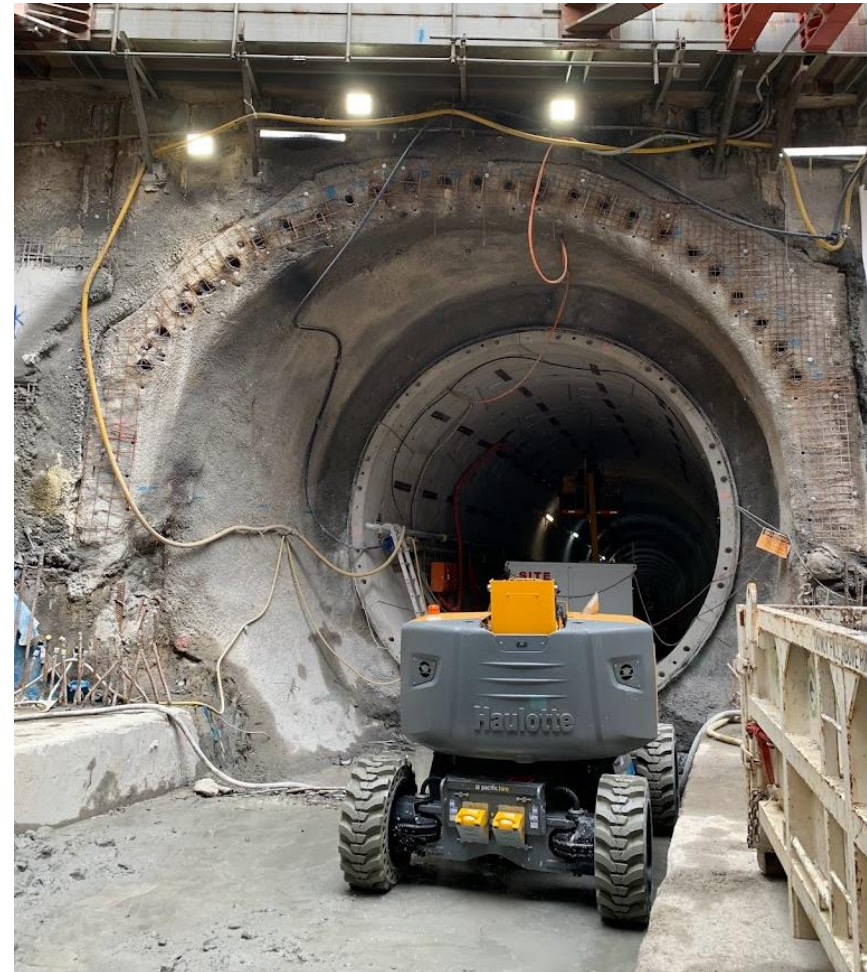


# CONSTRUCTION UPDATE - CYP

# RETRIEVAL SHAFT BUILD OUT



- In the retrieval shaft, the breakout of the remaining TBM infrastructure will be completed this week
- Work to construct lining walls continue
- Work is also ongoing to construct the permanent tunnel lining where the stub tunnel once was.



*Temporary TBM infrastructure breakout*



# TRACK FOUNDATION AND RAIL TUNNEL FIT-OUT

Concrete invert construction



- The tunnel invert between Eastern Portal and Anzac Station is now complete in both eastbound and westbound tunnels
- Early stages of rail tunnel fit-out from the retrieval shaft continue
- Tunnel invert construction continues between Town Hall Station and Anzac Station.



*Example rail tunnel fitout works – Arden Station to Western Portal*

# TRACK FOUNDATION

Decline structure



- Over 60% of the track foundation concrete has now been poured in the decline structure
- These concrete pours will resume in December and continue through until January.



*Concrete trackform in decline structure*

# NEW SITE FACILITIES

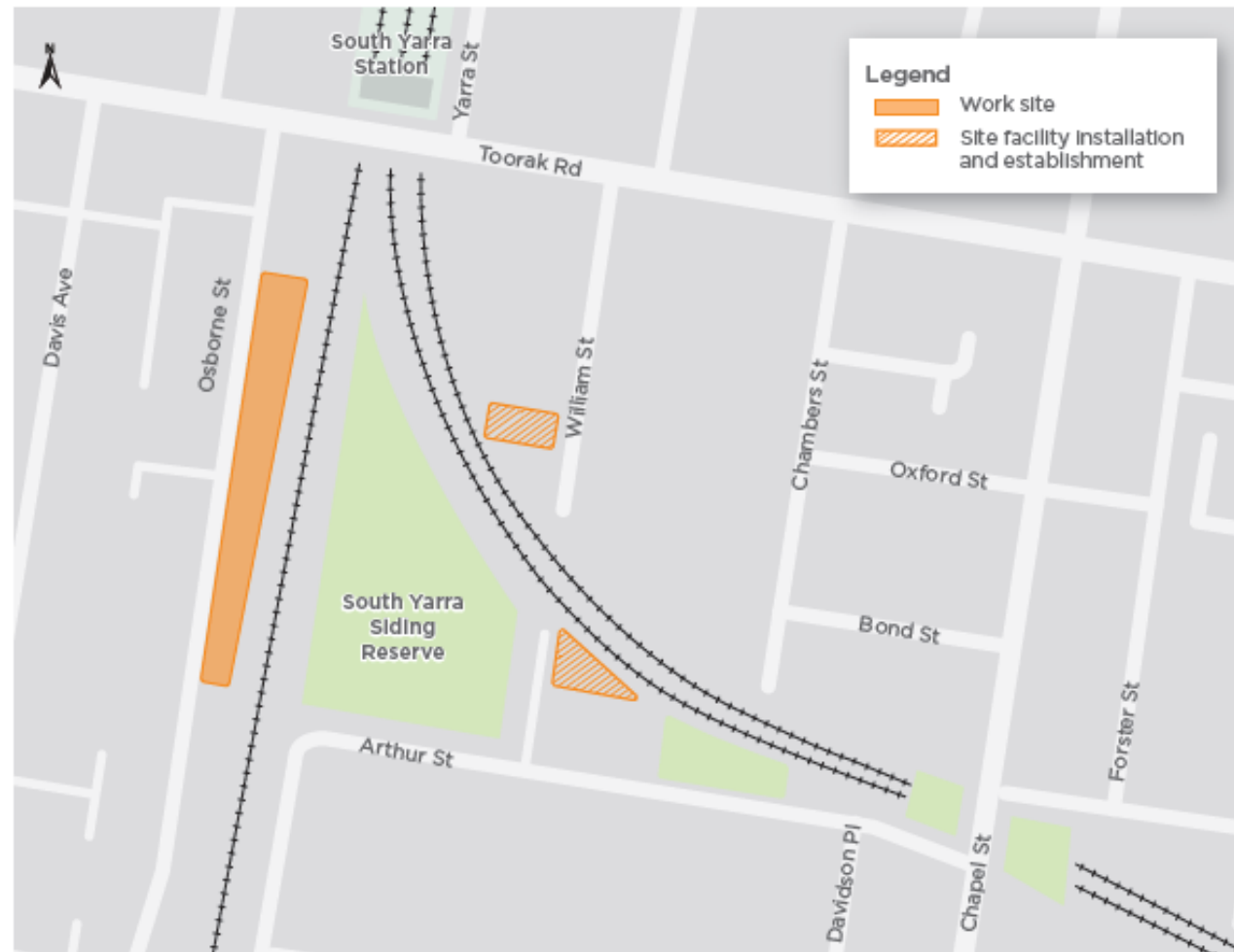
William Street



- As the retrieval shaft gets built out, it will become unavailable to use for deliveries into the tunnels
- To allow rail tunnel fit-out works to continue while the retrieval shaft is built out, the William Street Bridge will become the primary access point for these works
- A crane will be set up on the bridge to lower equipment to workers below, who will then take it into the tunnels
- New site facilities will be installed at the southern end of the William Street Bridge for rail tunnel fit-out workers to use
- Early site establishment will begin next week. The first of these site sheds will be delivered to site in December, with installation continuing in January and February to create a small new shed compound.

# SITE ESTABLISHMENT

William Street



Indicative only



# COMMUNITY & COMMUNICATIONS UPDATE

# COMMUNICATIONS

Recent and upcoming communications



The November construction update has been distributed to residents and businesses and will be available online.

The update includes information about upcoming works, including 24-hour rail occupations

If you haven't already, we encourage registering to Metro Tunnel's eNews to receive important project updates in South Yarra. Scan QR code below to register.



# TRAFFIC & TRANSPORT

Recent and upcoming traffic and transport changes



## **Bus replacements**

- Buses will be replacing trains on the Frankston/Dandenong and Sandringham lines during the 24-hour rail works. Visit [ptv.vic.gov.au](http://ptv.vic.gov.au) for more information.
  - 8pm Friday 26 November to first train 29 November
  - 8pm Friday 3 December to first train 6 December
  - 8pm Friday 10 December to first train 12 December
  - 8pm Tuesday 14 December to first train 24 December

## **Single-lane closure**

- Traffic management will be in place to facilitate local vehicles from entering and exiting the road. Local residential access will be maintained at all times.



# PROJECT WIDE UPDATE

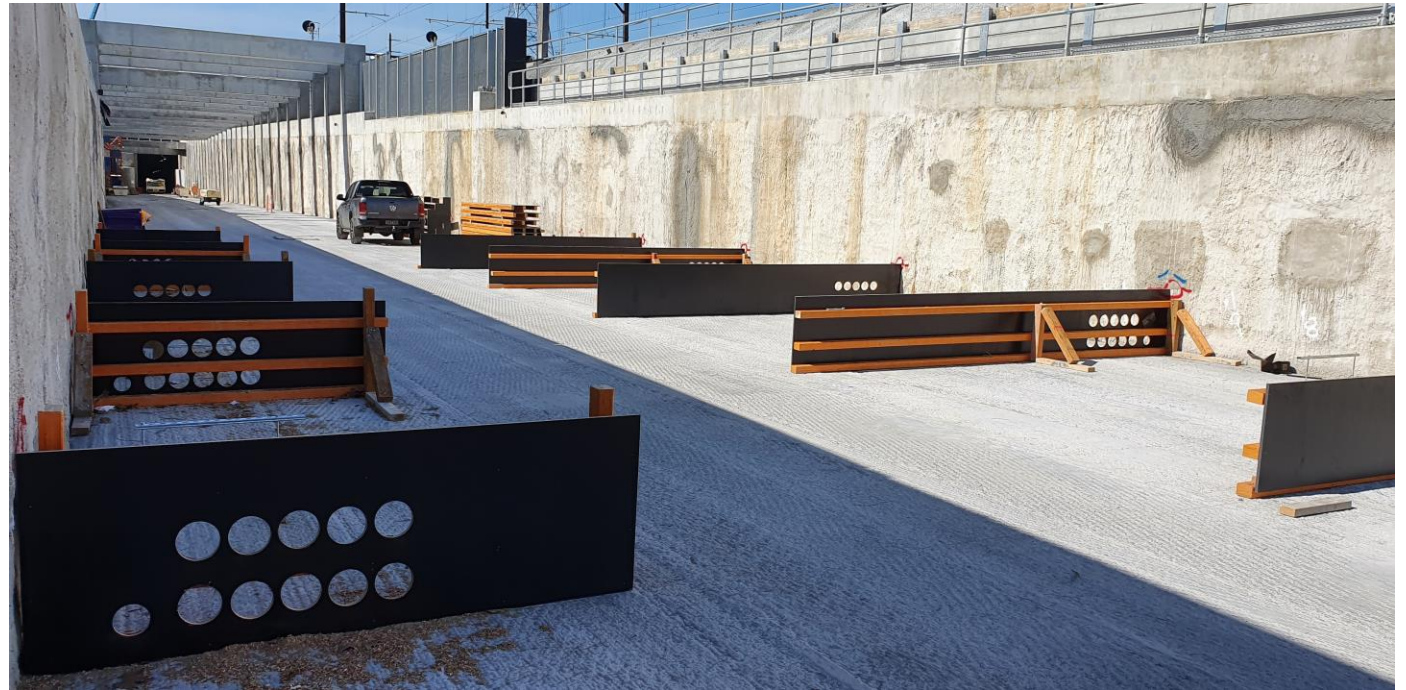


# KENSINGTON RIA



# WESTERN PORTAL – KENSINGTON CYP

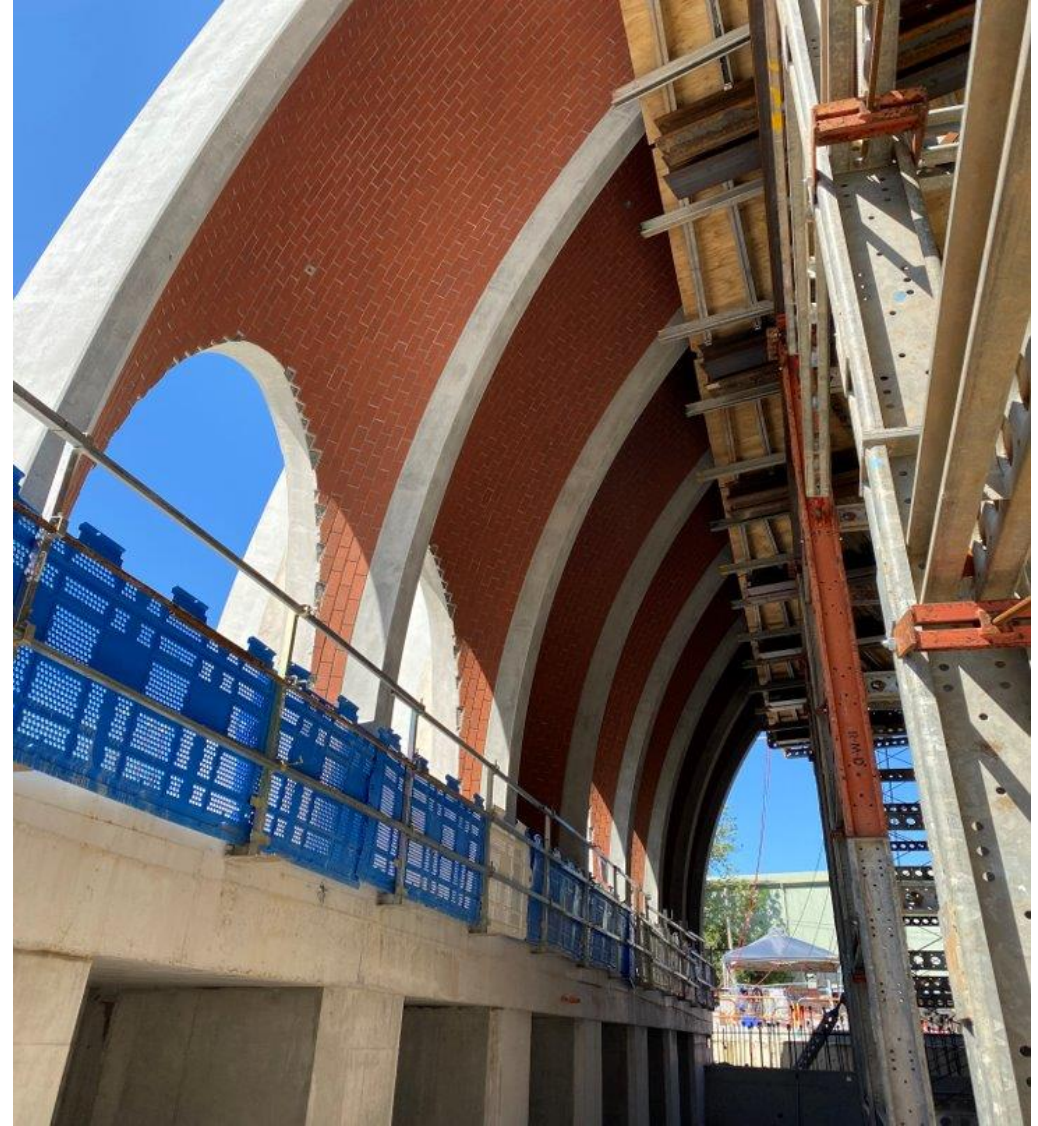
- Work inside the egress building continues, with the last blockwork being installed, and painting ongoing
- The architectural fins on the outside of the building will begin to be installed next month
- In the decline structure, concrete pours are continuing to construct the trackform. This will eventually be what the rail track is installed on.



*Decline structure works at Western Portal*

# ARDEN STATION

- All 45 segments of the Arden Station entrance arches have now been installed
- Over track exhaust installation is complete
- Approximately 80% of the platform has been constructed, with works ongoing
- Blockwork installation and mechanical, electrical and plumbing installation is continuing.



*Station entrances arches being installed*

# PARKVILLE STATION

- Concrete pours to construct the roof slab of the station box are continuing. Seven of nine pours have been completed. The roof slab is expected to be complete by late 2021
- Concrete pours for the B1 to roof lining walls at the east end of the station box are ongoing
- Excavation of the chiller plant commenced in mid October and will continue until mid to late November
- Excavation of the future station entrance at Grattan St west is now complete, with permanent structure works continuing.



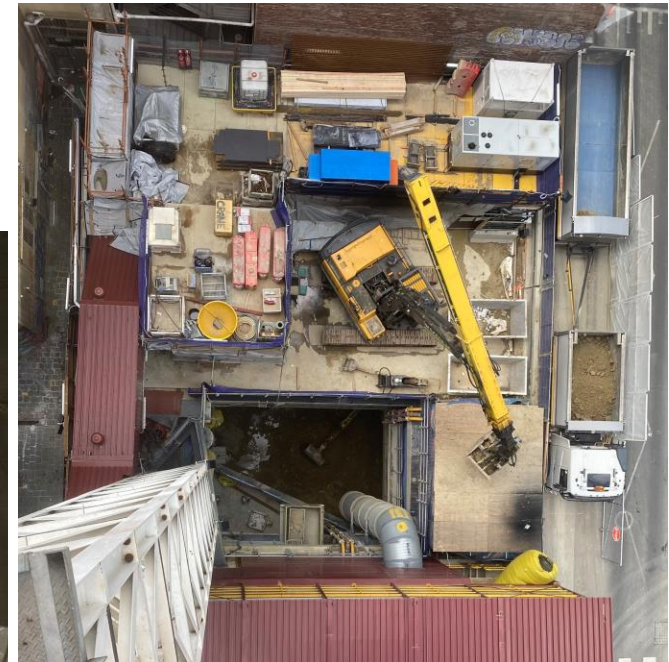
*Aerial view of Grattan Street East site*

# STATE LIBRARY STATION

- Shaft construction is progressing at the La Trobe Street site as around-the-clock excavation continues. Above ground, steel fixing is now underway for the buildout of the station entrance
- At the Little La Trobe Street site, the B3 slab was poured in October as excavation and FRP works continue
- Underneath Swanston Street, waterproofing and reinforcements are being continually installed along the platform rail tunnels and central cavern arch.



*Trinocular cavern from the La Trobe Street adit*



*The Little La Trobe Street site from above*

# TOWN HALL STATION

- Under Swanston Street, the full extent of Town Hall Station's 29m wide trinocular cavern is now visible with the completion of excavation
- The focus underground will now be on removing the 'shell' separating the central cavern and rail platform tunnel and on structures and lining works
- At the Flinders Quarter site, excavation is continuing on B3 level
- Roof slab works over the future pedestrian connection to Flinders Street Station are continuing with waterproofing underway
- At City Square, site works are underway in preparation for installation of two tower cranes, which will dismantle the City Square acoustic shed and support station entrance build out.



*The excavated final section of the Town Hall Station Cavern*

# ANZAC STATION

- The entire station box has now been completely excavated. Since excavation is now complete, the base slab can be finished. There are three concrete pours remaining to construct the remainder of the base slab
- D-wall demolition is ongoing on both sides of the station box, connecting the concourse level of the station to two of the three station entrances
- In the southern end of the station box, blockwork and core walls continue to be constructed. First stage painting has also begun
- In the tram interchange station entrance, the roof slab is now complete. The team has commenced waterproofing the slab before the area is backfilled.



*Base slab construction, concourse level and roof slab of station box*



**Questions?**