



Kabul Spices

Under new management, Kabul Spices is bringing new and traditional flavours to Pakenham, keeping people coming back for more.

Meet the Menhaj family, owners of authentic Afghan restaurant located at 33 John Street in Pakenham. The Menhaj's moved to Australia in 2012 and brought with them their passion for quality home-cooked food, friendly service, and a love for sharing their culture with others.

'My mum makes the best Afghan food, and we want people of all cultures to experience our food and support us,' said daughter Naila.

The whole family enjoys welcoming new customers into their restaurant and sharing their culture and most loved dishes. Kabuli Palaw (traditional rice) and Manto (Afghan dumplings) are two of the most popular dishes on the menu.

'It has been great seeing so many new faces in the community come try our food, including those from the Level Crossing Removal Project. Thank you for supporting us,' said Naila.

With the new Pakenham Station opening in 2024, the Menhaj family is excited about what the project will do for the community and how it will invite new customers, cultures and business into town.

Feeding Pakenham's growing community, Kabul Spices is the place for comforting home-cooked food.

Visit Kabul Spices at 33 John Street, Pakenham.



Naila and her father Uddin from Kabul Spices.

TRAFFIC CHANGES

At times, we will temporarily close roads and lanes. Impacted residents and traders will be notified of traffic disruptions.



Ryan Road works

Ongoing monitoring and maintenance of Ryan Road will continue while we construct the new East Pakenham Station.



Henty Street works

Henty Street eastbound lane will be closed until mid 2023. There will be changes to the way you travel.

For the safety of the community and workforce, please follow the detour signage and instructions from traffic management when travelling around the project area. See map below.



Savage Street pedestrian crossing

Pedestrian access to the Pakenham shopping precinct will be maintained via the Savage Street pedestrian crossing.

At times, we will need to close the pedestrian crossing.

A free shuttle service will be available for residents.



Project Timeline

- ✓ **2020**
 - Site investigations
 - Technical and engineering assessments
 - Community engagement
- ✓ **Early 2021**
 - Community engagement
 - Further engineering investigations
- ✓ **Mid 2021**
 - Station designs announced
- ✓ **Late 2021**
 - Open space community consultation
 - Early works
- **2022**
 - Construction
- **2023**
 - Construction
- **2024**
 - Boom gates gone for good
 - Pakenham and East Pakenham stations open
 - Community space open for locals to enjoy

*Timeline subject to change.



Hardstand construction works at Pakenham Station



LEVEL CROSSING REMOVAL PROJECT

Hi rail excavator preparing for rail dragging at East Pakenham

Keeping in touch

To stay up to date subscribe to our email updates, at levelcrossings.vic.gov.au/subscribe and sign up to the Pakenham Level Crossing Removal Project.

If you have any questions or would like more information, call 1800 105 105 or email contact@levelcrossings.vic.gov.au 24 hours a day, seven days a week.

Follow us on social media or send us a private message on our Facebook page.

We have a dedicated team working with the community and train passengers to keep you informed about what's happening during each stage of construction.



STAY UP TO DATE ON OUR WORKS

Scan the QR code or text **PAKENHAM** to 0428 581 917 to sign up for SMS updates about the Pakenham Level Crossing Removal Project



CONTACT US

contact@levelcrossings.vic.gov.au
1800 105 105
Level Crossing Removal Project
GPO Box 2392, Melbourne VIC 3001

Follow us on social media @levelcrossings



Translation service – For languages other than English, please call 9209 0147.

Please contact us if you would like this information in an accessible format.

If you need assistance because of a hearing or speech impairment, please visit relayservice.gov.au



SIGN UP FOR PROJECT UPDATES
levelcrossings.vic.gov.au

LEVEL CROSSING REMOVAL UPDATE

PAKENHAM
SEPTEMBER 2022

Tracking on in Pakenham

We're removing the dangerous and congested level crossings at McGregor Road, Main Street and Racecourse Road in Pakenham and building new stations at Pakenham and East Pakenham. The Victorian Government has fast tracked these level crossings for removal, with 22 level crossings being removed on the Pakenham line to make it boom gate free by 2025.

We've started building the foundations of the 2.5 kilometre rail bridge with hardstand and piling works. Hardstand works prepare sites for heavy machinery and piling works involves drilling deep underground foundations to support new rail bridges. These works will continue along the rail corridor between McGregor Road and Ryan Road until mid 2023.

Piling will help prepare for the installation of the elevated rail bridge later this year and into next year.

All three level crossings in Pakenham will be gone for good, making journeys on Melbourne's busiest train line faster and local roads safer.

Why these level crossings need to go

- 63,000 vehicles use these crossings each week day
- Boom gates down for more than 30 minutes of the morning peak
- 170 Metro and V/Line trains pass through the level crossings daily
- 90,000 passengers use the Cranbourne-Pakenham line each day







NWP8427

CONSTRUCTION HAS TAKEN OFF

We started major construction works in Pakenham this winter. Crews worked 24 hours a day in the rail corridor carrying out overhead electrical works, removing old train tracks and sleepers, installing new cables and continuing preparation works for the new site at East Pakenham Station.

We're making lots of progress on-site. Check out these facts and figures.

-  Renewed 5000 tonnes of ballast and soil from underneath the rail line
-  Removed 1600 timber sleepers and recycled 250 concrete sleepers
-  Installed 800 metres of new fencing along the tracks
-  Removed and recycled 2.5 kilometres of track used to bypass another train
-  Installed and commissioned 3 kilometres of new cables



Renewing ballast and soil from underneath the rail line at East Pakenham



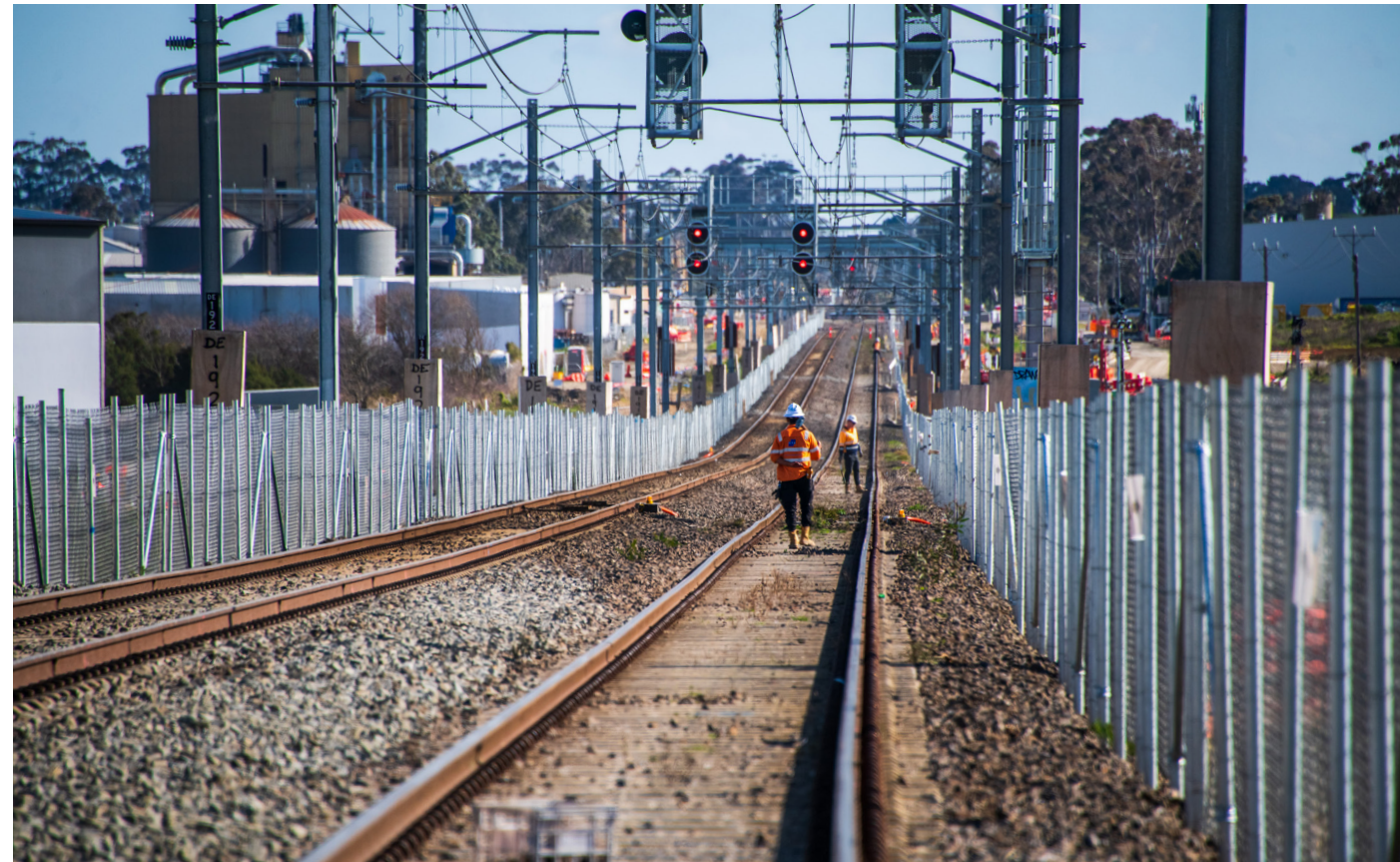
Removing track and sleepers at Main Street level crossing



Removing track sidings and preparing the site at Pakenham Station



Overhead works west of McGregor Road.



Fencing along the rail corridor

BUILDING SOLID FOUNDATIONS

Before we can build the bridge, we need to establish solid foundations for each bridge pier. In August we started work on the foundations of the new rail bridge over McGregor Road, Main Street and Racecourse Road. This involves piling and hardstand works.

Hardstand works

Hardstand works involve creating a safe and stable surface for heavy construction equipment. Works include excavation, delivery of materials and soil compaction to ensure ground stability.

We'll install around 74 piles along the rail corridor between McGregor Road and Racecourse Road. Specialised construction machinery is needed to complete piling works and can cause vibration and noise.

Piling works

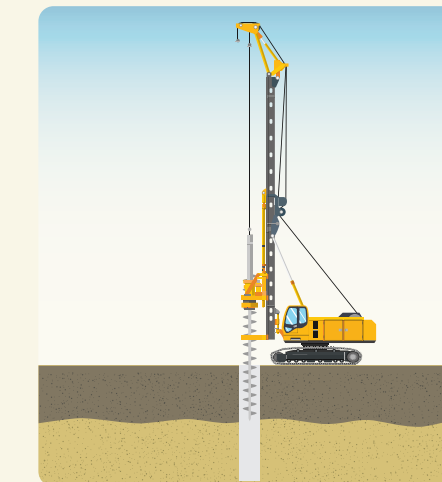
Piles are deep underground foundations that support new rail bridges. Piling works involve drilling deep holes into the ground. A cylindrical steel cage is inserted into the hole and filled with concrete to form a pile.

When piling ends, the rail bridge and elevated structures will start to come to life for everyone to see.

To learn more about how we'll build the rail bridge, scan the QR code to read our factsheet.

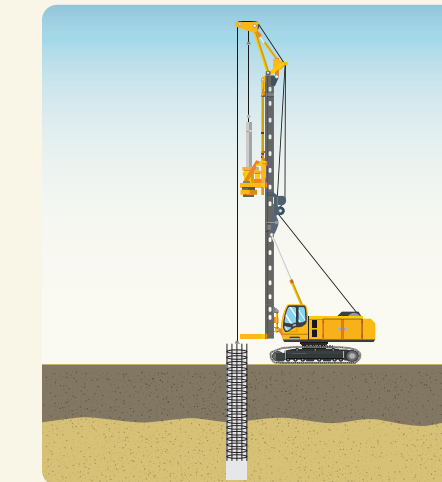


A step-by-step guide to piling



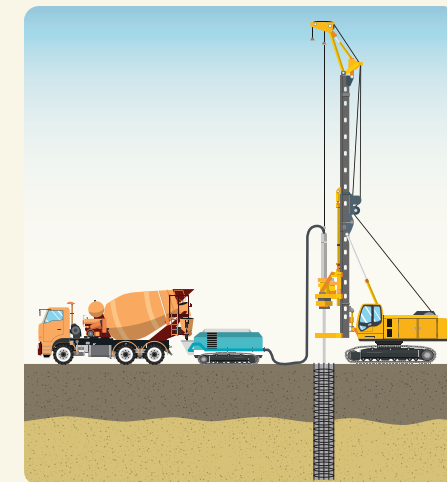
Drilling the holes

Drilling circular holes as deep as 35 metres for the length of the new rail bridge. A liquid glue is then applied to the inside of the holes to help stabilise the soil.



Steel reinforcement

A cylindrical, steel cage is lowered into the hole to secure and reinforce the pile.



Concrete backfill

Concrete is pumped into the hole and is left to set. Once set, the pile is cut off at the exact level for the pier installation to commence. The piles will support the weight of the new rail bridge.



Repeat

This process will continue along the length of the rail bridge until we reach a total of 74 piles.