

Realigning the Koonung Creek in Doncaster



Fact Sheet
April 2026



Artist's impression of Koonung Creek bridge to Eram Park, Box Hill North

We're realigning a section of the Koonung Creek, between Tram and Middleborough roads, to make space for new lanes on the freeway.

From May 2026, we'll realign a section of the creek in Koonung Creek Linear Park to create space to build new lanes and a walking and cycling bridge as part of the Eastern Freeway Upgrades.

The realigned section will feature better bank stability and allow more sunlight to reach the water, creating better habitat for wildlife. It also ensures the creek remains accessible to the community to experience and connect with the area once the project is complete.

As part of the creek realignment, we'll build brand new walking and cycling bridge over the Koonung Creek.

Before we remove the existing bridge, we'll install a temporary pedestrian bridge so people can continue moving safely through the area.

During the realignment works, we'll begin building the foundations for the new bridge that will connect to Eram Park. This involves using a piling rig to drill deep holes and fill them with concrete and steel reinforcements to create a strong base before the new bridge is installed.

The new bridge will improve local connections for pedestrians and cyclists and is designed to meet the latest accessibility standards.

Construction timeline

May 2026

- Excavation for creek realignment begins
- Temporary walking and cycling bridge construction begins
- Koonung Creek Trail closes to Church Road

June 2026

- Piling foundations for the new permanent walking and cycling bridge over Koonung Creek to Eram Park

July 2026

- Koonung Creek Trail reopens
- Water redirected using a bypass pump
- Backfill of existing creek alignment
- Temporary walking and cycling bridge over Koonung Creek opens

August 2026

- Bypass pumping completed and creek flowing on new alignment

Late 2026

- Creek realignment complete
- New bridge over Koonung Creek to Eram Park opens

Sign up for updates
bigbuild.vic.gov.au/roads-subscribe



Works in Koonung Creek Linear Park

We'll use an excavator to remove soil and build 180 metres of new creek realignment, north of the existing creek alignment. The excavated rocks and dirt will be stored within our worksites and covered until they're ready to be reused to backfill the old creek alignment.

We'll build a dam at each end of the work area to create a safe, dry working area. Qualified aquatic ecologists will be on site to carefully relocate any wildlife further downstream prior to dewatering.

A pump system will run day and night to push the creek water downstream through a flexible hose. This will make sure that the creek can continue to flow while we're working.

Once we've redirected the water, we'll excavate the remaining sections of the creek. The dams will then be removed to allow water to flow through the new creek alignment.

The previous creek alignment will then be backfilled using the stockpiled dirt and rock. We'll reinstate the area and prepare it for future construction works.

The creek will be monitored regularly throughout our works to ensure we meet our strict environmental requirements, and erosion and sediment controls will be in place.



Changes to the Koonung Creek Trail

To safely realign Koonung Creek, we'll first build a temporary walking and cycling bridge over the creek and path diversion in Eram Park. These temporary changes will maintain connectivity for walkers and cyclists while we work around the creek.

The temporary bridge will be built around 20 metres north of the existing bridge and will be around 4.5 metres wide to provide enough space for both pedestrians and cyclists. The bridge will arrive in sections, be assembled on site, before being lifted into place by a crane.

From May 2026, a section of the Koonung Creek Trail between our worksite and Church Road will be temporarily

closed while we build the temporary bridge and complete the diversion. The Koonung Creek Trail between Wetherby Road and the bridge over the freeway will remain open during this time.

Please follow all signs and directions from traffic controllers when moving through the area.

We know the community regularly use the dog off-leash areas in Koonung Creek Linear Park, and we've planned our works to keep as much of this space open as possible. Most of the off-leash area between Church Road and the current Koonung Creek bridge will remain accessible during construction of the temporary bridge.



Koonung Creek

What to expect

We'll work in our established worksite in Koonung Creek Linear Park, near Norfolk Circuit in Doncaster. You'll notice workers, construction vehicles and machinery in the area.

We'll use excavators, cranes, piling rigs and concrete trucks to complete our works. There will be increased levels of noise, dust and vibration at times. You may also notice visual changes due to tree removal.

The bypass pump system will run day and night, powered by a silenced generator to minimise noise while keeping water flowing.

There will be diversions of the Koonung Creek Trail throughout our works. Please follow all signage and directions from traffic controllers.

How we'll manage impacts

As with all construction projects, there will be some noise, dust and vibration impacts to the community. These impacts will be closely managed and must comply with the project's strict Environmental Performance Requirements (EPRs).

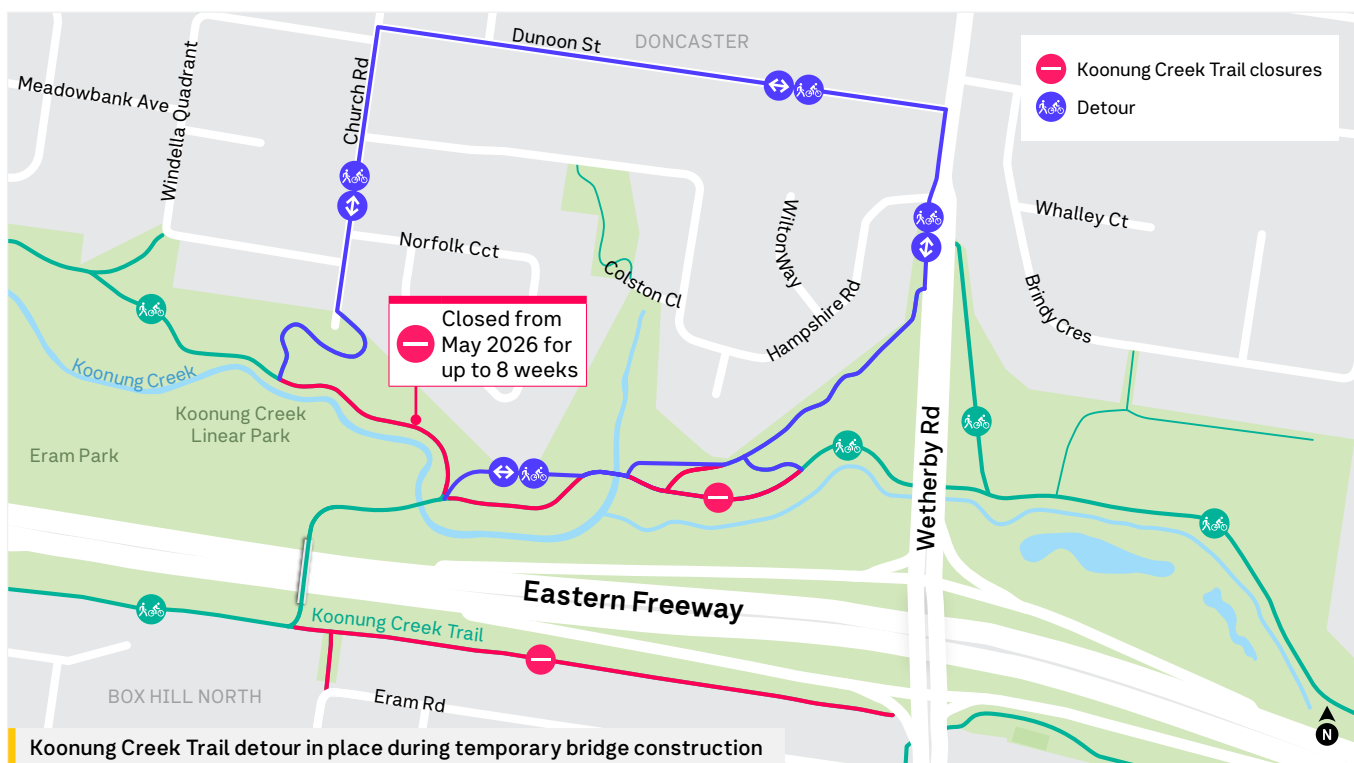
We'll work closely with impacted residents to provide additional information on works, timing and how we propose to manage the expected disruptions.

Supporting aquatic wildlife

This section of the Koonung Creek is home to a variety of aquatic species, including galaxias, yabbies, frogs, eels, rakalis and turtles. Protecting these species is an important part of how we plan and deliver our work.

To minimise impacts on wildlife during construction near waterways, we use a range of controls, including:

- installing mesh screens on pump intake hoses to prevent fish and other small animals from entering pumps
- ensuring a qualified aquatic ecologist available to safely relocate any wildlife found within the work area
- setting up clearly marked No-Go Zones to protect retained habitat areas
- refuelling equipment away from the creek to avoid any spills or contamination
- cleaning equipment before it arrives on site to prevent weeds or invasive species from entering the area
- regularly monitoring water quality downstream
- regularly inspecting and maintaining machinery and equipment used near the creek.



Koonung Creek Trail detour in place during temporary bridge construction

Fast facts

What is riparian planting?

Plants next to a waterway such as a creek are referred to as riparian. These plants help to stabilise the ground, reduce erosion and filter runoff before it reaches the creek. Riparian planting also provides essential food and habitat for insects, birds and other animals.

What is a dam and what is it made of?

A dam, also known as a cofferdam, is a barrier built to block the flow of water. We use sandbags to build these dams as they are easy to move when required and minimise the impact on waterway health.

How will you manage water flow during bypass pumping?

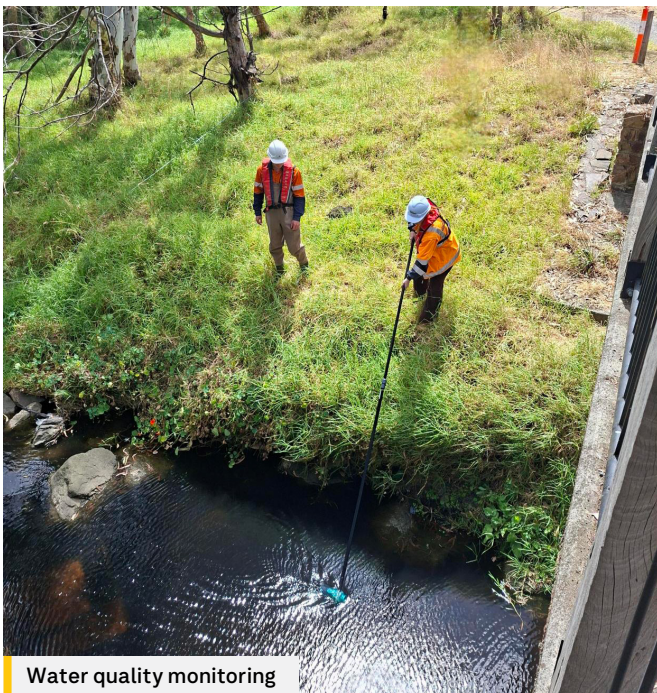
The intake hose of the pump system uses a sensor to determine the depth of the water and adjusts the flow rate accordingly. This means there is little change to the aquatic environment downstream, where the water re-enters the creek.

What is a silenced generator?

A silenced generator is a generator with additional noise-reducing features. The generators are surrounded by a casing made of noise-dampening materials.



Temporary creek crossing for construction vehicles



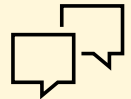
Water quality monitoring

When we'll be working

We'll carry out our works during the day, from 7am to 6pm.

We'll let you know ahead of time if we need to work at night. We'll have strict controls in place to manage potential construction impacts during night works.

If you have concerns about construction impacts, call us 24/7 on 1800 105 105.



Landscaping and planting

We'll replant in and around the creek in consultation with Melbourne Water and Manningham Council as the public land manager. We'll use a mix of native aquatic and riparian plants to improve biodiversity. Logs and woody debris will be placed at strategic locations to create habitat and access to the water edge for animals. Where possible, we'll reuse logs from the project to create these habitat zones.



Reused logs to support habitat rehabilitation

bigbuild.vic.gov.au/roads

contact@bigbuild.vic.gov.au



1800 105 105 (call anytime)



For languages other than English please call 9209 0147

Please contact us if you would like this information in an accessible format.

If you need assistance due to a hearing or speech impairment, please visit relayservice.gov.au