



TOWN HALL STATION COMMUNITY REFERENCE GROUP

CROSS YARRA PARTNERSHIP
FRIDAY 31 JANUARY 2020





TOWN HALL STATION COMMUNITY REFERENCE GROUP

Blythe Chidgey, Town Hall Station Stakeholder Engagement Manager, CYP D&C

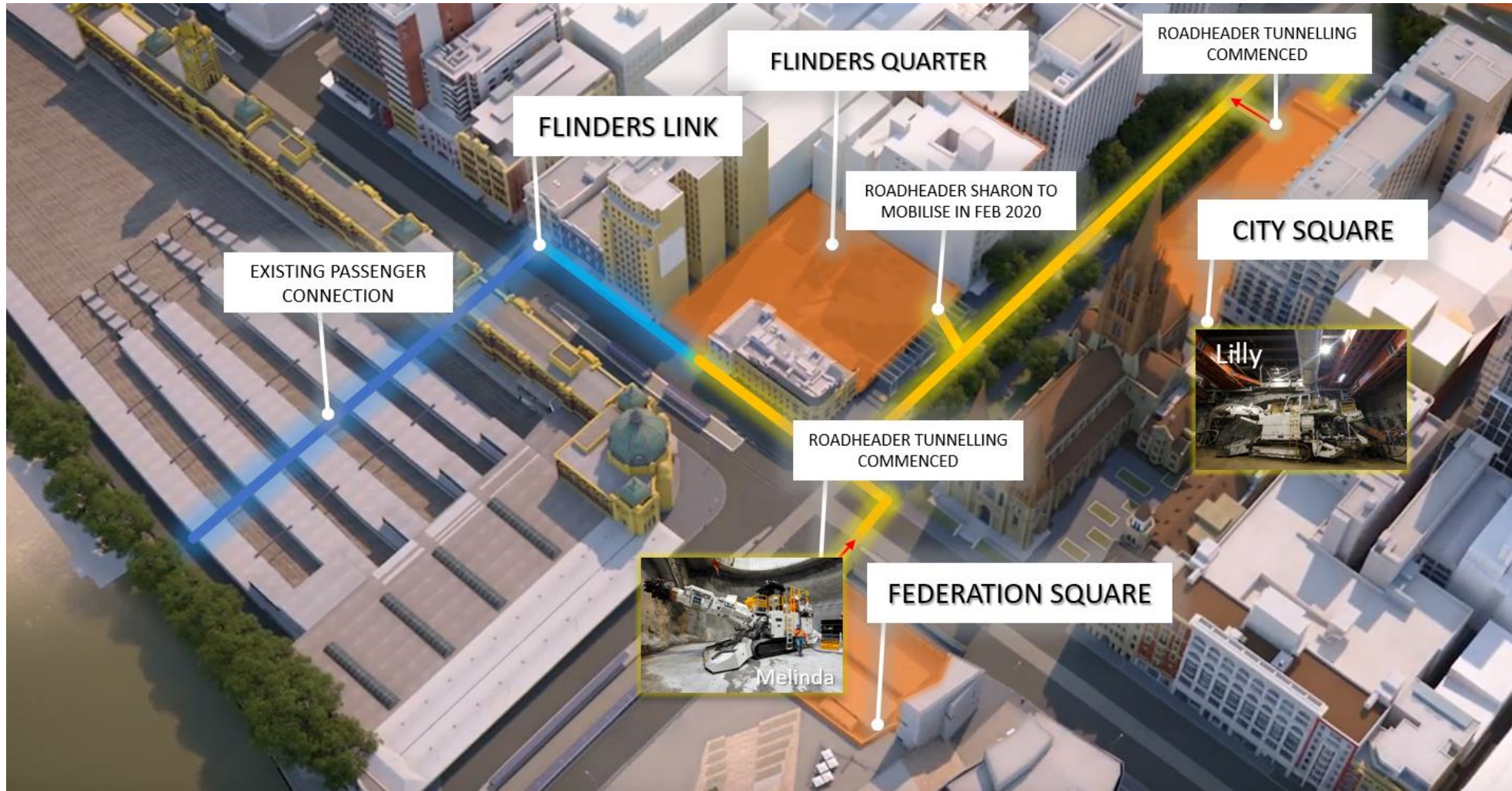


AGENDA

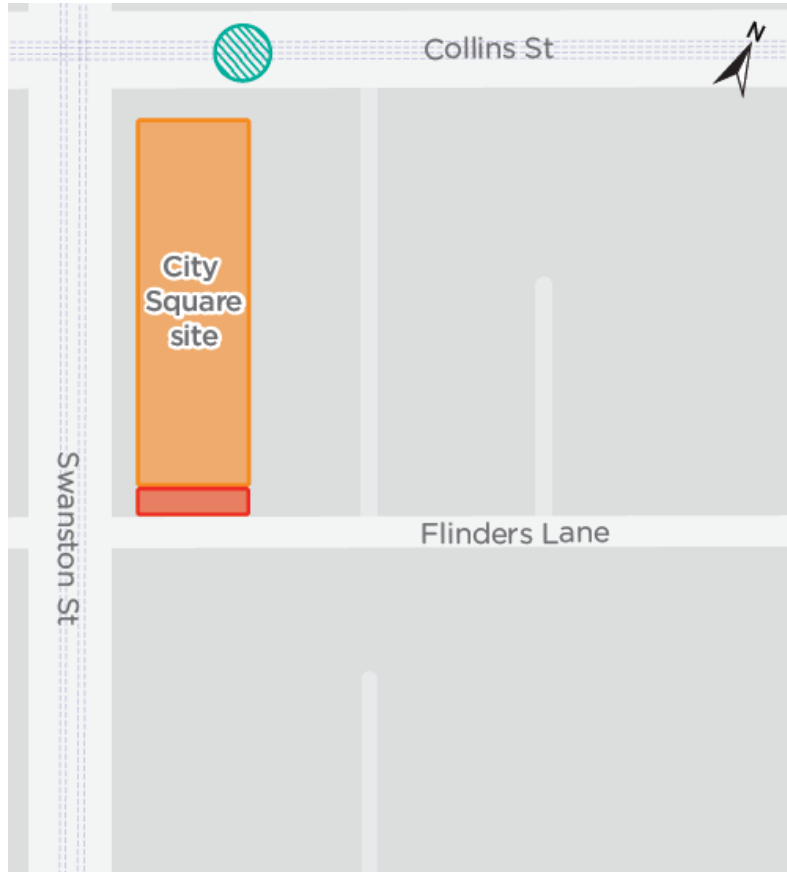


1. Town Hall Station Update

CBD SOUTH ROADHEADERS



GROUND MONITOR INSTALLATION

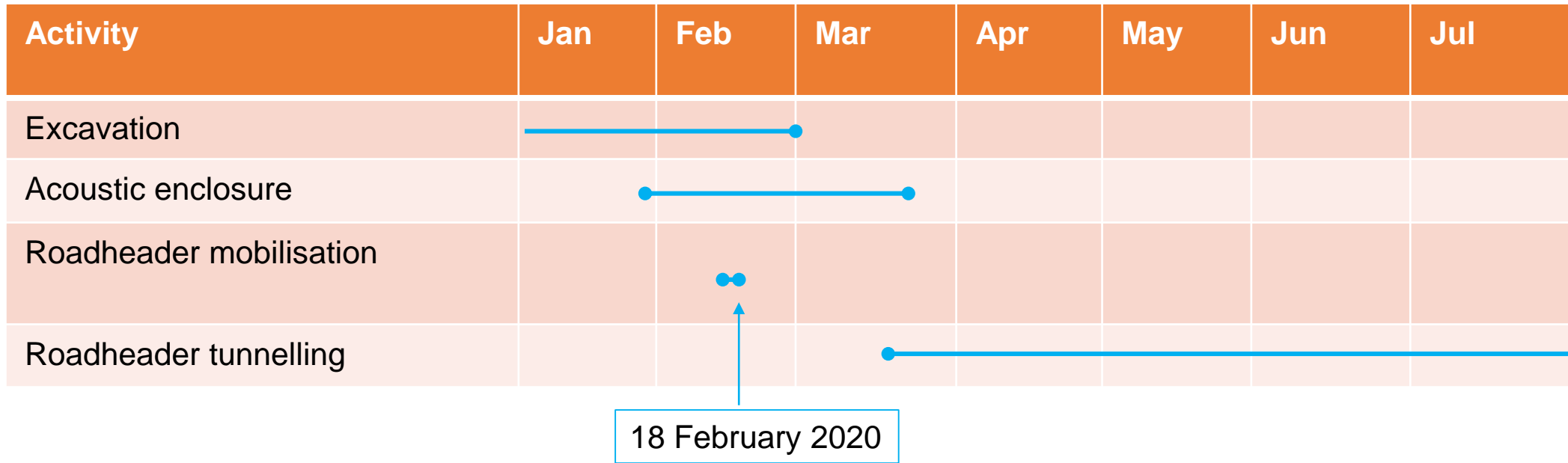


- 1am to 5am, Sundays to Thursdays
- From Sunday 9 to Thursday 20 February 2020

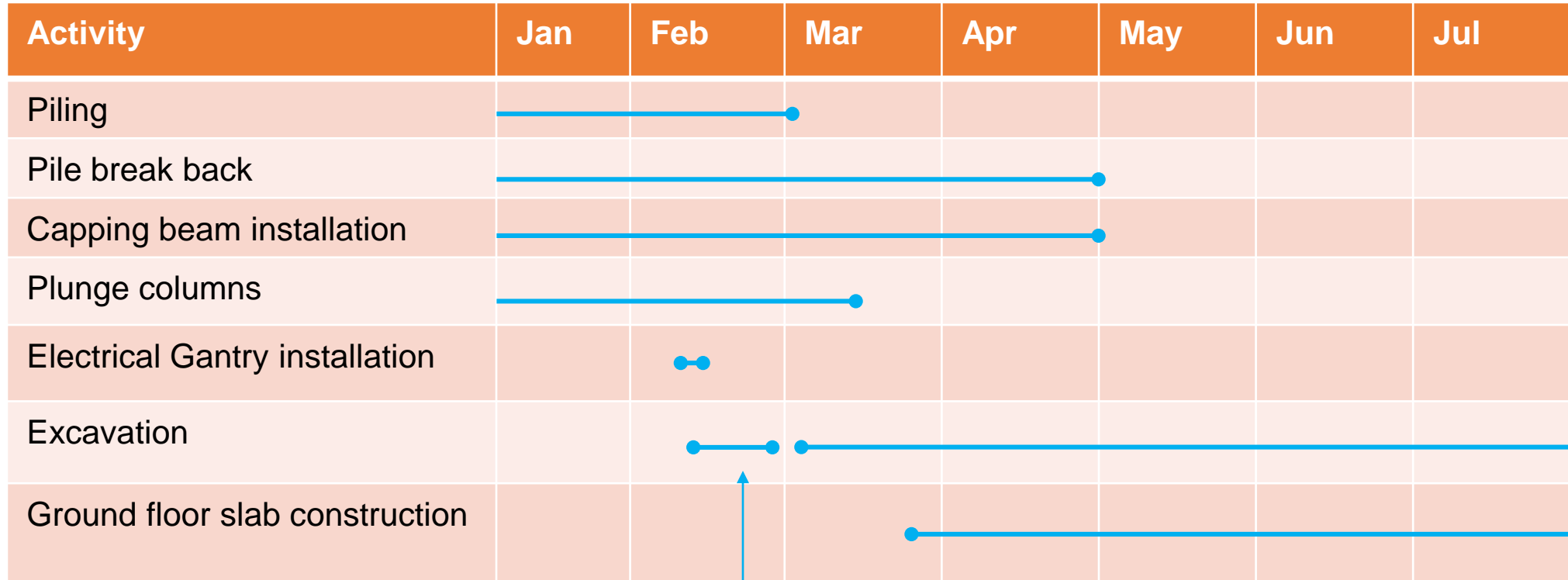
FLINDERS QUARTER



FLINDERS QUARTER – SHAFT A

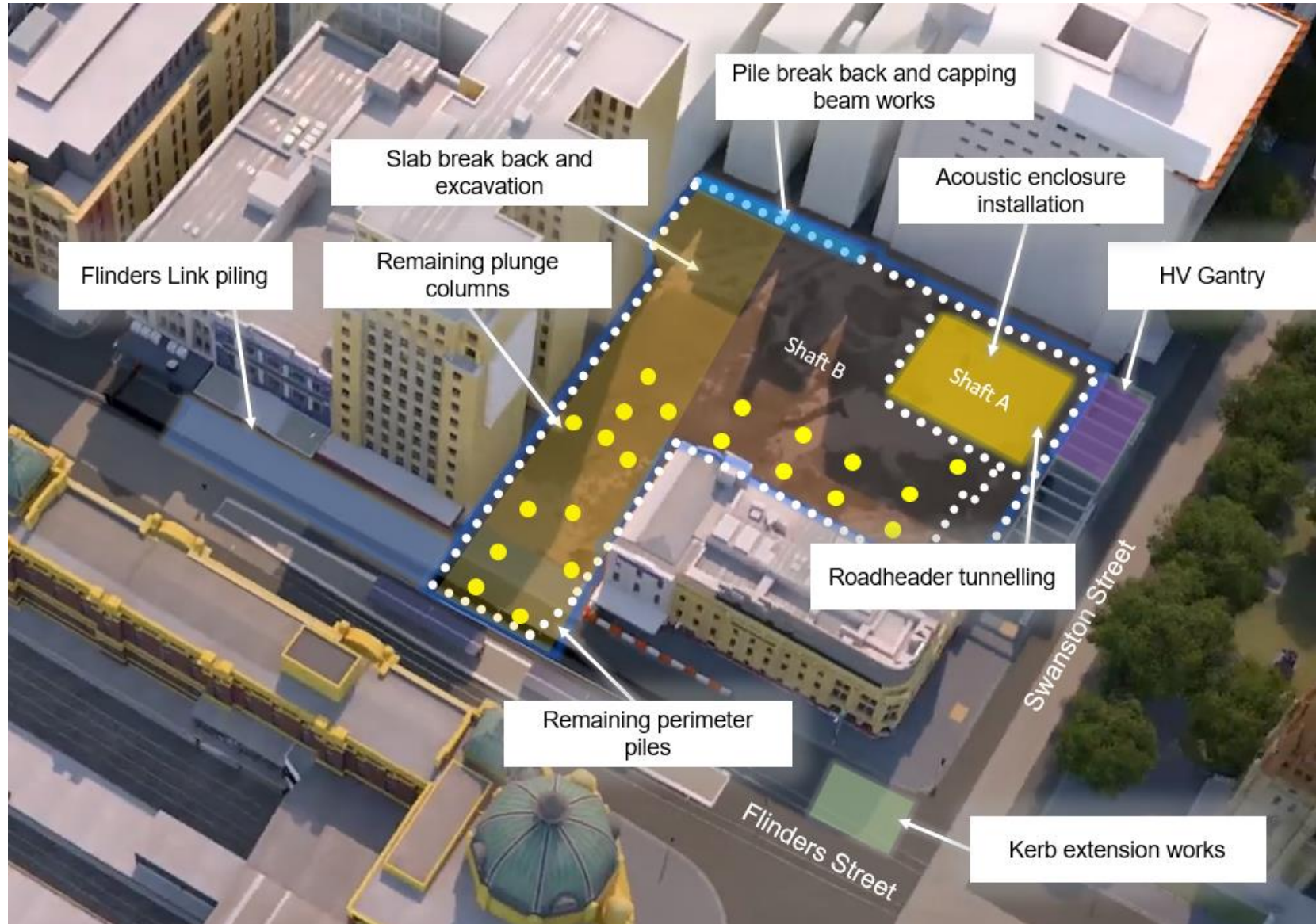


FLINDERS QUARTER- SHAFT B



Slab break back

FLINDERS QUARTER



FLINDERS QUARTER – OUT OF HOURS WORKS

Deliveries (ongoing)

- Monday to Saturdays, 5am to 7am

Oversized tunneling deliveries

- Scrubber delivery- Tuesday 18 February, 1am to 5am
- Roadheader delivery – Wednesday 19 February, 1am to 5am

Plunge columns

- Monday to Fridays, 7am to 10pm (*low noise clean up activities until 11pm as required*)
- Saturdays, 7am to 5pm

Spoil removal

- Sundays, 8am to 4pm until late-February

Clamshell Excavation

- Monday to Fridays, 7am to 10pm
- Saturdays, 1pm to 10pm

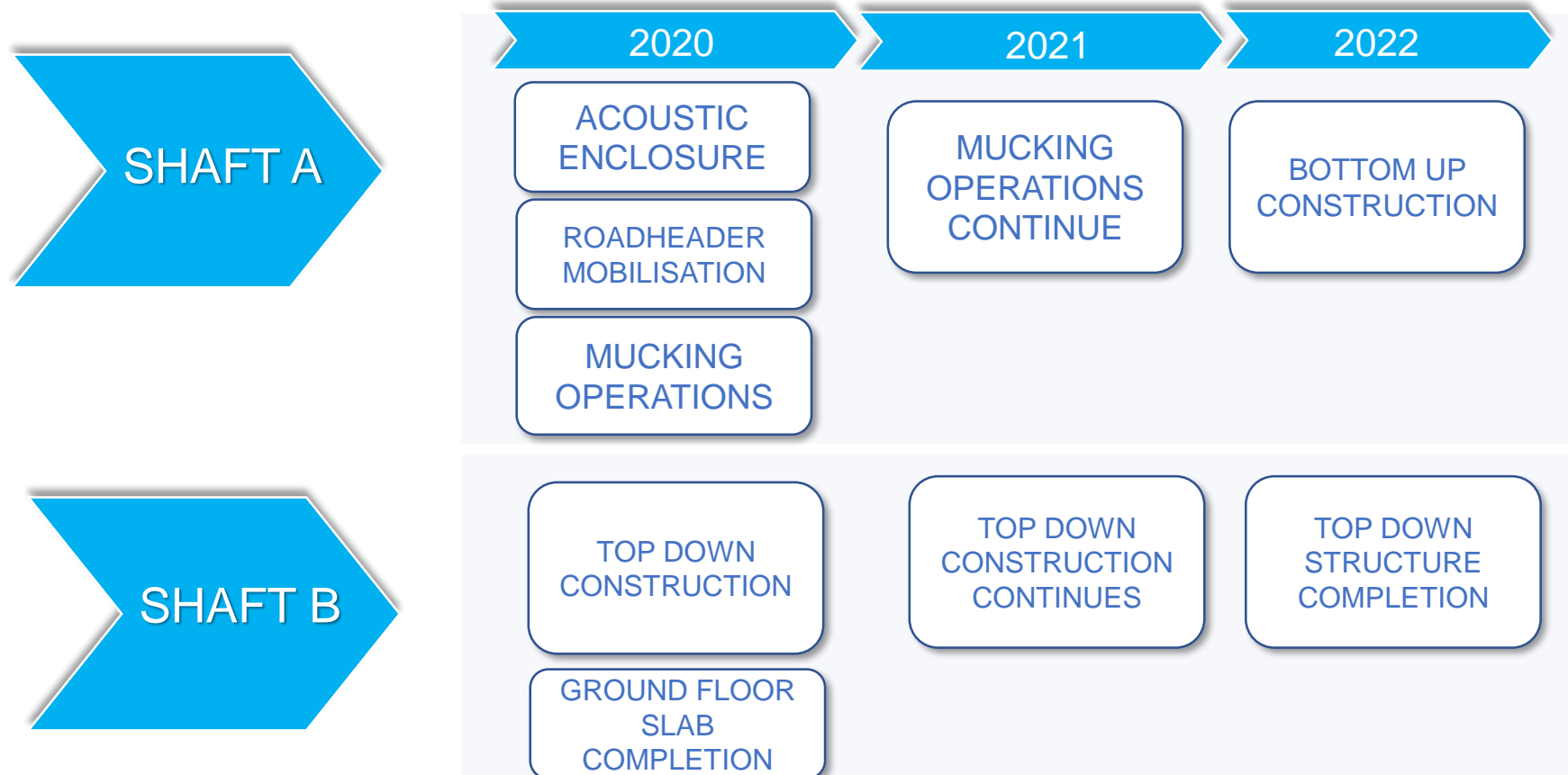
Amenity gantry maintenance works

- Between Monday 3 and Friday 7 February
- 10pm to 5am

Electrical gantry installation

- Between Tuesday 11 and Friday 14 February
- 10pm to 5am

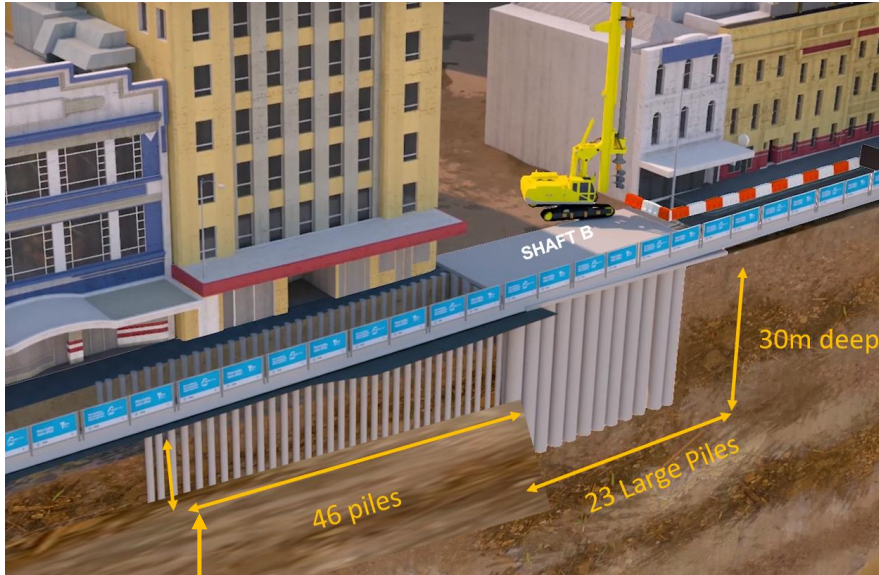
FLINDERS QUARTER LOOK AHEAD





FLINDERS LINK

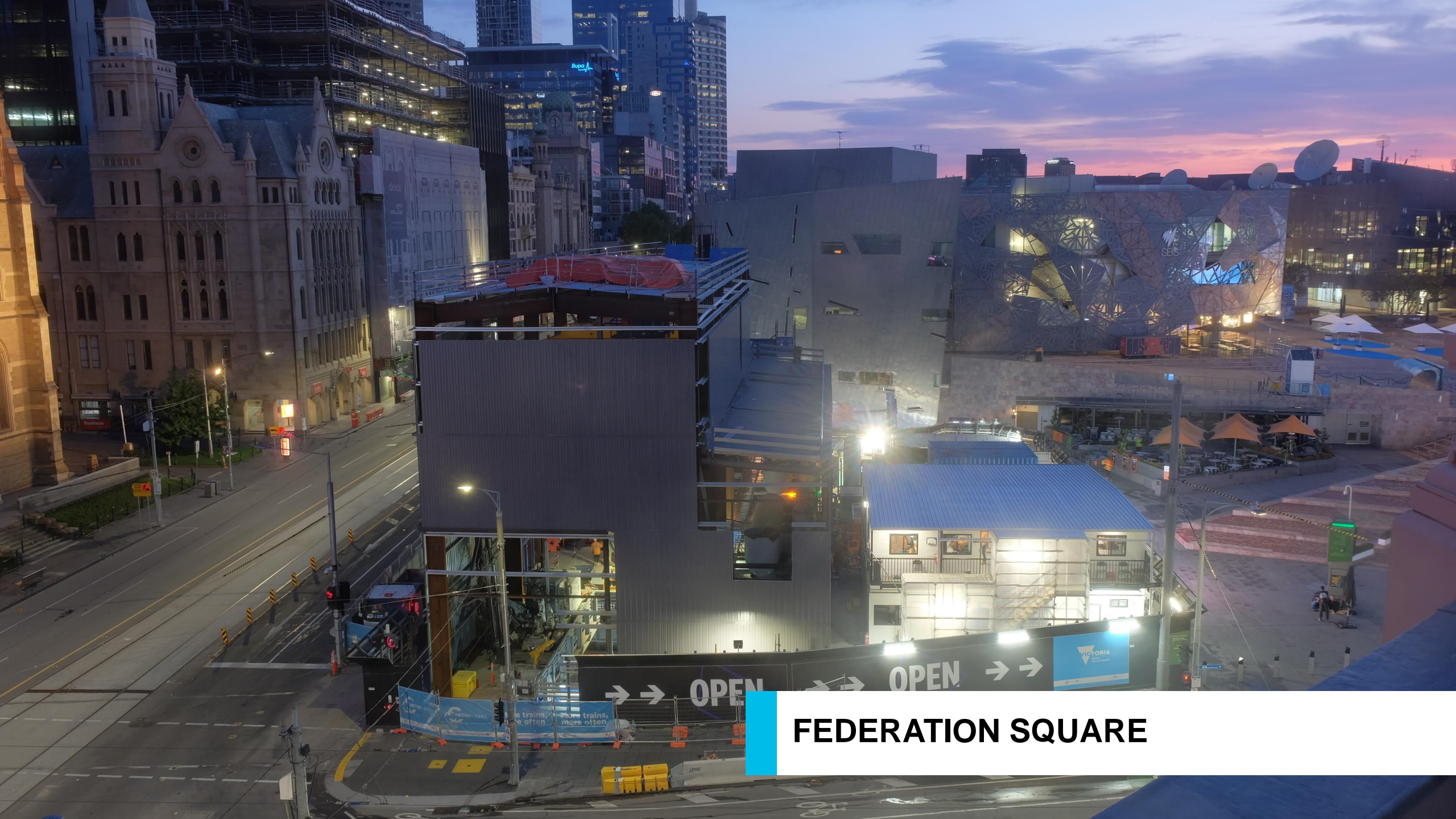
FLINDERS LINK WORKS UPDATE



26/46 piles complete

Activity	Jan	Feb	Mar	Apr	May	Jun	Jul
Service relocation works	—						
Excavation			—				
Piling		—					
Tram Occupation			—				

Slab break back



FEDERATION SQUARE

- 10 metres of the tunnel heading complete
- 2,250 tonnes of rock removed
- 15 metre deep access shaft



FEDERATION SQUARE WORKS UPDATE

Activity	Jan	Feb	Mar	Apr	May	Jun	Jul
Acoustic shed construction	—●						
Excavation	—						
Roadheader tunnelling	—						

FEDERATION SQUARE – OUT OF HOURS WORK

Tunnelling and excavation

- 24 hours, Monday to Sunday

Acoustic shed construction

- 24 hours, Saturday to Monday

Mucking frame deliveries

- 10pm to 5am, from Friday 14 until Monday 17 February



CITY SQUARE

CITY SQUARE WORKS UPDATE

Activity	Location	Jan	Feb	Mar	Apr	May	Jun
Shaft excavation	Internal	[Solid blue bar spanning Jan to Jun]					
Strutting	Internal	[Solid blue bar spanning Jan to Apr]				[Blue dot]	
Roadheader Tunnelling	Internal	[Solid blue bar spanning Jan to Jun]					



- 30 metres of the Collins adit tunnel heading complete
- 7,500 tonne of rock removed





CITY SQUARE – OUT OF HOURS WORKS

Tunnelling and excavation

- 24 hours, Monday to Sunday

Strutting

- 24 hours, Monday to Sunday

CITY SQUARE – NEW HOARDING PANEL





LEGACY ARTS PROGRAM UPDATE

LEGACY ART PROGRAM – LINE-WIDE ARTIST MAREE CLARKE

- Maree Clarke is a Yorta Yorta / Wamba Wamba / Mutti Mutti / Boonwurrung woman who grew up in Mildura and now lives in Melbourne.
- Her line-wide artwork will feature across all five new underground stations – North Melbourne, Parkville, State Library, Town Hall and Anzac.
- Other permanent artworks will be installed in the five new stations.
- Artists have been shortlisted for North Melbourne, State Library, Parkville and Anzac station artwork commissions. These artists will commence concept development shortly, with the final station artists announced in mid-late 2020.



LEGACY ART PROGRAM – TOWN HALL EOI

Expressions of interest to create a permanent public artwork for the new Town Hall Station as part of the Metro Tunnel Legacy Artwork Program are open until 5pm 17 February 2020.

<https://metrotunnel.vic.gov.au/about-the-project/creative-program/legacy-artwork/town-hall-station-EOI>

Stakeholders who wish to share precinct specific information to be given to the artists for their consideration can do so here:

<https://www.surveygizmo.com/s3/5283679/Metro-Tunnel-Legacy-Arts-Program>

Or you can send information of no more than two pages to: legacyartprogram@metrotunnelcyp-dc.com.au



QUESTIONS?

