



# DOMAIN PRECINCT

Community Reference Group

**Presentation by CYP**

13 September 2023



## ACTION



#	ACTION / ISSUE	OWNER
A48-1	CYP to advise Karen Baynes what the plans are for the telephone box outside of Domain Hill.	CYP
A48-2	CYP to confirm the species of grass which will be planted close to the chiller plants.	CYP



# **WORKS UPDATE: STATION CONSTRUCTION**

## WORKS UPDATE

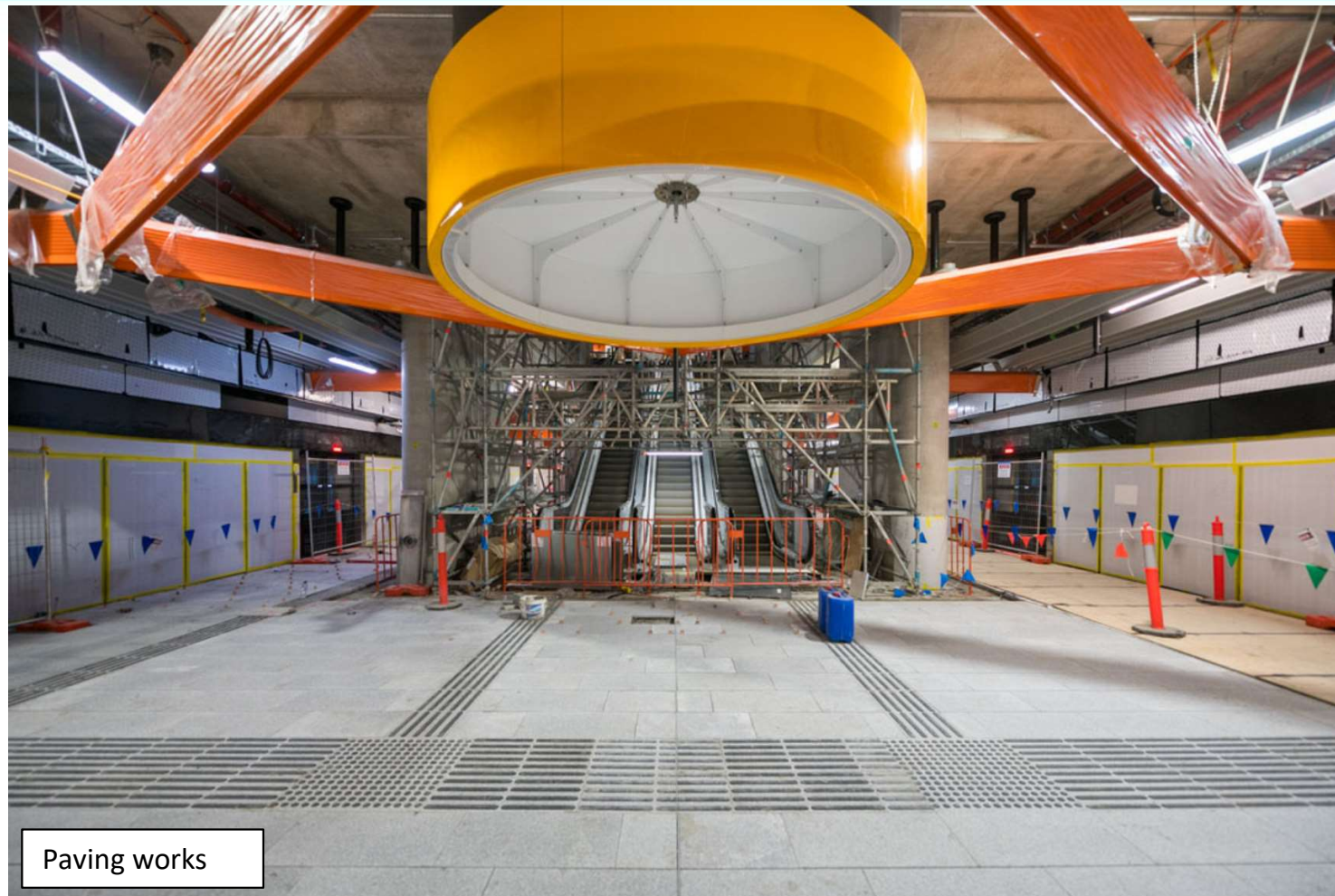
### ANZAC STATION AERIAL





## WORKS UPDATE

### STATION WORKS



Paving works

- Paving on the platform level continues
- Architectural ceilings on concourse are progressing
- Back-of-house room fit out continues
- Testing and commissioning of escalators and lifts nearly done
- Train testing continues
- Public amenities and station office space fitout underway

## WORKS UPDATE

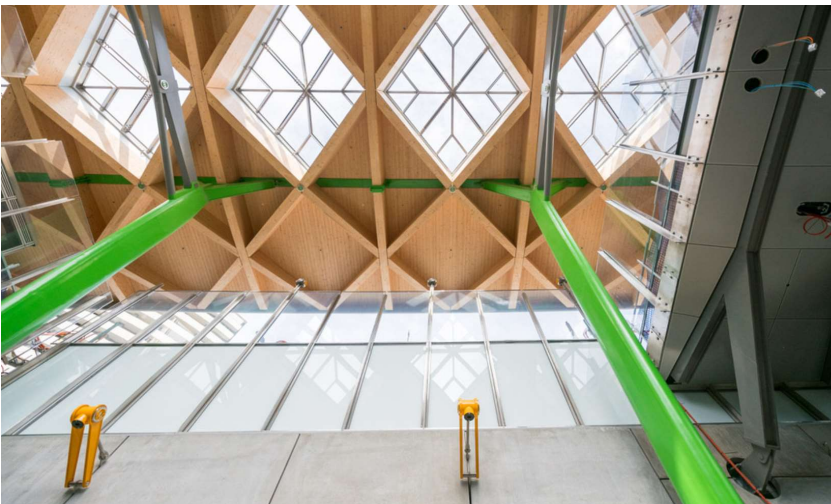
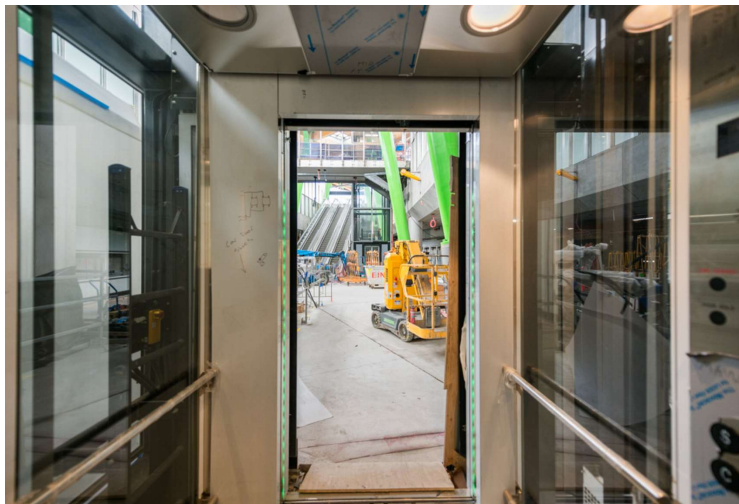
### TRAM PLATFORM



Platform Commissioning



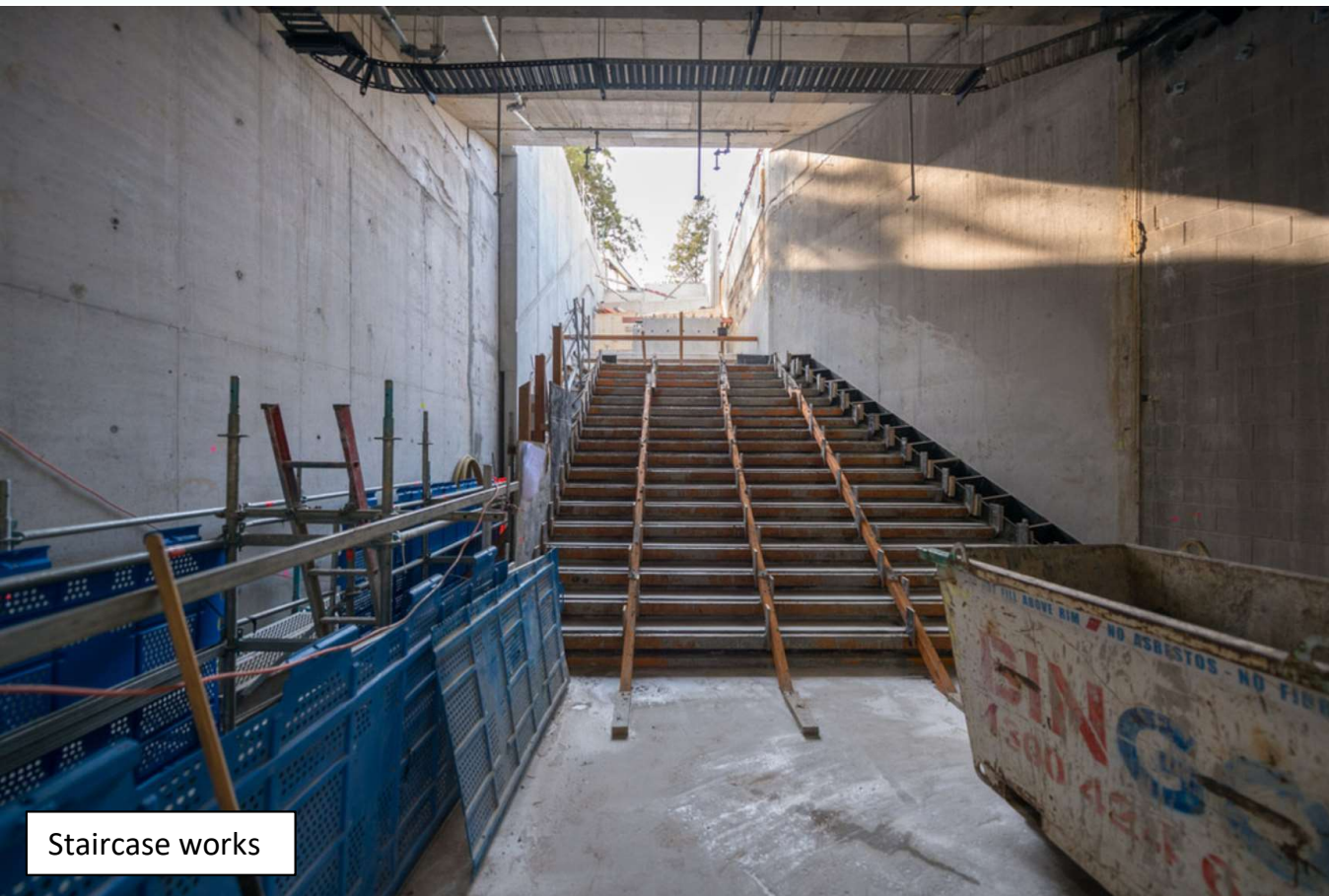
- Scaling back of the hoarding on the tram platform has begun
- Hoarding around the kiosk was scaled back last night
- Tree planting on the platform is now scheduled overnight on Thursday 14 September





## WORKS UPDATE

### SHRINE OF REMEMBRANCE ENTRANCE



Staircase works

- The first of the stairs from concourse level up to surface have now been poured
- Final Precast coming soon followed by commencement of the entrance canopy
- Barriers adjacent to St Kilda Road have been shifted to allow the start of works on service relocation in this section
- Works have commenced on the closure of the last logistics voids in the station roof
- Night shift works under the roof will continue throughout October/November

## WORKS UPDATE

### ALBERT ROAD RESERVE STATION ENTRANCE



Station wall concrete pours

- Concrete pours for the station lining and internal walls are nearly complete
- Formwork decks will then be installed to support the construction of the entrance roof
- Team is targeting completion of the roof structure by late October, followed by waterproofing and backfilling above the roof
- Activities such as steel fixing will continue up until 10pm each night



# **WORKS UPDATE: SURFACE CONSTRUCTION**

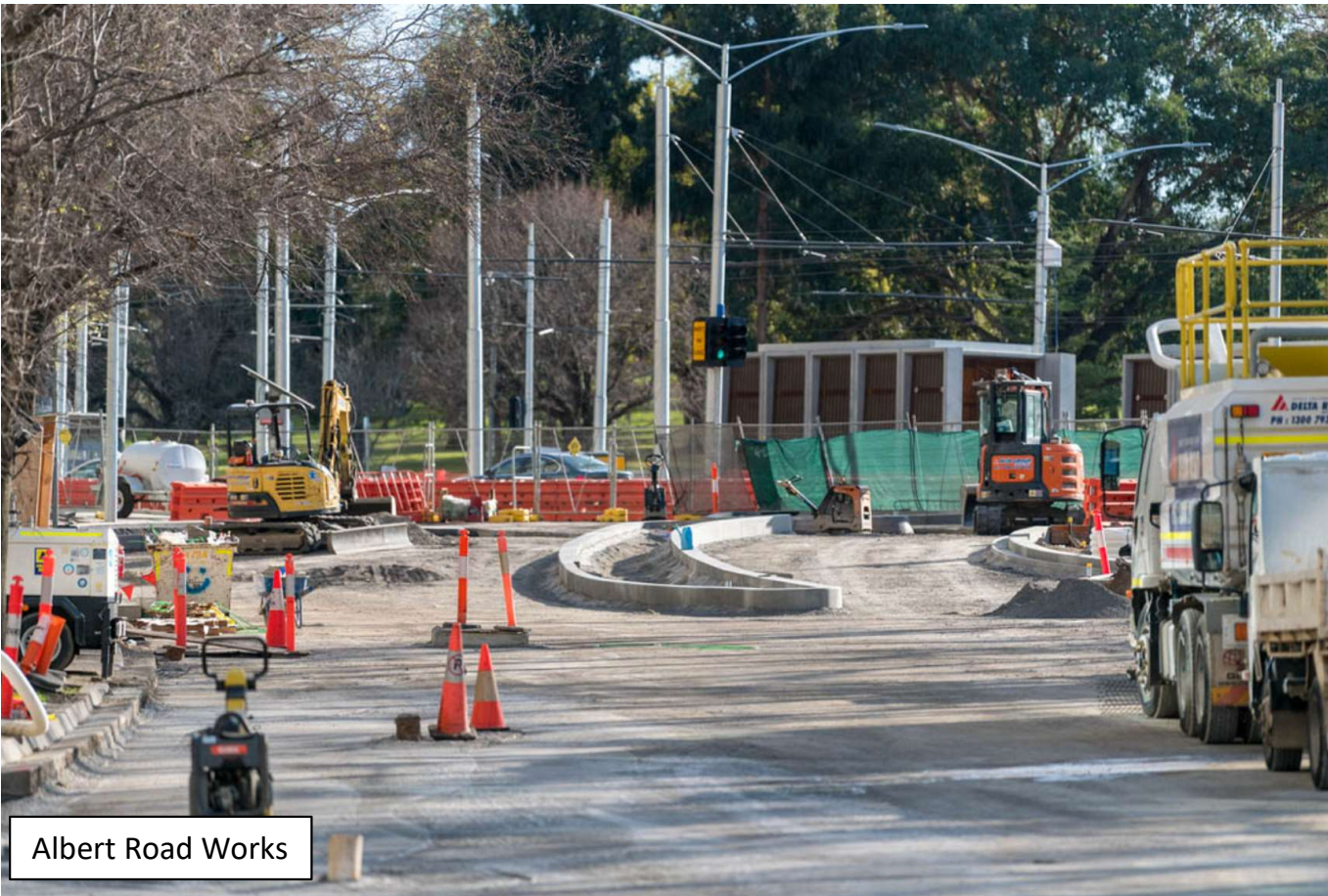


# ALBERT ROAD CONSTRUCTION UPDATE

## ALBERT ROAD



- Albert Road is now partially reopened on its legacy alignment at the St Kilda Road end
- Remaining scope includes, bike lane completion on the western edge and footpath works in front of Kettle Black
- Works are continuing on the parkland between the Albert Road Reserve entrance and Kings Way
- Site sheds adjacent to the station entrance will be removed by mid-November
- Works will then commence on the underground strata vaults for planting, as well as the concrete base for the South African Soldiers' Memorial.



Albert Road Works

## WORKS UPDATE

ST KILDA ROAD – BOWEN CRESCENT TO BOWEN LANE (TOWARDS CITY)



Bowen Lane to Bowen Crescent works



- The utility connection work in this area is continuing
- Bowen Lane reopening has been pushed back until late September
- Re-asphalting of the pavement between Bowen Crescent and Bowen Lane will take place in September
- In October there will be a two-week closure of Bowen Crescent to allow the construction of the raised pedestrian crossing and CitiPower connection works in front of Botanica



## WORKS UPDATE

ST KILDA ROAD - TOORAK ROAD TO BOWEN CRESCENT (TOWARDS CITY)



Chiller Plant installation

- Drainage installation is now complete through this section and reinstatement works have commenced
- Asphaltting will take place in September and barrier removal will follow in early October
- Chiller plants are currently having the underground pipework installed to them to enable cold water transfer to/from the station itself.
- This will be followed by the completion of architectural finishes



## WORKS UPDATE

ST KILDA ROAD – DOMAIN ROAD TO TOORAK ROAD (AWAY FROM CITY)



Drainage installation

- Progress on drainage installation in this section has been hampered by the discovery of a gas main that will require relocation
- Service investigation along the entire length is nearly complete
- Following the relocation of the gas main, the drainage will be installed through this section, bike lanes installed and the road asphalted and both lanes re-opened.



## WORKS UPDATE

ST KILDA ROAD – PARK STREET TO DORCAS STREET (BOTH DIRECTIONS)



- Right turn from Park Street into St Kilda Road is scheduled to reopen 15 September
- Handback process for this section of road to City of Port Phillip and City of Melbourne has now commenced



## WORKS UPDATE

### MAJOR NIGHT WORKS – FINAL ASPHALTING



Albert Road and Kings Way intersection

- As part of the scope of the project, complete intersection re-asphalting is required at:
  - **Intersection of Kings Way and Albert Road**
  - **Intersection of Toorak Road and St Kilda Road**
- Due to the critical nature of both these intersections a full closure is not possible, and works will need to be carried out over several nights
- Department of Transport will only allow multiple lane closures on these intersections from Tuesday to Thursday night for 6 hours per night- and only allow closure of three lanes at a time
- As a result, these works will be staged over 2 separate weeks in September/October for Kings Way and November for Toorak Road
- During the Toorak Road works, the project may also take the opportunity to complete other final asphalting works along St Kilda Road while the closure is in place
- Additional information will be provided closer to the closure.

## Dorcas Street to Park Street

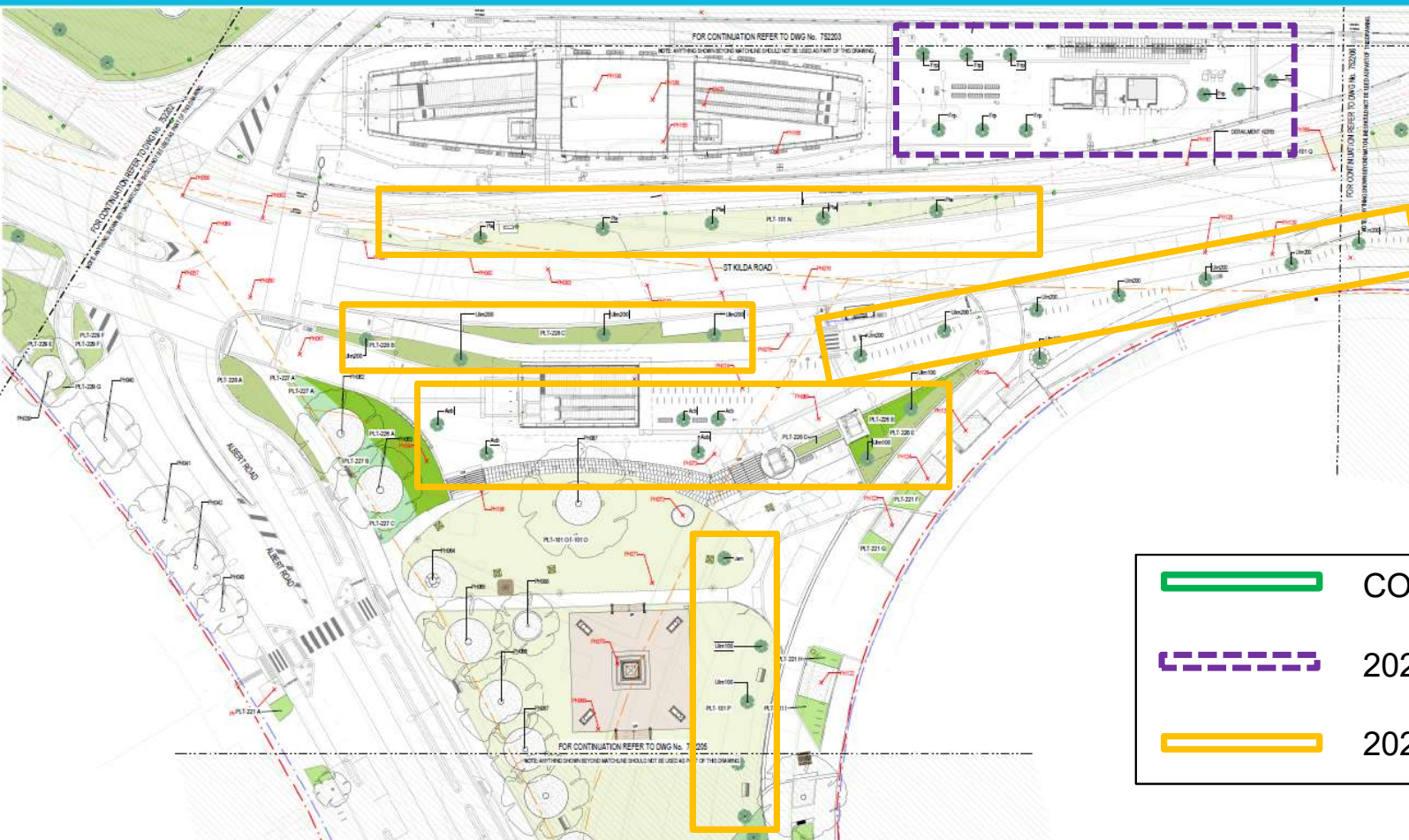






# WORKS UPDATE

## TREE PLANTING TARGET DATES (Albert Road and St Kilda Road)



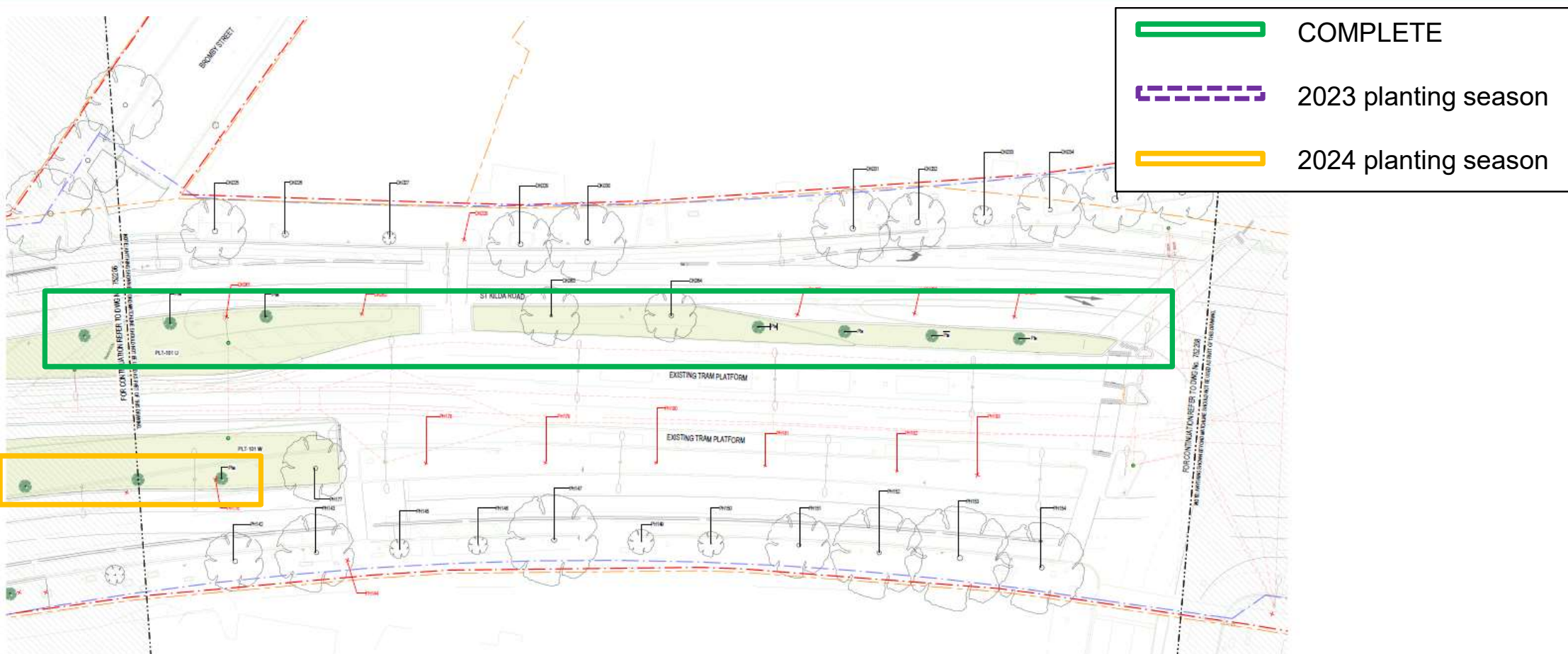




## TREE PLANTING TARGET DATES (Bowen Lane to Bowen Crescent)



## TREE PLANTING TARGET DATES (Bromby Street to Toorak Road)





## COMPLETION DATES – CIVIL SURFACE WORKS

# COMPLETION FORECAST UPDATE



- The start of train testing in the tunnels means that passenger train services are on schedule to commence in 2025
- The previously forecast dates for completion of ANZAC Station precinct road and surface works were:
  - **Q4 2024 (St Kilda Road)**
  - **Q1 2025 (Domain Road/Edmund Herring Oval)**
- CYP have submitted an updated program to RPV for review that proposes the following target completion dates\*:
  - **2-lanes open on St Kilda Road: Q2 2024**
  - **Albert Road Entrance and green link park completion: Q3 2024**
  - **Domain Road and Edmund Herring Oval Completion: Q4 2024**
- To achieve these dates CYP has proposed a ramp up of activities on site and a reprogramming of activities.
- Works will be required up until 10pm on key areas such as the Albert Road Reserve station entrance

\*Note: these are target dates which may be impacted by weather or other factors.



# **TUNNELS AND STATIONS PROJECT WIDE UPDATE**



# METRO TUNNEL PROJECT

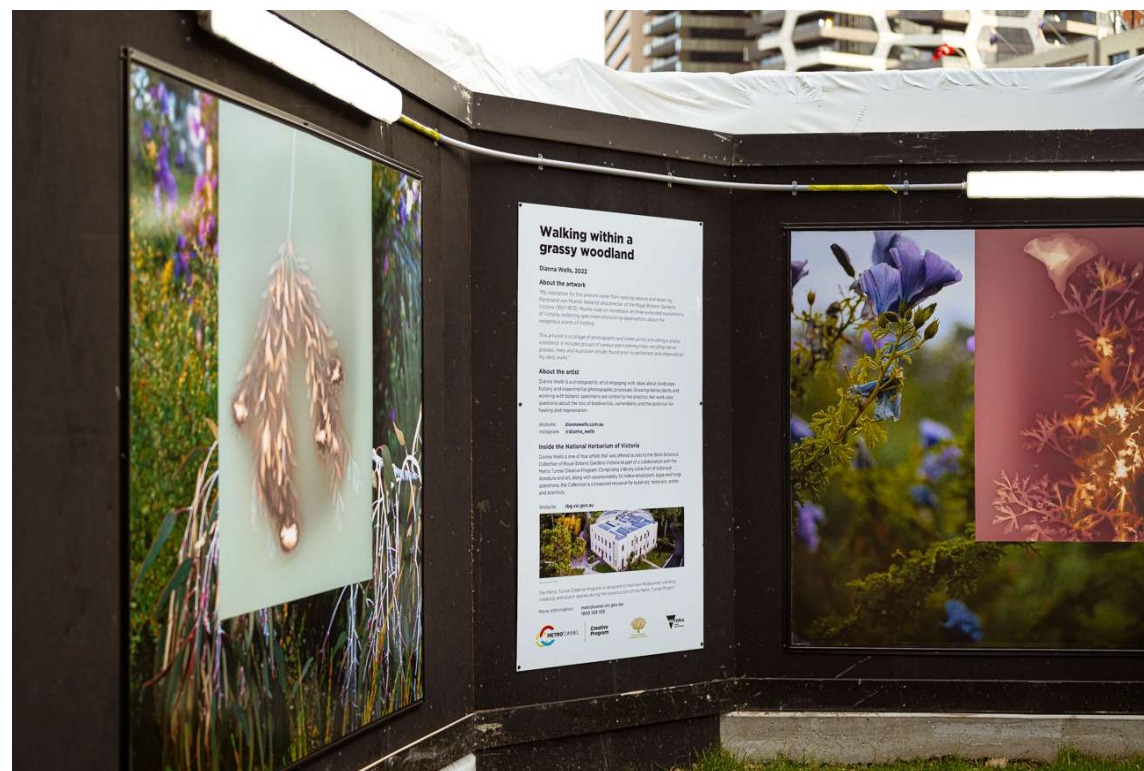
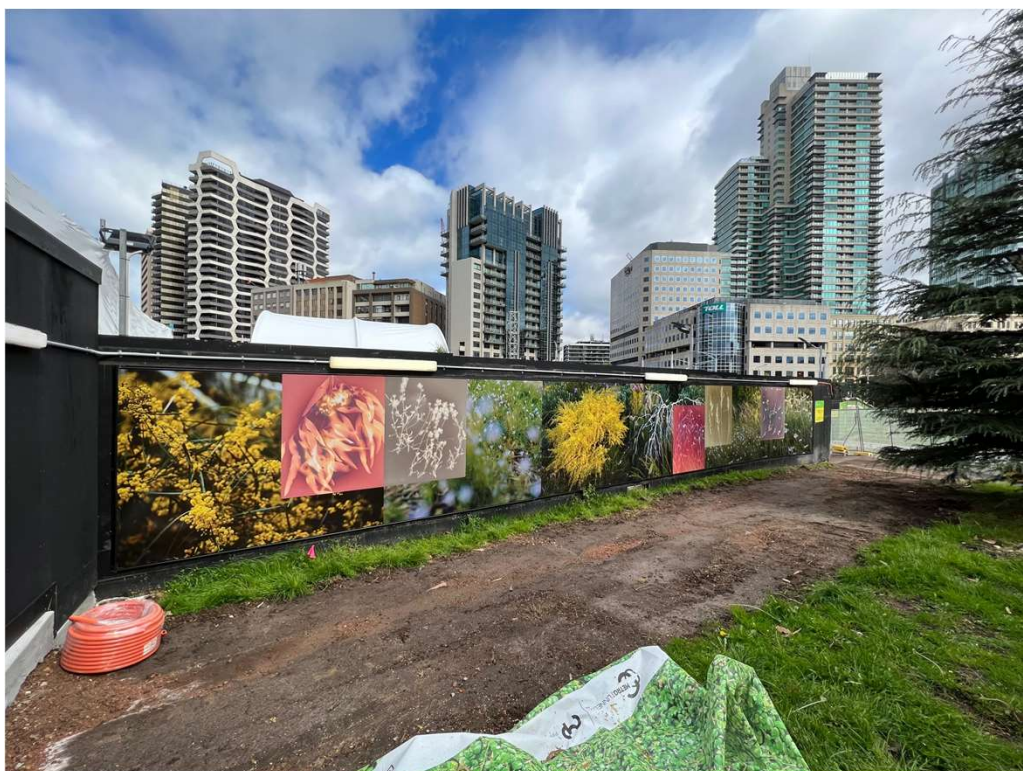
August 2023



# CREATIVE UPDATE

# ANZAC RECONFIGURATION

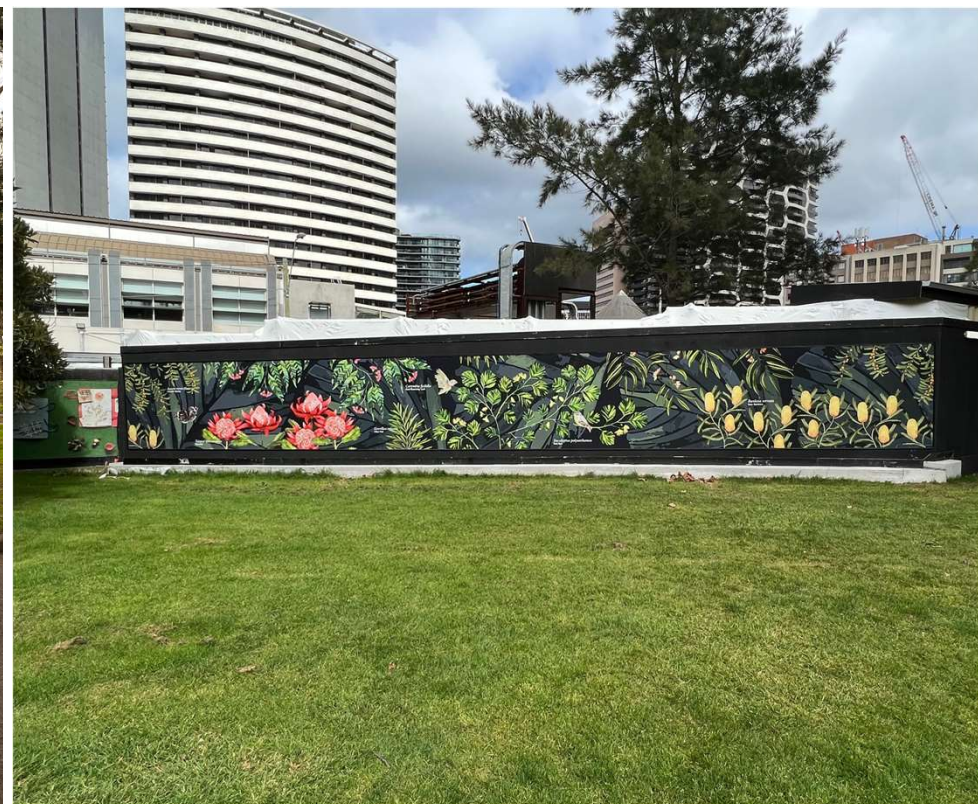
Dianna Wells





# ANZAC RECONFIGURATION

Annie Davidson and Caitlin Klooger





# CREATIVE APPLICATION – ANZAC TRAM STOP

