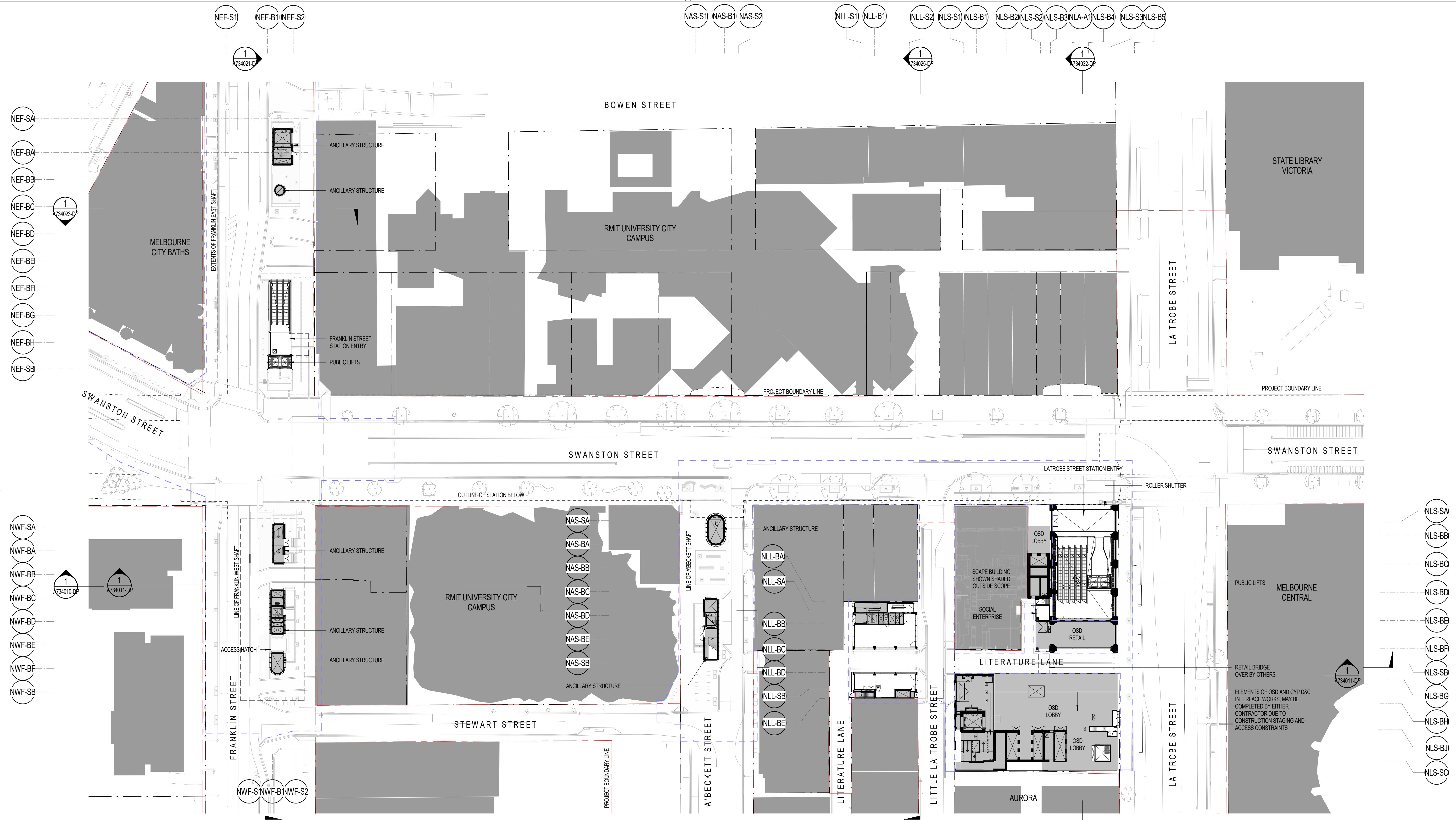





APPENDIX B: CBD NORTH PRECINCT ARCHITECTURAL PLANS AND ELEVATIONS

Ground Floor Level Plan	TAS-HWW-CBN-ZWD-DRG-ARC-TNC-A731000-DP
Signage Placement Plan	TAS-HWW-CBN-ZWD-DRG-ARC-TNC-A731001-DP
B2 – Melbourne Central Concourse & Service Level Plan	TAS-HWW-CBN-ZWD-DRG-ARC-TNC-A731020-DP
B3 – Melbourne Central Transfer & Services Level Plan	TAS-HWW-CBN-ZWD-DRG-ARC-TNC-A731030-DP
B5 – Emergency Access Adit Level Plan	TAS-HWW-CBN-ZWD-DRG-ARC-TNC-A731050-DP
Ground Floor Level Plan – North	TAS-HWW-CBN-ZWD-DRG-ARC-TNC-A732001-DP
Ground Floor Level Plan – South	TAS-HWW-CBN-ZWD-DRG-ARC-TNC-A732002-DP
La Trobe & Swanston Street Elevation	TAS-HWW-CBN-ZWD-DRG-ARC-TNC-A733001-DP
North – South Long Section	TAS-HWW-CBN-ZWD-DRG-ARC-TNC-A734010-DP
North – South Long Section 2	TAS-HWW-CBN-ZWD-DRG-ARC-TNC-A734011-DP
North – South Section – Literature Lane	TAS-HWW-CBN-ZWD-DRG-ARC-TNC-A734015-DP
East – West Cross Section – Franklin Street	TAS-HWW-CBN-ZWD-DRG-ARC-TNC-A734021-DP
East – West Cross Section – Literature Lane	TAS-HWW-CBN-ZWD-DRG-ARC-TNC-A734022-DP
North – South Cross Section – Franklin Street	TAS-HWW-CBN-ZWD-DRG-ARC-TNC-A734023-DP
East-West Cross Section – Little Latrobe Street	TAS-HWW-CBN-ZWD-DRG-ARC-TNC-A734025-DP
East – West Cross Section– La Trobe Street Adit	TAS-HWW-CBN-ZWD-DRG-ARC-TNC-A734032-DP
Material Schedule	TAS-CYP-CN-SCH-ARC-CBN-A734035-DP
Material Schedule	TAS-CYP-CN-00-SCH-ARC-CBN-A734036-DP



1 GROUND FLOOR LEVEL PLAN
1:500

LEGEND

-  NOT FOR APPROVAL
 PROJECT LAND BOUNDARY
 EXTENT OF PUBLIC REALM DESIGN RESPONSE

8. ALL SPEEDPANEL TO B1 OSD TO BE INSTALLED VERTICALLY UNLESS NOTED OTHERWISE

CYP		G.11	28/09/23	ISSUED FOR DEVELOPMENT PLAN		HWW	PS/CL		
CYP		G.10	29/07/22	ISSUED FOR DEVELOPMENT PLAN		HWW	HV/GB	CYP	
CYP		G.9	09/06/22	ISSUED FOR DEVELOPMENT PLAN		HWW	HV/GB		
CYP		G.8	24/03/22	ISSUED FOR DEVELOPMENT PLAN		HWW	HV/GB		
CYP		G.7	08/03/22	ISSUED FOR DEVELOPMENT PLAN		HWW	HV/GB		
CYP		G.6	18/02/22	ISSUED FOR DEVELOPMENT PLAN		HWW	HV/GB		
CYP		G.5	08/03/18	ISSUED FOR DEVELOPMENT PLAN		HWW	HV/GB		
CYP		G.4	02/02/18	ISSUED FOR DEVELOPMENT PLAN		HWW	HV/GB		
Revised By	In Serv	Rev.	Date	Description		Designed	Checked	Ind. Rev.	Approv.

This drawing has been prepared by, or compiled from information provided by, persons other than PTV. To the maximum extent permissible by law, PTV takes no responsibility for, and makes no representations in relation to, the completeness, accuracy or quality of any information contained in this drawing. Each user of this drawing releases PTV from all and any loss, damage, cost, expense or liability in relation to the use of, or any reliance on, this drawing or the information contained in it.

All written dimensions take precedence over scaled dimensions.

This drawing is provided only for the information of the person or organisation to whom PTV provides it. It may not be provided to, or used by, any other person without PTV's prior written consent.

	KEY PLAN
--	----------

	Consultant
--	------------



ARCHITECTURAL
CBD NORTH
GROUND FLOOR PLAN
DEVELOPMENT PLAN

Up Location	Down Location	Datum
East.	East.	
North.	North.	
ID#	ID#	

DEVELOPMENT PLAN SUBMISSION

Project Drawing Number	Revision
TAS-HWW-CBN-ZWD-DRG-ARC-TNC-A731000-DP	G.11



File Name		PS/CL	
Sheet No.		Approved	Approval Date
		Approver	
In Serv		Drawing Number	Revision
Scale As indicated	Sheet Size A1		

1
1486
B2 - MELBOURNE CENTRAL CONCOURSE & SERVICE LEVEL PLAN
1:500

LEGEND

- NOT FOR APPROVAL
- PROJECT LAND BOUNDARY
- EXTENT OF PUBLIC REALM DESIGN RESPONSE

8. ALL SPEEDPANEL TO B1 OSD TO BE INSTALLED VERTICALLY UNLESS NOTED OTHERWISE

CYP		G.9	28/09/23	ISSUED FOR DEVELOPMENT PLAN
CYP		G.8	22/09/23	ISSUED FOR DEVELOPMENT PLAN
CYP		G.7	09/06/22	ISSUED FOR DEVELOPMENT PLAN
CYP		G.6	24/03/22	ISSUED FOR DEVELOPMENT PLAN
CYP		G.5	08/03/22	ISSUED FOR DEVELOPMENT PLAN
CYP		G.4	18/02/22	ISSUED FOR DEVELOPMENT PLAN
CYP		G.3	08/03/18	ISSUED FOR DEVELOPMENT PLAN
CYP		G.2	21/11/17	ISSUED FOR DEVELOPMENT PLAN
Revised By	In Serv	Rev.	Date	Description

HW	PS/CL		
HW	HV/GB	CYP	
HW	HV/GB		
HW	HV/GB		
HW	HV/GB		
HW	HV/GB		
HW	HV/GB		
HW	HV/GB		
Designed	Checked	Ind. Rev.	Approv.

This drawing has been prepared by, or compiled from, information provided by, persons other than PTV. To the maximum extent permitted by law, PTV disclaims responsibility for, and makes no representations in relation to, the completeness, accuracy or quality of any information contained in this drawing. Each user of this drawing releases PTV from all and any loss, damage, cost, expense or liability in relation to the use of, or any reliance on, this drawing or the information contained in it.

All written dimensions take precedence over scaled dimensions.

This drawing is provided only for the information of the person or organisation to whom PTV provides it. It may not be provided to, or used by, any other person without PTV's prior written consent.

KEY PLAN

Consultant



Franchisee / Lessee



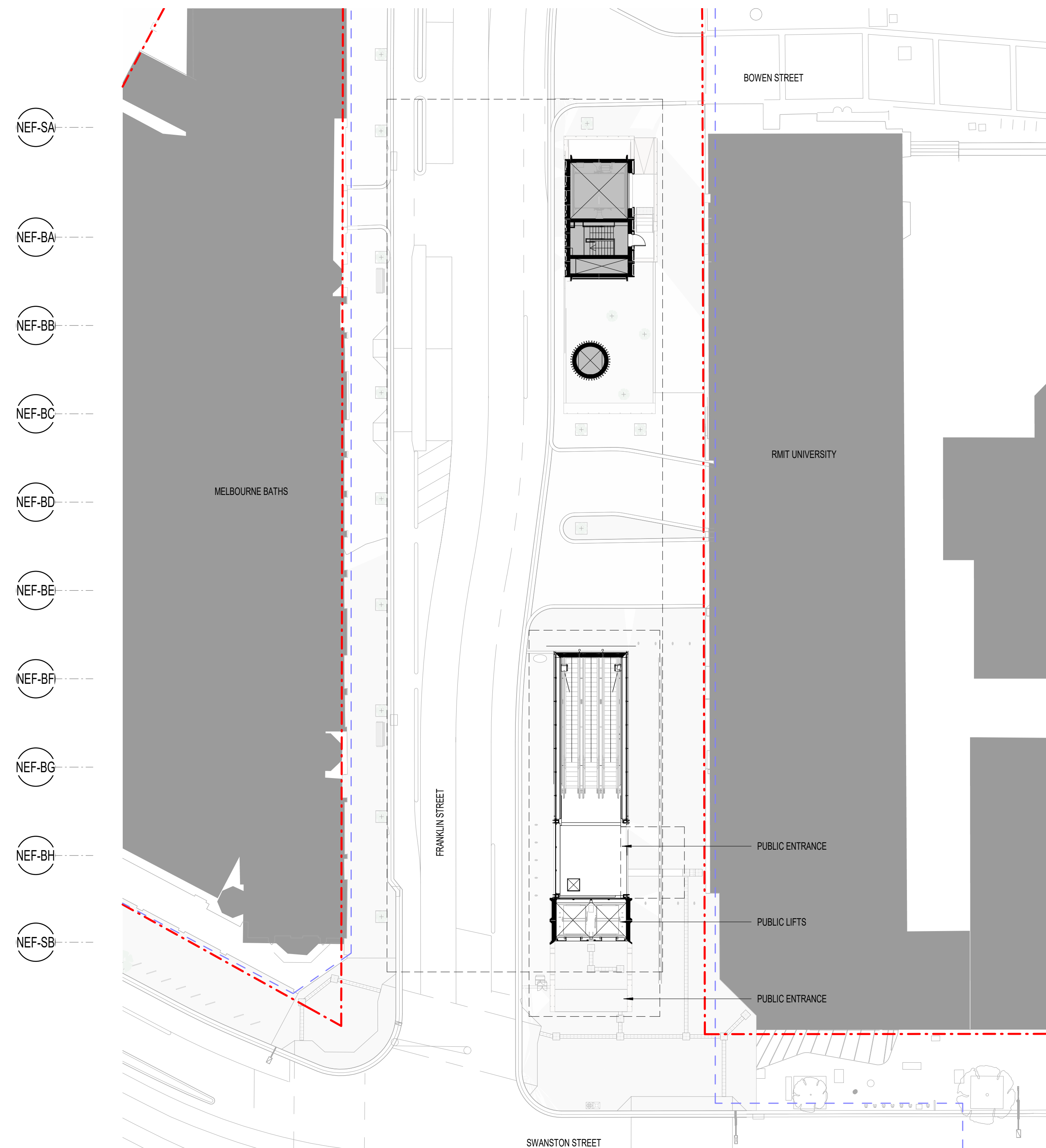
ARCHITECTURAL
CBD NORTH
SERVICE LEVEL PLAN

Up Location East. North. ID#	Down Location East. North. ID#	Datum
---------------------------------------	---	-------

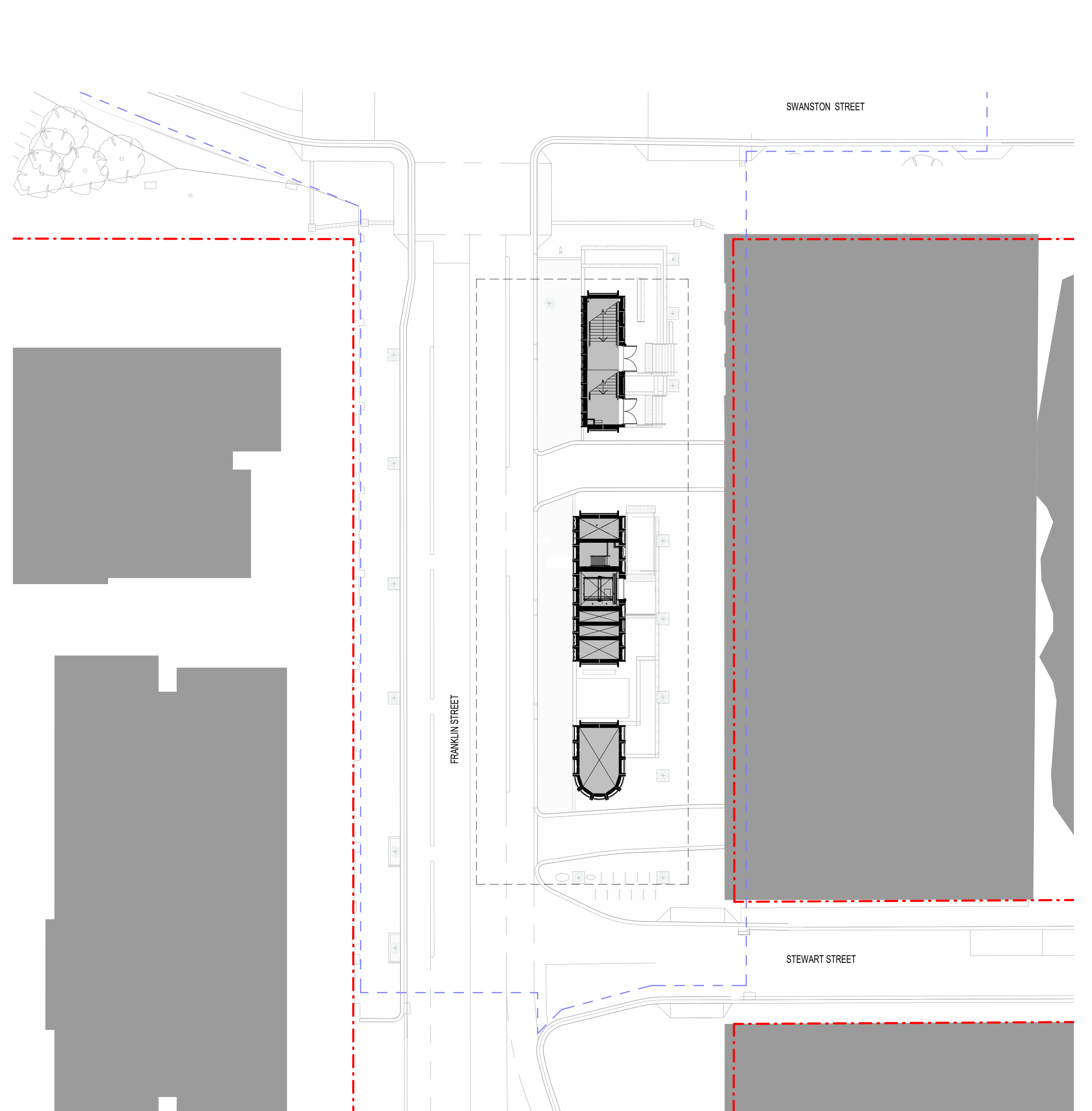
DEVELOPMENT PLAN
SUBMISSION

Project Drawing Number	Revision
TAS-HWW-CBN-ZWD-DRG-ARC-TNC-A731020-DP	G.09

PUBLIC TRANSPORT VICTORIA PT	Drawn By HWW	Designed By HWW
File Name	Checked By PS/CL	Ind. Review
Sheet No.	Approved Approver	Approval Date
In Serv	Drawing Number	Revision
Scale As indicated	Sheet Size A1	






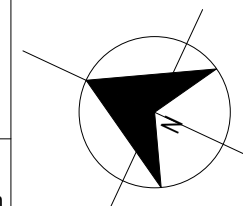
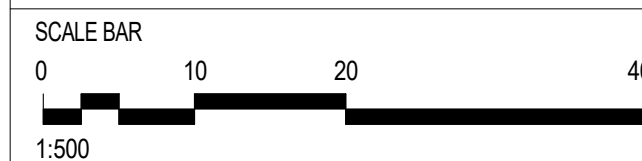
1 GROUND FLOOR LEVEL PLAN - NORTH - FRANKLIN STREET EAST
1496 1:250



2 GROUND FLOOR LEVEL PLAN - NORTH - FRANKLIN STREET WEST
1496 1:250

LEGEND

-  NOT FOR APPROVAL
 PROJECT LAND BOUNDARY
 EXTENT OF PUBLIC REALM/ DESIGN RESPONSE



KEY PLAN

	Consultant
--	------------



Franchisee / Lessee



ARCHITECTURAL
CBD NORTH
GROUND FLOOR PLAN - NORTH

Up Location	
East.	
North.	
ID#	

Down Location
East.
North.
ID#

Datum

DEVELOPMENT PLAN
SUBMISSION

Project Drawing Number

Revision

TAS-HWW-CBN-ZWD-DRG-ARC-TNC-A732001-DP

G.9



Drawn By

Designed By

Checked By

Ind. Review

Approved

Approval Date

Drawing Number

Revision

Scale As indicated

Sheet Size	A1
------------	----

A1

CYP		G.9	28/09/23	ISSUED FOR DEVELOPMENT PLAN
CYP		G.8	09/06/22	ISSUED FOR DEVELOPMENT PLAN
CYP		G.7	24/03/22	ISSUED FOR DEVELOPMENT PLAN
CYP		G.6	08/03/22	ISSUED FOR DEVELOPMENT PLAN
CYP		G.5	18/02/22	ISSUED FOR DEVELOPMENT PLAN
CYP		G.4	08/03/18	ISSUED FOR DEVELOPMENT PLAN
CYP		G.3	02/02/18	ISSUED FOR DEVELOPMENT PLAN
CYP		G.2	21/11/17	ISSUED FOR DEVELOPMENT PLAN
Revised By	In Serv	Rev.	Date	Description

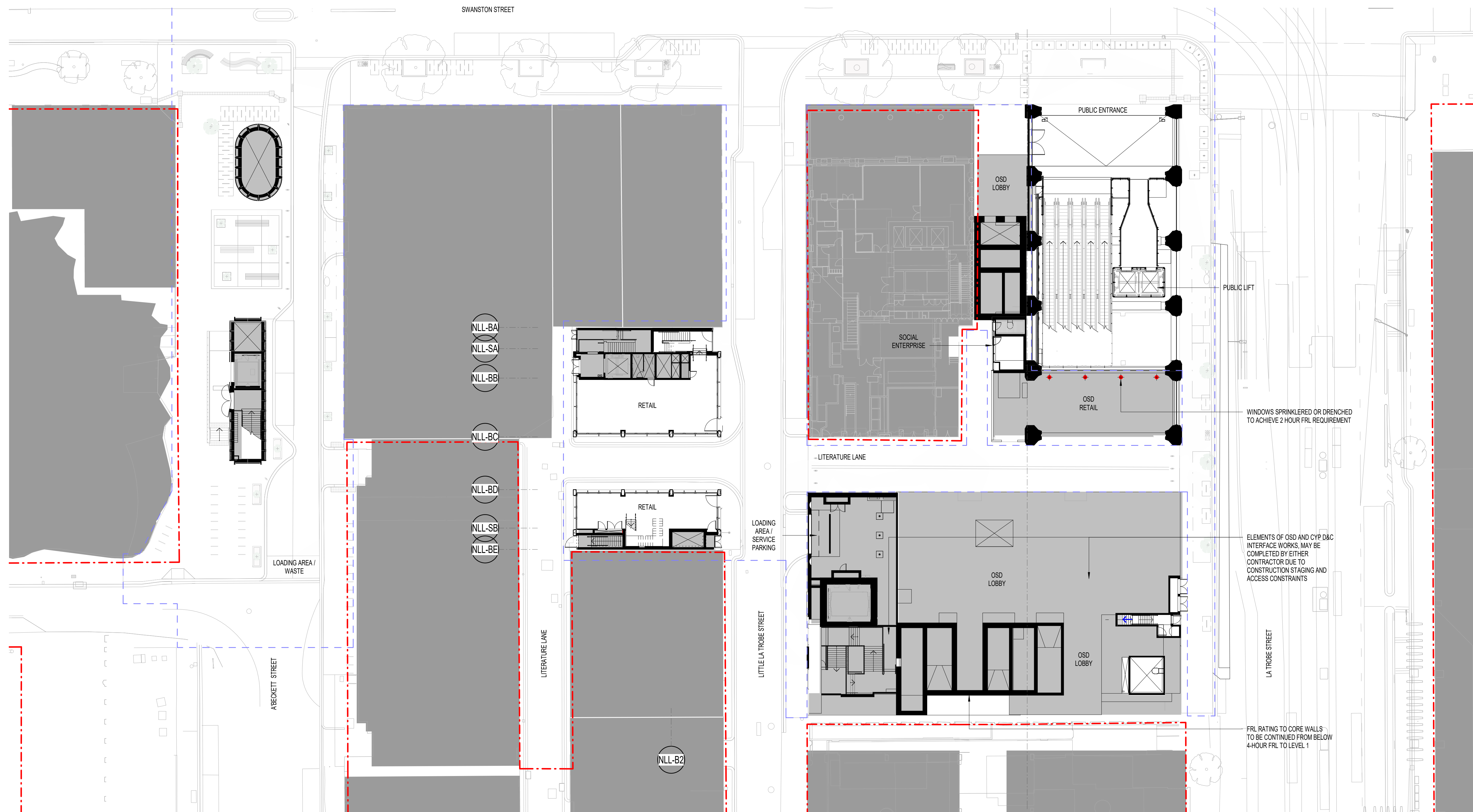
HWW	PS/CL		
HWW	HV/GB	CYP	
HWW	HV/GB		
HWW	HV/GB		
HWW	HV/GB		
HWW	HV/GB		
HWW	HV/GB		
HWW	HV/GB		
Designed	Checked	Ind. Rev.	Approv

This drawing has been prepared by, or compiled from information provided by, persons other than PTV. To the maximum extent permissible by law, PTV takes no responsibility for, and makes no representations in relation to, the completeness, accuracy or quality of any information contained in this drawing. Each user of this drawing releases PTV from all and any loss, damage, cost, expense or liability in relation to the use of, or any reliance on, this drawing or the information contained in it.

All written dimensions take precedence over scaled dimensions.

This drawing is provided only for the information of the person or organisation to whom PTV provides it. It may not be provided to, or used by, any other person without PTV's prior written



8. ALL SPEEDPANEL TO B1 OSD TO BE INSTALLED VERTICALLY UNLESS NOTED OTHERWISE

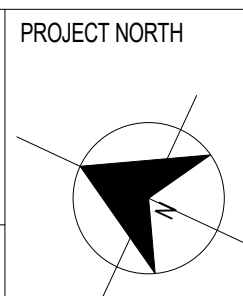
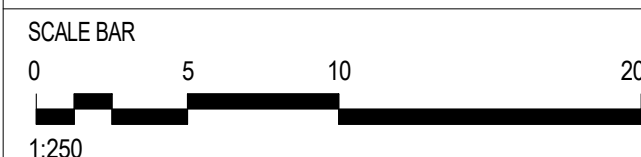


1 GROUND FLOOR LEVEL PLAN - SOUTH - LA TROBE STREET

1496 1:250

LEGEND

 NOT FOR APPROVAL
 PROJECT LAND BOUNDARY
 EXTENT OF PUBLIC REALM/ DESIGN RESPONSE



KEY PLAN

Consultant	
------------	--



Franchisee / Lessee



ARCHITECTURAL
CBD NORTH
GROUND FLOOR PLAN - SOUTH

Up Location
East.
North.
ID#

Down Location	
East.	
North.	
ID#	

Datum	
-------	--

DEVELOPMENT PLAN
SUBMISSION

Project Drawing Number

Revision

TAS-HWW-CBN-ZWD-DRG-ARC-TNC-A732002-D

G.9



Drawn By	
----------	--

Designed By

Checked B

Ind. Review

Approved

Approval Date	
---------------	--

Drawing Number

Revision

Scale As indicated

Sheet Size	A
------------	---

A

CYP		G.9	28/09/23	ISSUED FOR DEVELOPMENT PLAN
CYP		G.8	09/08/22	ISSUED FOR DEVELOPMENT PLAN
CYP		G.7	24/03/22	ISSUED FOR DEVELOPMENT PLAN
CYP		G.6	08/03/22	ISSUED FOR DEVELOPMENT PLAN
CYP		G.5	18/02/22	ISSUED FOR DEVELOPMENT PLAN
CYP		G.4	08/03/18	ISSUED FOR DEVELOPMENT PLAN
CYP		G.3	02/02/18	ISSUED FOR DEVELOPMENT PLAN
CYP		G.2	21/11/17	ISSUED FOR DEVELOPMENT PLAN
Revised By	In Serv	Rev.	Date	Description

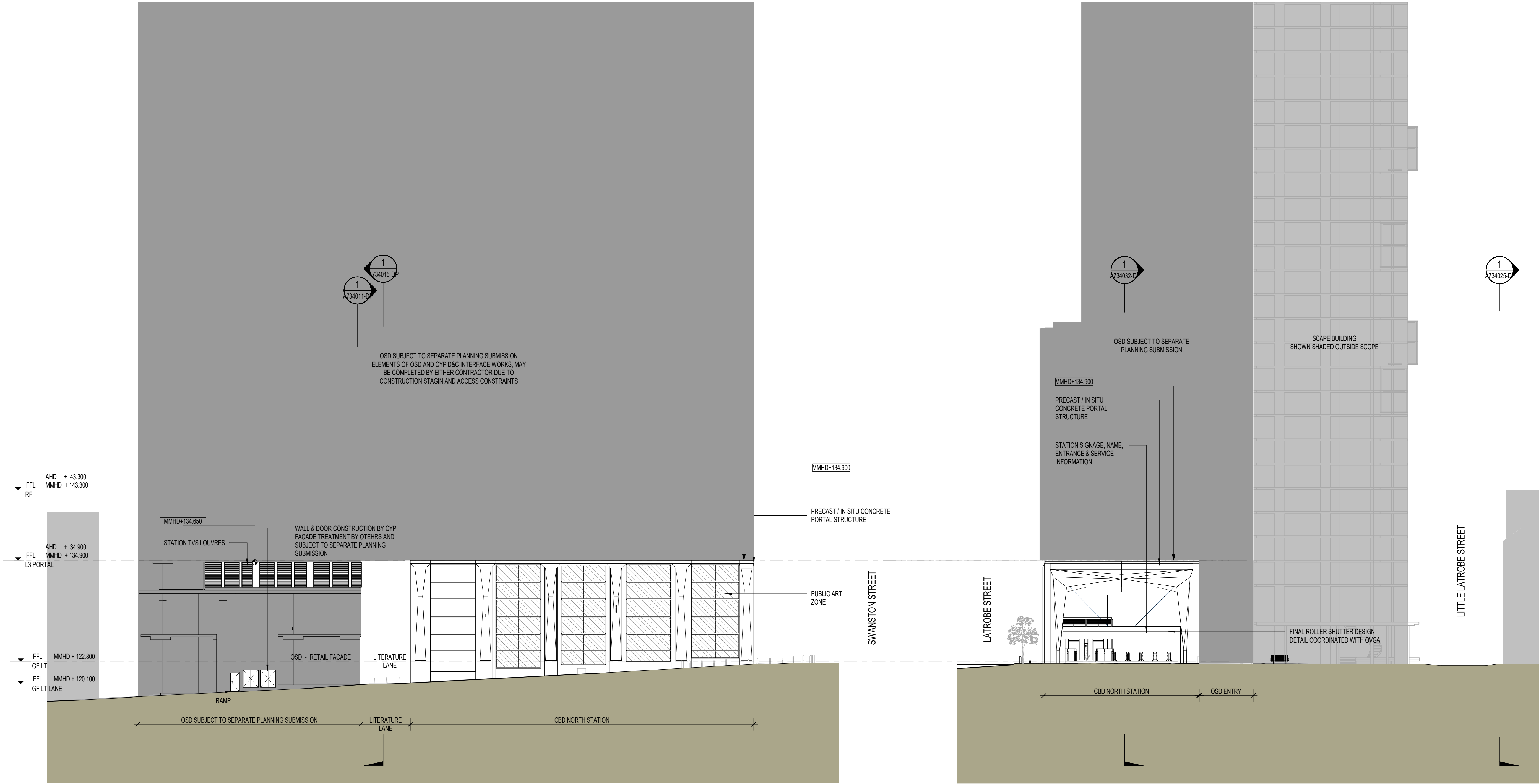
WWW	PS/CL		
WWW	HV/GB	CYP	
WWW	HV/GB		
WWW	HV/GB		
WWW	HV/GB		
WWW	HV/GB		
WWW	HV/GB		
Designed	Checked	Ind. Rev.	Approv

This drawing has been prepared by, or compiled from information provided by, persons other than PIV. To the maximum extent permitted by law, PIV takes no responsibility for, and makes no representations in relation to, the completeness, accuracy or quality of any information contained in this drawing. Each use of this drawing releases PIV from all and any loss, damage, cost, expense or liability in relation to the use of, or any reliance on, this drawing or the information contained in it.

All written dimensions take precedence over scaled dimensions.

This drawing is provided only for the information of the person or organisation to whom PIV provides it. It may not be provided to, or used by, any other person other than PIV's prior written

8. ALL SPEEDPANEL TO B1 OSD TO BE INSTALLED VERTICALLY UNLESS NOTED OTHERWISE



1 LA TROBE STREET ELEVATION - EAST WEST
2180 1:250

2 SWANSTON STREET ELEVATION - NORTH SOUTH
2236 1:250

LEGEND

NOT FOR APPROVAL

SCALE BAR

KEY PLAN

DEVELOPMENT PLAN
SUBMISSION

Project Drawing Number
TAS-HWW-CBN-ZWD-DRG-ARC-TNC-A733001-DP

Revision
G.8

CYP		G.8	28/09/23	ISSUED FOR DEVELOPMENT PLAN	HWW	PS/CL				
CYP		G.7	22/09/23	ISSUED FOR DEVELOPMENT PLAN	HWW	HV/GB	CYP			
CYP		G.6	10/06/22	ISSUED FOR DEVELOPMENT PLAN	HWW	HV/GB				
CYP		G.5	09/06/22	ISSUED FOR DEVELOPMENT PLAN	HWW	HV/GB				
CYP		G.4	24/03/22	ISSUED FOR DEVELOPMENT PLAN	HWW	HV/GB				
CYP		G.3	08/03/22	ISSUED FOR DEVELOPMENT PLAN	HWW	HV/GB				
CYP		G.2	18/02/22	ISSUED FOR DEVELOPMENT PLAN	HWW	HV/GB				
CYP		G.1	02/02/18	ISSUED FOR DEVELOPMENT PLAN	HWW	HV/GB				
Revised By	In Serv	Rev.	Date	Description	Designed	Checked	Ind. Rev.	Approv.		

This drawing has been prepared by, or compiled from, information provided by, persons other than PTY. To the maximum extent permitted by law, PTY disclaims any responsibility for, and makes no representations in relation to, the completeness, accuracy or quality of any information contained in this drawing. Each use of this drawing releases PTY from all and any liability, damage, cost, expense or liability in relation to the use of, or any reliance on, this drawing or the information contained in it.

All written dimensions take precedence over scaled dimensions.

This drawing is provided only for the information of the person or organisation to whom PTY provides it. It may not be provided to, or used by, any other person without PTY's prior written consent.

Consultant
Cross
Yarra
Partnership

Franchisee / Lessee
RAIL
PROJECTS
VICTORIA

ARCHITECTURAL
CBD NORTH
ELEVATIONS
LA TROBE STREET
SWANSTON STREET

Up Location
East.
North.
ID#

Down Location
East.
North.
ID#

Datum

File Name
Sheet No.
In Serv
Scale
As indicated

Sheet Size
A1

Drawn By
HWW

Checked By
PS/CL

Approved
Approver

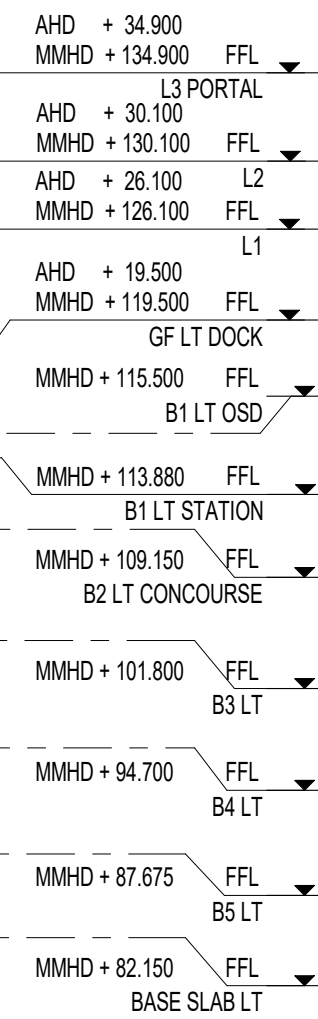
Drawing Number

Revision
HWW

Ind. Review

Approval Date

Revision



 NOT FOR APPROVAL



This drawing has been prepared by, or compiled from information provided by, persons other than PTV. To the maximum extent permissible by law, PTV takes no responsibility for, and makes no representations in relation to, the completeness, accuracy or quality of any information contained in this drawing. Each user of this drawing releases PTV from all and any loss, damage, cost, expense or liability in relation to the use of, or any reliance on, this drawing or the information contained in it.

All written dimensions take precedence over scaled dimensions.

This drawing is provided only for the information of the person or organization to whom PTV provides it. It may not be provided to, or used by, any other person without PTV's prior written consent.

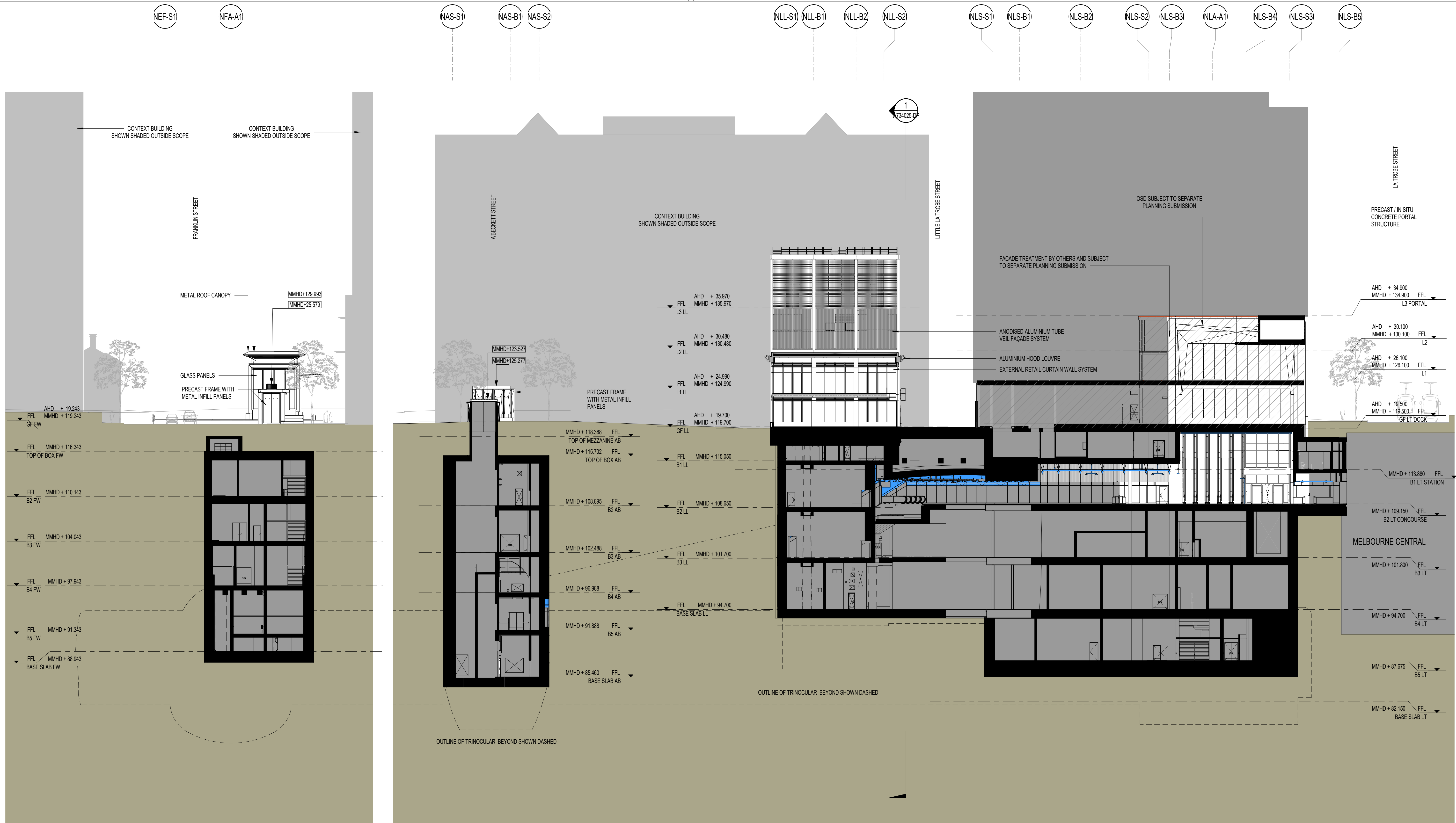


**RAIL
PROJECTS
VICTORIA**

Datum	
-------	--

[illegible]

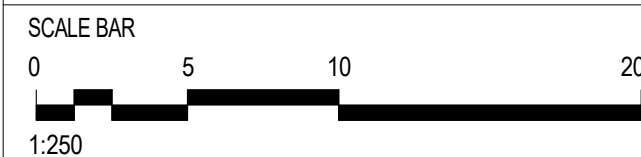
8. ALL SPEEDPANEL TO B1 OSD TO BE INSTALLED VERTICALLY UNLESS NOTED OTHERWISE



1 NORTH-SOUTH LONG SECTION - FRANKLIN ST, A'BECKETT ST & LITTLE LATROBE ST SHAFTS
1:250

LEGEND

NOT FOR APPROVAL



PROJECT NORTH

KEY PLAN

DEVELOPMENT PLAN
SUBMISSION

Project Drawing Number
TAS-HWW-CBN-ZWD-DRG-ARC-TNC-A734011-DP

Revision
G.9

CYP	G.9	28/09/23	ISSUED FOR DEVELOPMENT PLAN	HW	PS/CL				
CYP	G.8	29/07/22	ISSUED FOR DEVELOPMENT PLAN	HW	HV/GB	CYP			
CYP	G.7	14/06/22	ISSUED FOR DEVELOPMENT PLAN	HW	HV/GB				
CYP	G.6	24/03/22	ISSUED FOR DEVELOPMENT PLAN	HW	HV/GB				
CYP	G.5	08/03/22	ISSUED FOR DEVELOPMENT PLAN	HW	HV/GB				
CYP	G.4	18/02/22	ISSUED FOR DEVELOPMENT PLAN	HW	HV/GB				
CYP	G.3	08/03/18	ISSUED FOR DEVELOPMENT PLAN	HW	HV/GB				
CYP	G.2	21/11/17	ISSUED FOR DEVELOPMENT PLAN	HW	HV/GB				
Revised By	In Serv	Rev.	Date	Description	Designed	Checked	Ind. Rev.	Approval	

This drawing has been prepared by, or compiled from, information provided by, persons other than PTY. To the maximum extent permitted by law, PTY disclaims any responsibility for, and makes no representations in relation to, the completeness, accuracy or quality of any information contained in this drawing. Each user of this drawing releases PTY from all and any loss, damage, cost, expense or liability in relation to the use of, or any reliance on, this drawing or the information contained in it.

All written dimensions take precedence over scaled dimensions.

This drawing is provided only for the information of the person or organisation to whom PTY provides it. It may not be provided to, or used by, any other person without PTY's prior written consent.

Consultant
Cross Yarra Partnership

Franchisee / Lessee
RAIL PROJECTS VICTORIA

ARCHITECTURAL
CBD NORTH
NORTH - SOUTH CROSS SECTION

Up Location East, North, ID#

Down Location East, North, ID#

Datum

Drawn By
HW

Checked By
PS/CL

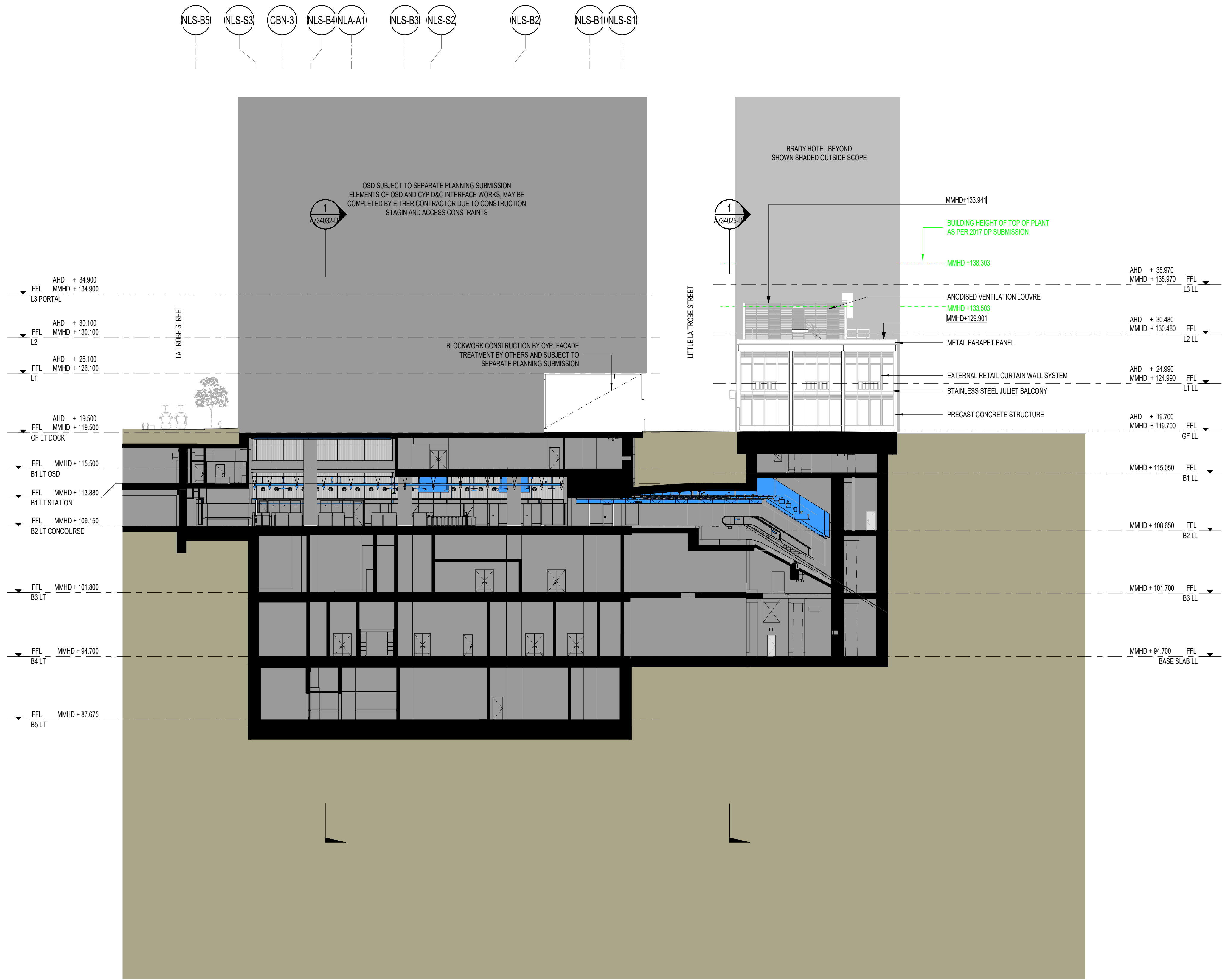
Approved Approver

Drawing Number

Revision

Scale As indicated

Sheet Size A1



1 NORTH - SOUTH SECTION - LITERATURE LANE
001 1:250

LEGEND

NOT FOR APPROVAL

SCALE BAR


0 5 10 20m


1:250

PROJECT NORTH

KEY PLAN

Consultant


Franchisee / Lessee



ARCHITECTURAL

CBD NORTH

NORTH - SOUTH CROSS SECTION

LITERATURE LANE

Up Location East, North, ID#

Down Location East, North, ID#

Datum

8. ALL SPEEDPANEL TO B1 OSD TO BE INSTALLED VERTICALLY UNLESS NOTED OTHERWISE

Revised By	In Serv	Rev.	Date	Description	Designed	Checked	Ind. Rev.	Approv.
CYP		G.6	28/09/23	ISSUED FOR DEVELOPMENT PLAN	HWV	PS/CL		
CYP		G.5	22/07/23	ISSUED FOR DEVELOPMENT PLAN	HWV	HV/GB		
CYP		G.4	14/06/22	ISSUED FOR DEVELOPMENT PLAN	HWV	HV/GB		
CYP		G.3	09/06/22	ISSUED FOR DEVELOPMENT PLAN	HWV	HV/GB		
CYP		G.2	24/03/22	ISSUED FOR DEVELOPMENT PLAN	HWV	HV/GB		
CYP		G.1	08/03/22	ISSUED FOR DEVELOPMENT PLAN	HWV	HV/GB		

This drawing has been prepared by, or compiled from information provided by, persons other than PTV. To the maximum extent permitted by law, PTV disclaims responsibility for, and makes no representations in relation to, the completeness, accuracy or quality of any information contained in this drawing. Each user of this drawing releases PTV from all and any loss, damage, cost, expense or liability in relation to the use of, or any reliance on, this drawing or the information contained in it.

All written dimensions take precedence over scaled dimensions.

This drawing is provided only for the information of the person or organisation to whom PTV provides it. It may not be provided to, or used by, any other person without PTV's prior written consent.

DEVELOPMENT PLAN SUBMISSION

Project Drawing Number

TAS-HWW-CBN-ZWD-DRG-ARC-TNC-A734015-DP

Revision

G.6

PUBLIC TRANSPORT VICTORIA

PT

File Name

Sheet No.

In Serv

Scale

As indicated

Sheet Size

A1

Drawn By

HWW

Checked By

PS/CL

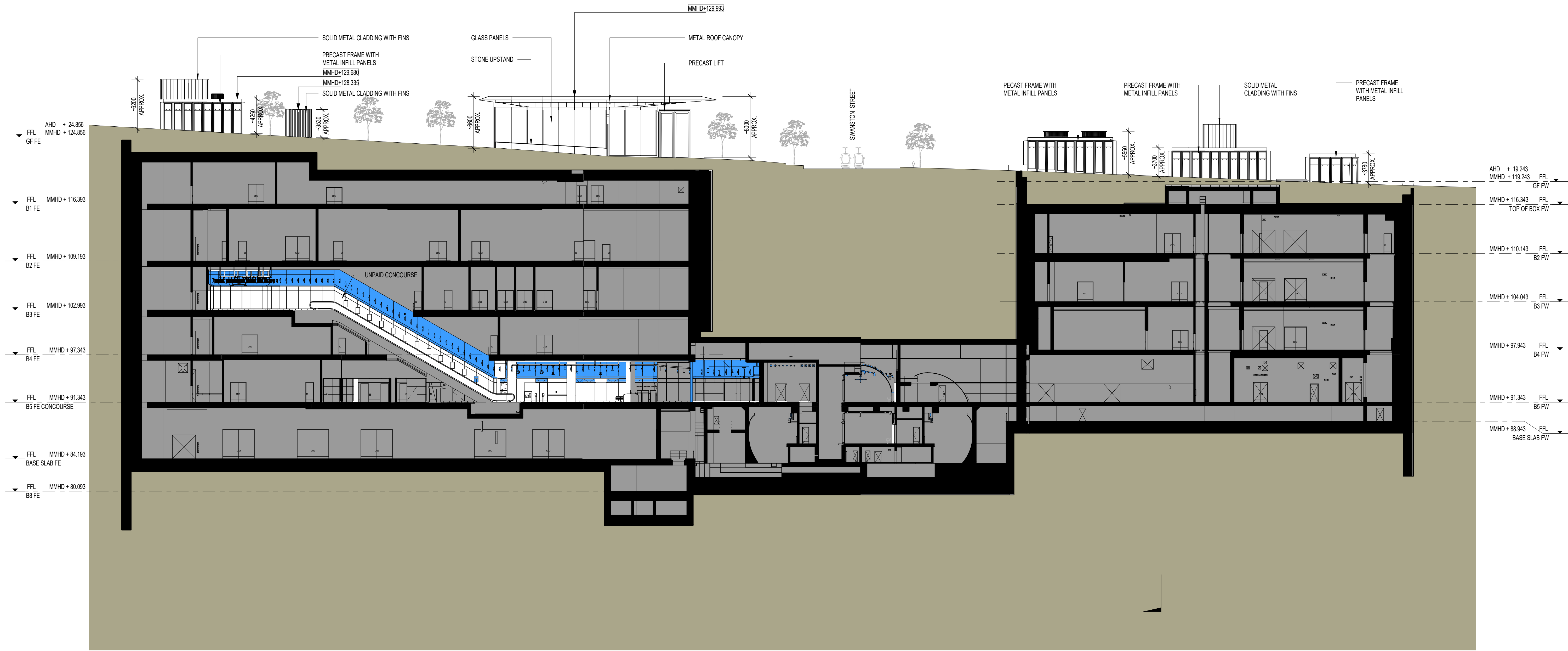
Approved

Drawing Number

Revision

Ind. Review

Approval Date



1
2000
EAST - WEST CROSS SECTION - FRANKLIN STREET
1:250

LEGEND

NOT FOR APPROVAL

SCALE BAR

0 5 10 20m

1:250

PROJECT NORTH

KEY PLAN

8. ALL SPEEDPANEL TO B1 OSD TO BE INSTALLED VERTICALLY UNLESS NOTED OTHERWISE

CYP	G.9	28/09/23	ISSUED FOR DEVELOPMENT PLAN	
CYP	G.8	22/07/22	ISSUED FOR DEVELOPMENT PLAN	
CYP	G.7	09/06/22	ISSUED FOR DEVELOPMENT PLAN	
CYP	G.6	24/03/22	ISSUED FOR DEVELOPMENT PLAN	
CYP	G.5	08/03/22	ISSUED FOR DEVELOPMENT PLAN	
CYP	G.4	18/02/22	ISSUED FOR DEVELOPMENT PLAN	
CYP	G.3	08/03/18	ISSUED FOR DEVELOPMENT PLAN	
CYP	G.2	21/11/17	ISSUED FOR DEVELOPMENT PLAN	
Revised By	In Serv	Rev	Date	Description

HW	PS/CL			
HW	HV/GB	CYP		
HW	HV/GB			
HW	HV/GB			
HW	HV/GB			
HW	HV/GB			
HW	HV/GB			
HW	HV/GB			
Designed	Checked	Ind. Rev.	Approv.	

This drawing has been prepared by, or compiled from, information provided by, persons other than PTV. To the maximum extent permitted by law, PTV disclaims responsibility for, and makes no representations in relation to, the completeness, accuracy or quality of any information contained in this drawing. Each user of this drawing releases PTV from all and any loss, damage, cost, expense or liability in relation to the use of, or any reliance on, this drawing or the information contained in it.

All written dimensions take precedence over scaled dimensions.

This drawing is provided only for the information of the person or organisation to whom PTV provides it. It may not be provided to, or used by, any other person without PTV's prior written consent.

Consultant

Franchisee / Lessee

Cross Yarra Partnership

RAIL PROJECTS VICTORIA

ARCHITECTURAL

CBD NORTH

EAST - WEST CROSS SECTION

FRANKLIN STREET

Up Location East, North, ID#	Down Location East, North, ID#	Datum
------------------------------	--------------------------------	-------

DEVELOPMENT PLAN SUBMISSION

Project Drawing Number

TAS-HWW-CBN-ZWD-DRG-ARC-TNC-A734021-DP

Revision

G.9

Drawn By	Designed By
Checked By	Ind. Review
Approved Approver	Approval Date
Drawing Number	Revision

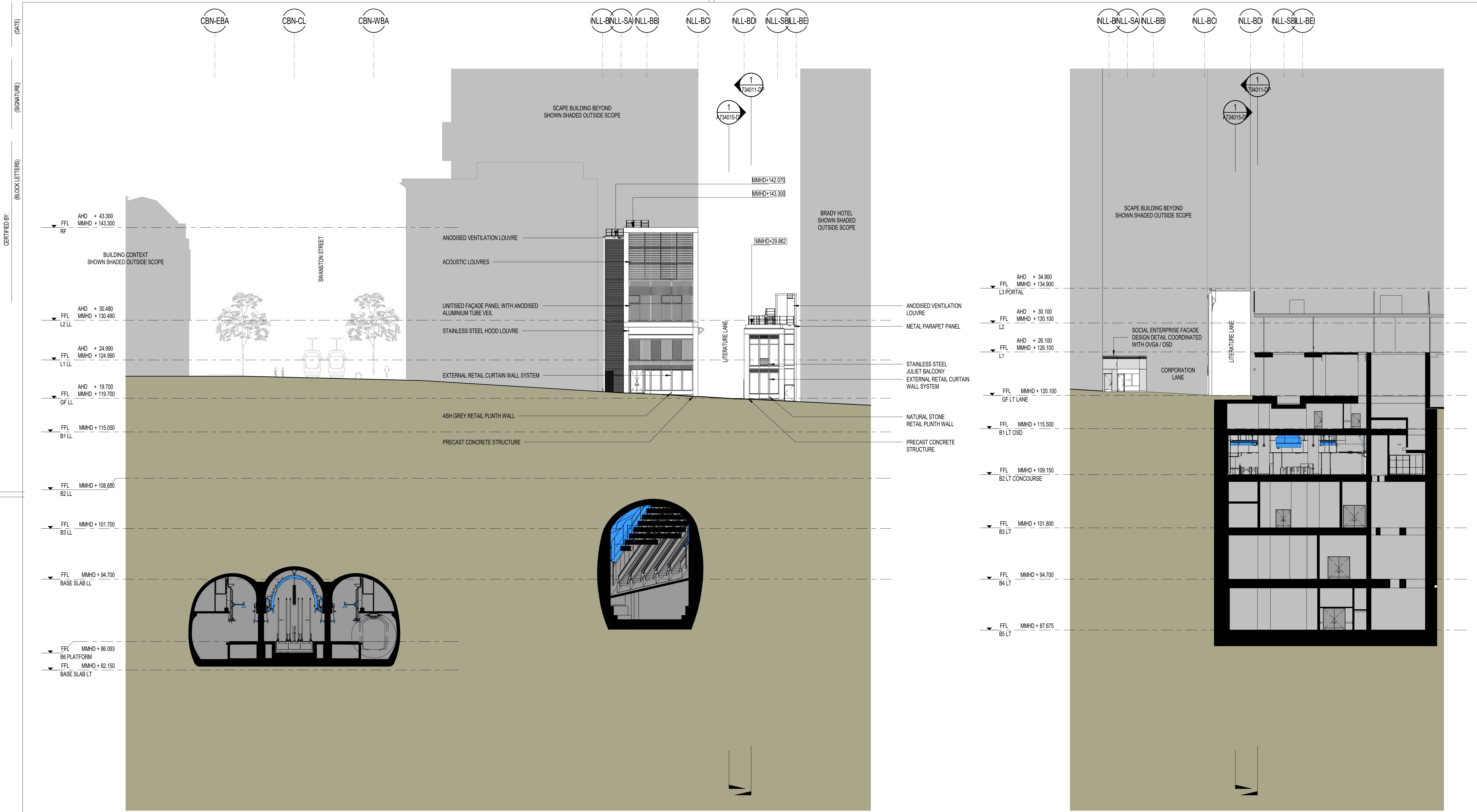
File Name

Sheet No.

In Serv

Scale As indicated

Sheet Size A1



1 EAST - WEST CROSS SECTION - LITERATURE LANE
001 1:250

2 EAST - WEST CROSS SECTION - CORPORATION LANE
A01 1:250

LEGEND

NOT FOR APPROVAL

SCALE BAR

0 5 10 20m

1:250

PROJECT NORTH

KEY PLAN

8. ALL SPEEDPANEL TO B1 OSD TO BE INSTALLED VERTICALLY UNLESS NOTED OTHERWISE

CYP		G.5	28/09/23	ISSUED FOR DEVELOPMENT PLAN		HW	PS/CL		
CYP		G.4	29/07/22	ISSUED FOR DEVELOPMENT PLAN		HW	HV/GB		
CYP		G.3	09/06/22	ISSUED FOR DEVELOPMENT PLAN		HW	HV/GB		
CYP		G.2	24/03/22	ISSUED FOR DEVELOPMENT PLAN		HW	HV/GB		
CYP		G.1	08/03/22	ISSUED FOR DEVELOPMENT PLAN		HW	HV/GB		
Revised By	In Serv	Rev	Date	Description	Designed	Checked	Ind	Rev	Approv

This drawing has been prepared by, or compiled from, information provided by persons other than PTV. To the maximum extent permitted by law, PTV disclaims any responsibility for, and makes no representations in relation to, the completeness, accuracy or quality of any information contained in this drawing. Each user of this drawing releases PTV from all and any loss, damage, cost, expense or liability in relation to the use of, or any reliance on, this drawing or the information contained in it.

All written dimensions take precedence over scaled dimensions.

This drawing is provided only for the information of the person or organisation to whom PTV provides it. It may not be provided to, or used by, any other person without PTV's prior written consent.

Consultant

Franchisee / Lessee

Cross Yarra Partnership

RAIL PROJECTS VICTORIA

ARCHITECTURAL

CBD NORTH

EAST - WEST CROSS SECTION

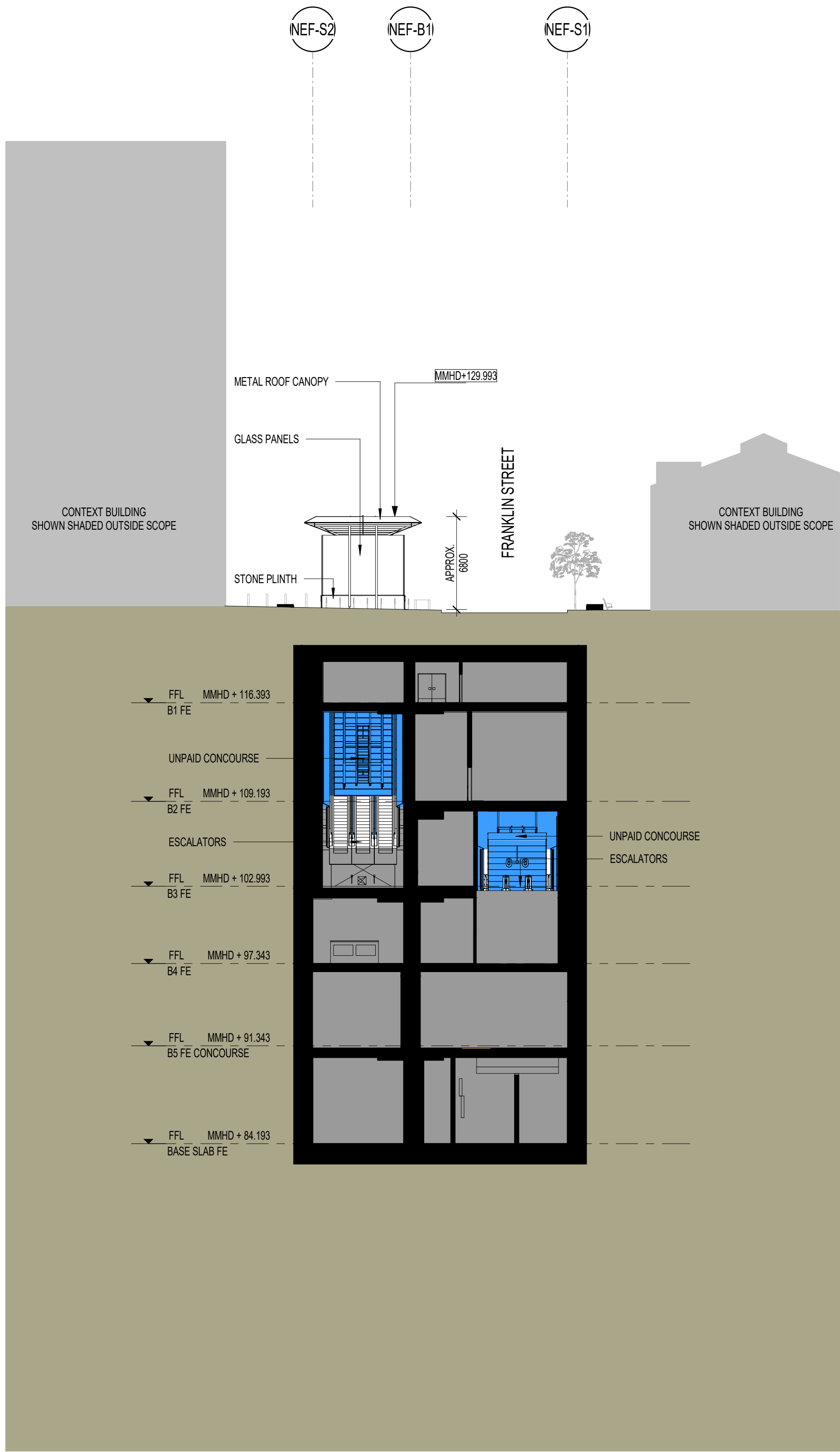
LITERATURE LANE

Up Location East, North, ID#	Down Location East, North, ID#	Datum
------------------------------	--------------------------------	-------

DEVELOPMENT PLAN SUBMISSION

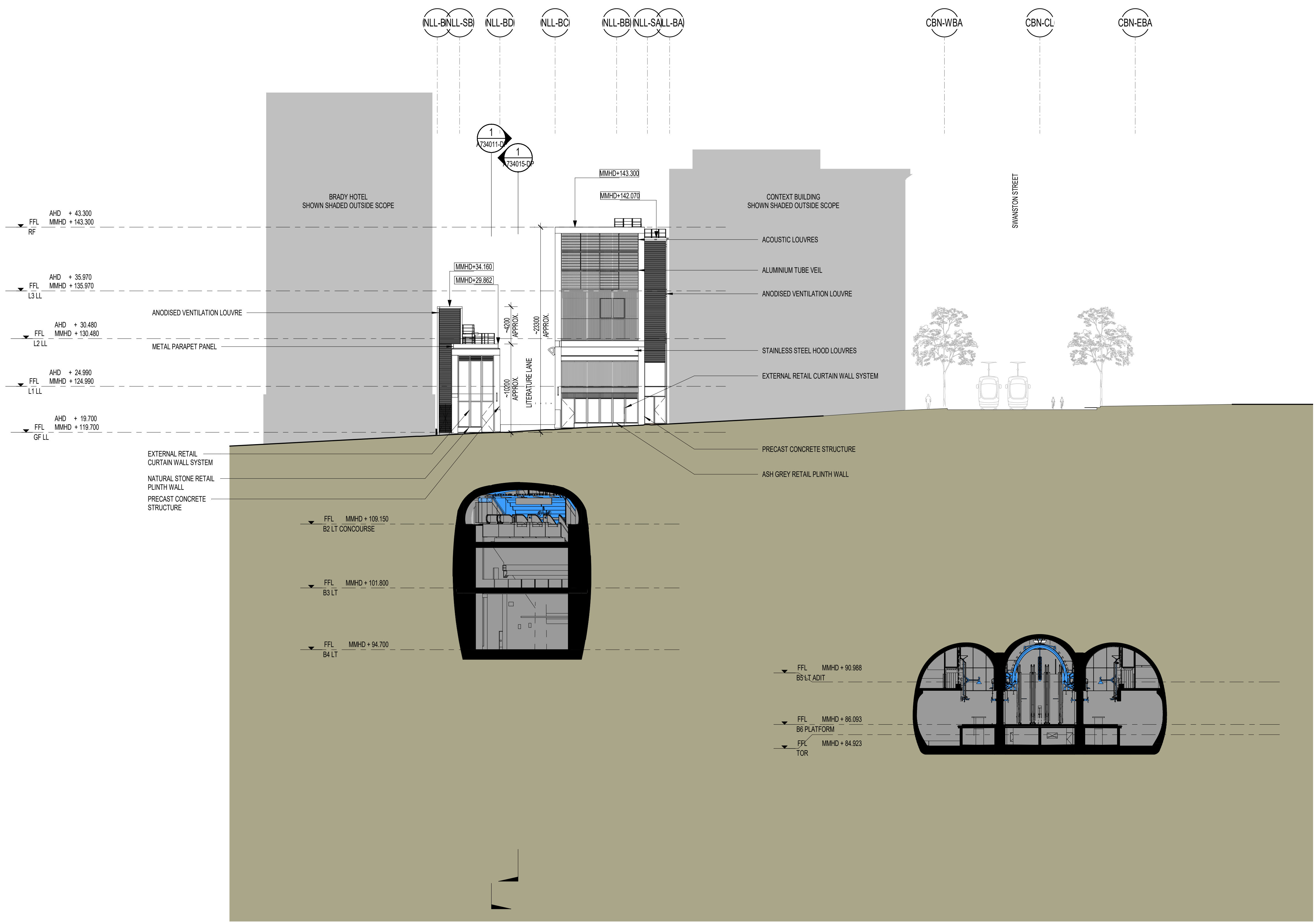
Project Drawing Number	Revision
TAS-HWW-CBN-ZWD-DRG-ARC-TNC-A734022-DP	G.5

PUBLIC TRANSPORT VICTORIA PT	Drawn By	Designed By
	Checked By	Ind. Review
File Name	Approved	Approval Date
Sheet No.	Drawing Number	Revision
In Serv	Scale	Sheet Size
As indicated		A1



1 NORTH SOUTH CROSS SECTION - FRANKLIN STREET
001 1: 250

LEGEND																				PROJECT NORTH										KEY PLAN										DEVELOPMENT PLAN SUBMISSION																																																																																																																																																																																																																																																																																																																																																																																																																																																																																																																																																																																																																																																																																																																																																																																																																																																																																																																																																																																																																																																																																																																																																																																																																																																																																																																																																																																																																																																																																																																																																																																																																																																																																																																																																																																																																																																																																																																																																																																																																																																																																																																																																																																																																																																																																																																																																																																																																																																																																																																																																																																																																																																																																																																																																																																																																																																																																																																																																																																																																																																																																																																																																																																																																																																																																																																																																																																																																																																																																																																																																																																																																																																																																																																																																																																																																																																																																																																																																																																																																																																																																																																																																																																																																																																																																																																																																																																																																																																																																																																																							
<div>NOT FOR APPROVAL</div>																				SCALE BAR																														Project Drawing Number										Revision																																																																																																																																																																																																																																																																																																																																																																																																																																																																																																																																																																																																																																																																																																																																																																																																																																																																																																																																																																																																																																																																																																																																																																																																																																																																																																																																																																																																																																																																																																																																																																																																																																																																																																																																																																																																																																																																																																																																																																																																																																																																																																																																																																																																																																																																																																																																																																																																																																																																																																																																																																																																																																																																																																																																																																																																																																																																																																																																																																																																																																																																																																																																																																																																																																																																																																																																																																																																																																																																																																																																																																																																																																																																																																																																																																																																																																																																																																																																																																																																																																																																																																																																																																																																																																																																																																																																																																																																																																																																																																																			
																																								TAS-HWW-CBN-ZWD-DRG-ARC-TNC-A734023-DP										G.8																																																																																																																																																																																																																																																																																																																																																																																																																																																																																																																																																																																																																																																																																																																																																																																																																																																																																																																																																																																																																																																																																																																																																																																																																																																																																																																																																																																																																																																																																																																																																																																																																																																																																																																																																																																																																																																																																																																																																																																																																																																																																																																																																																																																																																																																																																																																																																																																																																																																																																																																																																																																																																																																																																																																																																																																																																																																																																																																																																																																																																																																																																																																																																																																																																																																																																																																																																																																																																																																																																																																																																																																																																																																																																																																																																																																																																																																																																																																																																																																																																																																																																																																																																																																																																																																																																																																																																																																																																																																																																																													
8. ALL SPEEDPANEL TO B1 OSD TO BE INSTALLED VERTICALLY UNLESS NOTED OTHERWISE										CYP																				G.8										28/09/23										ISSUED FOR DEVELOPMENT PLAN										HWW										PS/CL																														<div>This drawing has been prepared by, or compiled from information provided by, persons other than PTV. To the maximum extent permissible by law, PTV disclaims no responsibility for, and makes no representations in relation to, the completeness, accuracy or quality of any information contained in this drawing. Each user of this drawing releases PTV from all and any loss, damage, cost, expense or liability in relation to the use of, or any reliance on, this drawing or the information contained in it.</div> <div>All written dimensions take precedence over scaled dimensions.</div> <div>This drawing is provided only for the information of the person or organisation to whom PTV provides it. It may not be provided to, or used by, any other person without PTV's prior written consent.</div>																																																																																																																																																																																																																																																																																																																																																																																																																																																																																																																																																																																																																																																																																																																																																																																																																																																																																																																																																																																																																																																																																																																																																																																																																																																																																																																																																																																																																																																																																																																																																																																																																																																																																																																																																																																																																																																																																																																																																																																																																																																																																																																																																																																																																																																																																																																																																																																																																																																																																																																																																																																																																																																																																																																																																																																																																																																																																																																																																																																																																																																																																																																																																																																																																																																																																																																																																																																																																																																																																																																																																																																																																																																																																																																																																																																																																																																																																																																																																																																																																																																																																																																																																																																																																																																																																																																																																																																																																																																																											
										CYP																				G.7										22/07/22										ISSUED FOR DEVELOPMENT PLAN										HWW										HV/GB										CYP																																																																																																																																																																																																																																																																																																																																																																																																																																																																																																																																																																																																																																																																																																																																																																																																																																																																																																																																																																																																																																																																																																																																																																																																																																																																																																																																																																																																																																																																																																																																																																																																																																																																																																																																																																																																																																																																																																																																																																																																																																																																																																																																																																																																																																																																																																																																																																																																																																																																																																																																																																																																																																																																																																																																																																																																																																																																																																																																																																																																																																																																																																																																																																																																																																																																																																																																																																																																																																																																																																																																																																																																																																																																																																																																																																																																																																																																																																																																																																																																																																																																																																																																																																																																																																																																																																																																																																																																																																																																																															
										CYP																				G.6										09/06/22										ISSUED FOR DEVELOPMENT PLAN										HWW										HV/GB																																																																																																																																																																																																																																																																																																																																																																																																																																																																																																																																																																																																																																																																																																																																																																																																																																																																																																																																																																																																																																																																																																																																																																																																																																																																																																																																																																																																																																																																																																																																																																																																																																																																																																																																																																																																																																																																																																																																																																																																																																																																																																																																																																																																																																																																																																																																																																																																																																																																																																																																																																																																																																																																																																																																																																																																																																																																																																																																																																																																																																																																																																																																																																																																																																																																																																																																																																																																																																																																																																																																																																																																																																																																																																																																																																																																																																																																																																																																																																																																																																																																																																																																																																																																																																																																																																																																																																																																																																																																																																									
										CYP																				G.5										24/03/22										ISSUED FOR DEVELOPMENT PLAN										HWW										HV/GB																																																																																																																																																																																																																																																																																																																																																																																																																																																																																																																																																																																																																																																																																																																																																																																																																																																																																																																																																																																																																																																																																																																																																																																																																																																																																																																																																																																																																																																																																																																																																																																																																																																																																																																																																																																																																																																																																																																																																																																																																																																																																																																																																																																																																																																																																																																																																																																																																																																																																																																																																																																																																																																																																																																																																																																																																																																																																																																																																																																																																																																																																																																																																																																																																																																																																																																																																																																																																																																																																																																																																																																																																																																																																																																																																																																																																																																																																																																																																																																																																																																																																																																																																																																																																																																																																																																																																																																																																																																																																																									
										CYP																				G.4										08/03/22										ISSUED FOR DEVELOPMENT PLAN										HWW										HV/GB																																																																																																																																																																																																																																																																																																																																																																																																																																																																																																																																																																																																																																																																																																																																																																																																																																																																																																																																																																																																																																																																																																																																																																																																																																																																																																																																																																																																																																																																																																																																																																																																																																																																																																																																																																																																																																																																																																																																																																																																																																																																																																																																																																																																																																																																																																																																																																																																																																																																																																																																																																																																																																																																																																																																																																																																																																																																																																																																																																																																																																																																																																																																																																																																																																																																																																																																																																																																																																																																																																																																																																																																																																																																																																																																																																																																																																																																																																																																																																																																																																																																																																																																																																																																																																																																																																																																																																																																																																																																																																									
										CYP																				G.3										18/02/22										ISSUED FOR DEVELOPMENT PLAN										HWW										HV/GB																																																																																																																																																																																																																																																																																																																																																																																																																																																																																																																																																																																																																																																																																																																																																																																																																																																																																																																																																																																																																																																																																																																																																																																																																																																																																																																																																																																																																																																																																																																																																																																																																																																																																																																																																																																																																																																																																																																																																																																																																																																																																																																																																																																																																																																																																																																																																																																																																																																																																																																																																																																																																																																																																																																																																																																																																																																																																																																																																																																																																																																																																																																																																																																																																																																																																																																																																																																																																																																																																																																																																																																																																																																																																																																																																																																																																																																																																																																																																																																																																																																																																																																																																																																																																																																																																																																																																																																																																																																																																																									
										CYP																				G.2										21/11/17										ISSUED FOR DEVELOPMENT PLAN										HWW										HV/GB																																																																																																																																																																																																																																																																																																																																																																																																																																																																																																																																																																																																																																																																																																																																																																																																																																																																																																																																																																																																																																																																																																																																																																																																																																																																																																																																																																																																																																																																																																																																																																																																																																																																																																																																																																																																																																																																																																																																																																																																																																																																																																																																																																																																																																																																																																																																																																																																																																																																																																																																																																																																																																																																																																																																																																																																																																																																																																																																																																																																																																																																																																																																																																																																																																																																																																																																																																																																																																																																																																																																																																																																																																																																																																																																																																																																																																																																																																																																																																																																																																																																																																																																																																																																																																																																																																																																																																																																																																																																																																									
										CYP																				G.1										01/11/17										ISSUED FOR DEVELOPMENT PLAN										HWW										HV/GB																																																																																																																																																																																																																																																																																																																																																																																																																																																																																																																																																																																																																																																																																																																																																																																																																																																																																																																																																																																																																																																																																																																																																																																																																																																																																																																																																																																																																																																																																																																																																																																																																																																																																																																																																																																																																																																																																																																																																																																																																																																																																																																																																																																																																																																																																																																																																																																																																																																																																																																																																																																																																																																																																																																																																																																																																																																																																																																																																																																																																																																																																																																																																																																																																																																																																																																																																																																																																																																																																																																																																																																																																																																																																																																																																																																																																																																																																																																																																																																																																																																																																																																																																																																																																																																																																																																																																																																																																																																																																																									
										Revised By										In Serv										Rev.										Date										Description										Designed										Checked										Ind. Rev.										Approv.																																																																																																																																																																																																																																																																																																																																																																																																																																																																																																																																																																																																																																																																																																																																																																																																																																																																																																																																																																																																																																																																																																																																																																																																																																																																																																																																																																																																																																																																																																																																																																																																																																																																																																																																																																																																																																																																																																																																																																																																																																																																																																																																																																																																																																																																																																																																																																																																																																																																																																																																																																																																																																																																																																																																																																																																																																																																																																																																																																																																																																																																																																																																																																																																																																																																																																																																																																																																																																																																																																																																																																																																																																																																																																																																																																																																																																																																																																																																																																																																																																																																																																																																																																																																																																																																																																																																																																																																																																																																																					



1 EAST - WEST CROSS SECTION - LITTLE LA TROBE STREET
001 1:250

LEGEND

SCALE BAR
0 5 10 20m
1:250

PROJECT NORTH

KEY PLAN

8. ALL SPEEDPANEL TO B1 OSD TO BE INSTALLED VERTICALLY UNLESS NOTED OTHERWISE

Revised By	In Serv	Rev.	Date	Description	Designed	Checked	Ind. Rev.	Approv.
CYP		G.4	28/09/23	ISSUED FOR DEVELOPMENT PLAN	HWV	PS/CL		
CYP		G.3	29/07/22	ISSUED FOR DEVELOPMENT PLAN	HWV	HV/GB		
CYP		G.2	09/06/22	ISSUED FOR DEVELOPMENT PLAN	HWV	HV/GB		
CYP		G.1	24/03/22	ISSUED FOR DEVELOPMENT PLAN	HWV	HV/GB		

This drawing has been prepared by, or compiled from, information provided by, persons other than PTV. To the maximum extent permitted by law, PTV disclaims any responsibility for, and makes no representations in relation to, the completeness, accuracy or quality of any information contained in this drawing. Each user of this drawing releases PTV from all and any loss, damage, cost, expense or liability in relation to the use of, or any reliance on, this drawing or the information contained in it.

All written dimensions take precedence over scaled dimensions.

This drawing is provided only for the information of the person or organisation to whom PTV provides it. It may not be provided to, or used by, any other person without PTV's prior written consent.

Consultant
Cross Yarra Partnership

Franchisee / Lessee
RAIL PROJECTS VICTORIA

ARCHITECTURAL
CBD NORTH
EAST - WEST CROSS SECTION
LITTLE LA TROBE STREET

Up Location
East.
North.
ID#

Down Location
East.
North.
ID#

Datum

DEVELOPMENT PLAN
SUBMISSION

Project Drawing Number
TAS-HWW-CBN-ZWD-DRG-ARC-TNC-A734025-DP

Revision
G.4

PUBLIC TRANSPORT VICTORIA PT

File Name

Sheet No.

In Serv

Scale
1:250

Sheet Size
A1

Drawn By
HWW

Checked By
PS/CL

Approved Approver

Drawing Number

Revision



 NOT FOR APPROVAL



8. ALL SPEEDPANEL TO B1 OSD TO BE INSTALLED VERTICALLY UNLESS NOTED OTHERWISE

This drawing has been prepared by, or compiled from information provided by, persons other than PTV. To the maximum extent permissible by law, PTV takes no responsibility for, and makes no representations in relation to, the completeness, accuracy or quality of any information contained in this drawing. Each use of this drawing releases PTV from all and any loss, damage, cost, expense or liability in relation to the use of, or any reliance on, this drawing or the information contained in it.

All written dimensions take precedence over scaled dimensions.

This drawing is provided only for the information of the person or organisation to whom PTV provides it. It may not be provided to, or used by, any other person without PTV's prior written consent.



7 Lessee

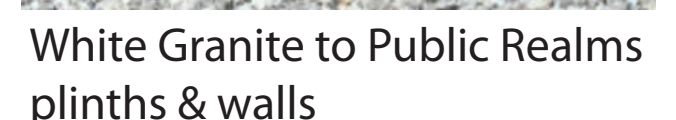
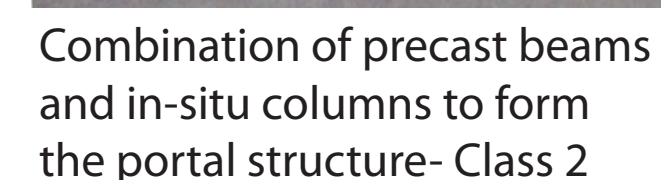
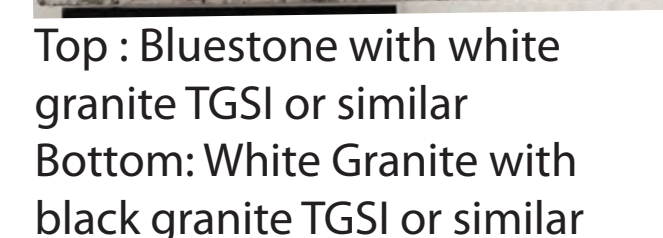
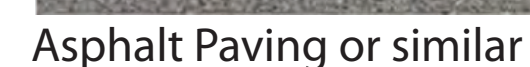
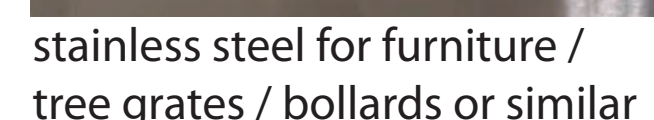
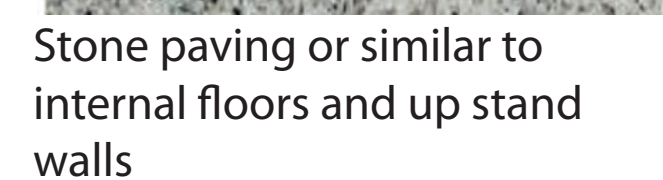
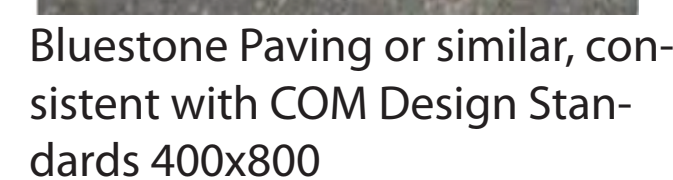
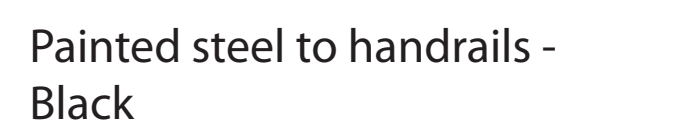
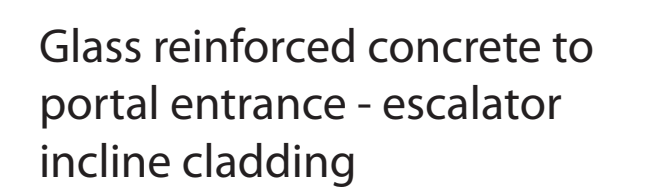
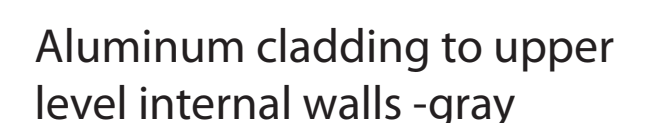
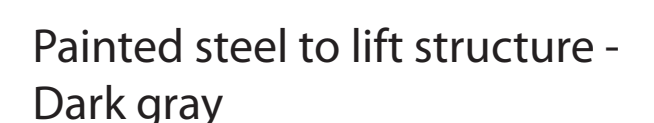
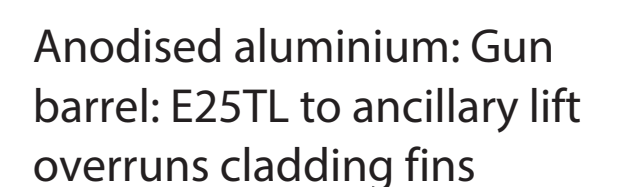
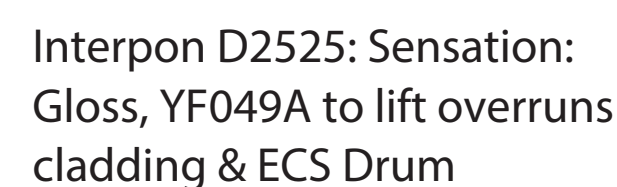
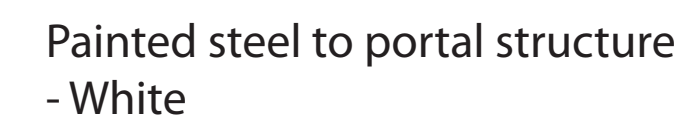
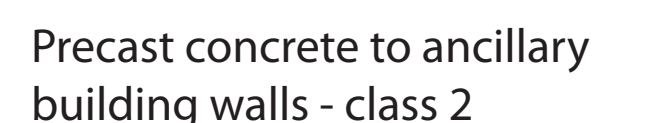
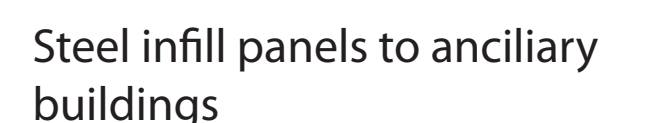
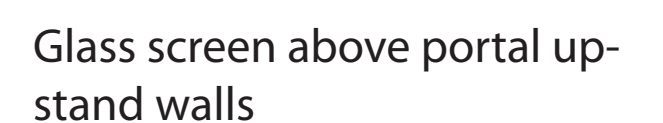
Datum	
-------	--

Revision

In Serv	
Scale	As indicated

Sheet Size	A
------------	---

A



1. REFER TO INDEX SHEET FOR DRAWING SYMBOLOGY, LEGENDS & GENERAL NOTES.

This drawing has been prepared by, or compiled from information provided by, persons other than PTV. To the maximum extent permissible by law, PTV takes no responsibility for, and makes no representation in relation to, the completeness, accuracy or quality of any information contained in this drawing. Each use of this drawing releases PTV from all and any loss, damage, cost, expense or liability in relation to the use of, or any reliance on, this drawing or the information contained in it.

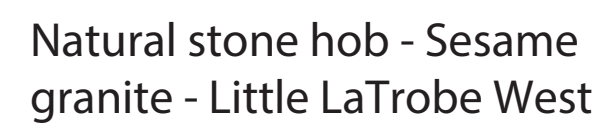
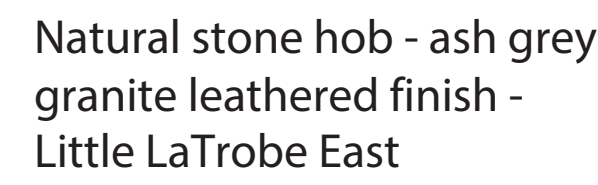
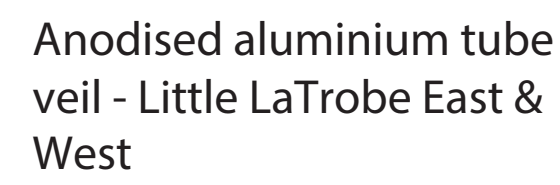
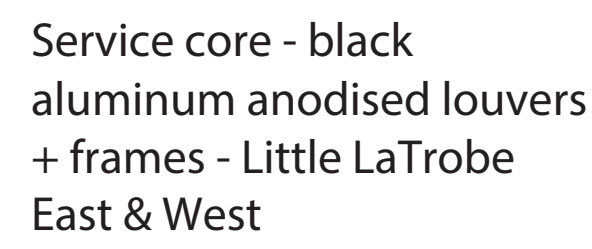
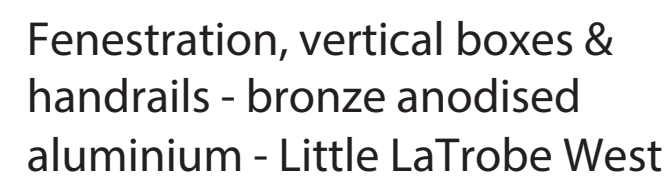
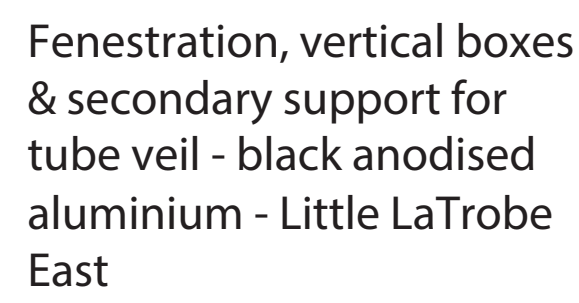
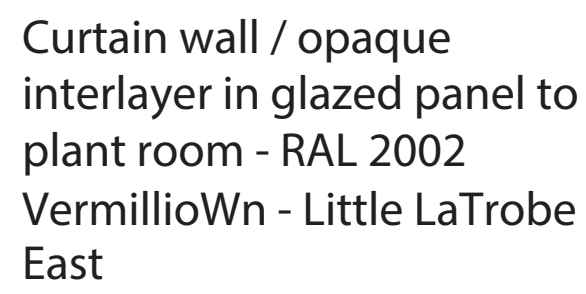
All written dimensions take precedence over scaled dimensions.

This drawing is provided only for the information of the person or organisation to whom PTV provides it. It may not be provided to, or used by, any other person without PTV's prior written consent.



Up Location	Down Location	Datum
East.	East.	
North.	North.	
ID#	ID#	

DEVELOPMENT PLAN SUBMISSION

[illegible]