



LEGL./16-236

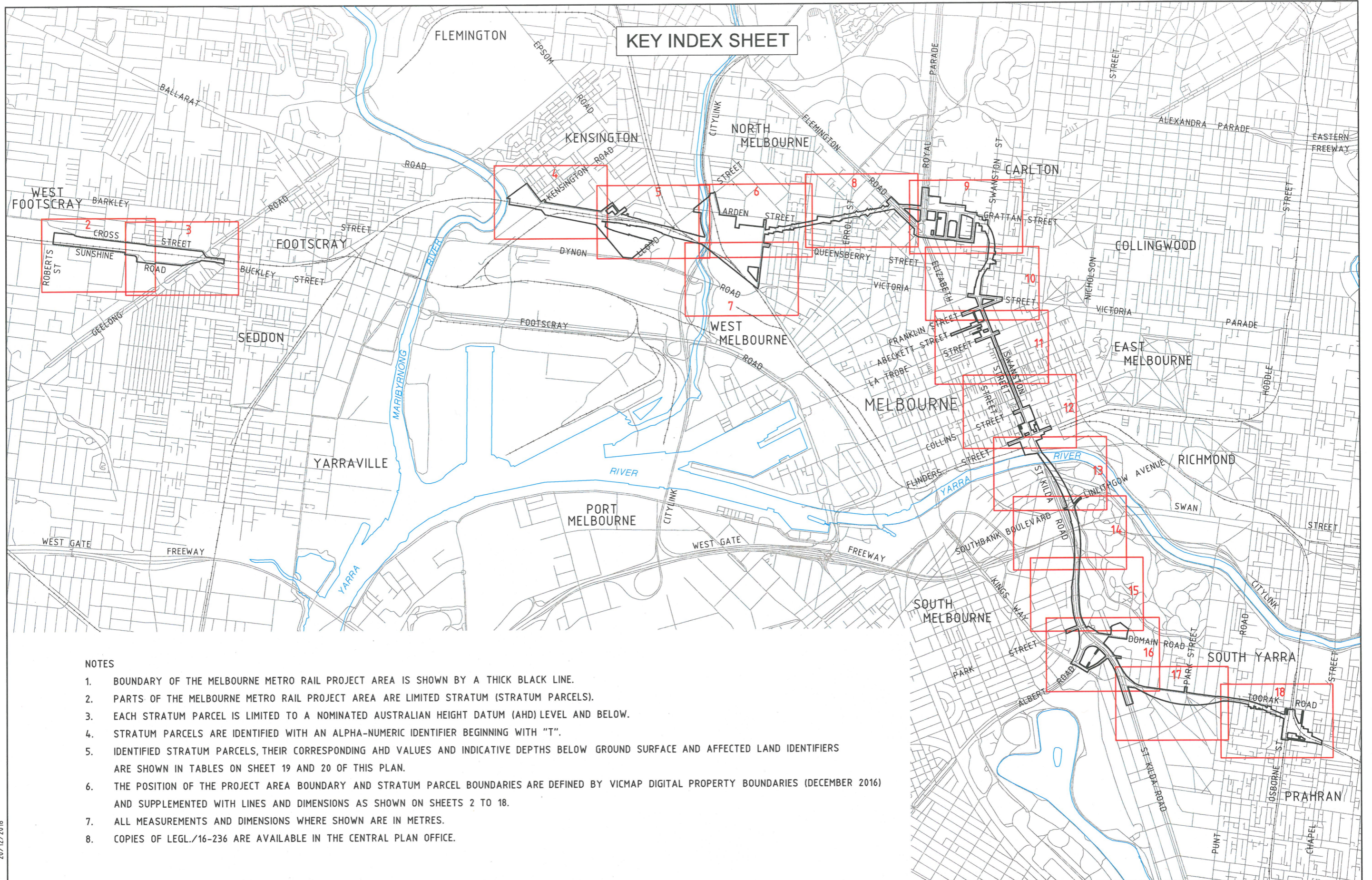
# PROJECT AREA DESIGNATION FOR MELBOURNE METRO RAIL PROJECT

---

MAJOR TRANSPORT PROJECT FACILITATION ACT 2009 – SECTION 95

Project Declared on 4 September 2015





**NOTES**

1. BOUNDARY OF THE MELBOURNE METRO RAIL PROJECT AREA IS SHOWN BY A THICK BLACK LINE.
2. PARTS OF THE MELBOURNE METRO RAIL PROJECT AREA ARE LIMITED STRATUM (STRATUM PARCELS).
3. EACH STRATUM PARCEL IS LIMITED TO A NOMINATED AUSTRALIAN HEIGHT DATUM (AHD) LEVEL AND BELOW.
4. STRATUM PARCELS ARE IDENTIFIED WITH AN ALPHA-NUMERIC IDENTIFIER BEGINNING WITH "T".
5. IDENTIFIED STRATUM PARCELS, THEIR CORRESPONDING AHD VALUES AND INDICATIVE DEPTHS BELOW GROUND SURFACE AND AFFECTED LAND IDENTIFIERS ARE SHOWN IN TABLES ON SHEET 19 AND 20 OF THIS PLAN.
6. THE POSITION OF THE PROJECT AREA BOUNDARY AND STRATUM PARCEL BOUNDARIES ARE DEFINED BY VICMAP DIGITAL PROPERTY BOUNDARIES (DECEMBER 2016) AND SUPPLEMENTED WITH LINES AND DIMENSIONS AS SHOWN ON SHEETS 2 TO 18.
7. ALL MEASUREMENTS AND DIMENSIONS WHERE SHOWN ARE IN METRES.
8. COPIES OF LEGL./16-236 ARE AVAILABLE IN THE CENTRAL PLAN OFFICE.

20/12/2016

PLAN TO DESIGNATE THE PROJECT AREA PURSUANT TO SECTION 95(2) MAJOR TRANSPORT PROJECTS FACILITATION ACT 2009  
 Lodged in the Central Plan Office  
 Dated this 20th day of December 2016  
*John E. Tulloch* JOHN E. TULLOCH  
 Surveyor-General

**LEGEND**

- 1 SHEET / SHEET NUMBER
- BOUNDARY OF MELBOURNE METRO RAIL PROJECT AREA



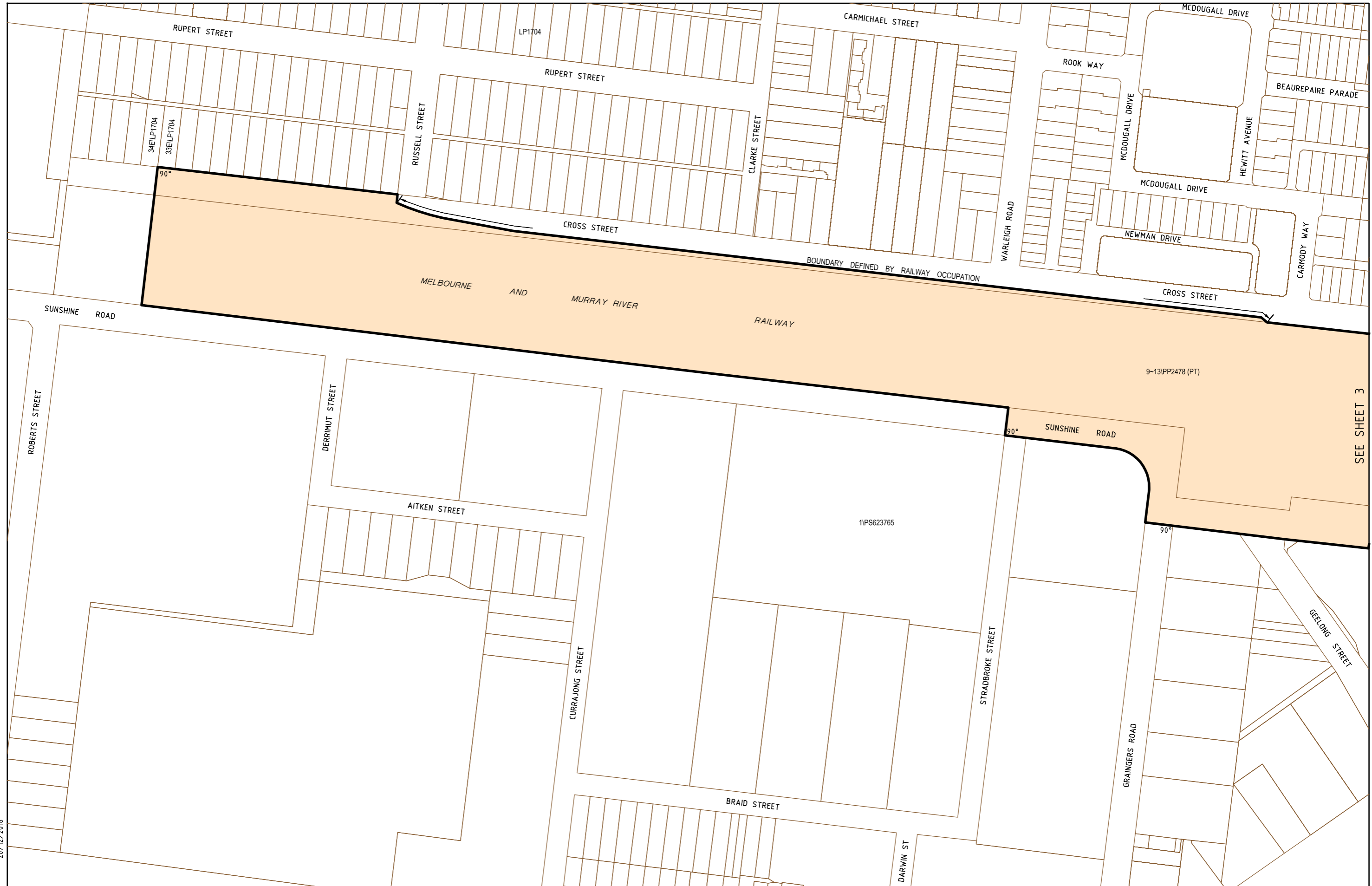
ORIGINAL SHEET SIZE A3  
 SCALE 1:30,000  
 0 300 600 900  
 SCALE OF METRES

**MELBOURNE METRO RAIL PROJECT**

**PROJECT AREA**

SHEET 1 of 20 SHEETS

LEGL./16-236



20/12/2016

29234-lis--cb-01

LEGEND	
	BOUNDARY OF MELBOURNE METRO RAIL PROJECT AREA
	MELBOURNE METRO RAIL PROJECT AREA (UNLIMITED STRATUM)
	MELBOURNE METRO RAIL PROJECT AREA - STRATUM PARCEL (LIMITED STRATUM - SEE TABLE ON SHEET 19)



ORIGINAL SHEET SIZE A3  
SCALE 1:2,500

SCALE OF METRES

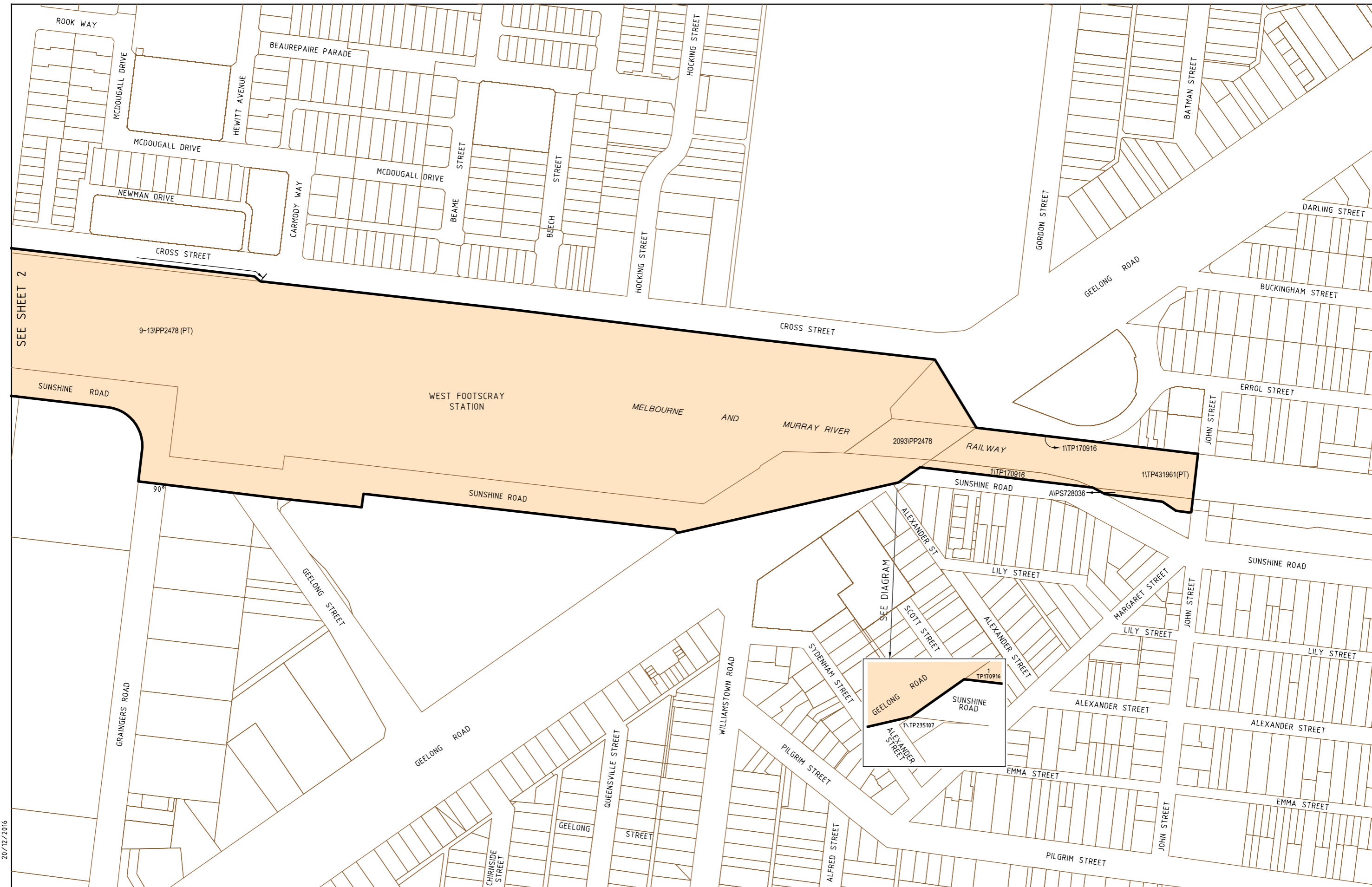
## MELBOURNE METRO RAIL PROJECT

PROJECT AREA

SHEET 2 of 20 SHEETS

LEGL./16-236

SEE SHEET 3



SEE SHEET 2

9-13PP2478 (PT)

WEST FOOTSCRAY STATION

MELBOURNE AND MURRAY RIVER

2093PP2478

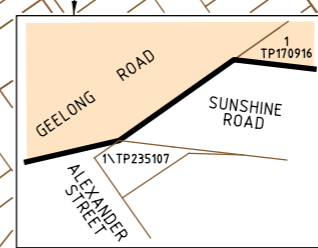
RAILWAY

11TP170916

11TP431961(P.T)

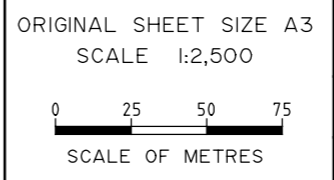
AIP5728036

90°



20/12/2016  
29234-lis--cb-01

LEGEND	
	BOUNDARY OF MELBOURNE METRO RAIL PROJECT AREA
	MELBOURNE METRO RAIL PROJECT AREA (UNLIMITED STRATUM)
	MELBOURNE METRO RAIL PROJECT AREA - STRATUM PARCEL (LIMITED STRATUM - SEE TABLE ON SHEET 19)

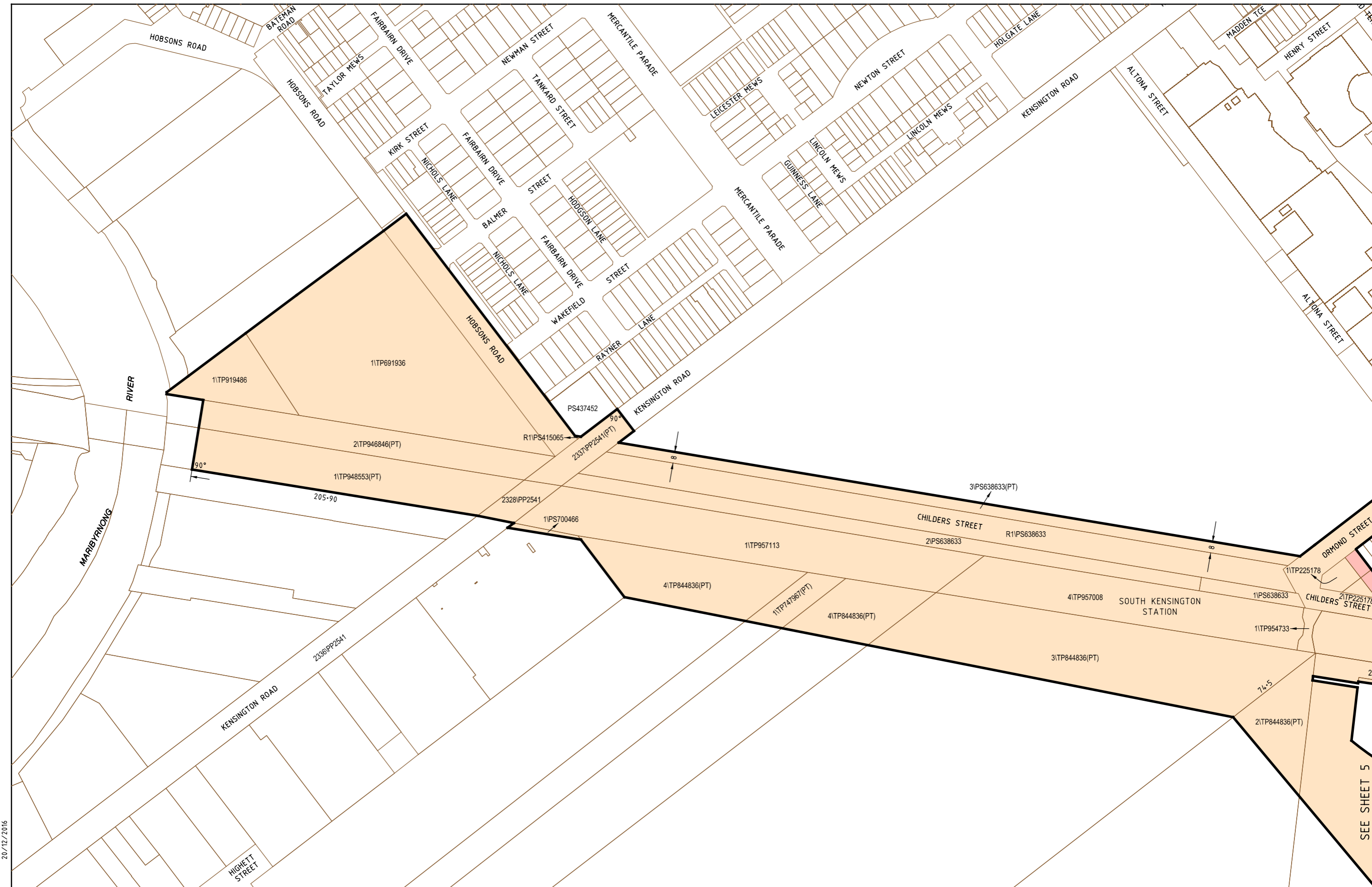


# MELBOURNE METRO RAIL PROJECT



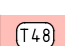
PROJECT AREA

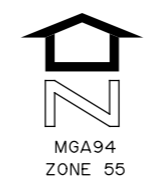
SHEET 3 of 20 SHEETS

LEGL./16-236




20/12/2016  
29234-lis--cb-01

LEGEND	
	BOUNDARY OF MELBOURNE METRO RAIL PROJECT AREA
	MELBOURNE METRO RAIL PROJECT AREA (UNLIMITED STRATUM)
	MELBOURNE METRO RAIL PROJECT AREA - STRATUM PARCEL (LIMITED STRATUM - SEE TABLE ON SHEET 19)



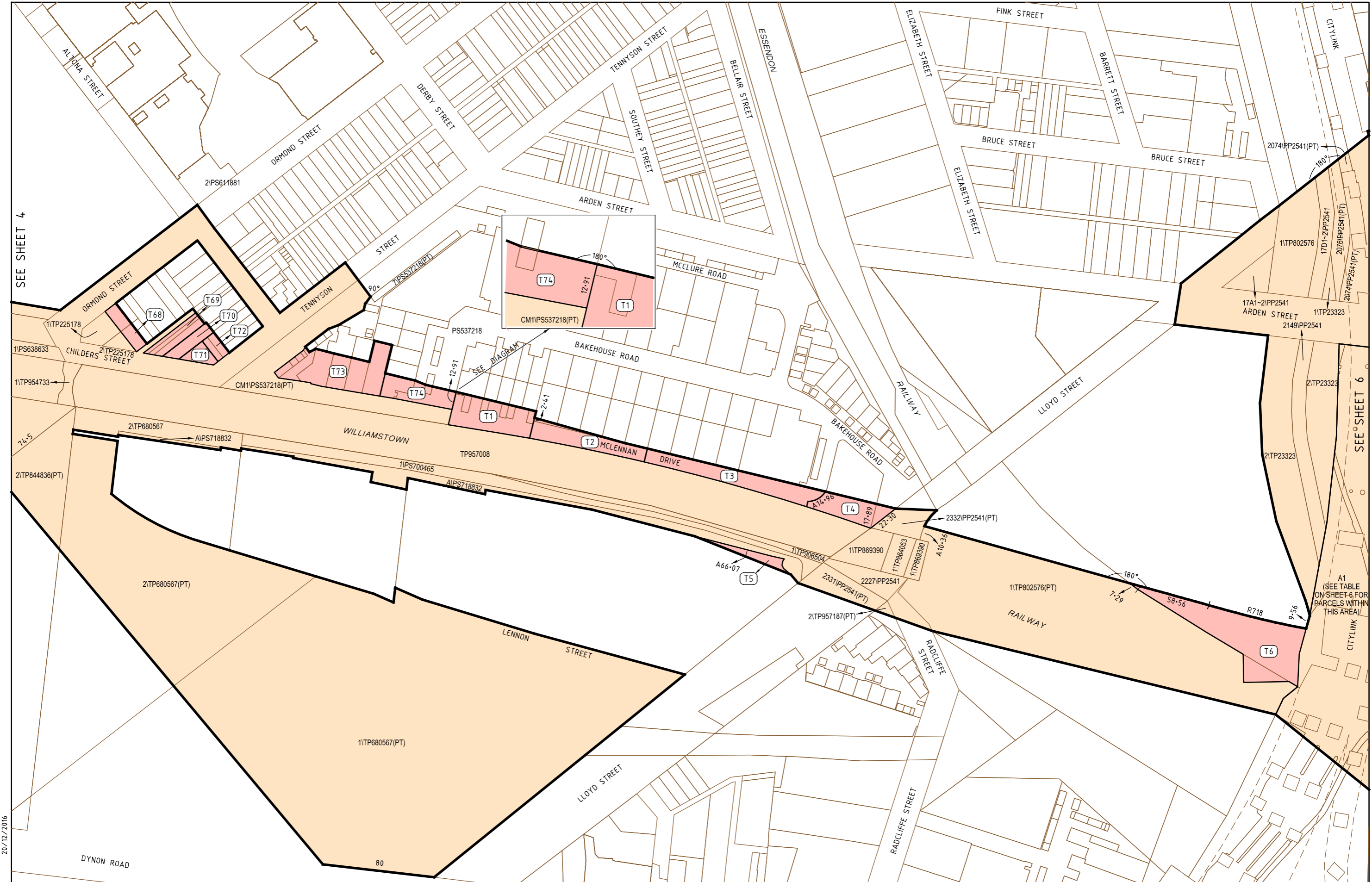
ORIGINAL SHEET SIZE A3  
SCALE 1:2,500



SCALE OF METRES

<b>MELBOURNE METRO RAIL PROJECT</b>	
<b>PROJECT AREA</b>	
SHEET 4 of 20 SHEETS	LEGL./16-236

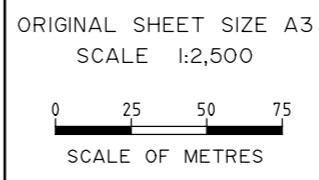
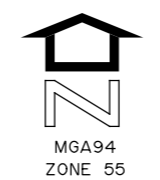
SEE SHEET 5



SEE SHEET 4

SEE SHEET 6

	BOUNDARY OF MELBOURNE METRO RAIL PROJECT AREA
	MELBOURNE METRO RAIL PROJECT AREA (UNLIMITED STRATUM)
	MELBOURNE METRO RAIL PROJECT AREA - STRATUM PARCEL (LIMITED STRATUM - SEE TABLE ON SHEET 19)



# MELBOURNE METRO RAIL PROJECT

PROJECT AREA

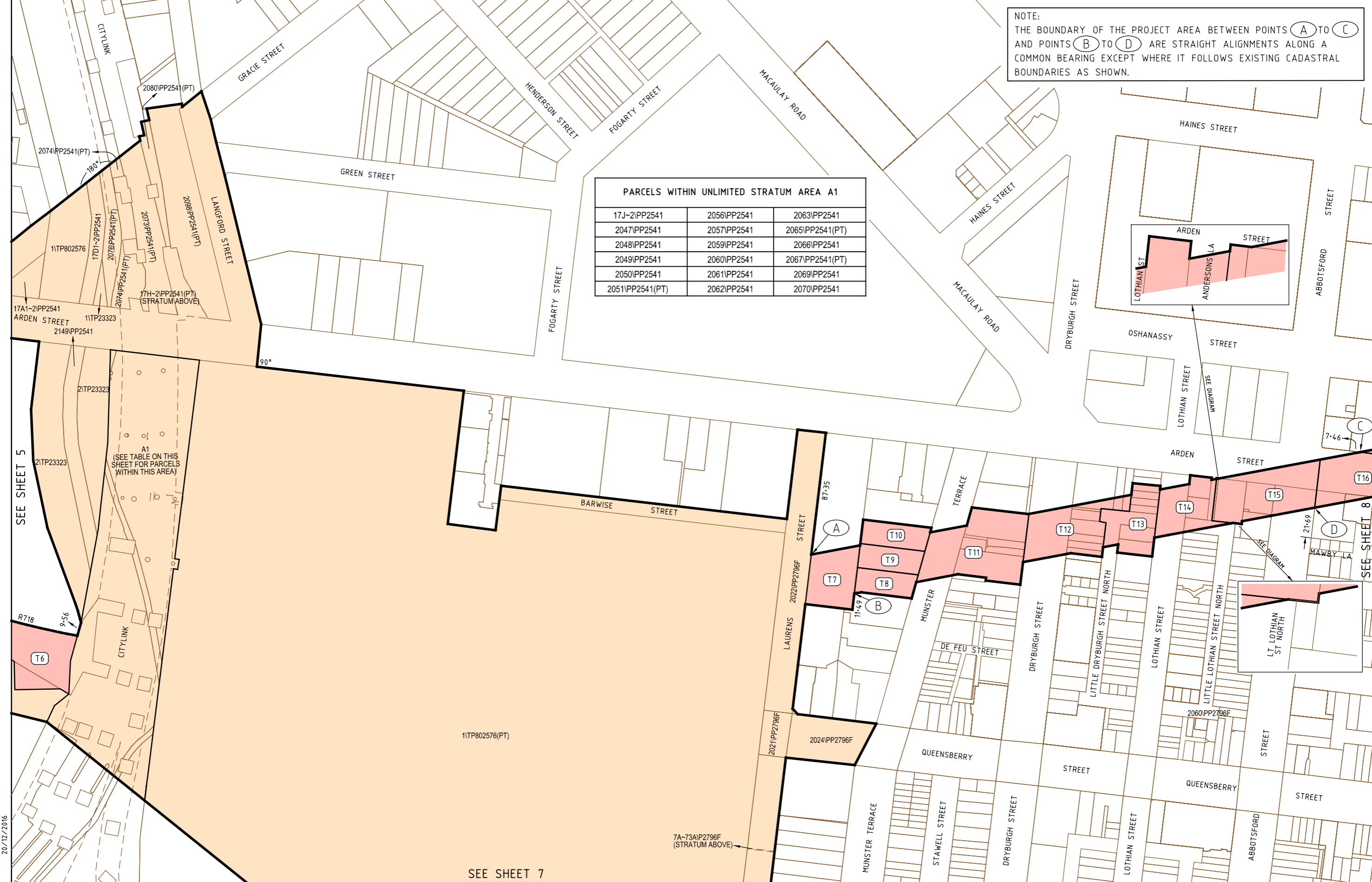
SHEET 5 of 20 SHEETS

LEGL./16-236

29234-lis--cb-01  
20/12/2016

NOTE:  
 THE BOUNDARY OF THE PROJECT AREA BETWEEN POINTS (A) TO (C) AND POINTS (B) TO (D) ARE STRAIGHT ALIGNMENTS ALONG A COMMON BEARING EXCEPT WHERE IT FOLLOWS EXISTING CADASTRAL BOUNDARIES AS SHOWN.

PARCELS WITHIN UNLIMITED STRATUM AREA A1		
17J-2\PP2541	2056\PP2541	2063\PP2541
2047\PP2541	2057\PP2541	2065\PP2541(PT)
2048\PP2541	2059\PP2541	2066\PP2541
2049\PP2541	2060\PP2541	2067\PP2541(PT)
2050\PP2541	2061\PP2541	2069\PP2541
2051\PP2541(PT)	2062\PP2541	2070\PP2541

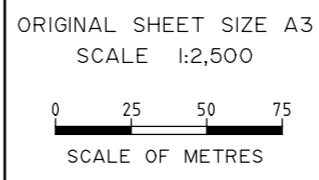
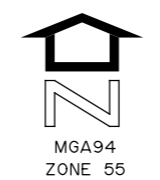


SEE SHEET 5

SEE SHEET 8

SEE SHEET 7

LEGEND	
	BOUNDARY OF MELBOURNE METRO RAIL PROJECT AREA
	MELBOURNE METRO RAIL PROJECT AREA (UNLIMITED STRATUM)
	MELBOURNE METRO RAIL PROJECT AREA - STRATUM PARCEL (LIMITED STRATUM - SEE TABLE ON SHEET 19)



<b>MELBOURNE METRO RAIL PROJECT</b>	
<b>PROJECT AREA</b>	
SHEET 6 of 20 SHEETS	LEGL./16-236

29234-lis--cb-01  
20/12/2016

SEE SHEET 6

1TP802576(PT)

1TP802576(PT)

A1  
(SEE TABLE  
ON SHEET 6 FOR  
PARCELS WITHIN  
THIS AREA)

7A-73A/P2796F  
(STRATUM ABOVE)

2021/PP2796F

2024/PP2796F

2060

QUEENSBERRY

STREET

QUEE

MUNSTER TERRACE

STAWELL STREET

DRYBURGH STREET

LOTHIAN STREET

LITTLE DRYBURGH STREET SOUTH

LITTLE LOTHIAN STREET SOUTH

CITYLINK

MONIE PONDS CREEK TRAIL

1TP802576

LAURENS  
2023/PP2796F STREET

1TP704498

VICTORIA STREET

ANDERSON STREET

STAWELL STREET

DRYBURGH STREET

DYNON ROAD

MILLER STREET

MILLER STREET

2019/PP514B

DYNON ROAD

STAWELL STREET

SPENCER STREET

RAILWAY PLACE

DRYBURGH STREET

IRELAND STREET




ABBOTSFORD STREET

ADDERLEY STREET

20/12/2016

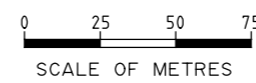
29234-lis--cb-01

LEGEND

-  BOUNDARY OF MELBOURNE METRO RAIL PROJECT AREA
-  MELBOURNE METRO RAIL PROJECT AREA (UNLIMITED STRATUM)
-  MELBOURNE METRO RAIL PROJECT AREA - STRATUM PARCEL (LIMITED STRATUM - SEE TABLE ON SHEET 19)



ORIGINAL SHEET SIZE A3  
SCALE 1:2,500



MELBOURNE METRO RAIL PROJECT

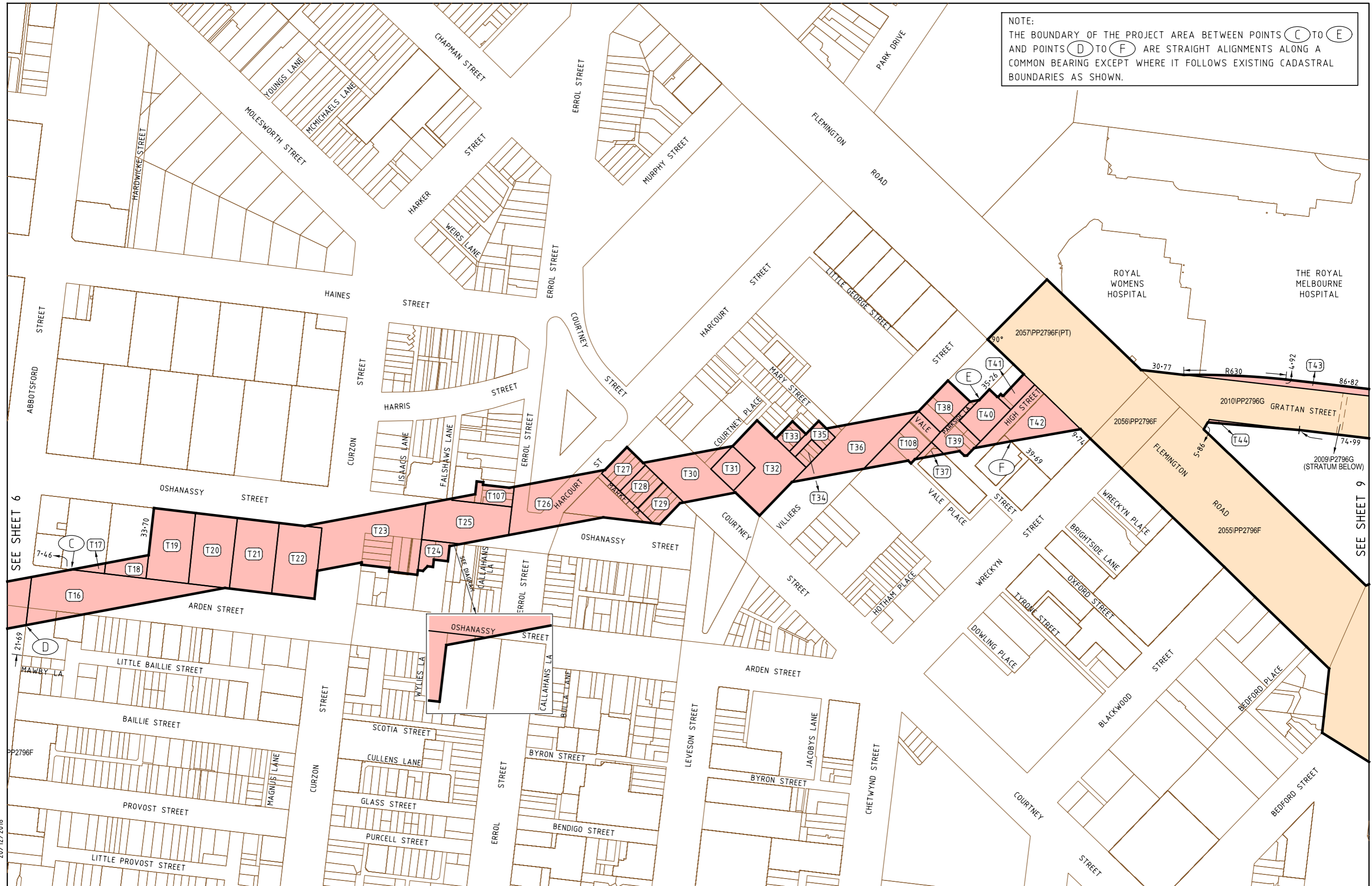
PROJECT AREA

SHEET 7 of 20 SHEETS

LEGL./16-236



NOTE:  
 THE BOUNDARY OF THE PROJECT AREA BETWEEN POINTS (C) TO (E)  
 AND POINTS (D) TO (F) ARE STRAIGHT ALIGNMENTS ALONG A  
 COMMON BEARING EXCEPT WHERE IT FOLLOWS EXISTING CADASTRAL  
 BOUNDARIES AS SHOWN.

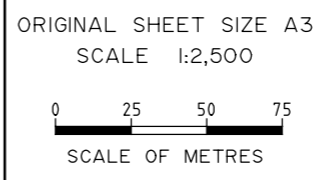
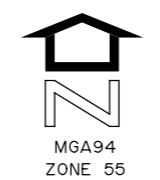


SEE SHEET 6

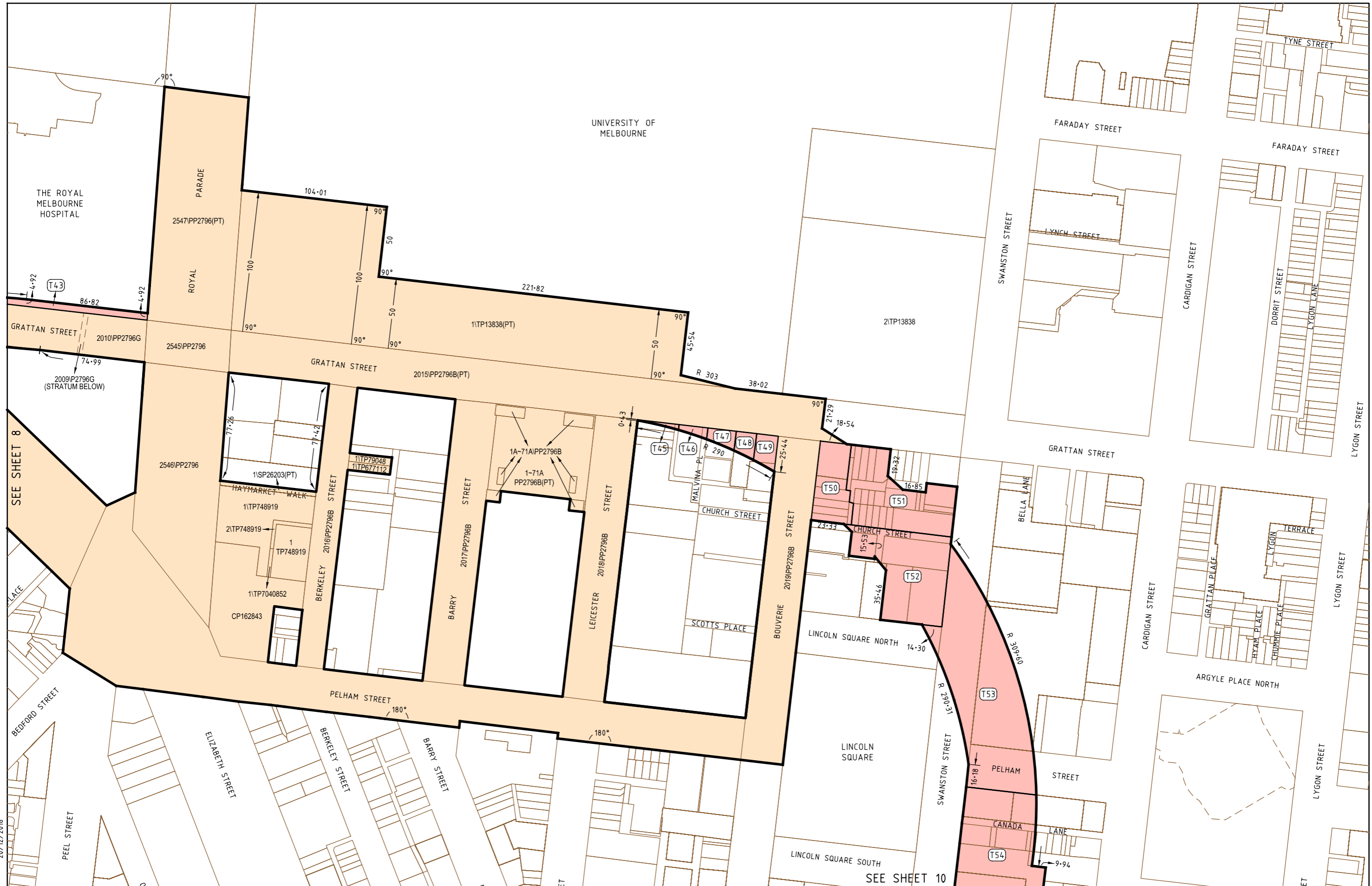
SEE SHEET 9

20/12/2016  
 29234-lis--cb-01

LEGEND	
	BOUNDARY OF MELBOURNE METRO RAIL PROJECT AREA
	MELBOURNE METRO RAIL PROJECT AREA (UNLIMITED STRATUM)
	MELBOURNE METRO RAIL PROJECT AREA - STRATUM PARCEL (LIMITED STRATUM - SEE TABLE ON SHEET 19)

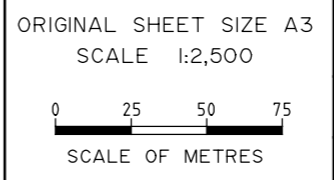
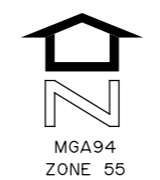


<b>MELBOURNE METRO RAIL PROJECT</b>	
<b>PROJECT AREA</b>	
SHEET 8	of 20 SHEETS
LEGL./16-236	

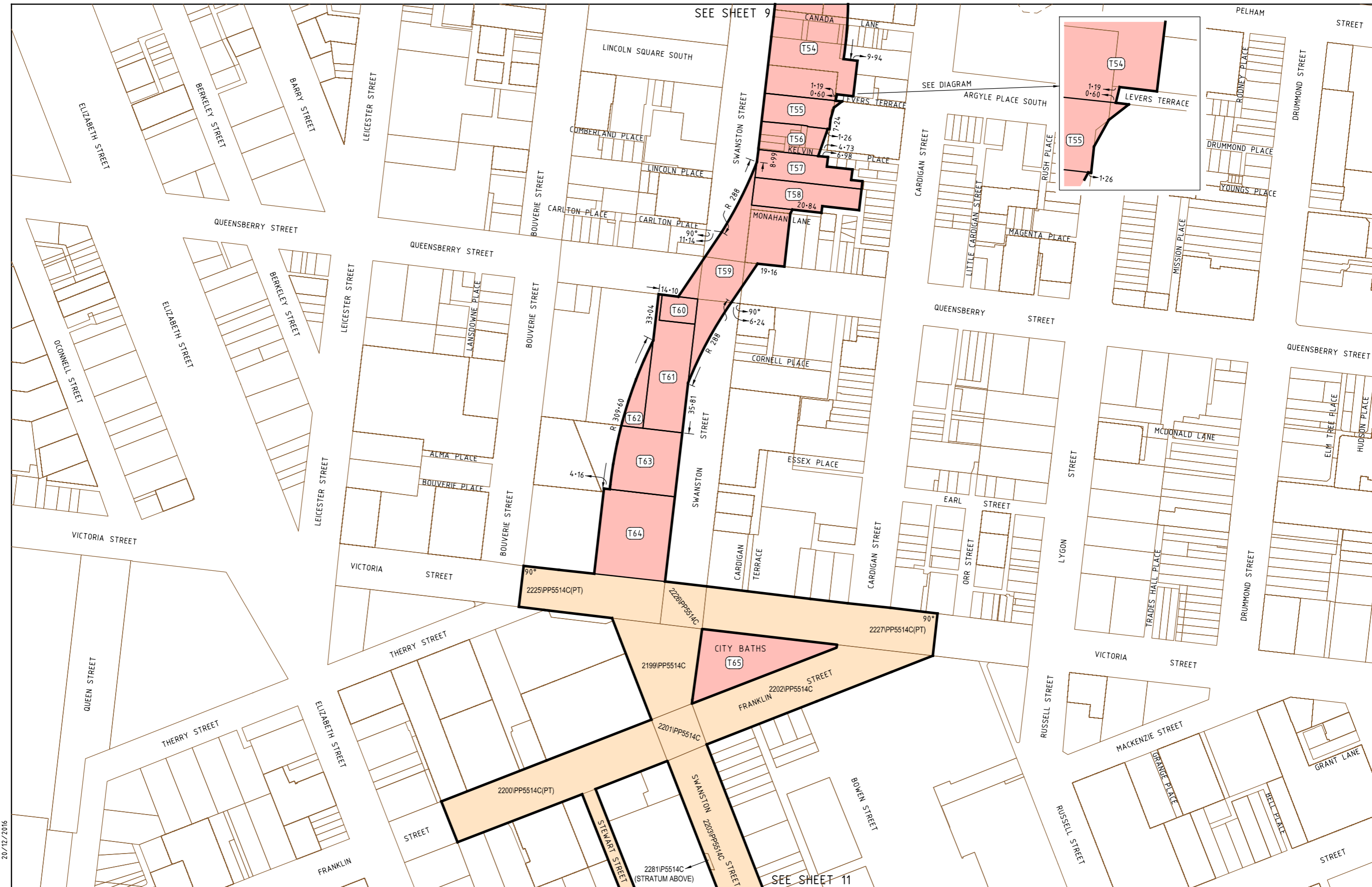


20/12/2016  
29234-lis--cb-01

LEGEND	
	BOUNDARY OF MELBOURNE METRO RAIL PROJECT AREA
	MELBOURNE METRO RAIL PROJECT AREA (UNLIMITED STRATUM)
	MELBOURNE METRO RAIL PROJECT AREA - STRATUM PARCEL (LIMITED STRATUM - SEE TABLE ON SHEET 19)

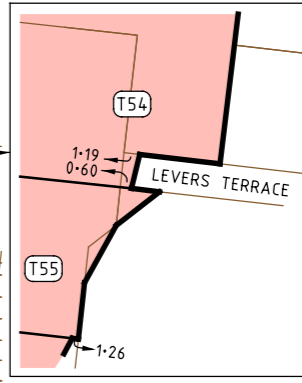


<b>MELBOURNE METRO RAIL PROJECT</b>	
<b>PROJECT AREA</b>	
SHEET 9 of 20 SHEETS	LEGL./16-236



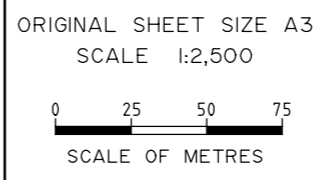
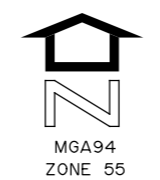
SEE SHEET 9

SEE SHEET 11

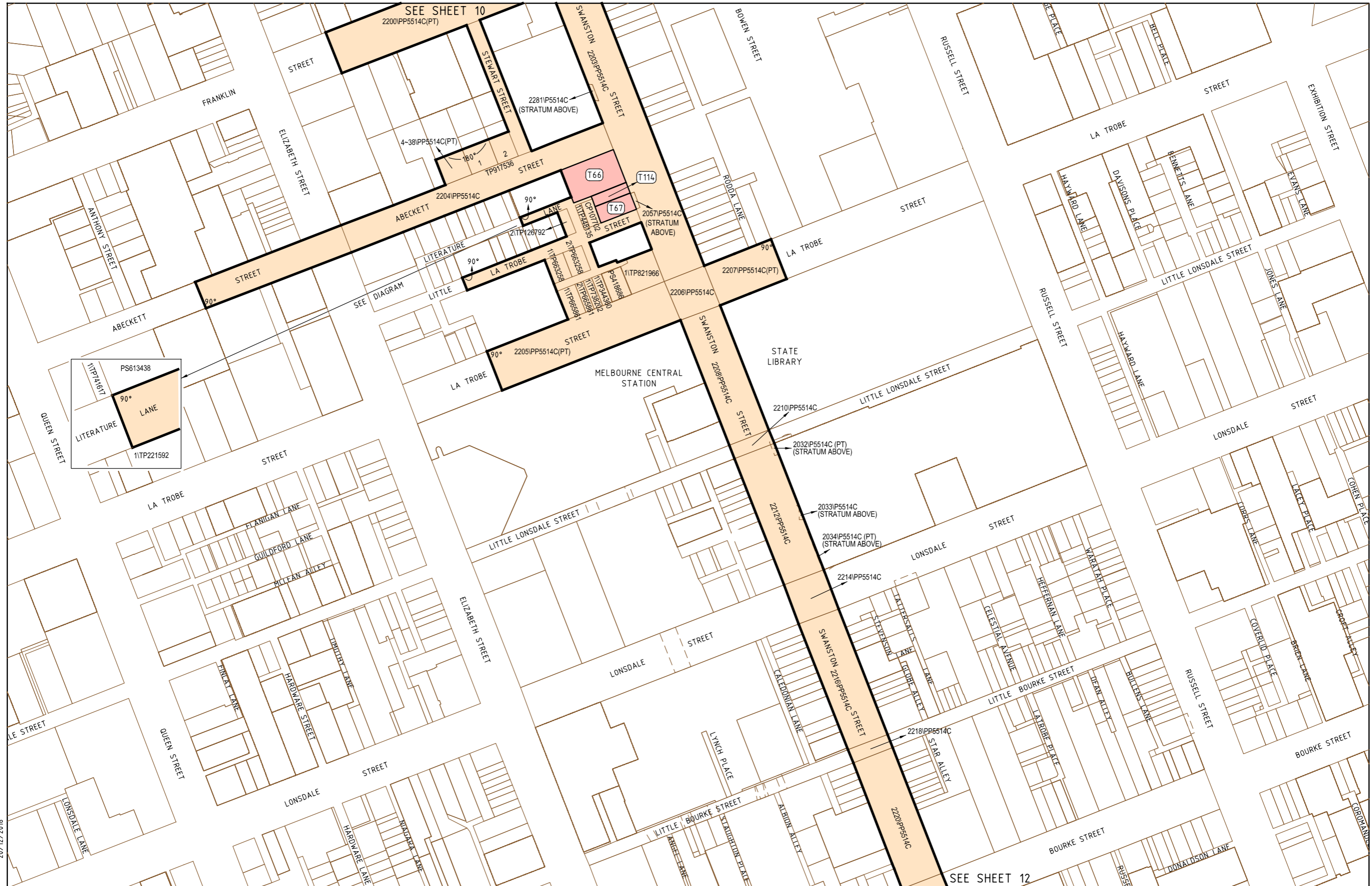


29234-lis--cb-01  
20/12/2016

LEGEND	
	BOUNDARY OF MELBOURNE METRO RAIL PROJECT AREA
	MELBOURNE METRO RAIL PROJECT AREA (UNLIMITED STRATUM)
	MELBOURNE METRO RAIL PROJECT AREA - STRATUM PARCEL (LIMITED STRATUM - SEE TABLE ON SHEET 19)



<b>MELBOURNE METRO RAIL PROJECT</b>	
<b>PROJECT AREA</b>	
SHEET 10 of 20 SHEETS	LEGL./16-236



20/12/2016

29234-lis--cb-01

LEGEND	
	BOUNDARY OF MELBOURNE METRO RAIL PROJECT AREA
	MELBOURNE METRO RAIL PROJECT AREA (UNLIMITED STRATUM)
	MELBOURNE METRO RAIL PROJECT AREA - STRATUM PARCEL (LIMITED STRATUM - SEE TABLE ON SHEET 19)



ORIGINAL SHEET SIZE A3  
SCALE 1:2,500

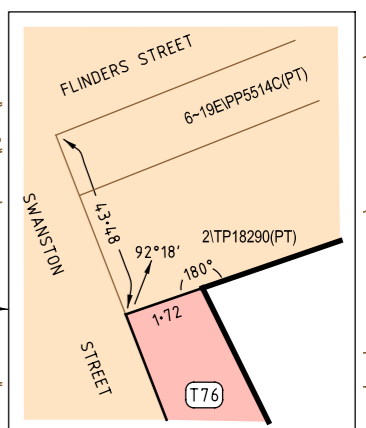
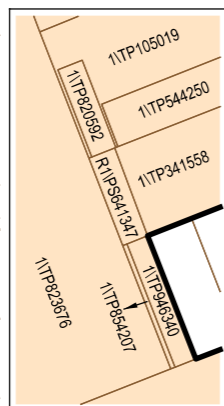
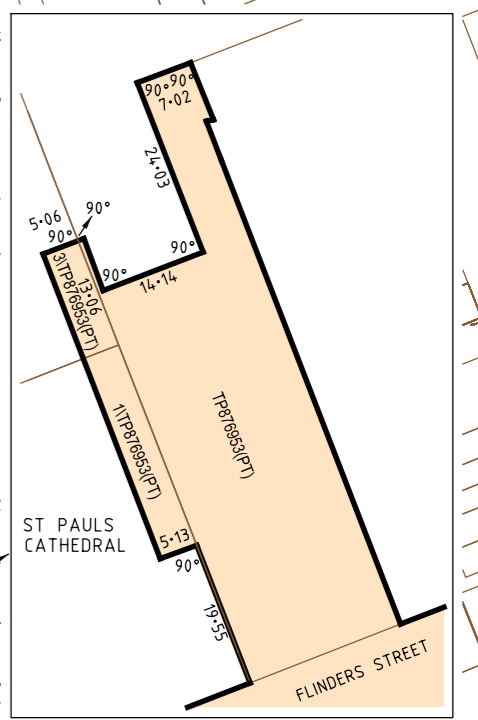
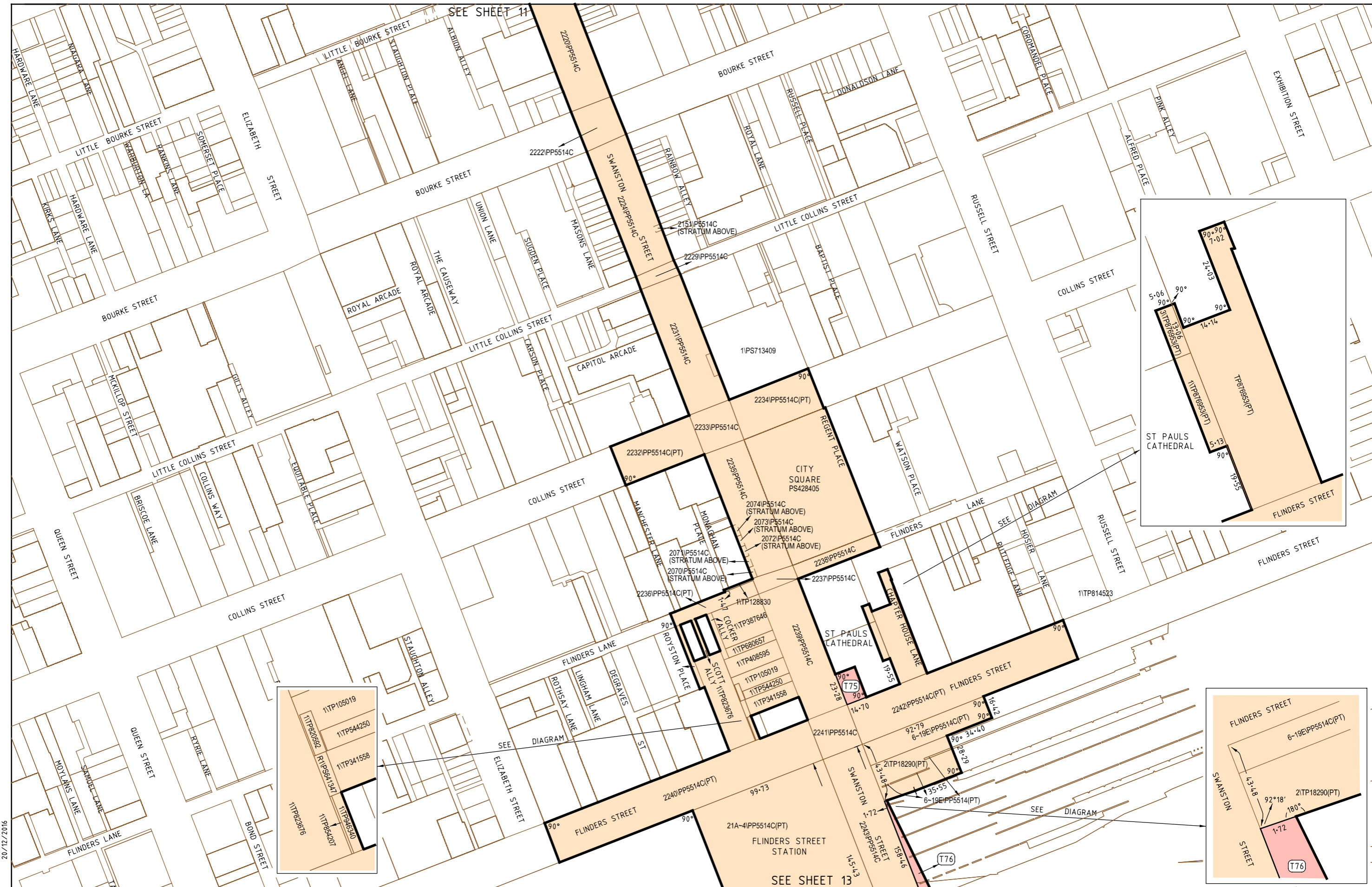
SCALE OF METRES

# MELBOURNE METRO RAIL PROJECT

PROJECT AREA

SHEET 11 of 20 SHEETS

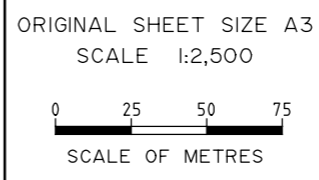
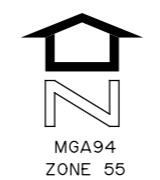
LEGL./16-236



20/12/2016

29234-lis--cb-01

LEGEND	
	BOUNDARY OF MELBOURNE METRO RAIL PROJECT AREA
	MELBOURNE METRO RAIL PROJECT AREA (UNLIMITED STRATUM)
	MELBOURNE METRO RAIL PROJECT AREA - STRATUM PARCEL (LIMITED STRATUM - SEE TABLE ON SHEET 19)



<b>MELBOURNE METRO RAIL PROJECT</b>	
<b>PROJECT AREA</b>	
SHEET 12 of 20 SHEETS	LEGL./16-236



20/12/2016  
29234-lis--cb-01

LEGEND	
	BOUNDARY OF MELBOURNE METRO RAIL PROJECT AREA
	MELBOURNE METRO RAIL PROJECT AREA (UNLIMITED STRATUM)
	MELBOURNE METRO RAIL PROJECT AREA - STRATUM PARCEL (LIMITED STRATUM - SEE TABLE ON SHEET 19)



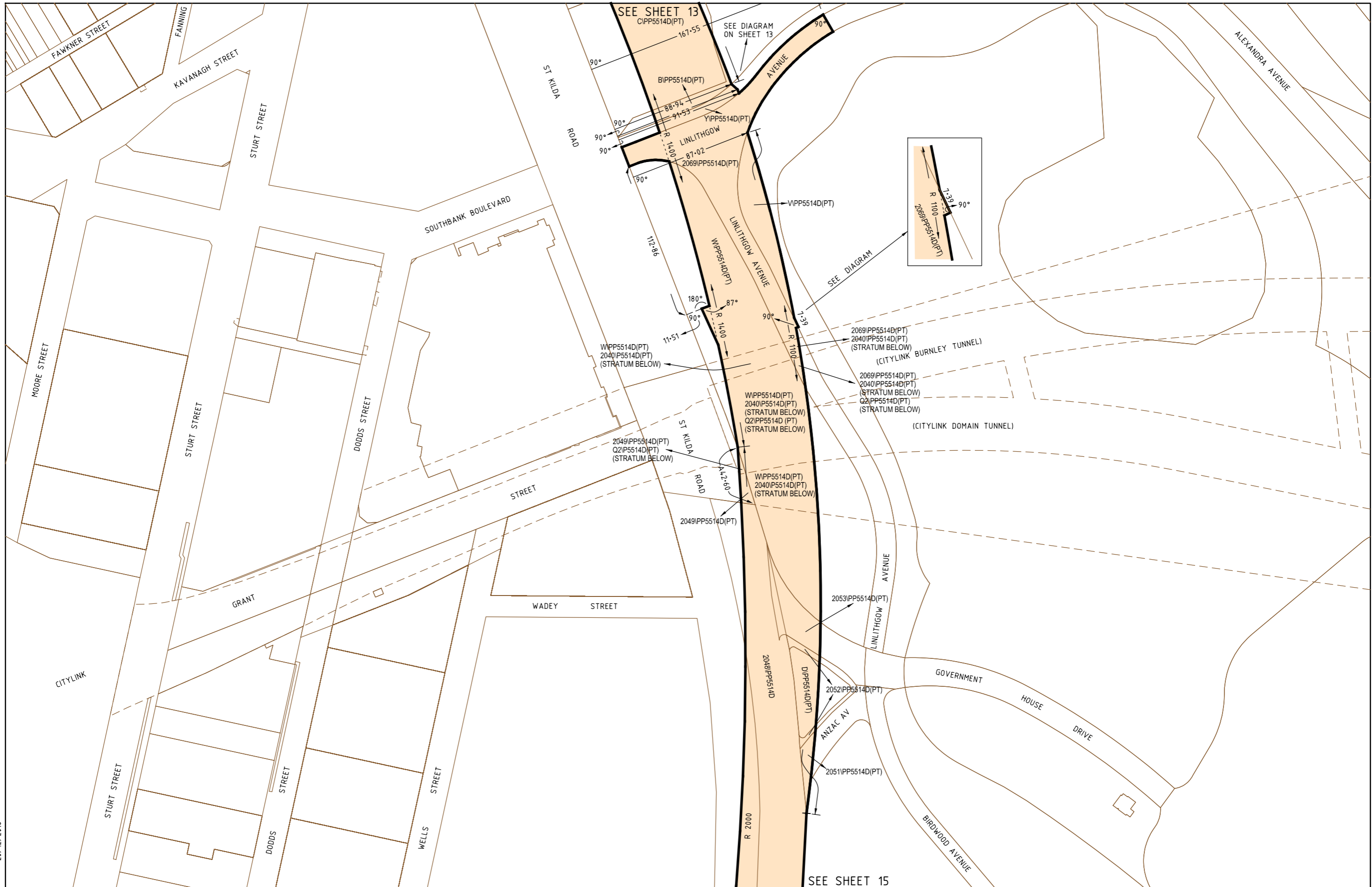
ORIGINAL SHEET SIZE A3 SCALE 1:2,500
SCALE OF METRES

## MELBOURNE METRO RAIL PROJECT

PROJECT AREA

SHEET 13 of 20 SHEETS

LEGL./16-236



20/12/2016

29234-lis--cb-01

LEGEND	
	BOUNDARY OF MELBOURNE METRO RAIL PROJECT AREA
	MELBOURNE METRO RAIL PROJECT AREA (UNLIMITED STRATUM)
	MELBOURNE METRO RAIL PROJECT AREA - STRATUM PARCEL (LIMITED STRATUM - SEE TABLE ON SHEET 19)



ORIGINAL SHEET SIZE A3
SCALE 1:2,500
SCALE OF METRES

# MELBOURNE METRO RAIL PROJECT

PROJECT AREA

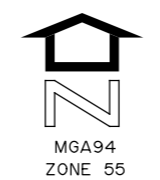
SHEET 14 of 20 SHEETS

LEGL./16-236



29234-lis--cb-01  
20/12/2016

LEGEND	
	BOUNDARY OF MELBOURNE METRO RAIL PROJECT AREA
	MELBOURNE METRO RAIL PROJECT AREA (UNLIMITED STRATUM)
	MELBOURNE METRO RAIL PROJECT AREA - STRATUM PARCEL (LIMITED STRATUM - SEE TABLE ON SHEET 19)

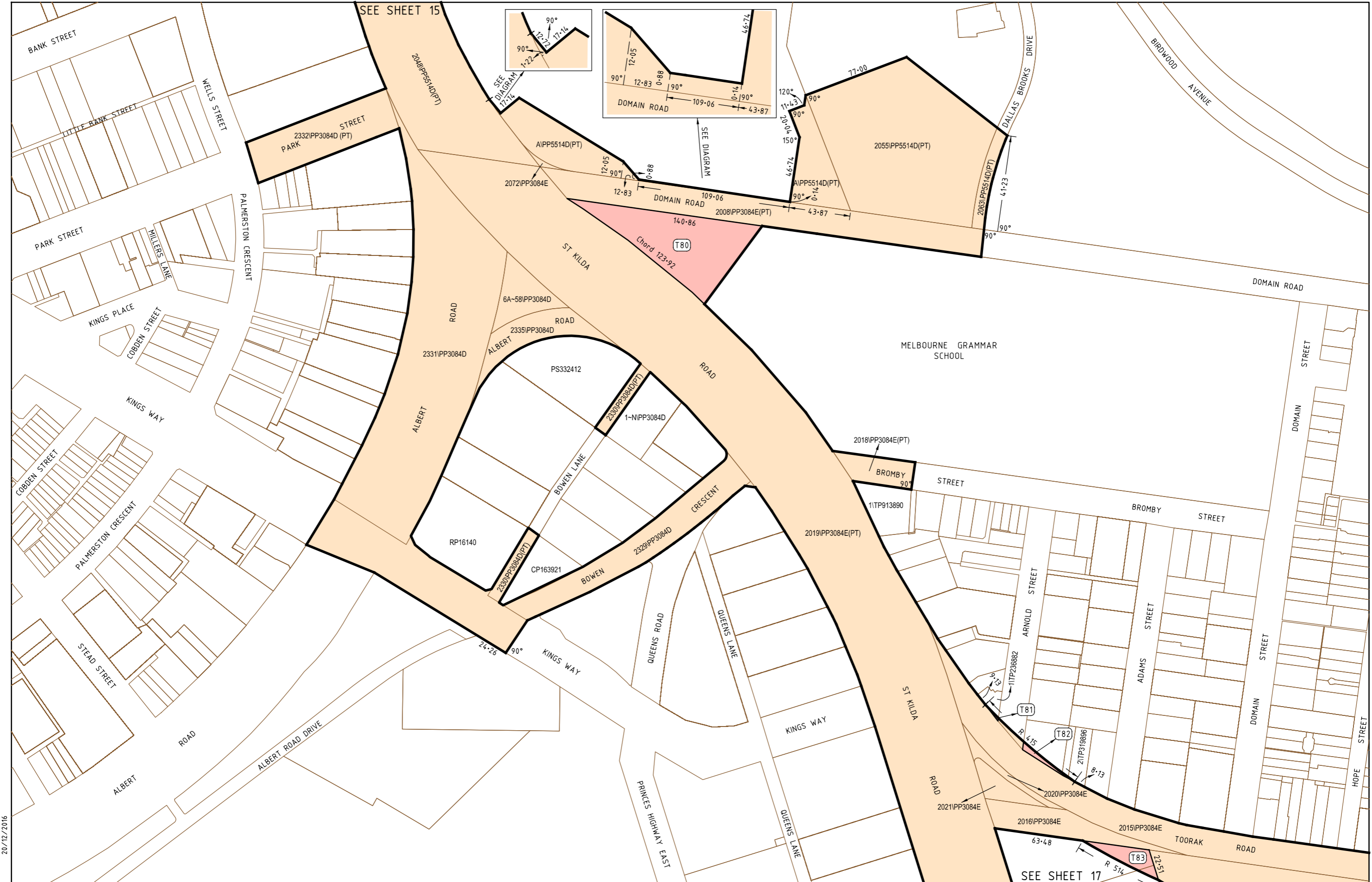


ORIGINAL SHEET SIZE A3  
SCALE 1:2,500

SCALE OF METRES

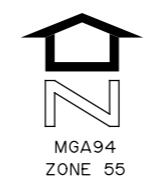
<b>MELBOURNE METRO RAIL PROJECT</b>	
<b>PROJECT AREA</b>	
SHEET 15 of 20 SHEETS	LEGL./16-236





20/12/2016  
29234-lis--cb-01

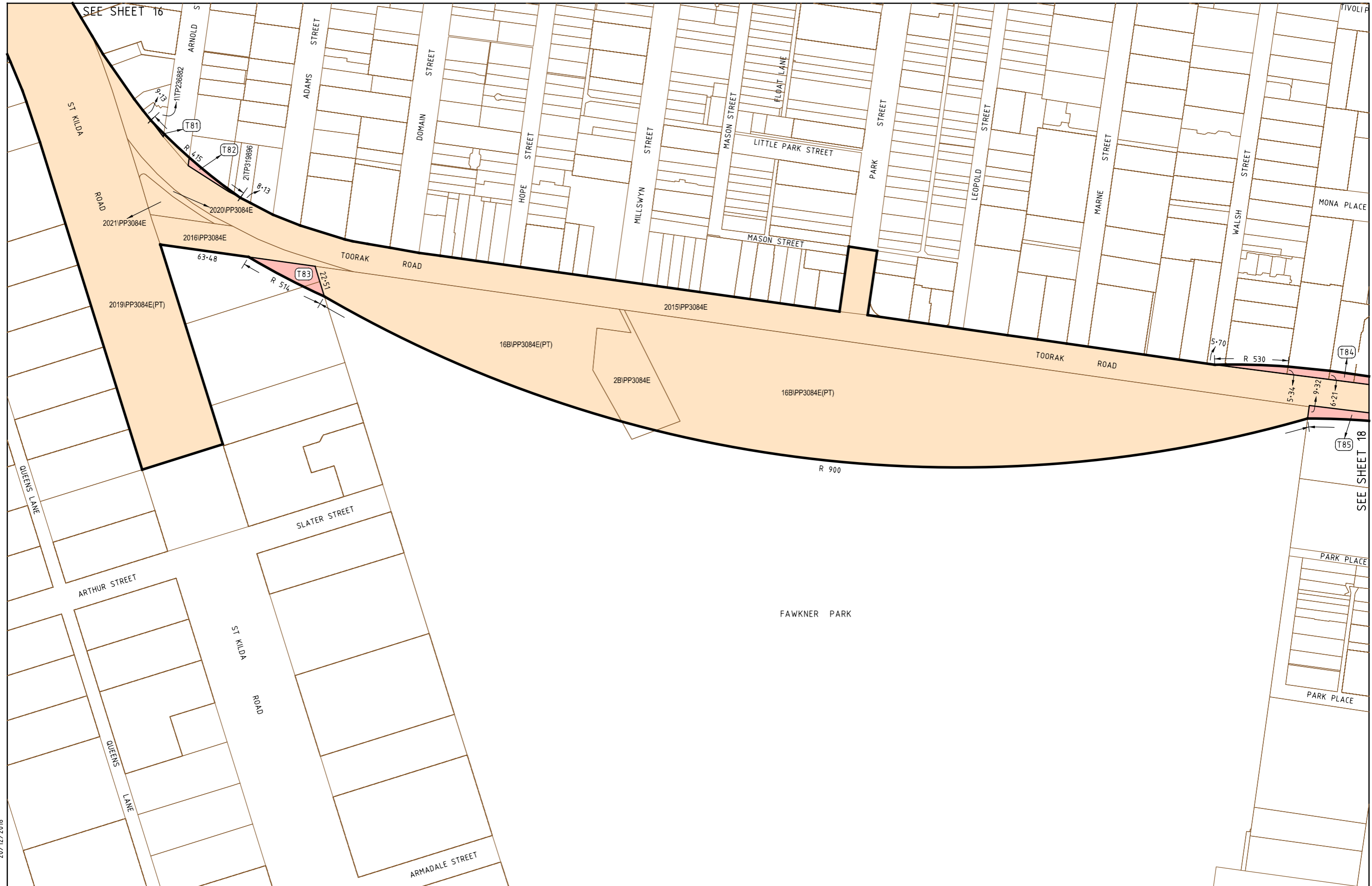
LEGEND	
	BOUNDARY OF MELBOURNE METRO RAIL PROJECT AREA
	MELBOURNE METRO RAIL PROJECT AREA (UNLIMITED STRATUM)
	MELBOURNE METRO RAIL PROJECT AREA - STRATUM PARCEL (LIMITED STRATUM - SEE TABLE ON SHEET 19)



ORIGINAL SHEET SIZE A3  
SCALE 1:2,500

0 25 50 75  
SCALE OF METRES

<b>MELBOURNE METRO RAIL PROJECT</b>	
<b>PROJECT AREA</b>	
SHEET 16 of 20 SHEETS	LEGL./16-236



20/12/2016  
29234-lis--cb-01

- LEGEND**
- BOUNDARY OF MELBOURNE METRO RAIL PROJECT AREA
  - MELBOURNE METRO RAIL PROJECT AREA (UNLIMITED STRATUM)
  - MELBOURNE METRO RAIL PROJECT AREA - STRATUM PARCEL (LIMITED STRATUM - SEE TABLE ON SHEET 19)



ORIGINAL SHEET SIZE A3  
SCALE 1:2,500

0 25 50 75  
SCALE OF METRES

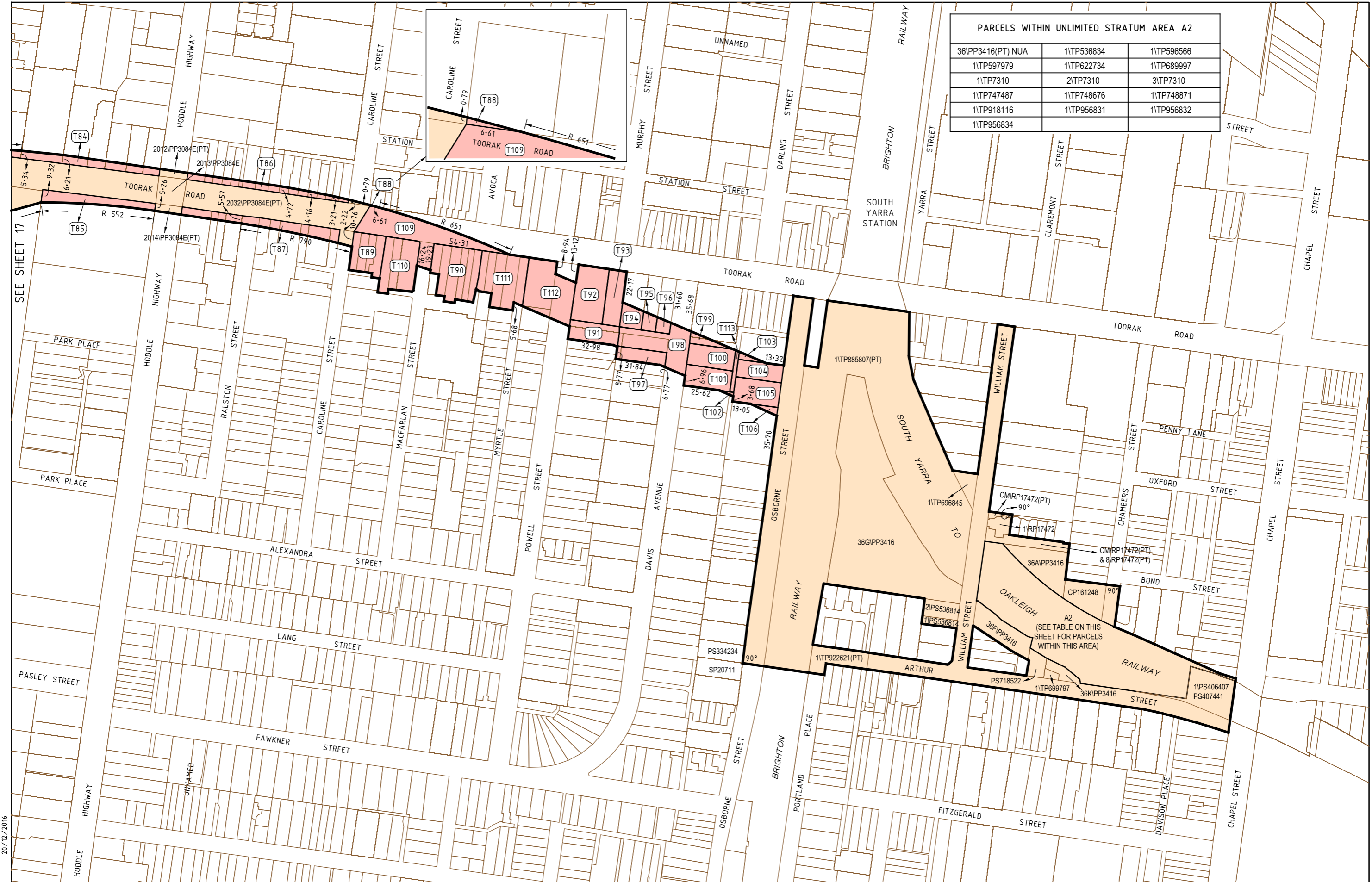
## MELBOURNE METRO RAIL PROJECT

PROJECT AREA

SHEET 17 of 20 SHEETS

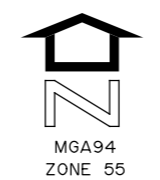
LEGL./16-236

PARCELS WITH UNLIMITED STRATUM AREA A2		
36PP3416(PT) NUA	11TP536834	11TP596566
11TP597979	11TP622734	11TP689997
11TP7310	21TP7310	31TP7310
11TP747487	11TP748676	11TP748871
11TP918116	11TP956831	11TP956832
11TP956834		



20/12/2016  
29234-lis--cb-01

LEGEND	
	BOUNDARY OF MELBOURNE METRO RAIL PROJECT AREA
	MELBOURNE METRO RAIL PROJECT AREA (UNLIMITED STRATUM)
	MELBOURNE METRO RAIL PROJECT AREA - STRATUM PARCEL (LIMITED STRATUM - SEE TABLE ON SHEET 19)



ORIGINAL SHEET SIZE A3  
SCALE 1:2,500

SCALE OF METRES

<b>MELBOURNE METRO RAIL PROJECT</b>	
<b>PROJECT AREA</b>	
SHEET 18 of 20 SHEETS	LEGL./16-236

STRATUM PARCEL IDENTIFIER	STRATUM LIMITATION LEVEL AND BELOW (AHD (metres))	INDICATIVE DEPTH BELOW GROUND SURFACE LEVEL (metres)
T1	-0.04	7
T2	-1.80	8
T3	-4.31	10
T4	-6.01	9
T5	-5.77	11
T6	-6.72	9
T7	-1.19	5
T8	-0.77	5
T9	-0.69	5
T10	-0.63	5
T11	0.16	7
T12	0.97	8
T13	1.20	9
T14	1.71	11
T15	2.48	11
T16	3.94	12
T17	3.07	13
T18	3.41	10
T19	3.76	9
T20	4.10	8
T21	4.45	8
T22	4.79	8
T23	5.62	7
T24	5.82	8
T25	6.33	6
T26	7.64	6
T27	7.87	7
T28	8.14	6
T29	8.42	7
T30	9.44	5
T31	9.79	6
T32	10.68	6
T33	10.76	8
T34	10.94	8
T35	11.27	7
T36	13.13	6
T37	13.43	9
T38	13.72	10
T39	13.88	10
T40	14.42	10
T41	14.77	11
T42	15.62	8
T43	21.40	6
T44	19.88	8
T45	21.38	14
T46	20.98	14
T47	20.41	14
T48	19.74	14
T49	19.29	14
T50	17.93	15
T51	17.31	16
T52	16.53	16
T53	14.35	21
T54	9.49	24
T55	6.80	26
T56	6.13	27
T57	5.45	27
T58	4.74	27
T59	5.10	23
T60	1.53	27

STRATUM PARCEL IDENTIFIER	STRATUM LIMITATION LEVEL AND BELOW (AHD (metres))	INDICATIVE DEPTH BELOW GROUND SURFACE LEVEL (metres)
T61	0.91	25
T62	0.41	25
T63	-0.78	25
T64	-1.70	23
T65	1.00	21
T66	19.50	0
T67	19.50	1
T68	3.47	1
T69	2.76	3
T70	2.58	3
T71	2.91	4
T72	2.03	5
T73	1.00	6
T74	-0.49	7
T75	7.00	1
T76	-6.80	6
T77	-4.54	7
T78	6.83	5
T79	6.66	5
T80	-1.50	9
T81	1.45	8
T82	0.64	9
T83	0.04	10
T84	2.25	19
T85	2.28	19
T86	2.89	14
T87	2.90	14
T88	2.98	13
T89	3.44	13
T90	4.09	10
T91	5.22	6
T92	4.72	6
T93	5.07	5
T94	5.53	5
T95	5.82	5
T96	6.14	4
T97	6.36	4
T98	6.85	3
T99	7.54	3
T100	7.75	3
T101	7.91	3
T102	7.91	4
T103	8.28	3
T104	8.83	2
T105	9.03	3
T106	9.09	4
T107	6.33	5
T108	13.13	8
T109	3.44	10
T110	3.18	12
T111	3.60	9
T112	4.09	7
T113	8.02	3
T114	19.50	1

20/12/2016

29234-1is--cb-01

ORIGINAL SHEET SIZE A3

MELBOURNE METRO RAIL PROJECT

PROJECT AREA

SHEET 19 of 20 SHEETS

LEGL./16-236

STRATUM PARCEL IDENTIFIER	AFFECTED LAND
T1	CM1PS537218
T2	CM1PS537218
T3	CM1PS537218
T4	CM1PS537218
T4	S6PS537218
T5	3PS718832
T6	1TP18018
T6	2064PP2541
T7	5PS409809
T8	7PS411093
T9	6PS411093
T10	5PS411106
T11	CP105819
T11	1LP29866
T11	2LP29866
T11	PC371329
T11	1TP847038
T11	2025PP2796F
T12	PC350653
T12	1PS407019
T12	2PS407019
T12	1TP711287
T12	1TP749048
T12	1TP831511
T12	1TP832852
T12	1TP832903
T12	1TP874323
T12	1TP950718
T12	2061PP2796F
T12	2029PP2796F
T13	1PS413777
T13	2PS413777
T13	3PS413777
T13	4PS413777
T13	1TP707887
T13	1TP747482
T13	2061PP2796F
T14	1PS402350
T14	1TP242835
T14	1TP83299
T14	2032PP2796F
T14	2060PP2796F
T14	NUA
T15	1TP368532
T15	1TP377726
T15	1TP574244
T15	2TP574244
T15	1TP947658
T15	NUA
T15	2035PP2796F
T16	CP168056
T16	CM1PS527934
T17	CMPS303633
T18	27LP52554
T19	CMPS304012
T20	CMRP16386
T21	CMSP23066
T22	CM1PS641143
T23	2SP24331
T23	3SP24331

STRATUM PARCEL IDENTIFIER	AFFECTED LAND
T23	4SP24331
T23	5SP24331
T23	6SP24331
T23	CM1SP24331
T23	1TP404136
T23	1TP605013
T23	1TP696325
T23	1TP808557
T23	2TP808557
T24	1LP145589
T24	2LP145590
T24	1PS532236
T24	2PS532236
T25	Govt. Road
T26	CMSP25349
T26	2002PP2796F
T26	2046PP2796F
T26	2052PP2796F
T27	1LP31077
T27	2LP31077
T27	1TP376236
T27	1TP390831
T28	1TP240740
T28	1TP396699
T28	1TP402670
T28	1TP404974
T29	SP26799 (CP)
T29	1TP235628
T29	1TP395821
T29	2TP395821
T29	7-78C/PP2796F
T30	3TP841417
T30	2053PP2796F
T30	NUA
T31	CMPS325670
T32	CMPS325670
T32	CM1PS449911
T33	CM1PS517650
T34	CM1PS517650
T35	CM1PS517650
T36	1TP952168
T36	2054PP2796F
T37	CMPS303651
T37	R1PS303651
T37	NUA
T38	NUA
T38	1TP110393
T38	1TP608488
T38	1TP945326
T39	1PS632501
T39	2PS632501
T39	3PS632501
T39	1TP390049
T39	2TP390049
T39	1TP608488
T39	1TP822942
T39	NUA
T40	CM1PS628096
T41	1TP251651
T41	NUA

STRATUM PARCEL IDENTIFIER	AFFECTED LAND
T42	NUA
T42	CM3PS515095
T42	CM1PS532717
T43	2007PP2796G
T43	2002PP2796G
T44	3-13A/PP2796G
T45	1LP42235
T45	NUA
T46	NUA
T46	1TP672213
T47	NUA
T48	RP18792 (CP)
T49	CP154686
T49	1TP119223
T50	SP36243 (CP)
T50	1TP334519
T50	1TP387801
T50	1TP389759
T50	1TP515320
T50	1TP680539
T50	2TP922651
T51	CP105573
T51	1LP34144
T51	2LP34144
T51	1TP101128
T51	1TP125358
T51	2TP125358
T51	1TP230007
T51	2TP230007
T51	1TP235771
T51	2TP235771
T51	1TP299774
T51	1TP596982
T51	2TP596982
T51	1TP599829
T51	1TP616255
T51	2TP616255
T51	1TP680467
T51	2TP680467
T51	1TP697378
T51	1TP699993
T51	1TP873743
T51	1TP922651
T51	1TP942629
T51	NUA
T51	1TP950547
T51	3A-31/PP2796B
T52	CP163587
T52	CP168531
T52	SP26281 (CP)
T52	1TP160727
T52	2TP160727
T52	2026PP2796B
T53	CM1PS448737
T53	S3PS448737
T53	NUA
T53	Govt. Road
T53	2TP217114
T53	2020PP2796B
T53	2022PP2796B

STRATUM PARCEL IDENTIFIER	AFFECTED LAND
T54	CMPS408909
T54	CM1PS608032
T54	CM1PS702878
T54	1TP231252
T54	1TP763446
T54	2TP763446
T54	1TP763594
T54	2TP763594
T54	1TP888365
T54	NUA
T54	12A-23/PP2796B
T55	1TP201342
T55	1TP858116
T56	1LP25513
T56	2LP25513
T56	15A/SP31837
T56	1TP77824
T56	1TP813437
T56	1TP953490
T57	CP164187
T58	CM1PS431413
T59	CM1PS447385
T59	2025PP2796B
T59	2024/PP2796B
T59	2027/PP2796B
T59	2023/PP2796B
T59	2022/PP2796B
T60	1TP837560
T61	S3PS643901
T62	S2PS643901
T63	PS643901
T64	PC355129
T65	1-44A/PP5514C
T66	CP107702
T67	1TP556440
T68	1TP707976
T68	2TP707976
T69	1TP534015
T69	1TP753275
T69	2TP753275
T70	1TP603859
T71	1PS708665
T71	2PS708665
T72	3PS708665
T72	4PS708665
T73	1PS537218
T73	3PS537218
T73	5PS537218
T73	6PS537218
T73	CM1PS537218
T74	76PS537218
T74	CM1PS537218
T75	1TP876953
T76	1TP18290
T76	2TP18290
T76	6-19E/PP5514C
T76	2140/PP5514C
T76	2038/PP5514C
T76	2049/PP5514C
T77	2060/PP5514D

STRATUM PARCEL IDENTIFIER	AFFECTED LAND
T77	2061PP5514D
T78	CP153114
T79	CMPS402824
T79	1-59PP3084D
T79	4-59PP3084D
T79	1B-59/PP3084D
T79	1A-59/PP3084D
T79	3-59PP3084D
T80	1TP834086
T81	1TP236882
T82	1TP319896
T82	2TP319896
T82	2TP587121
T83	CP101001
T83	CP168775
T84	22LP60143
T84	R1LP61760
T84	CM1PS600729
T84	CMRP12358
T84	CMRP17737
T84	CMSP20849
T84	CMSP22512
T84	1TP170164
T85	1LP82470
T85	R1LP82470
T86	1LP53034
T86	2LP53034
T86	3LP53034
T86	4LP53034
T86	5LP53034
T86	1PS503692
T86	2PS503692
T86	1TP189615
T86	1TP379360
T86	1TP412868
T86	1TP689042
T86	1TP698957
T86	1TP745329
T86	1TP843992
T86	1TP85291
T86	1TP886390
T86	NUA
T87	CP162442
T87	1LP70922
T87	PC364930
T87	PC366901
T87	2PS418462
T87	1PS535035
T87	2PS535035
T87	CMSP24019
T87	1TP683718
T87	1TP692645
T87	1TP692767
T87	NUA
T88	1LP42580
T89	1LP57009
T89	2LP57009
T89	1TP372711
T89	1TP545244
T90	1LP35266

STRATUM PARCEL IDENTIFIER	AFFECTED LAND
T90	2LP35266
T90	1LP171730
T90	1PS646549
T90	2PS646549
T90	CM1PS646549
T90	1TP188649
T90	1TP706323
T91	CMRP11251
T91	CMSP31311
T91	1TP330443
T91	NUA
T92	CMSP31311
T93	1TP706762
T94	CM1PS605305
T95	1TP159542
T96	1TP376223
T97	1PS335315
T97	CMRP11251
T98	CMRP11251
T98	1TP373246
T98	1TP679034
T98	NUA
T99	PS646743
T99	NUA
T100	1TP679034
T101	1TP373246
T102	1TP531862
T102	NUA
T103	1TP834044
T104	37B/PP3416
T105	CMPS315015
T106	1TP858380
T107	1LP211604
T107	2LP211604
T107	1PS330562
T107	2PS330562
T107	1PS413740
T107	CMPS416839
T108	1PS716280
T108	1TP333632
T108	2TP333632
T108	1TP550176
T108	NUA
T109	2032/PP3416
T109	NUA
T110	CMSP35680
T110	1TP344635
T110	1TP535770
T111	1PS307748
T111	1TP365950
T111	1TP399406
T111	1TP436332
T111	NUA
T112	PC359653
T112	1TP694037
T112	2TP694037
T112	NUA
T113	NUA
T114	CMSP34971