



Arden and Parkville Community Reference Group

Meeting 23

Friday 8 April 2022



Agenda

Friday 8 April 2022



Item	Topic	Presenter
1	Introductions and welcome <ul style="list-style-type: none">Outstanding Actions and Issues RegisterZoom meeting housekeeping	Chris Lovell
2	Project-wide construction update	CYP
3	Parkville construction update	CYP
4	Arden construction update	CYP
5	Creative program update	CYP
6	Arden Station & Tunnel Tour	CYP
7	Stakeholder and communications update	CYP
8	General feedback and items for future discussion	All
9	Meeting close <ul style="list-style-type: none">Next meeting: Friday 10 June 2022	Chris Lovell

Construction update: Project wide

- Build out works have commenced at Little La Trobe
- Works will commence from the bottom of the shaft up at Little La Trobe
- Strut removal continuing at Franklin Street site
- Station cavern lining works are ongoing



Central ceiling arch

Town Hall Station



- Station cavern lining works are ongoing
- TBM shield lining works are underway to connect to shield edge to the station cavern entrance
- Basement 4&5 excavation at Flinders Quarter is ongoing
- Works will commence in May within Campbell Arcade to complete the connection with Flinders Street Station
- Surface works are continuing to prepare for the first tower crane at City Square.



Passenger adit in the station cavern

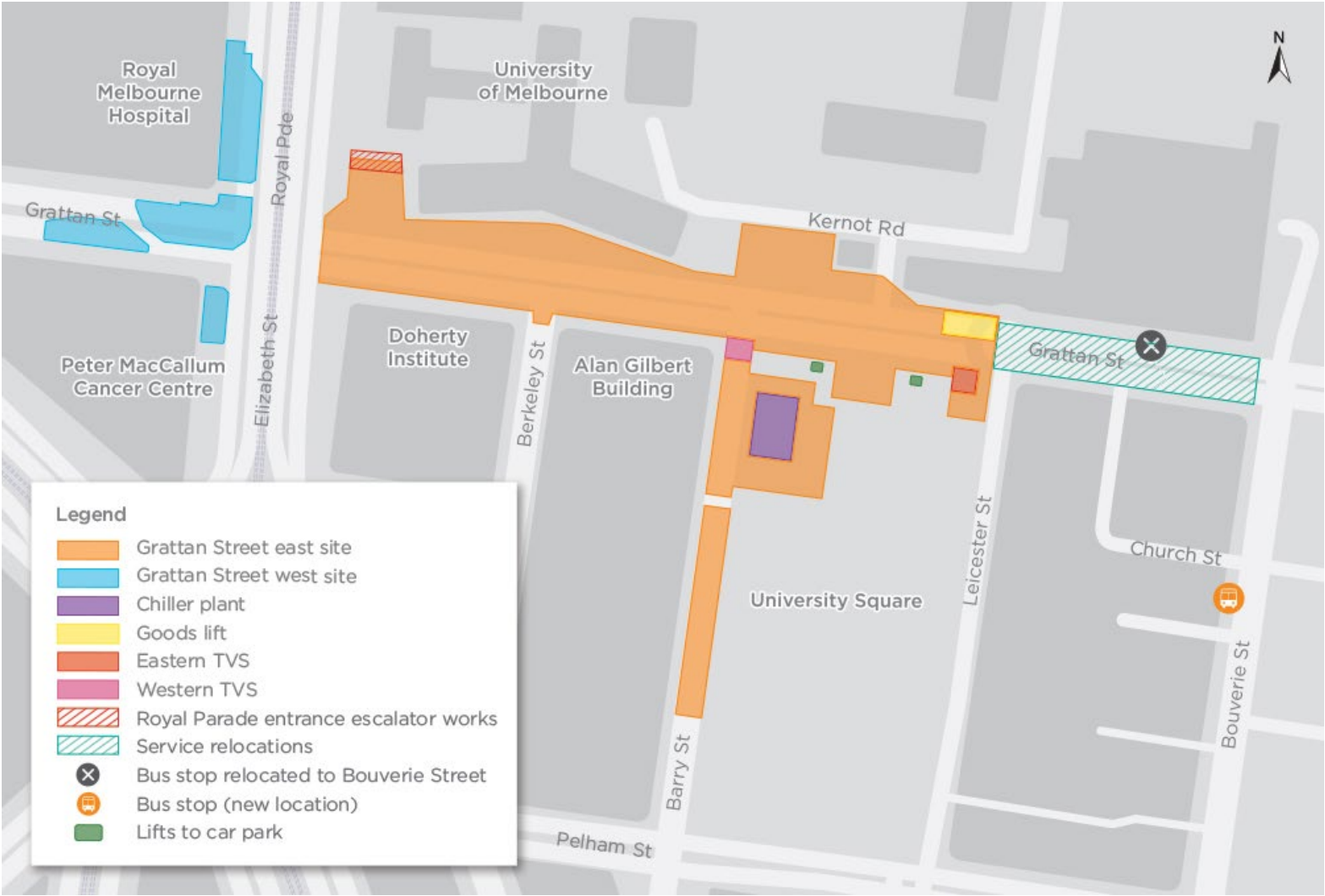
- Steel canopy legs have been installed at the site to support the timber canopy for the tram/train interchange station entrance
- On platform level, platform, over track exhaust, and platform screen doors steel structure installation is ongoing.



Canopy leg installation

Construction update: Parkville

Parkville Precinct

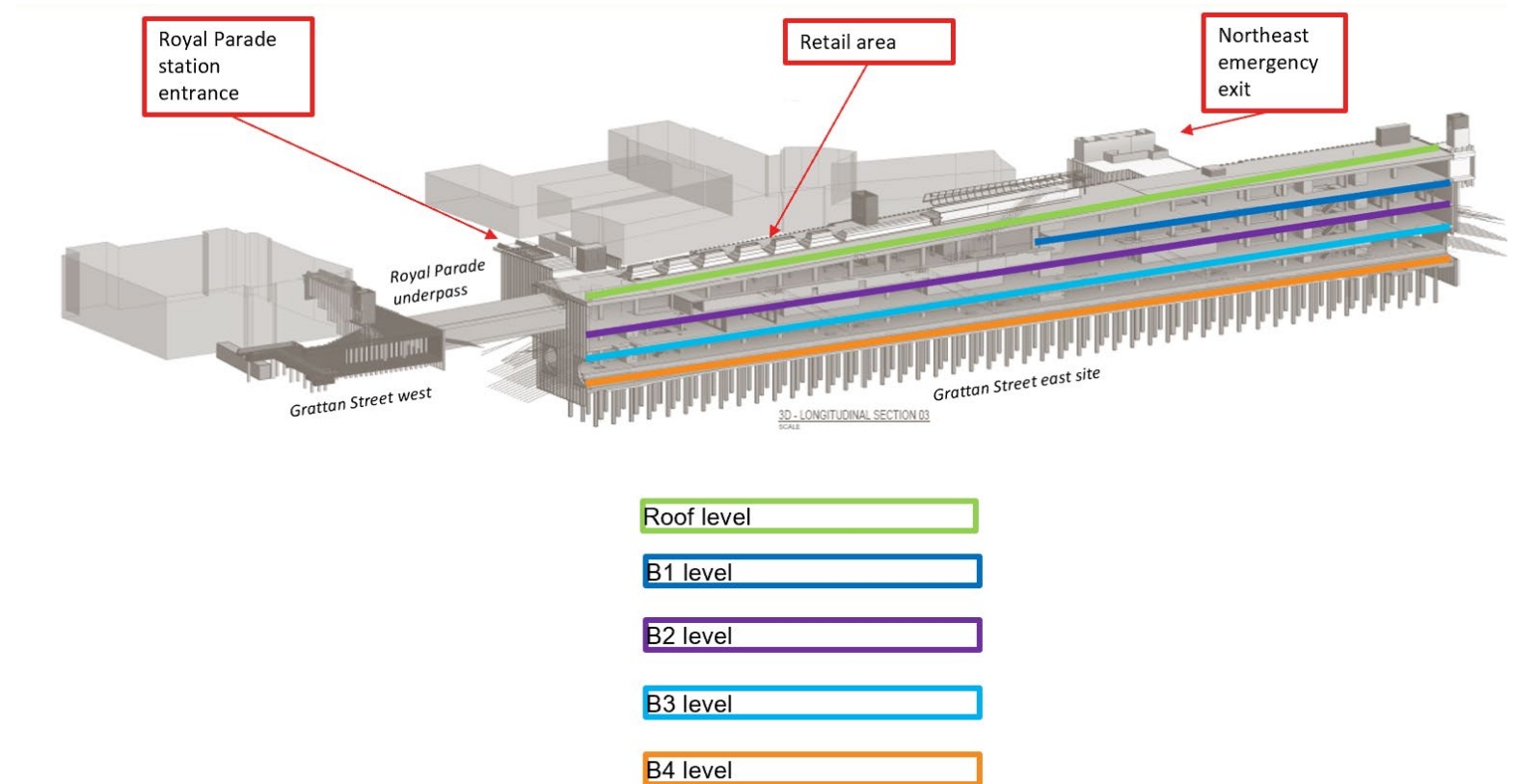


Station construction and fit out works

Grattan Street east



- Capping beam and pile removal works are ongoing
- Permanent structure activities are ongoing
- Fit out works are ongoing and involve the installation of blockwork walls and mechanical, electrical and plumbing systems
- Escalator and lift installation has commenced.



Concourse (looking east)

Grattan Street east



Presenter: Jacob Ramaekers

Concourse (looking west)

Grattan Street east



Presenter: Jacob Ramaekers

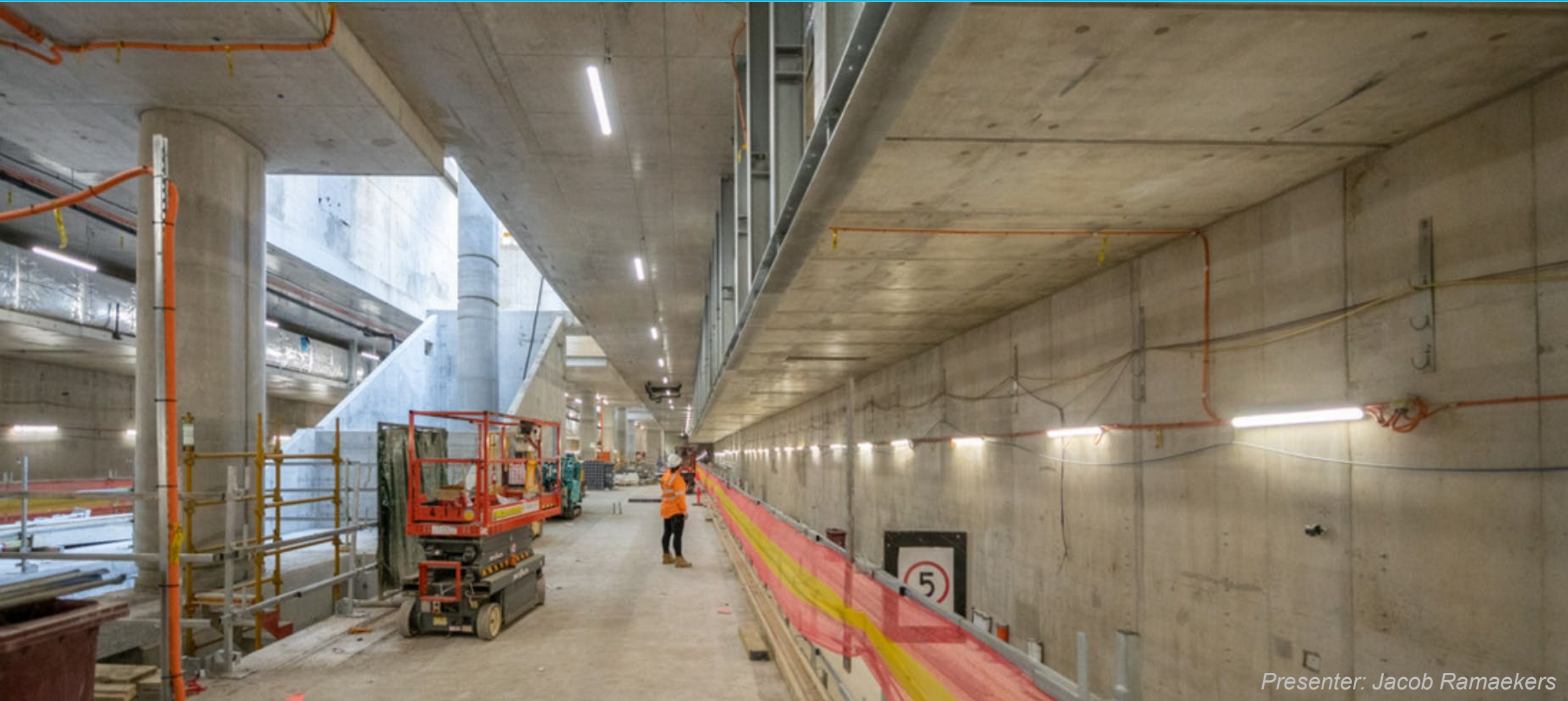
Escalator installation between concourse and platform

Grattan Street east



Platform

Grattan Street east



Presenter: Jacob Ramaekers

MEP fit out

Grattan Street east



Presenter: Jacob Ramaekers

MEP fit out

Grattan Street east



Presenter: Jacob Ramaekers

Northeast emergency exit

Grattan Street east



- Final internal wall pours is underway
- Stair installation is underway
- Following internal wall construction and stair installation, roof slab works will commence.



Northeast emergency exit

Presenter: Jacob Ramaekers

Retail area

Grattan Street east



- Final finger joint (roof slab) completed
- Capping beam removal has commenced
- Staged pile removal has recommenced, following completion of the finger joints.



Royal Parade entrance

Grattan Street east



- Roof slab construction ongoing
- Struts will be progressively removed to pour the roof slab
- Escalator footing construction works will commence from May. Works will include excavation, structural steel installation, and escalator installation
- Legacy utilities and landscaping works will follow.



Royal Parade entrance

Presenter: Jacob Ramaekers

Chiller plant and western tunnel ventilation shaft

Grattan Street east



Chiller plant

- Strengthening works are complete
- Installation of the membrane at surface level is complete
- Permanent structure works have commenced.

Western TVS

- Waterproofing and lining wall works are ongoing.

Eastern TVS

- Strengthening works continue in the car park
- Waterproofing and lining wall works are ongoing within the Grattan Street east site.



Chiller plant surface works

Gantry crane removal

Grattan Street east



- Gantry crane removal is ongoing until June
- Gantry crane 2, the middle crane, has been removed
- Gantry crane 3, the eastern end crane, removal works have commenced
- For each crane this involves:
 - Disconnecting motors and electrics
 - Attaching temporary braces to the gantry crane legs
 - Using a large mobile crane to lower pieces of the crane to ground level
 - Removing gantry crane legs and temporary braces (mobile crane)
 - Additional dismantling at ground level
 - Removal from site (some over-sized loads required at night).



Gantry crane 2 removal

Royal Parade underpass

Grattan Street east



- Excavation, temporary lining construction and pile removal is now complete
- Waterproofing membrane installation is ongoing
- Once complete, base slab works will commence as part of the permanent lining works.



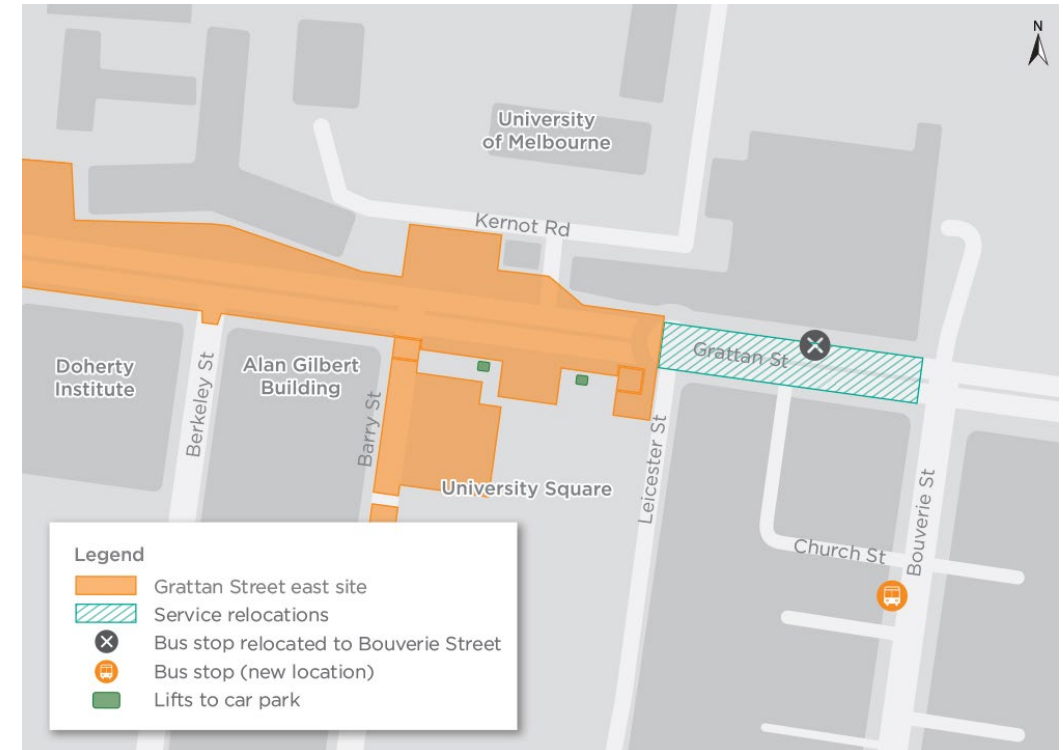
Royal Parade underpass

Service relocations

Grattan Street between Leicester and Bouverie streets



- From May, service relocations are required on Grattan Street between Leicester and Bouverie street
- Prior to works, the Melbourne University/Grattan Street bus stop will be relocated to Bouverie Street (refer to map)
- Traffic and pedestrian diversions will be required
- Further information will be provided.



Indicative only and subject to change

Six month program

Grattan Street east



Activity	Apr	May	Jun	Jul	Aug	Sept
Station box permanent structure works						
Station box fit out						
Royal Parade entrance						
Retail area						
Northeast emergency exit						
Staged pile removal (intermittent)						
East TVS						
West TVS						
Chiller plant						
Goods lift						
Royal Parade underpass						
Gantry crane removal						
Staged capping beam removal						
Service relocations						

Indicative only and subject to change

Presenter: Jacob Ramaekers

Grattan Street west

Station entrance construction



- Lining wall construction is ongoing
- Removal of temporary king posts is anticipated to commence from mid-April
- Following permanent structure works, fit-out works will commence within the west box and involves mechanical, electrical and plumbing installation and secondary wall construction



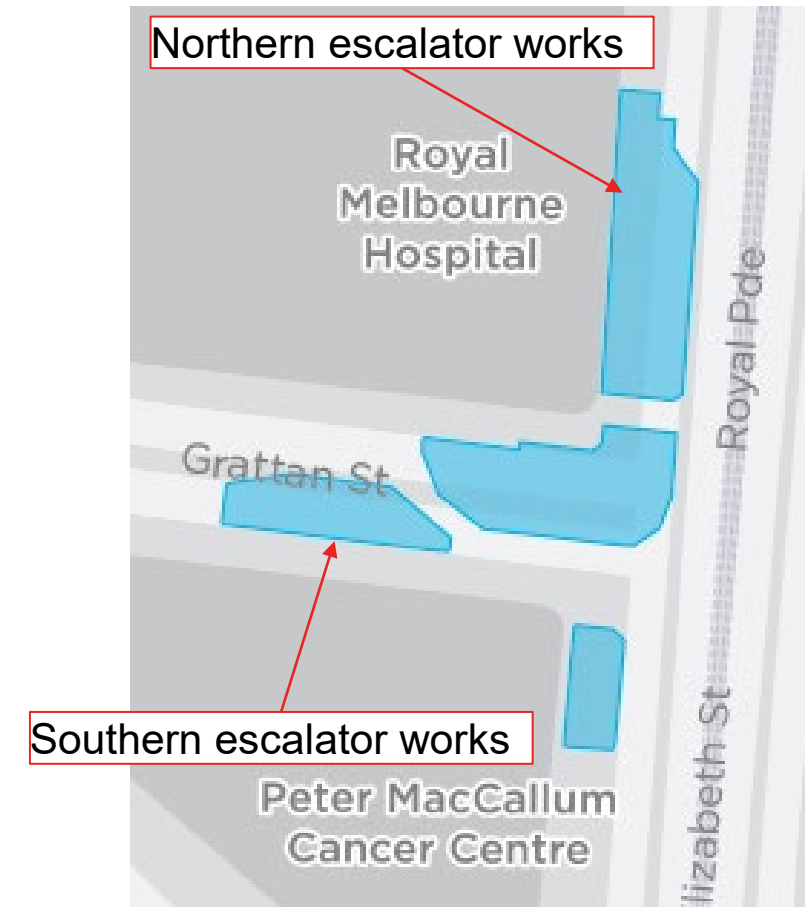
Grattan Street west station entrance

Grattan Street west

Surface works



- Future works at surface level will include pile top removal, structure works and backfilling activities
- Southern escalator footing excavation will commence from mid-April
- Pile top removal works will commence from late May
 - To facilitate works along the north-west site boundary, adjacent to The Royal Melbourne Hospital, the Grattan St/Royal Parade footpath will need to be closed
 - Pedestrians will be diverted through the site, similar to the diversion implemented for Stage 2 piling works
- Following pile top removal works, northern escalator footing excavation will commence.



Six month program

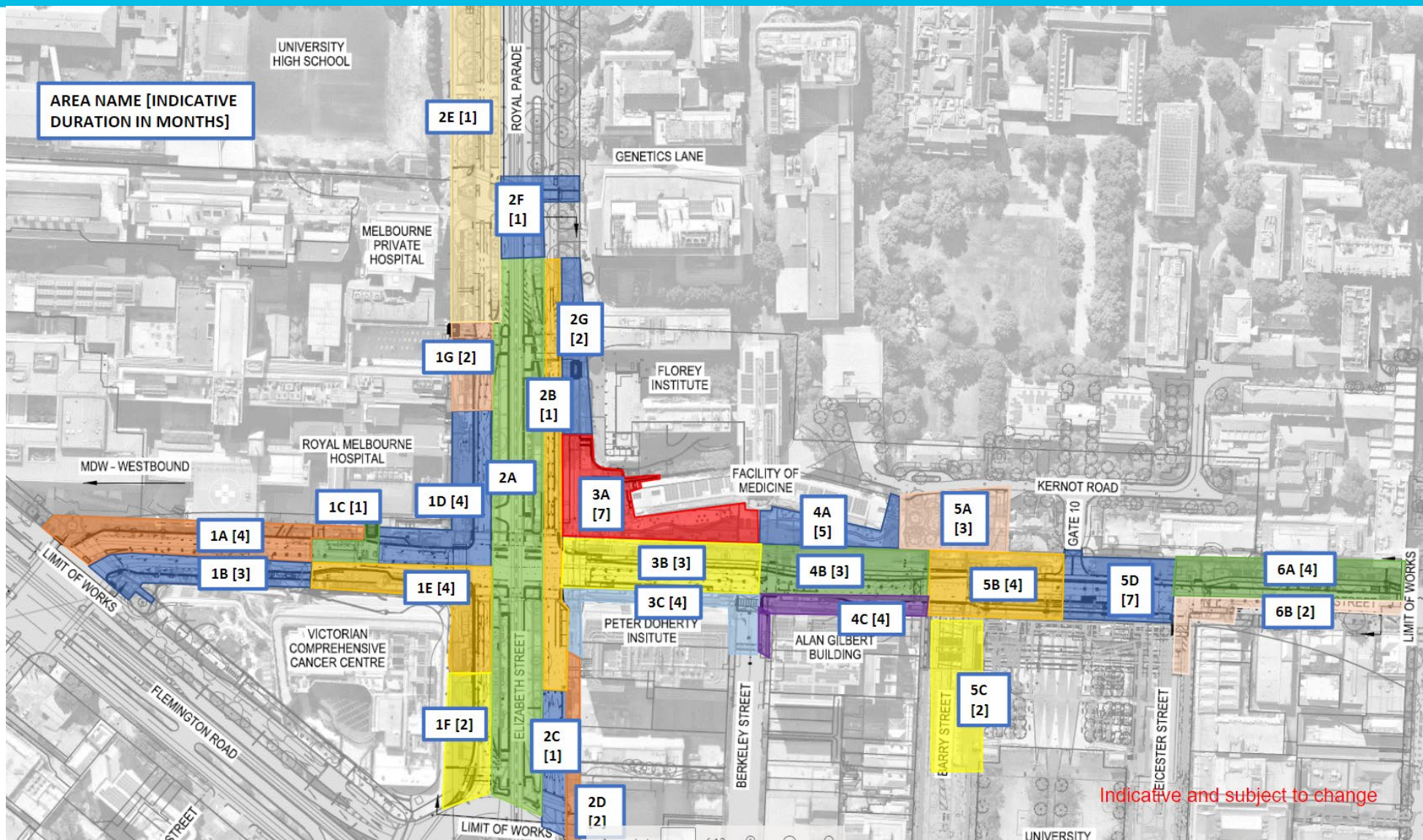
Grattan Street west



Activity	Apr	May	Jun	Jul	Aug	Sept
Permanent structure works						
Escalator works						
King post removal						
Service installation and fit out works						
Pile top removal						
Backfill						

Indicative only and subject to change

Reinstatement and public realm works



- From mid-2022, staged reinstatement and public realm works will commence
- Works are expected to be ongoing for around two years
- In preparation for the works, preliminary activities will be undertaken which involve the relocation of utilities, backfill and capping beam and pile top removal
- Reinstatement and public realm works will involve footpath and road construction, traffic signal modifications, installation of surface structures and street furniture and landscaping
- From late 2023, works will commence to construct a new tram super stop on Royal Parade/Elizabeth Street
- There will be changes to the way you move around the precinct during these works
- More information, including pedestrian and traffic arrangements, will be communicated in advance.

Construction update: North Melbourne

Station entrance construction



- The entrance level concrete slab has been poured
- Work to construct the station entrance building is ongoing, with structural steel now complete
- Once the structural steel is completed, precast panels will begin to be installed
- Panel installation will begin before Easter.



Arden Station entrance arches

- Steel platform screen door frame installation continuing
- Precast for two of the three station skylights is now complete. Temporary covers will be installed on the skylights so crews can continue with fitout works below
- Mechanical, electrical and plumbing back of house fit out is continuing.



Platform construction progress – prior to completion

- Rail tunnel fitout is continuing along the entire length of the Metro Tunnel
- This work includes cable bracket installation, pipe works, steel walkway installation and cable pulling
- Towards the end of April the first of the trackform slab precast will begin to be delivered to site



Track form precast at Deer Park

- Track form concrete panels will be installed in segments along the alignment of the Metro Tunnel
- The rail track will then be installed on these panels
- These precast panels are being produced at the Project's production facility in Deer Park
- In total, 4,000 concrete panels will be installed along the floor of the tunnels.



Track form precast – close up

- Work on the North Melbourne electrical substation is now focusing on energising the western building at Arden
- Testing and commissioning will commence in April
- The North Melbourne electrical substation will ultimately provide power for the entire length of the Metro Tunnel, to all stations and trains (traction power).



Inside the North Melbourne electrical substation

Utility works – Arden Station



- Watermain works on Queensberry Street will be completed today, with the road to reopen to through traffic
- Coming up before Easter, the water main valve connection on Arden Street will be upgraded. This will require partial lane closures westbound on Arden Street.
- Additional to these works, there will be gas, electrical and telecommunications utility works in the area during 2022.



Six month program

North Melbourne



Activity	Apr	May	Jun	Jul	Aug	Sep
Utility investigation works						
Utility installation works						
Station entrance construction						
Mechanical, electrical and plumbing installation						
North Melbourne electrical substation construction and landscaping						

Creative program update

True North stakeholder event



True North stakeholder event



Rohan Leppert @RohanLeppert · Mar 16

A pleasure to be at the @metrotunnelvic Arden Station site today celebrating the launch of “True North”, an illustrative timeline of the history of the land. Thanks to the local Hotham History Group and NW Melb Assn for digging out the archives and putting it together!



2 1 17



Metro Tunnel

2 d

Have you been to 'True North' yet?

The latest art installation at Arden Station brings to life the story of how North Melbourne has evolved over time.

A special thank you to the North and West Melbourne Association, the Hotham History Project, Chr... See more



29

2 shares
Presenter: Mary Parker

SURGE

**SURGE CAPACITY IS THE ABILITY
TO PUSH THROUGH HARDSHIP,
AND EXCEED A NORMAL LEVEL OF
OPERATING FUNCTION, WHETHER THAT
BE PHYSICAL OR PSYCHOLOGICAL.**

Patrick Tan

Presenter: Mary Parker



We had the first positive COVID-19 case in Australia on January 24, 2020. It was late on a Friday and I put the virus up for culture. Over the weekend we could see that it was growing and by Tuesday we confirmed that we had successfully grown the virus – making us the first lab outside China to do so. We then shared the virus within Australia and also internationally. The race was on to get diagnostics, positive control materials for testing distributed and vaccine development underway.

Part of our job includes pandemic preparedness and we had planned for this very event with a range of tests we designed over 10 years ago. These tests were able to detect a novel virus within a virus family. It was a pan-coronavirus test, able to pick up any coronavirus, and identify it. I feel proud that we were able to achieve that and the work paid off. Nevertheless, everything unfolds a little differently to the way you expect it to.

It's not a robot that does everything for us. We are the robots – we do all the work ourselves. That adds complexity, but also a level of satisfaction. We're the designers and the keepers of the test, and we change it, adapt it and manage it.

Our team has done the most stellar job. The work is relentless – we haven't had a break in 18 months, with 10-12 hour days, everyday. In the first few months we clicked over 100,000 tests. Our team is doing the most unimaginable amount of work with continued enthusiasm, no complaints and just getting on with it. It's phenomenal and heartwarming to see.

Presenter: Mary Parker

PHOTO 2022 BARRY ST

100 YEARS BY JENNY LEWIS



The greatest thing about me? I've been a professional flamenco dancer most of my life.'

Ron, age 93

*Photo: One Hundred Years, Jenny Lewis
Image courtesy of the artist*

Presenter: Mary Parker

13 Jan 2022

Help celebrate Victoria's diverse community – 101 Victorians

SHARE



We're celebrating the extraordinary diversity of Victoria's community with a photographic series of people at every age from 0 to 100 – we'd love your help, by contributing a photograph of someone you know.

As part of **PHOTO 2022**, the **Metro Tunnel Creative Program** will exhibit **One Hundred Years** by British artist Jenny Lewis. Jenny's thoughtful images capture her local community in Hackney, East London. With an image and a short quote from each of her subjects, Jenny brings to life the joys, adversities, challenges and beauty of her community as they reflect on their lives so far.

With the permission of Jenny Lewis and PHOTO 2022, the Metro Tunnel Creative Program is seeking to create a Victorian version of the evocative One Hundred Years project, to be shown as an online gallery, at the same time as Jenny's work is exhibited for PHOTO 2022. We're asking Victorians to submit a photo of someone in their community to be part of this project. All Victorian residents are welcome to participate.

Presenter: Mary Parker

Arden Station & Tunnel Tour

- More than 1,000 stakeholders and community members attended the Arden Station and Tunnel Tour on Sunday 27 March.
- The first event of its type since the project's inaugural Community Day in August 2019, the day provided visitors with a 50-minute guided walking tour of the completed tunnel and new Arden Station.
- Highlights of the tour included a partial walk through, and commemorative photo taken in the completed tunnel and an up-close look at the station's newest addition – the entrance's signature brick arches.

TBM installation



Presenter: Kim Norton

Tunnel walk



Presenter: Kim Norton

Concourse level



Presenter: Kim Norton

Station entrance



Presenter: Kim Norton

Communications and stakeholder engagement update

Communications and engagement update

North Melbourne and Parkville



Notification and communications

- North Melbourne: April/May construction update (1 April)
- North Melbourne: Queensberry Street closure extension (28 March)
- Parkville: April/May construction update (6 April)
- Parkville: weekly update to key stakeholders (ongoing).

Door knocks, meetings, briefings and events

- North Melbourne: fortnightly meetings with City of Melbourne
- North Melbourne: monthly meeting with Mauri
- Parkville: fortnightly meetings with Peter MacCallum Cancer Centre, Melbourne Health, University of Melbourne, City of Melbourne and monthly meeting with Graduate House.

Communications and engagement update

North Melbourne and Parkville



Community issues/enquiries and key stakeholder engagement

- Parkville: Royal Parade entrance boundary adjustment for escalator works

Upcoming engagement

- Parkville: Legacy work activities
- Parkville: Service relocation works (Grattan Street between Bouverie and Leicester streets)
- North Melbourne: 2022 activities

Media

Royal Parade underpass – April 2022



Presenter: Kim Norton

General feedback and items for future discussion

Other business

- The Metro Tunnel Project will take a break from construction from **Friday 15 April 2022** and will resume from **Tuesday 26 April 2022**.
- Next meeting: Friday 10 June 2022